



Taraba State Health Profile

Nature's Gift to the Nation





Your Excellency,

This profile gives a snapshot of the key health indices in your state as well as some of the key actions your excellency needs to prioritize to build a stronger and resilient health system for better health outcomes.

Signed

DG NGF

Get to Know Taraba State



Taraba state ranked 33rd in terms of population size and has a population density of 67 persons/km².



Created

27/08/1991



Land Mass

54,473km²



Population

3,635,070



LGAs

16



Political Wards

168



Under 1 Population

145,403



Under 5 Population

727,014



Women of Child Bearing Age

799,715



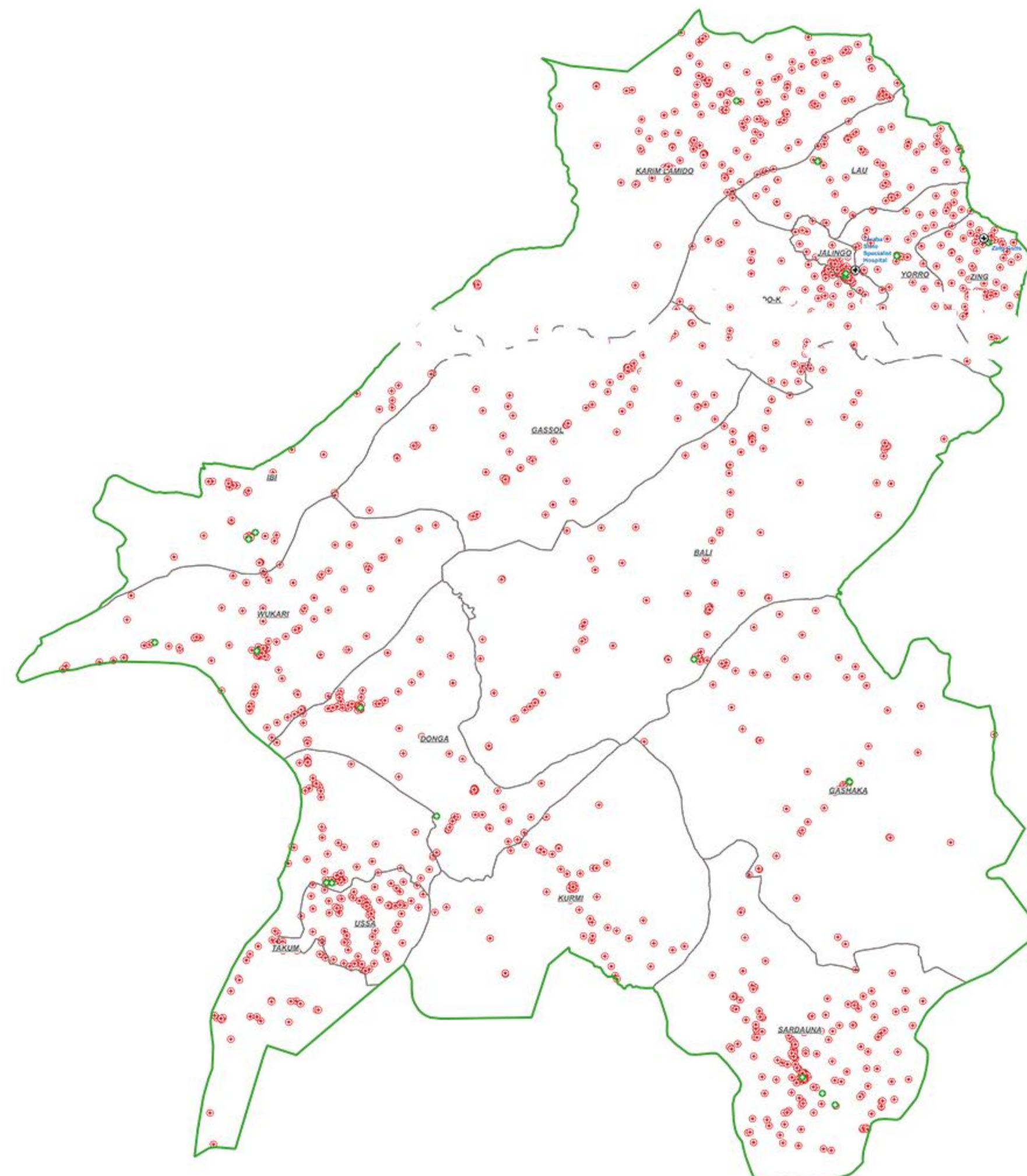
Pregnant Women

181,754

Health Facility Distribution



Taraba State has adequate number of health facilities for its population size based on the standard of 1 basic health unit per 10,000 population.



⊕ Primary Health Facility ⊕ Secondary Health Facility ⊕ Tertiary Health Facility □ Local Government Area Boundaries □ State Boundary

🏠 **Primary** **761**

Public: 761

Private: 0

🏠 **Secondary** **108**

Public: 16

Private: 92

🏠 **Tertiary** **1**

Public: 1

Private: 0

Health Facility Per Capita **2/10,000 Population**



Call to Action

The state government should:

1. Focus on enhancing the quality of existing facilities rather than building new ones.
2. Aim at ensuring at least one **FUNCTIONAL** primary health care centre per ward in line with the national PHC revitalization strategy.

Human Resource for Health



The number of skilled birth attendants is far below the recommended minimum standard required to be on path to 'ending preventable deaths by 2030'.



Health Training Institutions

Institution	Public	Private	Admission Quota
College(s) of Medicine	1	0	50
School(s) of Nursing & Midwifery	1	0	60
School(s) of Health Technology	2	1	500
School(s) of Pharmacy	-	-	-



Human Resource for Health

Occupation	Number	Density <i>(Per 10,000 Population)</i>	Target (WHO)
Doctors	60	<1	10
Nurses/Midwives	300	<1	30
Community Health Workers	450	<1	10
Pharmacists	22	<1	2.5



Call to Action

The State government should **PRIORITIZE** investments in Human Resource for Health (HRH) by:

1. Developing a realistic comprehensive HRH plan (including an implementation plan) that includes a minimum HR requirement for the different types of health facilities, taking into account the fiscal space of the state.
2. Recruiting based on the implementation plan (including incentives to retain).

Health Financing



Taraba state is not investing adequately in health as evidenced by the low annual budgetary allocation, poor budgetary release and a low per capita expenditure on health of N1,521.70; this may have contributed to some of the poor health outcomes in the state.

Allocation - FY 2022



Total State Budget

₦149.8 bn



Allocation to Health (%)

₦13.6 bn (9%)



Percentage Health Allocation to PHC

₦2.1 bn (16%)

Performance - FY 2022

State Budget Performance



₦85.2bn

57%

Health Budget Performance



₦5.5 bn

41%

Health Expenditure Per Capita



₦1,521.70



Call to Action

The state should gradually work towards \$29*(N12,000 approx.) per capita and invest more in health insurance.

Reference: (prorated state contribution from \$86 per capita – WHO recommended) World Health Organization. (2018).

Health Insurance



Taraba state has a functional state social health insurance scheme which has not made health insurance mandatory. Also, the non-release of equity fund and Government/employee contribution for the formal sector would negatively impact on the scheme.

Scorecard (2022)

Indicator	Status
Existence of a State Social Health Insurance Agency	●
Health Insurance Made Mandatory	●
Equity Funds Release	●
Government Contribution For Formal Sector	●
Employee Contribution For Formal Sector	●

Total No. of Enrollees



26,300

- Target Not Met
- Target Met
- No Data



Call to Action

The State Government to make health insurance mandatory, ensure regular and timely release of equity fund, and fast track government and employee contribution into the scheme.

PHCUOR Scorecard

Primary Health Care Under One Roof



Taraba State Government is falling behind in its implementation of the Primary Health Care Under One Roof policy – a governance reform to improve PHC implementation and integration.

Scorecard	
Indicator	Status
Existence of a State Primary Health Care Board	●
Existence of Approved Minimum Service Package That Is Linked To SSHDP	●
Existence of Costed Service Delivery/Investment Plan	●
Provision Made For Investment Plan In The Annual Budget of The Last Year	●
PHC Programmes And Staff Moved To SPHCB From SMoH and SMoLGA	●

● Target Not Met
 ● Target Met
 ● No Data



Call to Action

The State Government should ensure that:

1. PHC programmes and staff are moved to SPHCB from SMoH and SMoLGA.
2. It develops a costed service delivery investment plan.
3. There is one **FUNCTIONAL** PHC per ward as per minimum service package for healthcare delivery outlined in the National Primary Health Care Development Agency (NPHCDA) guidelines for the revitalization of PHCs.

Nutrition Scorecard



Taraba state has a functional state committee on food and nutrition. However, the state does not have a nutrition department in relevant MDAs and most of the nutrition interventions are funded by partners which is not sustainable.

Scorecard	
Indicator	Status
Existence of State Committee on Food and Nutrition	●
Presence of Nutrition Departments In Relevant MDAs	●
Budget Line For Nutrition In Key MDAs	●
Release of Fund For Nutrition (2022)	●
Availability of Multi-Sectoral Plan of Action For Nutrition	●
Availability of Government-Owned Creche	●
Approved Six Months Paid Maternity Leave.	●
Government Spending Greater than/Equal to Partner Spending	●

● Target Not Met
 ● Target Met
 ● No Data/Missing Validation



Call to Action

The state government should:

1. Set up nutrition departments in relevant MDAs (- at minimum in the following MDAs: Health, Agriculture, Budget and Planning, Women Affairs, State Primary Health Care Board).
2. Develop MSPAN and ensure prompt release of funds for its implementation.
3. Approve 6 months paid maternity leave.
4. Increase its investments in nutrition intervention programmes.

Drug Management Agency (DMA) Scorecard



Taraba State does not have a Drug Management Agency.

Scorecard	
Indicator	Status
State Has Established An Autonomous DMA Backed By Law	
DMA Is Capitalized	
At Least 60% Of The Focal Ward PHCs Is Capitalized	
DMA Has Pharmagrade Warehouse With Adequate Capacity	
State Has A Single Supply Chain System	
State Manages Last Mile Delivery	

- Target Not Met
- Target Met
- No Data



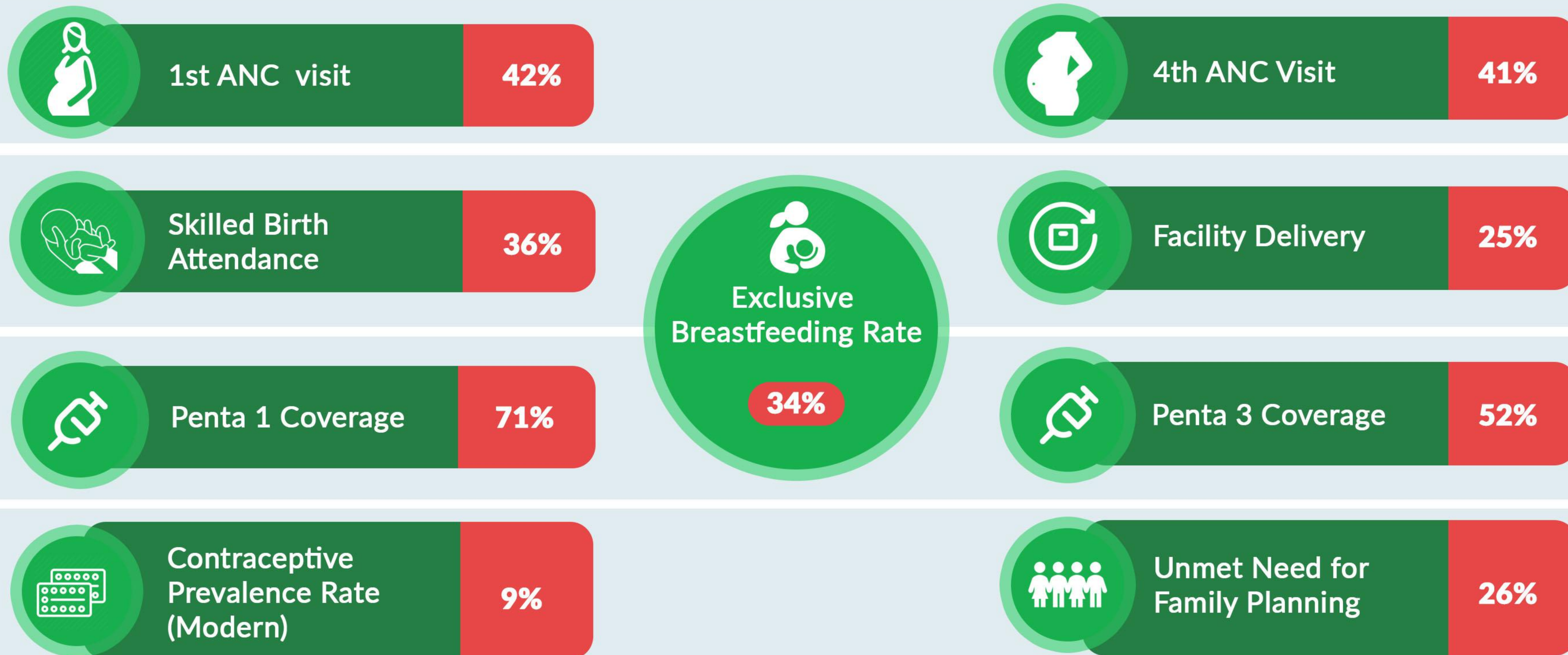
Call to Action

The State Government to urgently set up a Drug Management Agency to ensure availability of quality and affordable essential medicine in all health facilities within the state.

Access and Service Utilization...



There is poor access to and utilization of antenatal, delivery, immunization and family planning services. However, only a quarter of children under six months of age are exclusively breastfed.



Call to Action

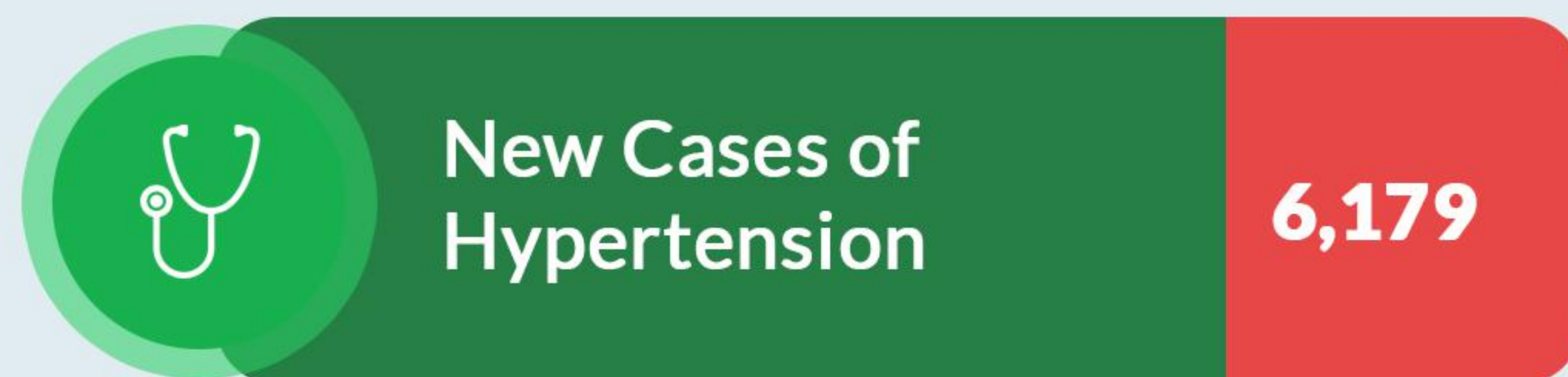
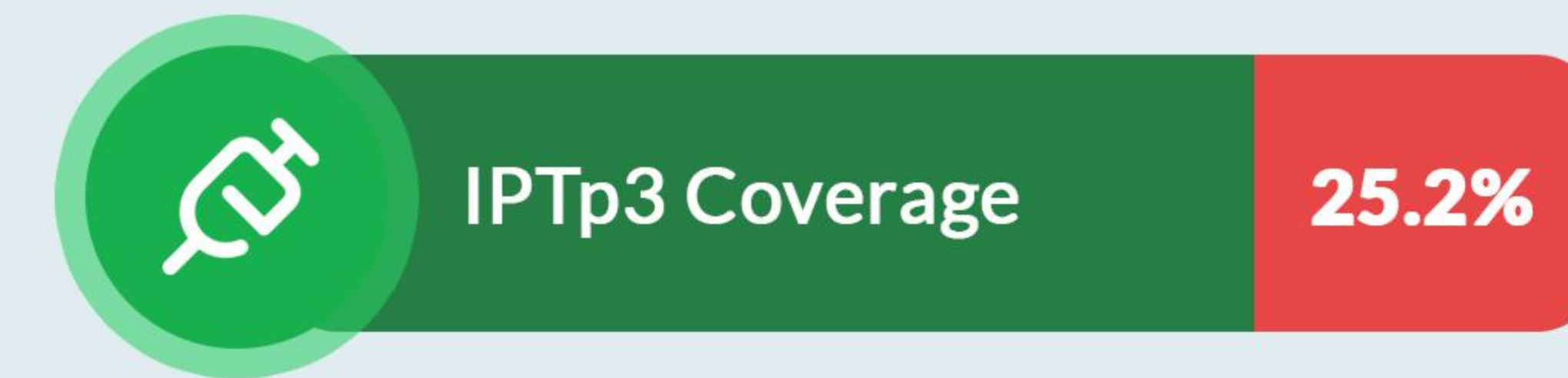
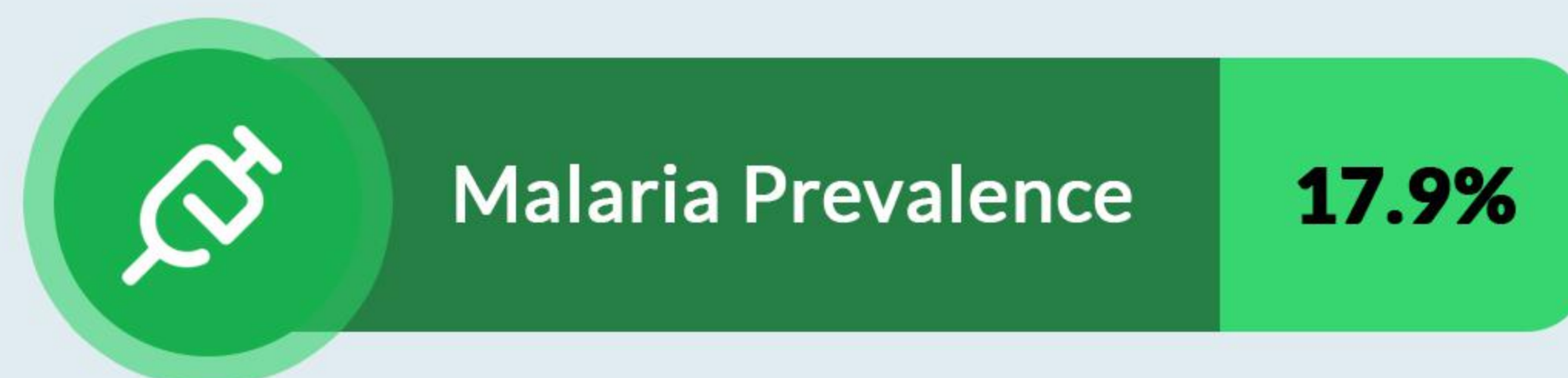
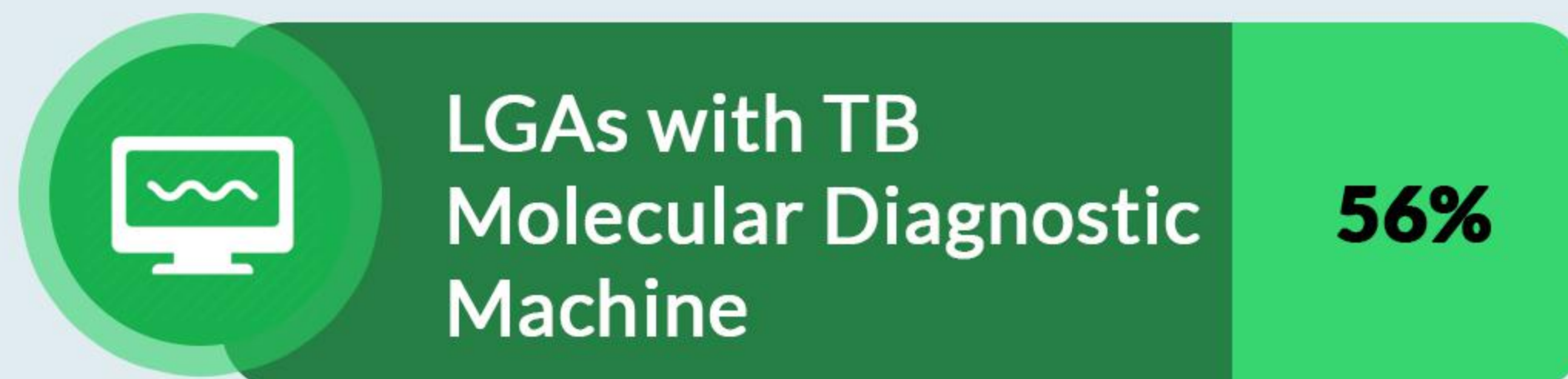
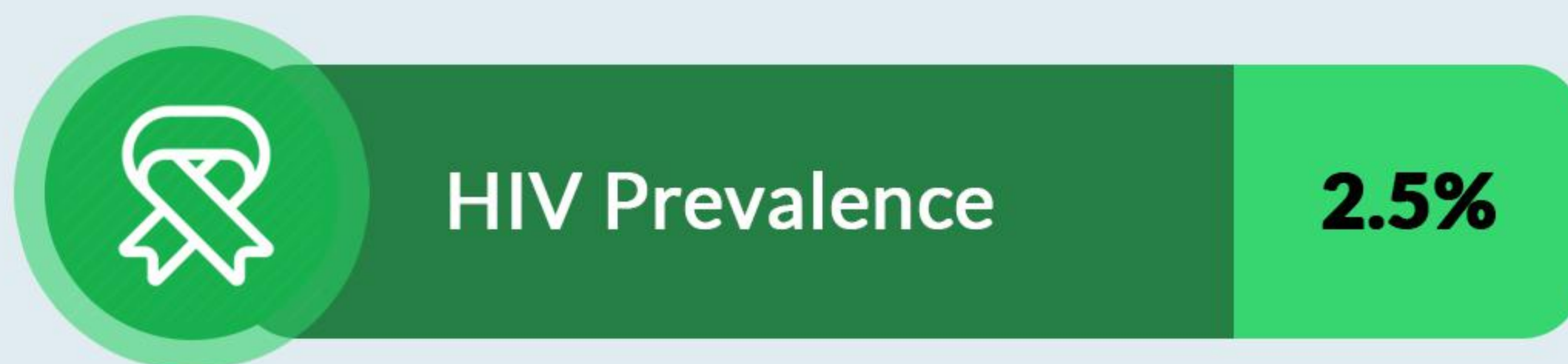
The state government should:

1. Improve in its performance on antenatal, delivery and immunization services.
2. Identify and address barriers to access and utilization of family planning services.
3. Promote exclusive breastfeeding.

Access and Service Utilization



The state has a low network of TB molecular diagnostic machines, a high unmet needs in terms of treatment for Children living with HIV and only provides 3 doses of malaria prophylaxis for a quarter of its pregnant women.



Call to Action

The State Government should ensure at least one functional molecular diagnostic machine per LGA, scale up ART treatment for CLHIV and expand coverage of IPTp3.

CLHIV – Children Living with HIV, ART – Antiretroviral Therapy, IPTp3 - Intermittent Preventive Treatment of Malaria for Pregnant Women (3rd dose +)
Reference: HIV health Sector Report 2021, NTBLCP, NMEP, DHIS2.

Health Outcomes



The state has pockets of zero-dose children, high numbers of children with stunting & wasting, and unacceptably high numbers of childhood mortalities in the state.



Zero Dose Children

40,061



No. of Children with Stunting

125,801



No. of Children with Wasting

5,188



No. of Children who Die before 28 Days of Life (Yearly)

3,432



No. of Children who Die before 1st Birthday (Yearly)

7,140



No. of Children who Die before 5th Birthday (Yearly)

9,696



Call to Action

The State Government urgently needs to prioritize investments in maternal and child healthcare services, including nutrition interventions, and immunizations to improve the health outcomes of children in the state. It is also important for the state to work with key partners to identify and target communities with unvaccinated children.

- i. Stunting: Children Shorter in Height-for-Age
- ii. Wasting: Children with Low Weight-for-Height
- iii. Zero-dose: Children who failed to receive any routine vaccination - never reached by routine immunization services

Flagship Projects



| This page details the key flagship projects ongoing in Taraba State that the Government needs to sustain.

S/N	Title	Description
1.	Gavi	Leadership, Management and Coordination, Service Delivery, Demand Generation, Data management and Health information, Supply Chain and Logistics, and Human Resource for health.

Partner Mapping



S/N	Implementing Partner	Intervention	Geographical Coverage
1	Achieving Health Nigeria Initiative (AHNI)	HIV	State Wide
2	Data for Impelementation	HIV	State Wide
3	Elizabeth Glasier Paediatrics Aids Foundation	HIV	State Wide
4	FHI 360	Health	State Wide
5	GAVI	Immunization & Health Systems Strengthening	State Wide
6	Global Health - Plus Public Initiative	Health	State Wide

Partner Mapping



S/N	Implementing Partner	Intervention	Geographical Coverage
7	KNCV	TB	State Wide
8	Maigodiya Cneter for Youth Development	Health	State Wide
9	Management Science for Health	Malaria	State Wide
10	Marie Stopes International	Family Planning	State Wide
11	Momentum Country and Global Leadership	Reproductive Health & Nutrition	State Wide
12	Pro Health International	Health, HIV	State Wide

Partner Mapping



S/N	Implementing Partner	Intervention	Geographical Coverage
13	Rise/USAID(HIV)	HIV	State Wide
14	Society for Family Health	Health	State Wide
15	TY Danjuma Foundation	Health	State Wide
16	WHO	Health Financing	State Wide
17	Women & Children Health Empowerment Foundation	Research	State Wide

Summary of Key Actions



Health Facility Distribution

The state government should:

1. Focus on enhancing the quality of existing facilities rather than building new ones.
2. Aim at ensuring at least one **FUNCTIONAL** primary health care centre per ward in line with the national PHC revitalization strategy.

Human Resource for Health

The State Government should **PRIORITIZE** investments in Human Resource for Health (HRH) by:

1. Developing a realistic comprehensive HRH plan (including an implementation plan) that includes a minimum HR requirement for the different types of health facilities, taking into account the fiscal space of the state.
2. Recruiting based on the implementation plan (including incentives to retain).

Health Financing

The state should work towards \$29*(N12,000 approx.) per capita and invest more in health insurance.

Health Insurance

The State Government to ensure regular and timely release of equity fund, and fast track government and employee contribution into the scheme.

Primary Health Care Under One Roof

1. PHC programmes and staff are moved to SPHCB and SMoH and SMoLGA.
2. It develops a health investment plan.
3. There is one **FUNCTIONAL** PHC per ward as a minimum service package for healthcare delivery outlined in the National Primary Health Care Development Agency (NPHCDA) guidelines for revitalization of PHCs.

Summary of Key Actions



Nutrition

The state government should:

1. Set up nutrition departments in relevant MDAs (- at minimum in the following MDAs: Health, Agriculture, Budget and Planning, Women Affairs, State Primary Health Care Board).
2. Develop MSPAN and ensure prompt release of funds for its implementation.
3. Approve 6 months paid maternity leave.
4. Increase its investment in nutrition intervention programmes.

Drug Management Agency

The State Government to urgently set up a Drug Management Agency to ensure availability of quality and affordable essential medicines in all health facilities within the state.

Access and Service Utilization

The State Government should:

1. Improve its performance on antenatal and immunization services.
2. Identify and address barriers to access and utilization of family planning services.
3. Promote exclusive breastfeeding.

Also, the State Government should ensure at least one functional molecular diagnostic machine per LGA, scale up ART treatment for CLHIV and expand coverage of IPTp3.

Health Outcome

The State Government urgently needs to prioritize investment in maternal and child healthcare services, including nutrition interventions, and immunization to improve the health outcomes of the children in the state. It is also important for the state to work with key partners to identify and target communities with unvaccinated children.



About the NGF Secretariat

The Nigeria Governors' Forum

The Nigeria Governors' Forum (NGF) was founded in 1999. It is a platform for the elected Governors of the 36 states of Nigeria that promotes collaboration amongst the Governors, irrespective of their party affiliation, to share experience, promote co-operation, and good governance at the subnational level.

The NGF Secretariat

The NGF is supported by a secretariat which is the technical and administrative arm of the Nigeria Governors' Forum. It is a policy hub and resource centre that sets agendas & priorities to enable the forum to meet its set objectives. The Secretariat serves as an interface between federal MDAs, development partners, and states. The Secretariat has several units including Health, IGR, Economics, Legal, Education, Agriculture, Peace, and Inclusive Security.

The Health Team

The health unit of the NGF Secretariat is responsible for coordinating all health-related interventions being championed by the secretariat. It is committed to catalysing a stronger health system and better health outcomes at the subnational level in line with national goals and strategies.

Our Vision

Is to be the leading go-to resource and learning hub for catalysing subnational health development and contributing to health SDGs.

Our Mission

Is to keep the NGF informed and up-to-date on health priorities and promote evidence-based decision-making & actions, accountability, and learning for better health outcomes at the subnational level.

What We Do

We leverage our convening powers to support States to achieve their health goals through Evidence Generation, High-Level Advocacy, Resource Mobilization, Accountability and Partnerships, and Capacity Building. We also engage with key federal MDAs, such as the FMOH, NHIA, NPHCDA, FMFBNP, and Office of the Vice President.

Our Team

The health team is a multidisciplinary team that includes high-profile professionals that have excelled in different fields of endeavour including Advocacy, Health Policy Analysis, Health Systems Strengthening, Public Health, Health Financing, Health Information System, Immunization, Supply Chain, Monitoring, Evaluation, and Learning.

Our Health Partners

BMGF, ADF, GAVI, UNICEF, R4D, NHED.

NIGERIA GOVERNORS' FORUM



📍 51, Lake Chad Crescent,
Maitama, Abuja,
Federal Capital Territory,
Nigeria

✉ Info@ngf.org.ng

☎ +234 (0) 92920025 | +234 (0) 92920026

🌐 <http://www.nggovernorsforum.org>