



National Policies and
Strategies for Food,
Land and Water Systems
Transformation

Plant Health Initiative: Brief introduction & policy aspects

Alejandro Ortega-Beltran

Senior Plant Pathologist, IITA, Nigeria



*Healthy Plants for
a Healthy Planet*

Aim: To protect agri-food systems of the LMICs in Africa, Asia and Latin America from devastating pest and disease incursions/outbreaks, by leveraging/ building viable networks across an array of national, regional and global institutions.

Focus: High-impact and/or high-risk pests and diseases causing major food security shocks and severe economic impacts in the LMICs.

Demand partners defined national and regional needs; will benefit from the innovations and networks developed and deployed through Plant Health Initiative.

Innovation partners co-create and complement plant health innovations under 5 Work Packages in the Initiative.

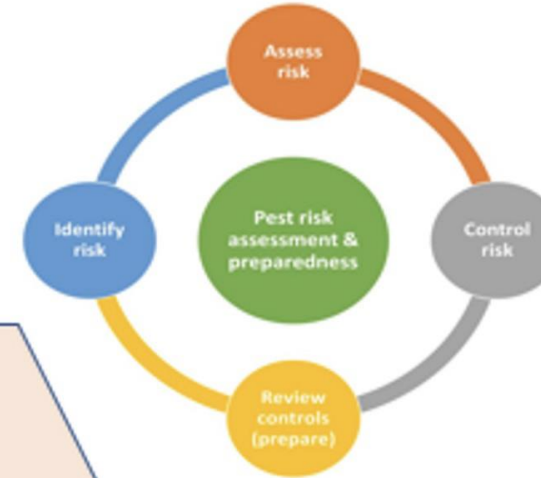
Scaling partners stimulate demand and deploy the plant health solutions to the demand partners and farming communities in the target countries.

PHI Work Packages



National Policies and
Strategies for Food,
Land and Water Systems
Transformation

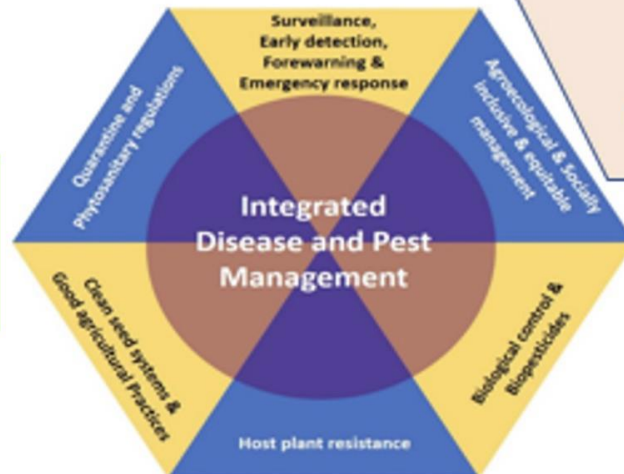
**WP1: Threat
Identification &
Characterization**



**WP2:
Preparedness and
Rapid Response**

**WP5:
Gender & Social
Inclusion
Impact
Assessment
Communications**

**WP3: Integrated
Pest and Disease
Management**



**WP4: Integrated
Mycotoxin
Management**

PHI: Key Expectations by 2024

- 1. Global Plant Diagnostic & Surveillance Networks**, using novel diagnostic and surveillance tools to effectively counter existing/emerging plant health threats
- 2. Epidemiological modelling data & decision support tools for pest risk assessment and preparedness** to counter prioritized insect-pests and diseases, including new invasions
- 3. Global Plant Health R4D Consortium**
- 4. Eco-friendly and climate-smart IPDM innovations for smallholders**
- 5. Public-private partnerships** on IPDM and mycotoxin management
- 6. Tools and strategies for developing and deploying demand-driven, equitable and scalable IPDM & IMM innovations**
- 7. Science-based Plant Health Policy Briefs**

Collaboration with other initiatives



+

**Regional Integrated
Initiatives in ESA, WCA,
CWANA, South Asia,
SE Asia & LAC, and
National Policies and
Strategies**

Policy aspects addressed by PHI

- Multi-and inter-disciplinary collaboration
- Support region-and country-led development
- Impact assessment and feedback loops
- Gender and social inclusion
- Communications for policy change
- Facilitating strong partnerships and scaling

Engaging regional and national stakeholders is key for successful impact assessment

Before impact assessment

Inform innovations with potentially high impacts in suitable locations

During impact assessment

Help identify adoption constraints faced by smallholders and communities

Help design effective promotion methods to increase adoption

Help with data collection and implementation of field experiments

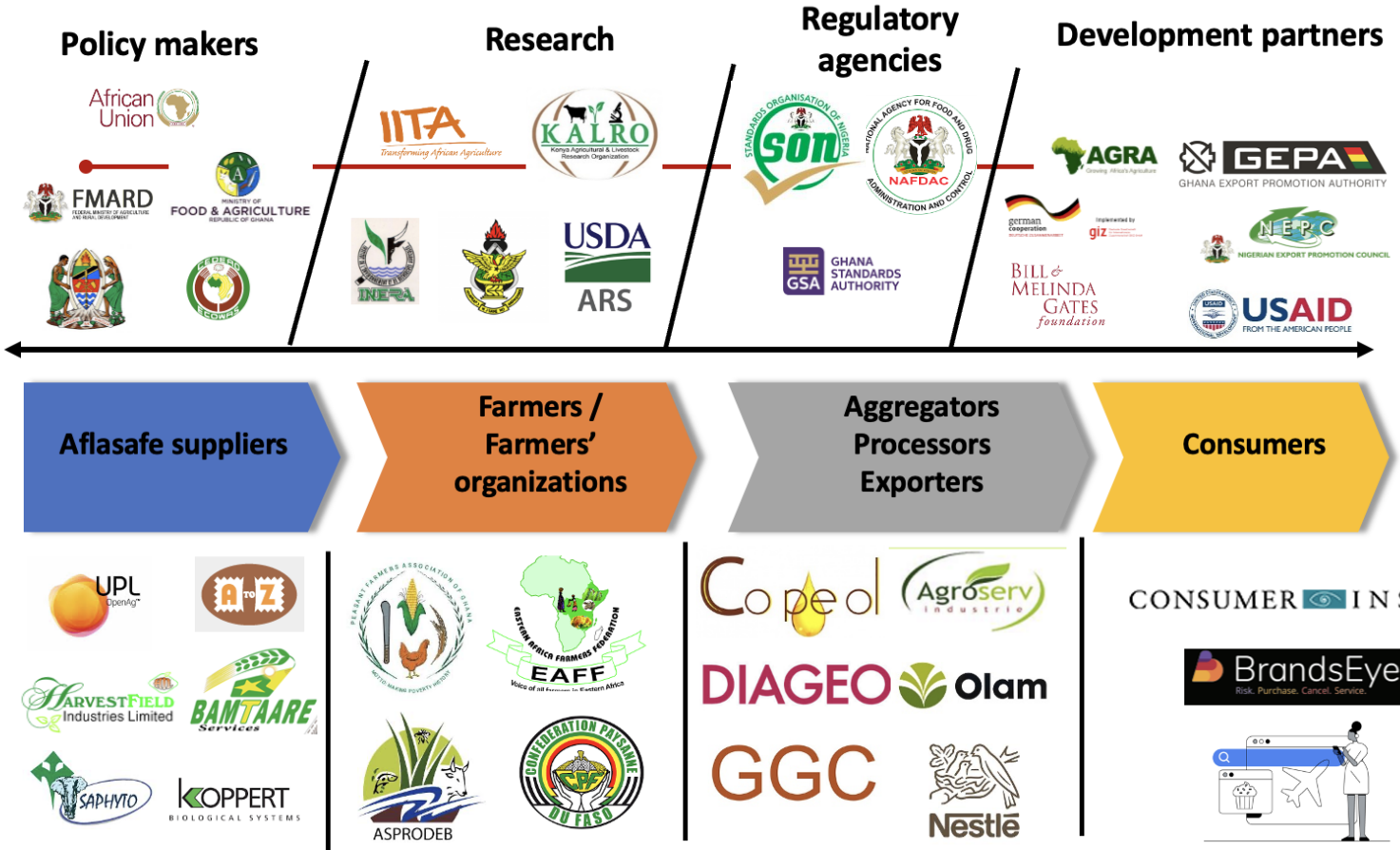
After impact assessment

Help to disseminate findings and enable policy changes

PHI Policy related outcomes

- **Development of awareness, advocacy, and policy briefs with actionable recommendations to target countries**
- **Enhance uptake (acceptability and use) of plant health innovations**
- **Based on science-based plant health policy briefs, investors and decision makers in target regions create an enabling environment for research for development & scaling of plant health innovations**

Building an ecosystem to drive the scaling



- ### Impact
- Smallholder consumption of mycotoxin-safe crops increases
 - Farmers accessing premium markets
 - Millions of tons of safe crops produced
 - Capacity of stakeholders across the value chain to mitigate mycotoxins enhanced

PHI need to converge efforts of relevant stakeholders to enforce food security and safety policies

**Thanks for your
attention!**



National Policies and
Strategies for Food,
Land and Water Systems
Transformation