

Gombe State

Coordinates: 10°15′N 11°10′E﻿ / ﻿Coordinates: 10°15′N 11°10′E

From Wikipedia, the free encyclopedia

Gombe State, located in northeastern Nigeria, is one of the country's 36 states; its capital is Gombe.

Gombe State, nicknamed the 'Jewel in the Savannah', was formed in October 1996 from part of the old Bauchi State by the Abacha military government. The state has an area of 20,265 km² and a population of around 2,353,000 people as of 2006.^[2] Of the population, approximately 7.8% are HIV-infected.^[3]

Contents

- 1 Administrative divisions
- 2 Demographics
- 3 References
- 4 External links

Administrative divisions

Gombe is divided into eleven Local Government Areas. They are:

- Akko
- Balanga
- Billiri
- Dukku
- Funakaye
- Gombe
- Kaltungo
- Kwami
- Nafada
- Shongom
- Yamaltu/Deba

Demographics

Gombe State is mainly populated by Fulani people. [1]


References

- ↑ *^ a b* "C-GIDD (Canback Global Income Distribution Database)". Canback Dangel. http://www.cgidd.com. Retrieved 2008-08-20.
- ↑ "Nigerian Population 2006". *NigerianNews*. http://www.nigeriannews.com/census/census2006.htm. Retrieved 2007-05-09.
- ↑ "State Population and Development Programmes". *Nigeria.unfpa.org*. United Nations Population Fund. http://nigeria.unfpa.org/unfpastates.htm. Retrieved 2007-05-09.

External links

- Nigerian Government

Retrieved from "http://en.wikipedia.org/wiki/Gombe_State"

Gombe State	
State nickname: Jewel in the Savannah	
Location	
	
Statistics	
Governor (List)	Mohammed Danjuma Goje (PDP)
Date Created	1 October 1996
Capital	Gombe
Area	18,768 km ² Ranked 21st
Population 2006 est.	Ranked 33rd 2,353,000
GDP (PPP) Total	2007 (estimate) \$2.50 billion ^[1]
Per Capita	\$1,036 ^[1]
ISO 3166-2	NG-GO

Categories: States of Nigeria | Gombe State | States and territories established in 1996 | Nigeria geography stubs

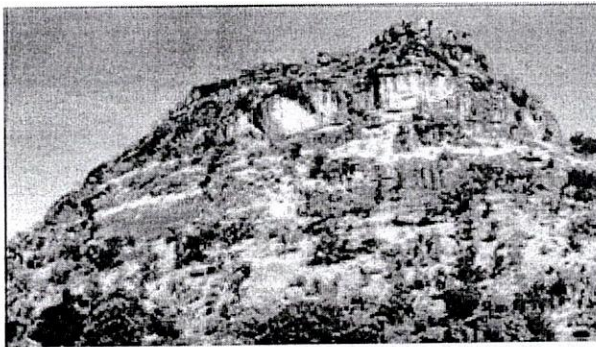
- This page was last modified on 25 January 2010 at 08:51.
 - Text is available under the Creative Commons Attribution-ShareAlike License; additional terms may apply. See Terms of Use for details.
- Wikipedia® is a registered trademark of the Wikimedia Foundation, Inc., a non-profit organization.

[Click Here To Print](#)
[Back To Page](#)


GOMBE STATE

BACKGROUND INFORMATION

Historical Development: Gombe State, "Jewel in the Savannah," was created on 1st October, 1996 by the General Sani Abacha administration. Its creation was a fulfilment of the aspirations of the people who, for long, had been yearning for a state of their own out of the then Bauchi State.



Weathered
Inselberg, Kaltungo

The genesis of the struggle dates back to 1979. Since its creation, the state has been growing fast, blessed with abundant physical, human and economic resources.

One of the criteria for an area to qualify for State creation is economic viability. There is no doubt that Gombe fulfilled that criterion.

It is a confluence of economic activities, by its position as the meeting point for business people from the surrounding states. The states include: Borno and Yobe to the north and east, Taraba and Adamawa to the south, and Bauchi to the west. This advantage has made the state vibrant in all respects.

resources, while the people are highly industri ous and enterprising. Thus, within the short period of its existence, it has made tremendous progress.

In addition, the land is blessed with natu ral

Location and Size: Gombe State is located between latitude 9°30' and 12°30'N and longitudes 8°45' and 11 °45'E of the Greenwich Meridian. It lies within the NorthEast region of Nigeria and occupies a total land area of about 20,265sq. km. The state had, by 1998, an estimated population of 1,820,415 inhabitants.

Administrative Areas: Gombe State comprised eleven Local Government Areas (LGAs) in 1999, the same number created in 1996 (see Map151 Gombe State Administrative) However, some of the LGAs, notably Akko, Dukku and Gombe have been in existence since 1976, as part of the then Bauchi State.

Indeed, most of the LGAs in the state today, were created in 1989 or 1992 and thus existed before 1996, when three new LGAs were carved out to make up the eleven the state now has (Table 15.1). The state, really and historically, corresponds largely to the Gombe Emirate under the Emir of Gombe, and made up of five chiefdoms, viz. Cham, Dadiya, Kaltungo, Tangale and Waja. It comprises such previously dependent and powerful emirates

and chiefdoms as Gombe, Tangele and Waja. Gombe town is the administrative capital of the state, as it has been for the Emirate, the seat of the Emir. Its population of about 200,000 makes it the largest centre in the state. It is also the commercial and zonal services headquarters in Nigeria for many Federal Government establishments, including NNPC, NEPA, NITEL Territorial Office, NIPOST Territorial Office and Nigerian Railway Corporation.