



# RIVERS STATE

INVESTORS' FORUM 2011

## RSUST NEW CAMPUS DEVELOPMENT PROJECT



Client:

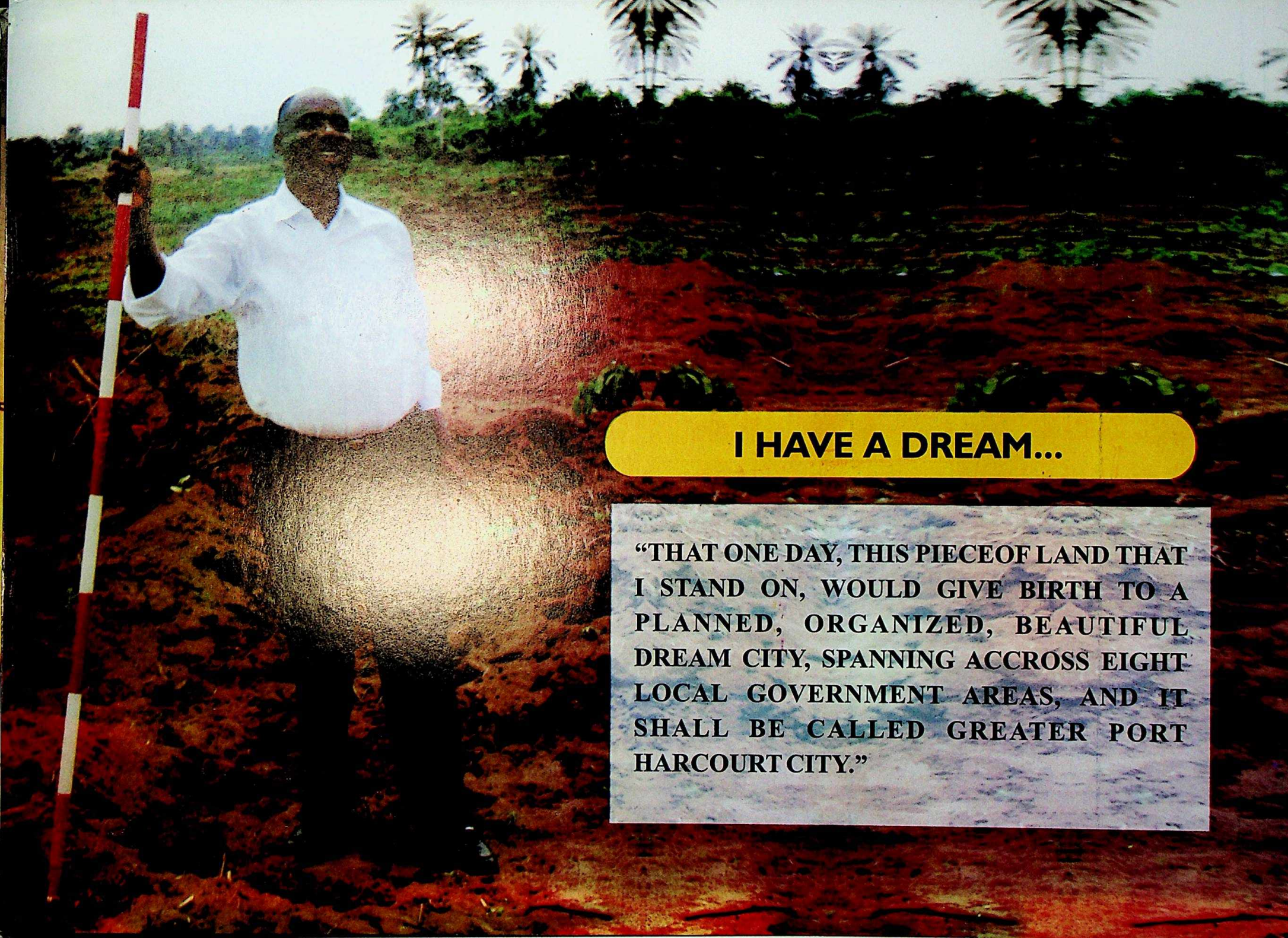
**THE GOVERNMENT OF RIVERS STATE**



Consultant:  
Architecture, Engineering and Urban Planning  
ANGEL ASENJO INTERNATIONAL CO LTD



Rt. Hon.  
**CHIBUIKE ROTIMI AMAECHI** CON  
Executive Governor of Rivers State



## **I HAVE A DREAM...**

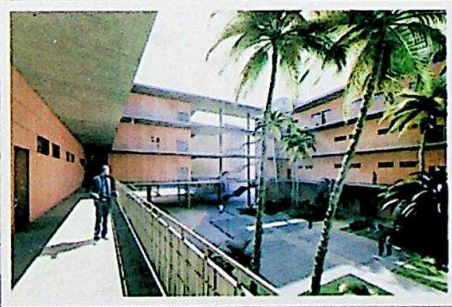
**“THAT ONE DAY, THIS PIECE OF LAND THAT I STAND ON, WOULD GIVE BIRTH TO A PLANNED, ORGANIZED, BEAUTIFUL DREAM CITY, SPANNING ACCROSS EIGHT LOCAL GOVERNMENT AREAS, AND IT SHALL BE CALLED GREATER PORT HARCOURT CITY.”**



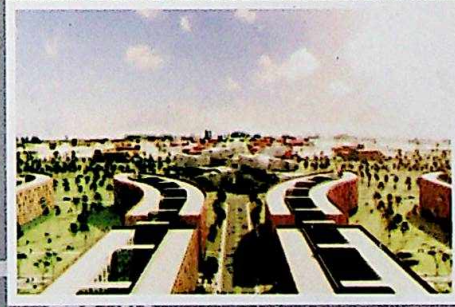
**Overall Master Plan for the New Campus of the Rivers State University of Science and Technology in Port Harcourt, Nigeria**



**View over the University Senate Building**



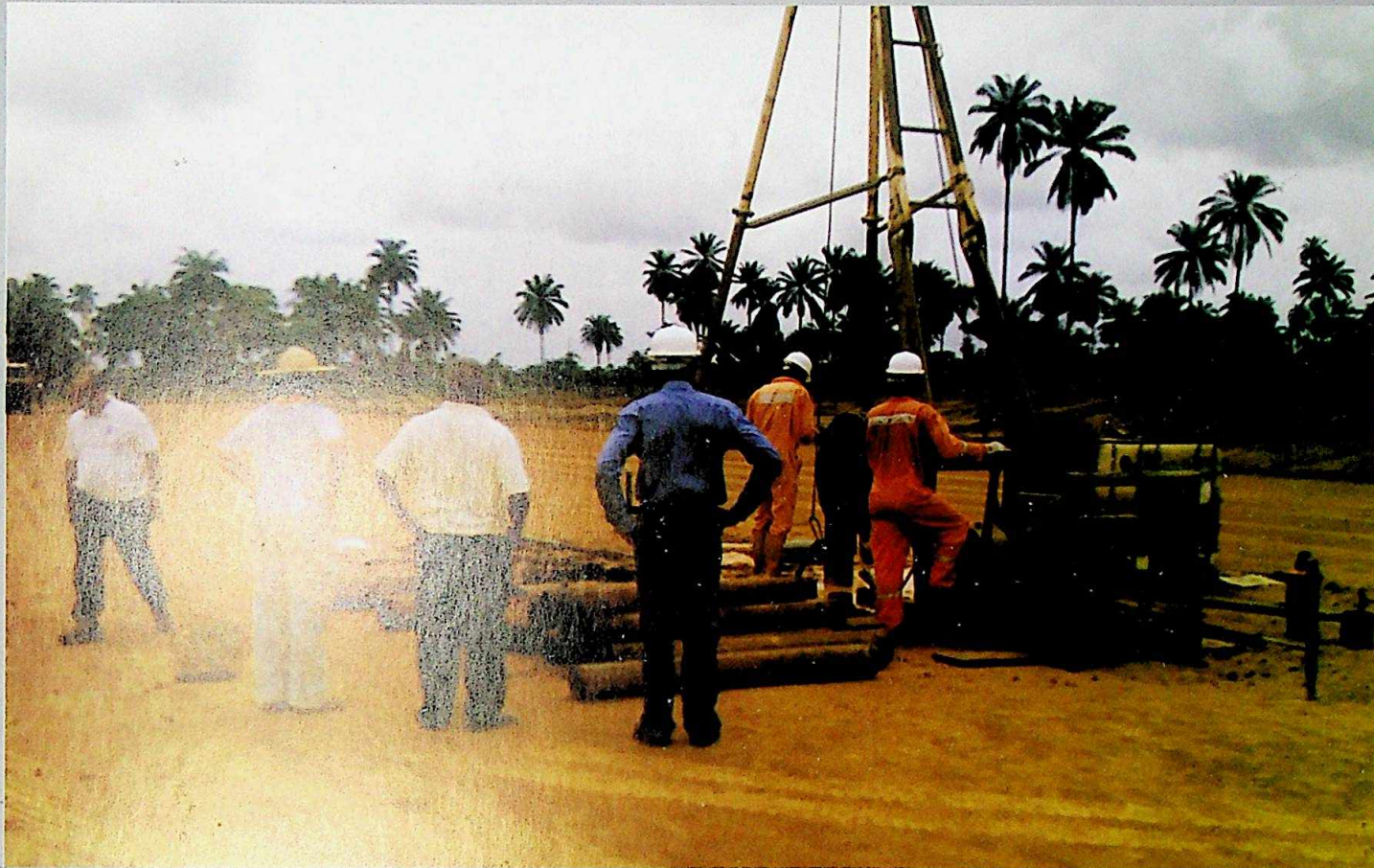
**View from an interior courtyard of a University School**



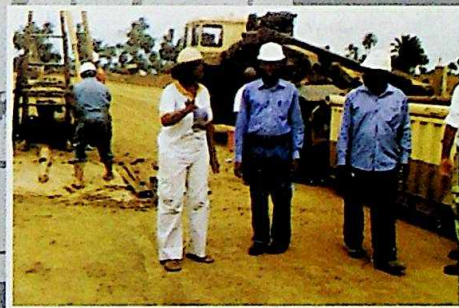
**View of the campus from the student residential area**

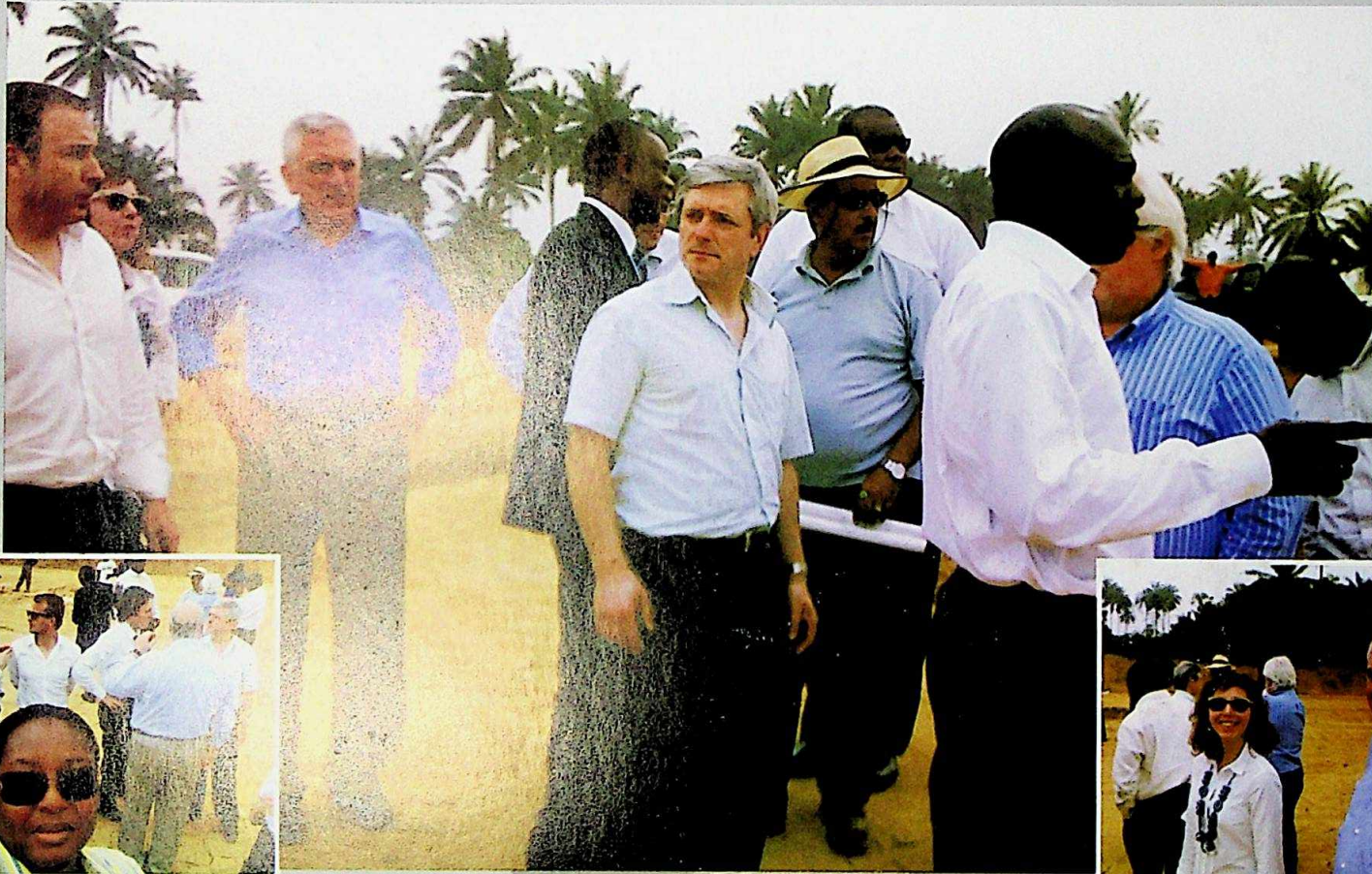


**View of the main entrance of Science Faculty**



**Geotechnical Survey by FUGRO Nigeria Limited, 2010**

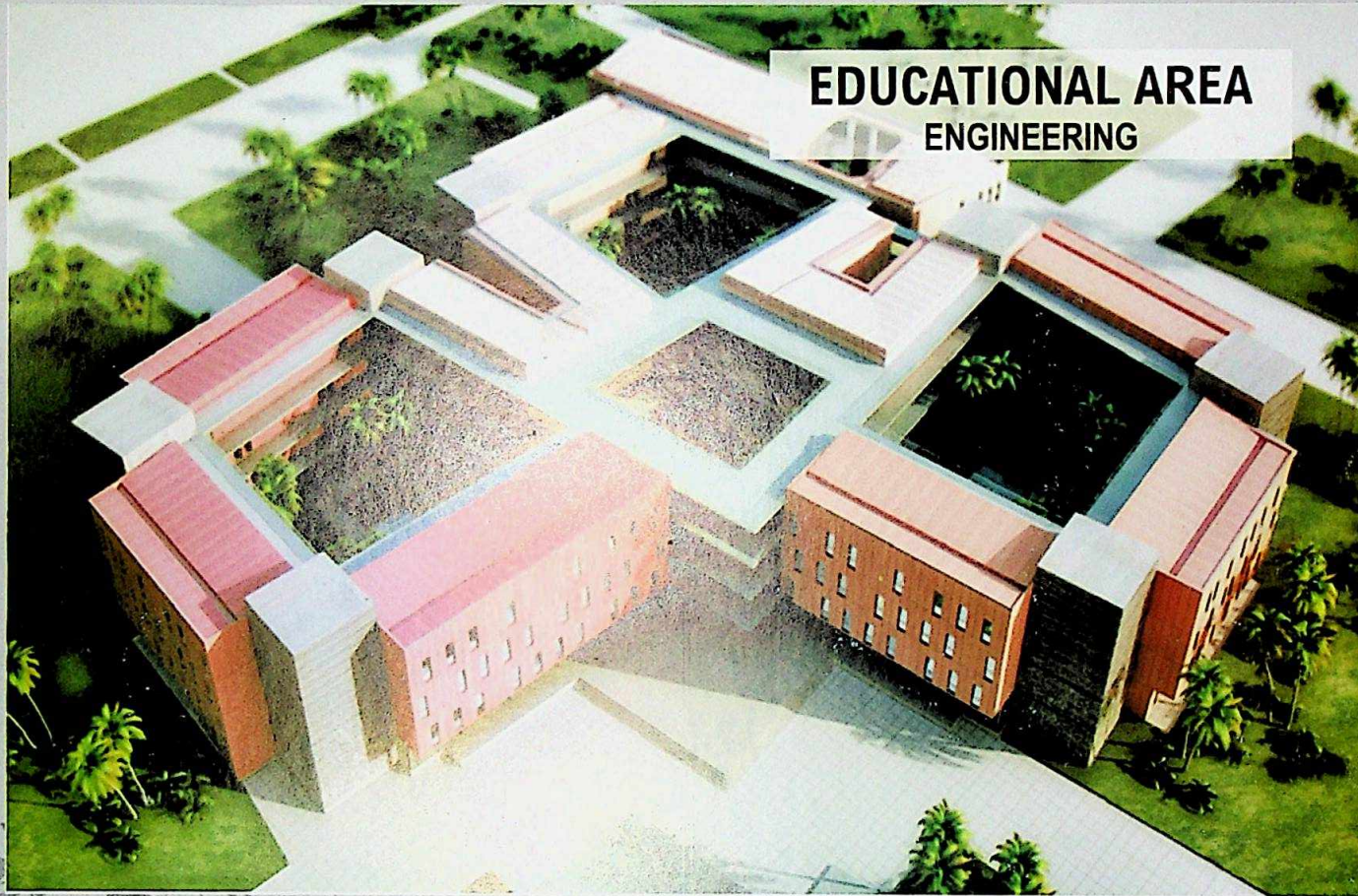




Visit to site by a team of Construction Companies in preparation for The Garden City Games.  
CIEC ENGINEERING - France & ANGEL ASENJO INTERNATIONAL COMPANY - Spain



Work at site by ZEROCK CONSTRUCTION NIGERIA LIMITED



## EDUCATIONAL AREA ENGINEERING

**AREA:** 25,883.07 m<sup>2</sup>

**HEIGHT:** 4 storeys (basement + ground floor + 3 floors)

**DESIGN:**

**No Classrooms:** 66

**No Laboratories:** 18

**No. Departments:** 8 (with common meeting rooms). Each Department has the Head of department office with a secretary, a general secretary, from five to seven individual offices for professors and from six to eight double offices for lecturers or assistant professors

**Departments:** Electrical Engineering, Computer Engineering, Chemical Engineering, Petrochemical Investments, Civil Engineering, Mechanical Engineering, Agriculture Engineering and Marine Engineering, and an Investments Department. Next to the main building is the workshop, that have several laboratories and workshop for different fields. Dean's office with secretary, a meeting room and a working area

**Parking Area:** 895,52 m<sup>2</sup>, with 26 parking lots

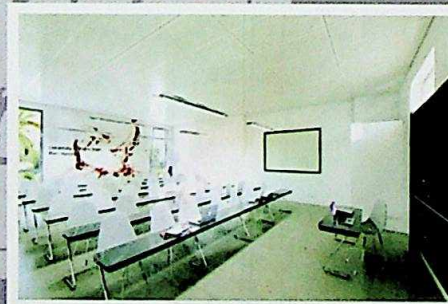
**Lecture Hall:** Capacity 376 seats

**Security Point:** Reception and Secretary Administration area, with the administration secretary, archives and working areas Toilets, minimarket, bookshop, reprography and installation rooms

Aerial view of Management School



View of the interior of the University Senate Building



View of a classroom in a faculty building



View of the Lecture Hall of an educational building



View of the Library in an educational building



## EDUCATIONAL AREA Graduate School

AREA: 10,266.04m<sup>2</sup>

HEIGHT: 4 storeys (basement + ground floor + 3 floors)

DESIGN:

**No. Classrooms:** 36 for postgraduates

**No. Departments:** 54 rooms for professor of different Departments (with common meeting rooms).

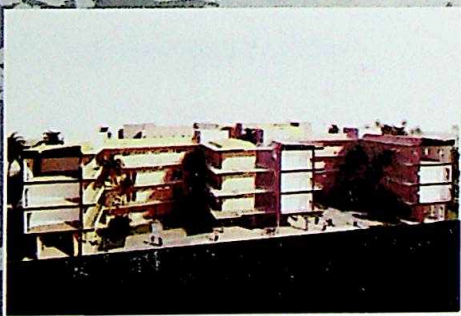
Archives and Research Area. Sciences.

**Parking Area:** 823,97 m<sup>2</sup>, with 24 parking lots

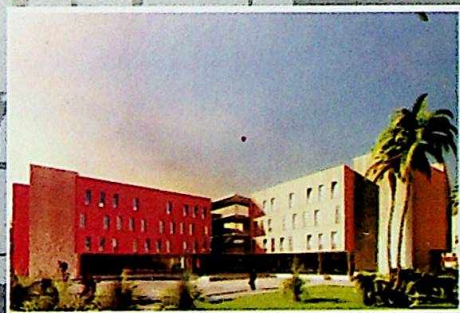
**Lecture Hall:** Capacity 296 seats  
Security Point, Reception and Secretary Administration area, with the administration secretary, archives and working areas

Toilets, minimarket, bookshop, reprography and installation rooms

Aerial view of Graduate School



Cross section in perspective of Science School



View of the main entrance of Engineering School



Interior view from the courtyard of Engineering School



View of a secondary facade of Engineering School

# EDUCATIONAL AREA

## Environmental Sciences



**AREA:** 17,752.39 m<sup>2</sup>

**HEIGHT:** 4 storeys (basement + ground floor + 3 floors)

**DESIGN:**

**No Classrooms:** 30

**No. Departments:** 5 (with common meeting rooms). Each Department has the Head of department office with a secretary, a general secretary, five individual offices for professors and six-seven double offices for lecturers or assistant professors

**Departments:** Architecture, Urban and Regional Planning, Estate Management, Quantity Surveying and Land Surveying. Dean's office with secretary, a meeting room and a working area

**Parking Area:** 885,60 m<sup>2</sup>, with 26 parking lots

**Lecture Hall:** Capacity 276 seats  
Security Point, Reception and Secretary Administration area, with the administration secretary, archives and working areas

Toilets, minimarket, bookshop, reprography and installation rooms.

Aerial view of the Faculty of Environmental Science



View of interior courtyard of the Faculty of Agriculture



View of main entrance of the Faculty of Science

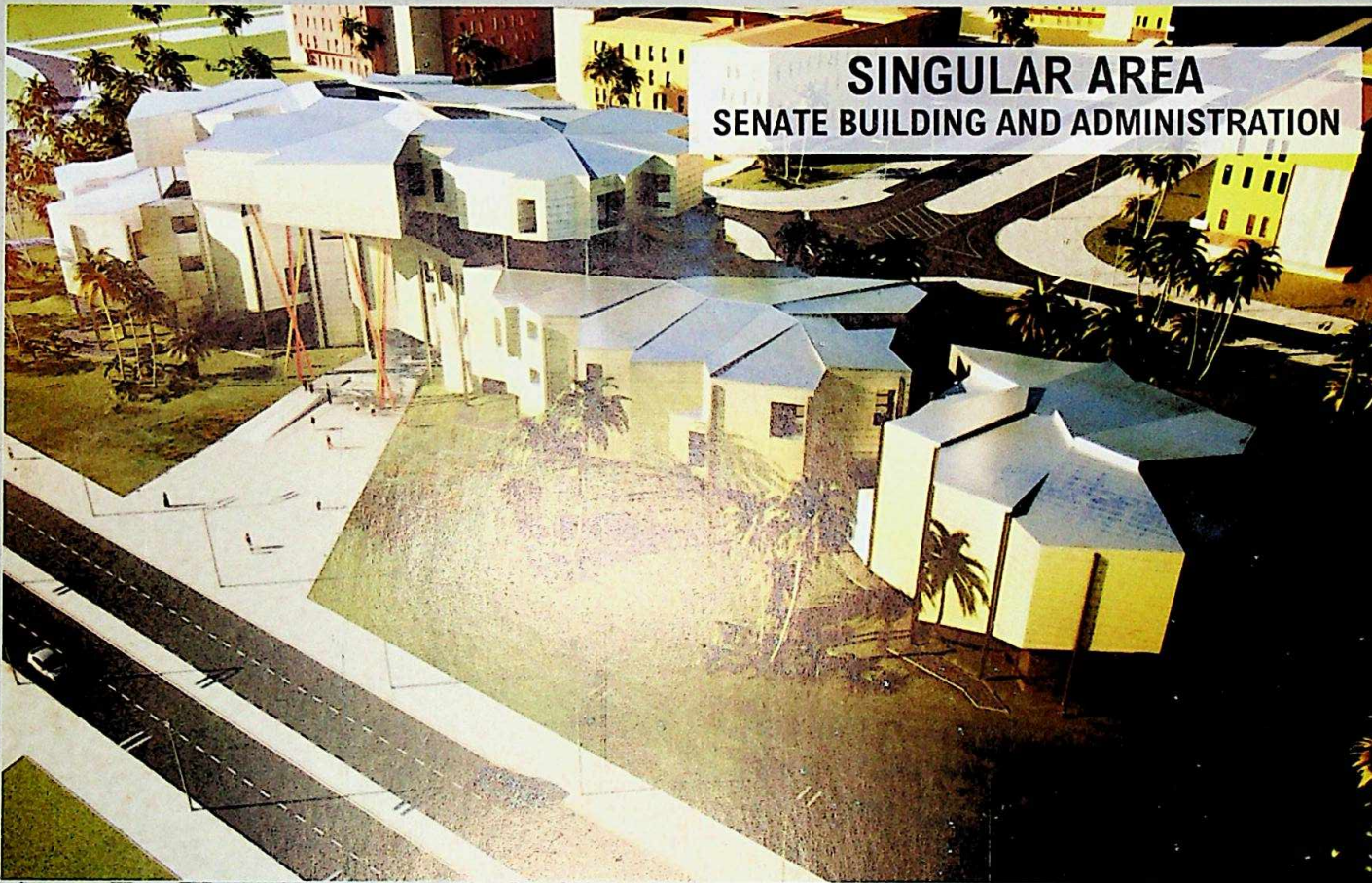


View of Faculty of Law



View of an Educational building





## SINGULAR AREA SENATE BUILDING AND ADMINISTRATION

**AREA:** 16,300.97 m<sup>2</sup>b

**HEIGHT:** 4 storeys (basement + ground floor + 3 floors)

**DESIGN:**

Singular Building with Ground floor and three floors, the upper one with an open-terrace floor with views to the whole University

Several Offices and Meeting rooms, for the personal that works coordinating the University.

Vice Chancellor's Office and his secretary and direct collaborators offices. Cafeteria of 385 m<sup>2</sup> and Exhibition Area of 600 m<sup>2</sup>.

University Senate Building of 1.000 m<sup>2</sup>.

**Parking Area:** 955 m<sup>2</sup>, with 56 parking lots

Security Point, Information Point, Reception and Secretary

Administration area, with the administration secretary, archives and working areas

Toilets and installation rooms

Aerial view of the University Senate Building and Administration block



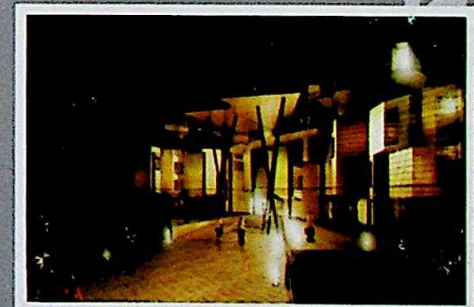
View of the University Senate Building and Administration block



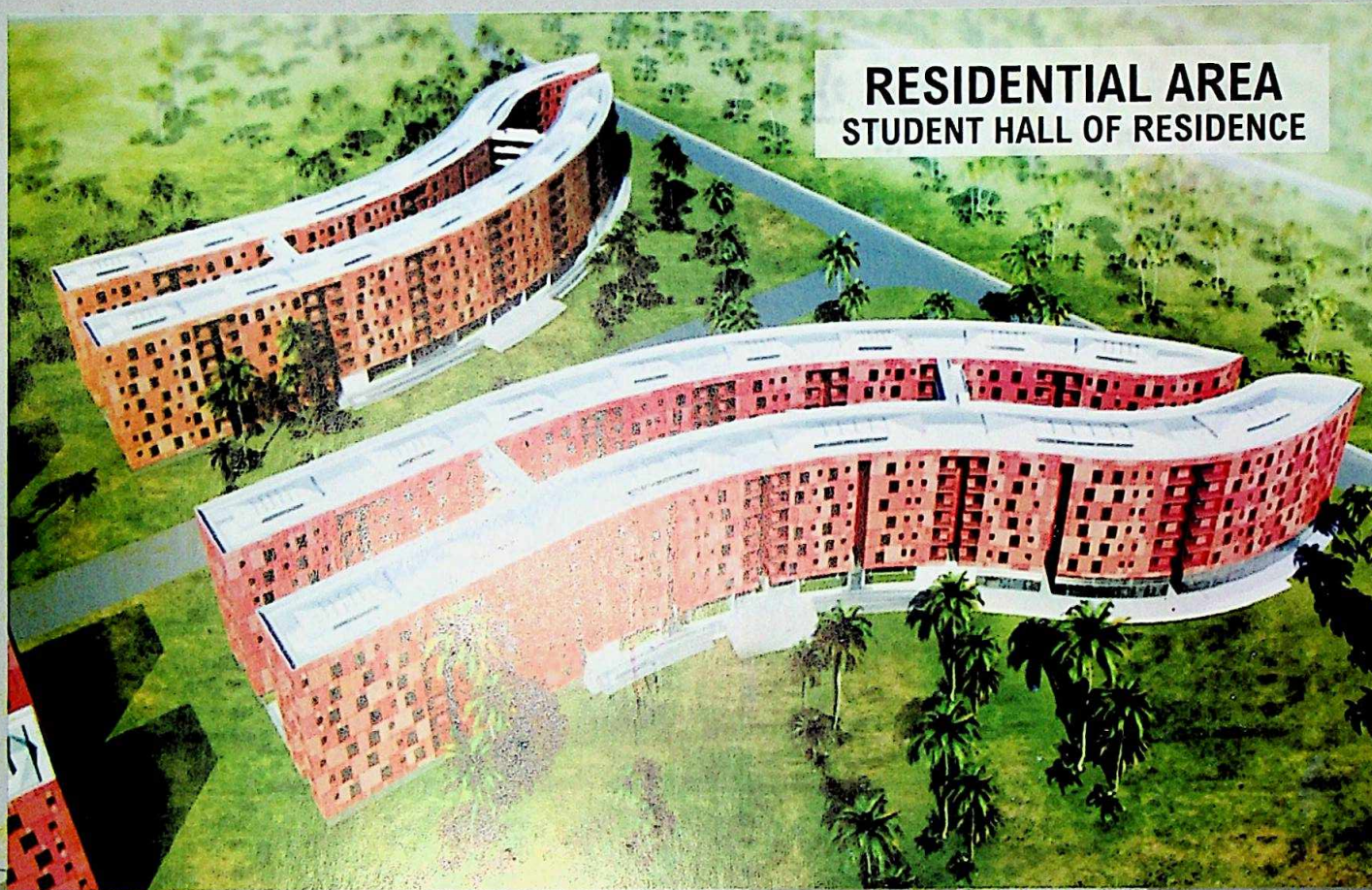
View of the University Senate Building and Administration block



View of the University Senate Building and Administration block and International Library



Night view of the University Senate Building and Administration block



## RESIDENTIAL AREA STUDENT HALL OF RESIDENCE

**AREA:** 33,675.37 m<sup>2</sup>b

**HEIGHT:** 7 storeys (ground floor + 6 floors)

**DESIGN:**

**No rooms:** 754 double rooms, 6 single rooms and 12 rooms for 4 students, which allows accommodating 1,562 students

**Ground floor:** 28 double rooms/ 56 students

**Other floors:** 121 double rooms, 1 single room and 2 rooms for 4 students/ 251 students (per floor)

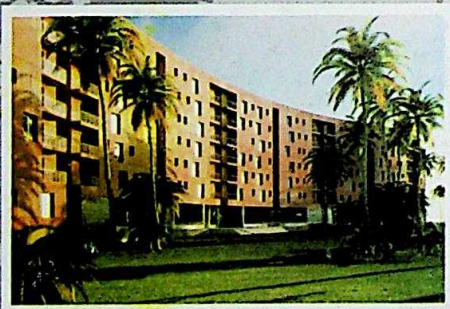
**Room size:** Average area of 25 m<sup>2</sup>, some of them have a terrace of 3.71 m<sup>2</sup>

**Parking Area:** 1,136.16 m<sup>2</sup>, with 32 lots

**Other Information:** Access with Security Point, Reception and Waiting area, and the common spaces or living areas (1390 m<sup>2</sup>), toilets

All bedrooms comprises a bathroom and two wardrobes.

Aerial view of a Student Hall of Residence



View of the main facade of a Student Hall of Residence



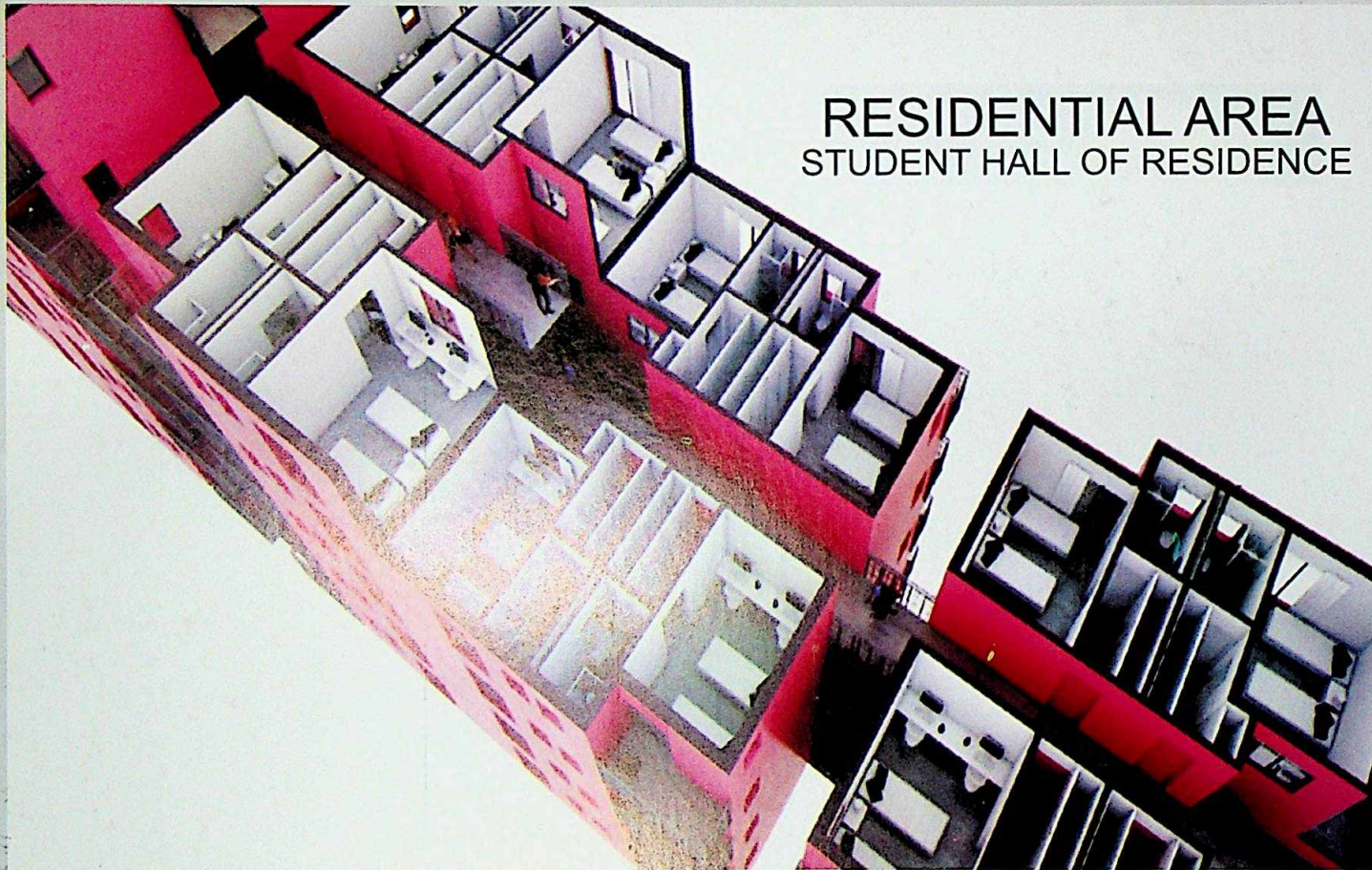
View of the main facade of a Student Hall of Residence



Exterior view of a Student Hall of Residence



Student Hall of Residence



## RESIDENTIAL AREA STUDENT HALL OF RESIDENCE

### INSTALLATIONS:

- Each Room: 1 wall mounted lighting, 2 ceiling light point, 3 sockets, 2 wall mounted network socket RJ45, 1 sprinkler, 1 smoke optical detector, hot water and cross-ventilation.

- General: CCTV, TV, sprinklers and fire hoses (fire protection system), fire alarm control, entry phone, internet, cross-ventilation, 4 vertical cores (with

Section on perspective of a Student Hall of Residence



View of the main facade of a Student Hall of Residence



View from the interior courtyard of a Student Hall of Residence



Interior view of the corridor of a Student Hall of Residence



Interior view of the courtyard of a Student Hall of Residence