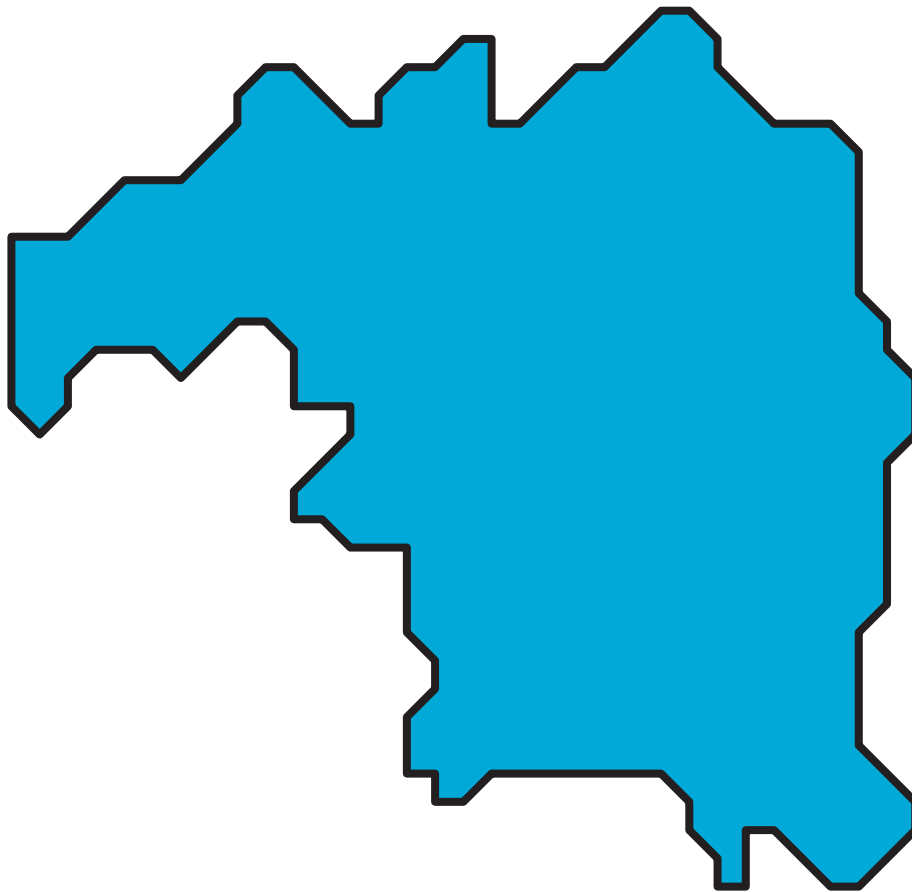




**MINISTRY OF EDUCATION
KADUNA STATE**

FEDERAL REPUBLIC OF NIGERIA

***ANNUAL SCHOOL CENSUS REPORT
2009 – 2010***



JUNE 2010

KADUNA STATE SCHOOL CENSUS REPORT 2009-2010

KADUNA State Ministry of Education

May 2010

Preface

The Kaduna State Ministry of Education is currently implementing the Education Sector Plan 2009-2020 to improve the quality of education in the State.

The 2009 – 2010 Annual School Census (ASC) is the result of decisions reached at 54th National Council on Education (NCE) meeting held at Katsina which urge States and FCT to finance and conduct the ASC. It is also one of the main tools of providing information to assess progress in the implementation of our Education Sector Plan using a set of monitoring indicators.

This analytical report, the first ever produced in the State, presents the findings of the 2009-2010 ASC. I am certain that the report will serve as an authentic source of information on the status of education in Kaduna State.

It is hoped that stakeholders will use the information provided for planning and decision making.

It is pertinent to note that the 2009 – 2010 ASC was financed jointly by the SMoE, the DFID-funded Education Sector Support Program In Nigeria (ESSPIN) and the World-Bank financed State Education Sector Project (SESP).

The Ministry is grateful to our development partner, ESSPIN, for the all important technical support given to education sub sector in the state.

I wish to congratulate the Education Management and Information System Unit of the Department of Planning, Research and Statistics in the SMoE, the sub-sector parastatals, and the education officials at all levels who contributed towards the implementation of the school census and the preparation of this report.

HC, July 2010

Table of contents

Preface	i
List of tables	iv
Definitions	vi
Abbreviations	vii
1 Background	1
2 School Lists and ASC Coverage	2
3 Students	5
4 Teachers	25
5 Facilities	35
Annex A Key Indicators (Efficiency Indicators)	48
Annex B Population projections	51
Annex C Additional Census Information	52

List of tables

Table 2.1	Number of schools	2
Table 2.2	Number of private schools by level	2
Table 2.3	Number of public schools, enrolment and teachers	3
Table 2.4	Number of public schools with special curriculum	3
Table 2.5	Selective characteristics of public schools (Percentages)	4
Table 2.6	Selective characteristics of public schools (Absolute Numbers)	4
Table 3.1	Enrolment in public pre-primary education by level, gender and LGEA	5
Table 3.2	Enrolment in private pre-primary education by level, gender and LGEA	6
Table 3.3	Public and private pre-primary school enrolment by gender and LGEA	7
Table 3.4	Enrolment in public primary schools by level, gender and LGEA	8
Table 3.5	Enrolment in private primary schools by level, gender and LGEA	10
Table 3.6	Public and private primary school enrolment by gender and LGEA	12
Table 3.7	Total Public and Private primary school enrolment by gender and LGEA	13
Table 3.8	Enrolment in public junior secondary schools by level, gender and LGEA	14
Table 3.9	Enrolment in private junior secondary schools by level, gender and LGEA	15
Table 3.10	Public and private junior secondary school enrolment by gender and LGEA	16
Table 3.11	Public and Private Junior secondary school enrolment by gender and LGEA	17
Table 3.12	Enrolment in public senior secondary schools by level, gender and LGEA	18
Table 3.13	Enrolment in private senior secondary schools by level, gender and LGEA	19
Table 3.14	Public and private senior secondary school enrolment by gender and LGEA	20
Table 3.15	Public and Private Senior secondary school enrolment by gender and LGEA	21
Table 3.16	Enrolment of special needs children in public primary schools	22
Table 3.17	Enrolment of special needs children in public secondary schools	22
Table 3.18	Repeaters in public primary schools by LGEA, class and gender	23
Table 3.19	Repeaters in public secondary schools by LGEA, class and gender	24
Table 4.1	Number of primary school teachers by gender and LGEA	25
Table 4.2	Pupil-teacher ratio by LGEA, public primary schools	26
Table 4.3	Number of public junior secondary school teachers by gender and LGEA	27
Table 4.4	Public Pupil-teacher ratio by type and LGEA, junior secondary schools	28
Table 4.5	Number of public senior secondary school teachers by gender and LGEA	29
Table 4.6	Pupil-teacher ratio by type and LGEA, public senior secondary schools	30
Table 4.7	Percentage of long-term absent teachers (Public Only)	31
Table 4.8	Percentage of teachers by highest level of education attained (Public Only)	31
Table 4.9	Percentage of teachers by source of salary (Public Only)	31
Table 4.10	Percentage of teachers who attended training seminar/workshop (Public Only)	31
Table 4.11	Number of private school teachers by gender and LGEA, (All Levels)	32
Table 5.1	Number of classrooms by school type and LGEA	35
Table 5.2	Pupil-classroom ratio by school type and LGEA	36
Graph 5	Kaduna: Percentage Classroom Functions by Level and Use by LGE	37
Graph 6	Kaduna: Primary Pupil Toilet Ratio (Ranked by LGEA) Lowest Best	38
Table 5.3	Selective characteristics of public Primary school facilities	39
Table 5.4	Selective characteristics of public Junior Secondary school facilities	40
Table 5.5	Selective characteristics of public Senior Secondary school facilities	41
Table 5.6	Main source of safe water in public primary schools, percentage of schools	42
Table 5.7	Main source of safe water in public Junior Secondary schools, percentage of schools	43
Table 5.8	Main source of safe water in public Senior Secondary schools, percentage of schools	44
Table 5.9	Toilets in public primary schools	45
Table 5.10	Toilets in public Junior Secondary schools	46
Table 5.11	Toilets in public Senior Secondary schools	47

A1. Transition Rate from Pry 6 to JSS 1	48
A2. Promotion rate by class and gender	49
A3. Repetition rate by class and gender	49
A4. Dropout rate by class and gender	50
A5. Survival rate by class and gender	50
B1. Population projections by LGEA, 2009	51
C1. LGEA Report Cards	52
C2. School Report Cards	52
C3. Annual Education Sector Review 2009/10	52
C4. Analysis Service	52
C5. School Lists	52

Definitions

Dropout rate by grade: Percentage of pupils from a cohort enrolled in a given grade at a given school year who are no longer enrolled in the following school year.

To measure the phenomenon of pupils from a cohort leaving school without completion, and its effect on the internal efficiency of educational systems. In addition, it is one of the key indicators for analysing and projecting pupil flows from grade to grade within the educational cycle.

Gross enrolment rate: Total enrolment in primary education, regardless of age, expressed as a percentage of the eligible official school-age population (6-11 years in Nigeria).

To show the general level of participation in primary education. It indicates the capacity of the education system to enrol students of that age group. It can also be a complementary indicator to net enrolment rate by indicating the extent of over-aged and under-aged enrolment.

Gross intake rate: Total number of new entrants in the first grade of primary education, regardless of age, expressed as a percentage of the population at the official primary school-entrance age (6 years in Nigeria).

To indicate the general level of access to primary education. It also indicates the capacity of the education system to provide access to grade 1 for the official school-entrance age population

Net enrolment rate: Enrolment of the official age group for primary education (6-11 years in Nigeria) expressed as a percentage of the corresponding population.

To show the extent of coverage in a given level of education of children and youths belonging to the official age group corresponding to the given level of education

Pupil-teacher ratio: Average number of pupils (students) per teacher at a specific level of education in a given school year.

To measure the level of human resources input in terms of the number of teachers in relation to the size of the pupil population. The results can be compared with established national norms on the number of pupils per teacher.

Repetition rate by grade: Percentage of pupils from a cohort enrolled in a given grade at a given school year who study in the same grade in the following school year.

To measure the rate at which pupils from a cohort repeat a grade, and its effect on the internal efficiency of educational systems. In addition, it is one of the key indicators for analysing and projecting pupil flows from grade to grade within the educational cycle.

Source: UNESCO Institute of Statistics, Education Indicators, Technical Guidelines, November 2009

Abbreviations

ASC	Annual School Census
EMIS	Education Management Information System
GER	Gross Enrolment Rate
NER	Net Enrolment Rate
SBMC	School-Based Management Committee
SMOE	State Ministry of Education
SUBEB	State Universal Basic Education Board

1. Background

The *Nigeria Educational Management Information System Policy*, which was approved by the 54th National Council on Education meeting in Katsina in December 2007, envisages the decentralisation of the system in 2009: “different states are now required to set up, staff and furnish education management information systems for their respective states”. The *Policy* document determines some coordination principles (in terms of organisations, operations and the transition period). These are further explained in the *Implementation Guidelines for the NEMIS Policy* that were disseminated in August 2009.

According to the *Policy*, the National EMIS Committee is responsible, among others, for:

- Ensuring that EMIS is operational and understood uniformly around the country
- Facilitating the sharing of technical information and practices regularly to all institutions that provide primary data for the management of education at any level
- Developing and monitoring compliance with EMIS policies and updating practice
- Clarifying information needs at all levels of the education system and encouraging the flow of data and the training of participants
- Evaluating the performance of the system and recommending actions

The National EMIS Committee convened in August of 2009 approved the ASC Operational Manual, which is based a census cycle that runs from August to July. The Operational Manual includes guidance for every ASC phase and a timeline. Based on the *Policy* and the *Guidelines*, the purpose of the *Operational Manual* is to:

- Guide States on how to plan the ASC to achieve the ultimate objective, which is the availability of timely and reliable data on which to base planning decisions
- Facilitate the exchange of information between States on what works and what does not work
- Explain how key aspects of the process will be coordinated and standardised between the States and the Federal level (questionnaires, technology, timeline, reporting)

The National EMIS Committee also approved a simplified ASC questionnaire (8 pages long for the public sector) and an even shorter for private schools (4 pages long). Mid-November was selected as the period for data collection.

The Kaduna State Full EMIS Committee convened in September of 2009. The Full EMIS Committee approved the ASC budget, the training schedule and the methodology of data collection, which included the use of district school supervisors and secondary school inspectors as enumerators, in order to improve the quality of the information. Training was also provided to data enterers and data analysts. The analysis of the ASC data was completed in June 2010.

The Kaduna State Ministry of Education (SMOE) in collaboration with the State Universal Basic Education Board (SUBEB) and the Education Resource Center (ERC), with the support of ESSPIN and SESP carried out the ASC in the 2009/2010 academic session.

The purpose of the school census is to provide yearly data to effectively monitor the state of the education sector and facilitate the use of information for planning and budgeting decisions.

The Kaduna State Ministry of Education has put great emphasis in ensuring that the results of the ASC are reported in a timely way to the public.

2. School Lists and ASC Coverage

A process of consolidation of the various school lists was launched in 2009. This process involved the LGEAs and parastatals in various iterations. These efforts resulted in a single school list comprehensive of all sectors (public and private) and levels (pre-primary and primary, JSS and SSS). However, after data collection several schools were captured that were not in the consolidated school list, while some schools in the list were not captured, at least not with the same name.

Hence, additional efforts are needed to elaborate a definitive list of schools. Table 2.1 provides the details of the number of schools captured by level.]

Table 2.1 Number of schools

Original school list	Public			Private
	Pre Primary and Primary *	Junior Secondary	Senior Secondary	
1A. Responded	3,558	229	231	136
1B. Did not respond **	320	23	28	312
1. Total	3,878	252	259	448
Response rate, original school list %	91.7	90.9	89.2	30.4
New schools				
2. Total	392	164	35	958
All schools				
1A+2. Responded	3,950	393	266	1,094
1B. Did not respond **	320	23	28	312
1A+1B+2. Total	4,270	416	294	1,406
Response rate, all schools (%)	92.5	94.5	90.5	77.8

Notes: School Lists for Private particularly poor

* Includes pre-primary/primary' primary and pre-primary only schools

** A number of the non responding schools may no longer exist and be due to inaccurate school lists

Table 2.2 Number of private schools by level

	Number of schools		Number of schools
Schools with pre-primary classes	602	Of which: Pre- Primary only	18
Schools with primary classes	955	Of which: Primary only	263
Schools with junior secondary classes	454	Of which: Junior secondary only	19
Schools with senior secondary classes	271	Of which: Senior secondary only	0

Table 2.3 Number of public schools, enrolment and teachers

Level	Number of schools	Number of pupils			Number of teachers		
		Male	Female	Total	Male	Female	Total
Pre-primary only	3	209	174	383	26	44	70
Pre-primary and primary	867	261,287	238,470	499,757	7,102	12,682	19,784
Primary only	3,080	320,941	243,413	564,354	13,455	5,628	19,084
Junior secondary *	393	102,167	73,488	175,655	2,462	4,200	6,662
Senior secondary *	266	70,100	42,353	112,453	4,139	1,816	5,955

Teacher Numbers Calculated from Teachers Table

* Includes teachers that teach at a different level e.g. JSS teachers who also teach at SSS. Approx 1,400 teachers teach at both levels

Table 2.4 Number of public schools with special curriculum

	Number of schools	Number of pupils			Number of teachers		
		Male	Female	Total	Male	Female	Total
Primary education							
Islamiyya Integrated	171	26,461	19,624	46,085	1,005	494	1,499
Nomadic	314	25,824	20,432	46,256	1,146	377	1,523
Junior secondary education							
Islamiyya Integrated	4	895	1,191	2,086	35	33	68
Senior secondary education							
Islamiyya Integrated	4	1,164	471	1,635	66	7	73
Science and Technical College	24	7,987	4,615	12,602	425	202	627

Table 2.5 Selective characteristics of public schools (Percentages)

Percentage of schools with:	Primary		Junior secondary		Senior secondary	
	Urban %	Rural %	Urban %	Rural %	Urban %	Rural %
Double shifts	37.0	1.9	24.7	3.7	23.8	6.0
Shared facilities	17.2	5.4	52.6	25.8	52.5	34.1
School Development Plan	60.7	56.1	77.3	56.4	70.0	63.7
School-Based Management Committee	88.2	82.3	90.7	76.5	66.3	63.7
Parent-Teacher Association	94.1	94.2	97.9	93.3	96.3	97.8
Multi-grade teaching	17.5	34.3				

Table 2.6 Selective characteristics of public schools (Absolute Numbers)

Number of schools with:	Primary		Junior Secondary		Senior Secondary	
	Urban	Rural	Urban	Rural	Urban	Rural
Double shifts	125	66	24	11	19	11
Shared facilities	58	191	51	77	42	62
School Development Plan	205	1,979	75	168	56	116
School-Based Management Committee	298	2,902	88	228	53	116
Parent-Teacher Association	318	3,323	95	278	77	178
Multi-grade teaching	59	1,211				

3. Students

Table 3.1 Enrolment in public pre-primary education by level, gender and LGEA

LGEA	Kindergarten			Nursery		
	Boys	Girls	Total	Boys	Girls	Total
BIRNIN GWARI	70	71	141	208	123	331
CHIKUN	29	28	57	2,008	2,104	4,112
GIWA	553	381	934	1,971	1,471	3,442
IGABI	-	-	-	3,144	2,718	5,862
IKARA	124	107	231	789	696	1,485
JABA	51	30	81	2,334	1,675	4,009
JEMA'A	288	321	609	2,776	2,519	5,295
KACHIA	54	41	95	1,486	1,521	3,007
KADUNA NORTH	610	567	1,177	1,449	1,444	2,893
KADUNA SOUTH	1,065	1,064	2,129	3,232	3,449	6,681
KAGARKO	304	333	637	405	418	823
KAJURU	17	18	35	737	717	1,454
KAURA	572	546	1,118	976	1,026	2,002
KAURU	81	91	172	222	228	450
KUBAU	96	96	192	2,026	1,657	3,683
KUDAN	747	762	1,509	1,170	890	2,060
LERE	344	296	640	856	1,005	1,861
MAKARFI	287	210	497	1,231	831	2,062
SABON GARI	1,174	1,106	2,280	2,370	2,331	4,701
SANGA	387	332	719	1,074	993	2,067
SOBA	122	130	252	1,759	1,532	3,291
ZANGON KATAF	203	192	395	2,159	2,071	4,230
ZARIA	114	89	203	2,441	2,490	4,931
Grand Total	7,292	6,811	14,103	36,823	33,909	70,732

Table 3.2 Enrolment in private pre-primary education by level, gender and LGEA

LGEA	Kindergarten			Nursery		
	Boys	Girls	Total	Boys	Girls	Total
BIRNIN GWARI	70	81	151	236	175	411
CHIKUN	1,443	1,382	2,825	5,384	5,055	10,439
GIWA	87	69	156	472	346	818
IGABI	409	382	791	1,111	1,002	2,113
IKARA	88	74	162	129	150	279
JABA	148	146	294	250	247	497
JEMA'A	404	367	771	1,568	1,394	2,962
KACHIA	1,023	1,151	2,174	1,277	1,097	2,374
KADUNA NORTH	1,528	1,407	2,935	5,460	5,271	10,731
KADUNA SOUTH	1,195	1,051	2,246	4,240	4,121	8,361
KAGARKO	136	148	284	526	496	1,022
KAJURU	101	85	186	487	353	840
KAURA	1,049	1,014	2,063	450	474	924
KAURU	75	104	179	467	513	980
KUBAU	180	162	342	755	761	1,516
KUDAN	38	33	71	28	40	68
LERE	79	62	141	1,775	1,497	3,272
MAKARFI	34	40	74	271	156	427
SABON GARI	1,066	1,113	2,179	2,508	2,336	4,844
SANGA	126	137	263	433	459	892
SOBA	7	11	18	90	104	194
ZANGON KATAF	146	107	253	644	580	1,224
ZARIA	1,161	1,003	2,164	3,372	3,326	6,698
Grand Total	10,593	10,129	20,722	31,933	29,953	61,886

Table 3.3 Public and private pre-primary school enrolment by gender and LGEA

LGEA	Public				Private				Total	
	Number of Schools	Pupils	Girls	% girls	Number of Schools	Pupils	Girls	% girls	Pupils	% girls
BIRNIN GWARI	4	472	194	41.1	7	562	256	45.6	1,034	43.5
CHIKUN	45	4,169	2,132	51.1	203	13,264	6,437	48.5	17,433	49.2
GIWA	34	4,376	1,852	42.3	14	974	415	42.6	5,350	42.4
IGABI	41	5,862	2,718	46.4	42	2,904	1,384	47.7	8,766	46.8
IKARA	17	1,716	803	46.8	8	441	224	50.8	2,157	47.6
JABA	44	4,090	1,705	41.7	12	791	393	49.7	4,881	43.0
JEMA'A	79	5,904	2,840	48.1	43	3,733	1,761	47.2	9,637	47.7
KACHIA	56	3,102	1,562	50.4	46	4,548	2,248	49.4	7,650	49.8
KADUNA NORTH	39	4,070	2,011	49.4	167	13,666	6,678	48.9	17,736	49.0
KADUNA SOUTH	33	8,810	4,513	51.2	109	10,607	5,172	48.8	19,417	49.9
KAGARKO	20	1,460	751	51.4	16	1,306	644	49.3	2,766	50.4
KAJURU	23	1,489	735	49.4	13	1,026	438	42.7	2,515	46.6
KAURA	68	3,120	1,572	50.4	19	2,987	1,488	49.8	6,107	50.1
KAURU	9	622	319	51.3	14	1,159	617	53.2	1,781	52.6
KUBAU	49	3,875	1,753	45.2	20	1,858	923	49.7	5,733	46.7
KUDAN	15	3,569	1,652	46.3	4	139	73	52.5	3,708	46.5
LERE	26	2,501	1,301	52.0	26	3,413	1,559	45.7	5,914	48.4
MAKARFI	18	2,559	1,041	40.7	9	501	196	39.1	3,060	40.4
SABON GARI	30	6,981	3,437	49.2	61	7,023	3,449	49.1	14,004	49.2
SANGA	35	2,786	1,325	47.6	13	1,155	596	51.6	3,941	48.7
SOBA	31	3,543	1,662	46.9	2	212	115	54.2	3,755	47.3
ZANGON KATAF	110	4,625	2,263	48.9	20	1,477	687	46.5	6,102	48.3
ZARIA	42	5,134	2,579	50.2	76	8,862	4,329	48.8	13,996	49.4
Grand Total	868 *	84,835	40,720	48.0	944	82,608	40,082	48.5	167,443	48.3

* Two schools 08/09 enrolment only

Table 3.4 Enrolment in public primary schools by level, gender and LGEA

LGEA	Class 1			Class 2			Class 3		
	Boys	Girls	Total	Boys	Girls	Total	Boys	Girls	Total
BIRNIN GWARI	6,423	4,021	10,444	4,960	2,990	7,950	4,988	2,976	7,964
CHIKUN	5,664	5,335	10,999	4,982	4,787	9,769	4,528	4,358	8,886
GIWA	7,375	4,462	11,837	6,063	3,918	9,981	5,050	3,287	8,337
IGABI	9,059	6,175	15,234	7,902	5,881	13,783	6,504	4,746	11,250
IKARA	4,640	3,442	8,082	4,378	3,112	7,490	3,888	2,618	6,506
JABA	4,687	2,183	6,870	3,076	2,020	5,096	3,031	2,064	5,095
JEMA'A	4,413	4,036	8,449	3,981	3,767	7,748	4,117	3,708	7,825
KACHIA	5,156	4,855	10,011	4,422	4,123	8,545	3,667	3,750	7,417
KADUNA NORTH	2,830	2,858	5,688	3,363	3,605	6,968	3,348	3,280	6,628
KADUNA SOUTH	2,835	2,638	5,473	2,994	3,090	6,084	3,408	3,487	6,895
KAGARKO	4,125	3,804	7,929	3,353	3,068	6,421	2,998	2,965	5,963
KAJURU	2,768	2,716	5,484	2,555	2,492	5,047	2,488	2,379	4,867
KAURA	1,278	1,297	2,575	1,179	1,309	2,488	1,167	1,220	2,387
KAURU	5,922	5,014	10,936	4,204	3,668	7,872	3,756	3,162	6,918
KUBAU	6,662	4,969	11,631	5,732	4,332	10,064	4,971	3,485	8,456
KUDAN	3,793	2,789	6,582	2,985	1,785	4,770	2,231	1,470	3,701
LERE	8,139	6,997	15,136	7,164	6,088	13,252	6,109	5,263	11,372
MAKARFI	4,087	2,864	6,951	3,430	2,354	5,784	3,056	2,137	5,193
SABON GARI	3,286	3,191	6,477	3,354	3,022	6,376	3,119	2,709	5,828
SANGA	4,827	4,448	9,275	4,463	4,111	8,574	4,265	3,871	8,136
SOBA	8,552	5,677	14,229	6,921	4,729	11,650	5,560	3,734	9,294
ZANGON KATAF	4,703	4,718	9,421	4,077	3,986	8,063	3,898	3,910	7,808
ZARIA	7,247	6,228	13,475	7,498	6,200	13,698	6,906	5,902	12,808
Grand Total	118,471	94,717	213,188	103,036	84,437	187,473	93,053	76,481	169,534

KADUNA State School Census Report 2009-2010

LGEA	Class 4			Class 5			Class 6		
	Boys	Girls	Total	Boys	Girls	Total	Boys	Girls	Total
BIRNIN GWARI	4,083	2,399	6,482	3,501	2,310	5,811	3,632	1,996	5,628
CHIKUN	4,253	4,078	8,331	3,585	3,568	7,153	3,071	3,211	6,282
GIWA	4,120	2,586	6,706	2,939	1,879	4,818	2,179	1,322	3,501
IGABI	5,811	4,097	9,908	5,245	3,583	8,828	4,442	2,818	7,260
IKARA	3,667	2,449	6,116	2,972	1,980	4,952	2,333	1,499	3,832
JABA	2,862	2,012	4,874	2,891	1,934	4,825	2,636	1,853	4,489
JEMA'A	3,914	3,664	7,578	3,564	3,301	6,865	3,270	2,959	6,229
KACHIA	3,568	3,378	6,946	3,230	2,852	6,082	2,605	2,399	5,004
KADUNA NORTH	3,042	3,290	6,332	3,178	3,262	6,440	2,668	2,747	5,415
KADUNA SOUTH	3,270	3,238	6,508	3,005	2,835	5,840	2,476	2,437	4,913
KAGARKO	2,757	2,612	5,369	2,457	2,317	4,774	2,238	1,985	4,223
KAJURU	2,452	2,291	4,743	2,171	2,162	4,333	1,964	1,851	3,815
KAURA	1,187	1,200	2,387	1,063	1,144	2,207	920	932	1,852
KAURU	3,461	2,959	6,420	3,137	2,691	5,828	2,777	2,213	4,990
KUBAU	3,757	2,632	6,389	3,166	2,196	5,362	2,293	1,537	3,830
KUDAN	1,962	1,260	3,222	1,678	1,064	2,742	1,480	791	2,271
LERE	5,777	4,921	10,698	5,117	4,174	9,291	4,147	3,370	7,517
MAKARFI	2,761	1,897	4,658	2,426	1,387	3,813	1,971	1,111	3,082
SABON GARI	2,950	2,768	5,718	2,511	2,526	5,037	2,139	1,923	4,062
SANGA	4,160	4,177	8,337	3,982	3,740	7,722	3,533	3,294	6,827
SOBA	4,225	2,536	6,761	3,699	1,992	5,691	2,720	1,529	4,249
ZANGON KATAF	3,538	3,570	7,108	3,242	3,084	6,326	2,688	2,526	5,214
ZARIA	6,134	5,190	11,324	5,522	4,697	10,219	5,688	4,743	10,431
Grand Total	83,711	69,204	152,915	74,281	60,678	134,959	63,870	51,046	114,916

Table 3.5 Enrolment in private primary schools by level, gender and LGEA

LGEA	Class 1			Class 2			Class 3		
	Boys	Girls	Total	Boys	Girls	Total	Boys	Girls	Total
BIRNIN GWARI	189	164	353	218	159	377	158	156	314
CHIKUN	2,392	2,320	4,712	2,184	2,290	4,474	2,204	2,229	4,433
GIWA	583	592	1,175	544	544	1,088	364	379	743
IGABI	756	781	1,537	769	712	1,481	661	600	1,261
IKARA	61	89	150	76	78	154	75	80	155
JABA	149	125	274	142	143	285	107	120	227
JEMA'A	682	665	1,347	665	586	1,251	595	612	1,207
KACHIA	1,066	1,130	2,196	896	938	1,834	926	822	1,748
KADUNA NORTH	2,562	2,598	5,160	2,324	2,516	4,840	2,263	2,288	4,551
KADUNA SOUTH	2,041	2,130	4,171	2,121	2,087	4,208	2,120	2,011	4,131
KAGARKO	222	191	413	193	174	367	155	147	302
KAJURU	187	163	350	204	167	371	176	128	304
KAURA	215	300	515	138	162	300	95	125	220
KAURU	534	549	1,083	488	587	1,075	317	489	806
KUBAU	357	265	622	254	177	431	186	128	314
KUDAN	17	26	43	20	19	39	20	11	31
LERE	636	567	1,203	475	477	952	528	420	948
MAKARFI	113	101	214	119	76	195	134	83	217
SABON GARI	1,442	1,322	2,764	3,182	1,204	4,386	1,350	1,275	2,625
SANGA	254	253	507	159	159	318	136	174	310
SOBA	15	15	30	13	21	34	13	8	21
ZANGON KATAF	381	341	722	315	301	616	319	286	605
ZARIA	1,753	1,694	3,447	1,744	1,615	3,359	1,654	1,516	3,170
Grand Total	16,607	16,381	32,988	17,243	15,192	32,435	14,556	14,087	28,643

KADUNA State School Census Report 2009-2010

LGEA	Class 4			Class 5			Class 6		
	Boys	Girls	Total	Boys	Girls	Total	Boys	Girls	Total
BIRNIN GWARI	115	102	217	89	74	163	45	35	80
CHIKUN	2,063	2,173	4,236	1,781	1,817	3,598	811	718	1,529
GIWA	205	190	395	165	120	285	89	61	150
IGABI	604	498	1,102	460	442	902	310	313	623
IKARA	52	49	101	40	52	92	36	26	62
JABA	100	78	178	51	53	104	34	34	68
JEMA'A	512	494	1,006	371	366	737	164	137	301
KACHIA	691	782	1,473	611	676	1,287	549	669	1,218
KADUNA NORTH	2,099	2,044	4,143	1,877	1,787	3,664	1,040	993	2,033
KADUNA SOUTH	1,991	1,907	3,898	1,753	1,694	3,447	926	890	1,816
KAGARKO	150	146	296	128	126	254	48	41	89
KAJURU	117	116	233	70	81	151	31	28	59
KAURA	53	107	160	53	95	148	41	75	116
KAURU	304	335	639	205	273	478	171	295	466
KUBAU	127	113	240	56	41	97	25	12	37
KUDAN	11	5	16	2	2	4	3	2	5
LERE	421	334	755	289	229	518	95	56	151
MAKARFI	87	65	152	32	27	59	3	5	8
SABON GARI	1,249	1,206	2,455	1,034	906	1,940	507	430	937
SANGA	126	118	244	66	66	132	29	31	60
SOBA	9	5	14	11	7	18	-	-	-
ZANGON KATAF	271	223	494	195	179	374	119	112	231
ZARIA	1,547	1,411	2,958	1,222	1,148	2,370	746	669	1,415
Grand Total	12,904	12,501	25,405	10,561	10,261	20,822	5,822	5,632	11,454

Table 3.6 Public and private primary school enrolment by gender and LGEA

LGEA	Public				Private				Total	
	Number of Schools	Pupils	Girls	% girls	Number of Schools	Pupils	Girls	% girls	Pupils	% girls
BIRNIN GWARI	182	44,279	16,692	37.7	8	1,392	594	42.7	45,671	37.8
CHIKUN	223	51,420	25,337	49.3	202	22,078	11,145	50.5	73,498	49.6
GIWA	198	45,180	17,454	38.6	22	3,164	1,522	48.1	48,344	39.3
IGABI	281	66,263	27,300	41.2	43	6,373	3,088	48.5	72,636	41.8
IKARA	137	36,978	15,100	40.8	8	781	392	50.2	37,759	41.0
JABA	100	31,249	12,066	38.6	12	1,004	502	50.0	32,253	39.0
JEMA'A	175	44,694	21,435	48.0	43	5,496	2,624	47.7	50,190	47.9
KACHIA	283	44,005	21,357	48.5	45	9,133	5,306	58.1	53,138	50.2
KADUNA NORTH	41	37,471	19,042	50.8	167	22,819	11,595	50.8	60,290	50.8
KADUNA SOUTH	36	35,713	17,725	49.6	111	20,478	10,070	49.2	56,191	49.5
KAGARKO	210	34,679	16,751	48.3	16	1,442	697	48.3	36,121	48.3
KAJURU	136	28,289	13,891	49.1	13	1,272	612	48.1	29,561	49.1
KAURA	102	13,896	7,102	51.1	17	1,297	755	58.2	15,193	51.7
KAURU	257	42,964	19,707	45.9	20	4,107	2,315	56.4	47,071	46.8
KUBAU	256	45,732	19,151	41.9	22	1,387	564	40.7	47,119	41.8
KUDAN	89	23,288	9,159	39.3	4	116	52	44.8	23,404	39.4
LERE	268	67,266	30,813	45.8	28	4,302	1,997	46.4	71,568	45.8
MAKARFI	117	29,481	11,750	39.9	9	730	307	42.1	30,211	39.9
SABON GARI	54	33,498	16,139	48.2	67	13,010	6,287	48.3	46,508	48.2
SANGA	193	48,871	23,641	48.4	13	1,313	654	49.8	50,184	48.4
SOBA	208	51,874	20,197	38.9	1	-	-	0.0	51,874	38.9
ZANGON KATAF	284	43,940	21,794	49.6	24	2,697	1,249	46.3	46,637	49.4
ZARIA	117	71,955	32,960	45.8	79	15,475	7,533	48.7	87,430	46.3
Grand Total	3,947	979,659	441,337	45.1	974	139,866	69,860	49.9	1,119,525	45.7

Table 3.7 Total Public and Private primary school enrolment by gender and LGEA

LGEA	Total			Aged 6-11		
	Pupils	Girls	% girls	Pupils	Girls	% girls
BIRNIN GWARI	45,671	17,286	37.8	41,638	15,852	38.1
CHIKUN	73,498	36,482	49.6	62,613	31,295	50.0
GIWA	48,344	18,976	39.3	44,463	17,489	39.3
IGABI	72,636	30,388	41.8	62,235	25,484	40.9
IKARA	37,759	15,492	41.0	33,385	13,982	41.9
JABA	32,253	12,568	39.0	30,436	12,012	39.5
JEMA'A	50,190	24,059	47.9	45,780	21,945	47.9
KACHIA	53,138	26,663	50.2	46,759	23,343	49.9
KADUNA NORTH	60,290	30,637	50.8	55,513	28,279	50.9
KADUNA SOUTH	56,191	27,795	49.5	51,778	25,670	49.6
KAGARKO	36,121	17,448	48.3	33,031	16,074	48.7
KAJURU	29,561	14,503	49.1	25,728	12,692	49.3
KAURA	15,193	7,857	51.7	13,539	6,974	51.5
KAURU	47,071	22,022	46.8	43,914	20,666	47.1
KUBAU	47,119	19,715	41.8	42,560	17,903	42.1
KUDAN	23,404	9,211	39.4	21,365	8,402	39.3
LERE	71,568	32,810	45.8	61,045	27,888	45.7
MAKARFI	30,211	12,057	39.9	26,217	10,610	40.5
SABON GARI	46,508	22,426	48.2	42,258	19,602	46.4
SANGA	50,184	24,295	48.4	41,801	20,369	48.7
SOBA	51,874	20,197	38.9	47,735	18,690	39.2
ZANGON KATAF	46,637	23,043	49.4	44,060	21,788	49.5
ZARIA	87,430	40,493	46.3	74,691	34,516	46.2
Grand Total	1,119,525	511,197	45.7	998,068	455,485	45.6

Graph 1 Kaduna: Public and Private Enrolment by Gender and Level

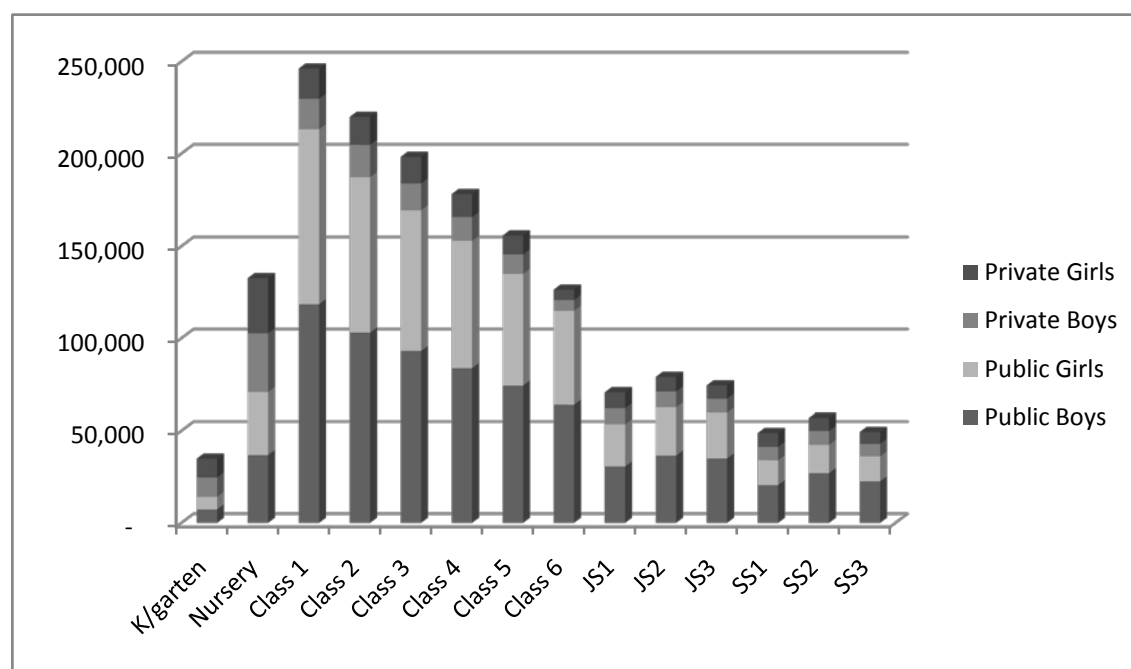


Table 3.8 Enrolment in public junior secondary schools by level, gender and LGEA

LGEA	JS1			JS2			JS3		
	Boys	Girls	Total	Boys	Girls	Total	Boys	Girls	Total
BIRNIN GWARI	1,191	838	2,029	1,264	748	2,012	1,145	646	1,791
CHIKUN	1,723	1,749	3,472	1,864	1,688	3,552	1,718	1,586	3,304
GIWA	1,137	550	1,687	1,068	480	1,548	995	363	1,358
IGABI	2,591	1,380	3,971	2,521	1,303	3,824	2,766	1,333	4,099
IKARA	815	347	1,162	1,157	376	1,533	917	335	1,252
JABA	635	598	1,233	589	863	1,452	653	748	1,401
JEMA'A	1,077	1,165	2,242	1,255	1,189	2,444	1,263	1,169	2,432
KACHIA	1,222	900	2,122	1,481	1,092	2,573	1,308	906	2,214
KADUNA NORTH	1,951	2,397	4,348	2,320	2,897	5,217	2,166	2,841	5,007
KADUNA SOUTH	1,213	1,144	2,357	1,537	1,302	2,839	1,591	1,409	3,000
KAGARKO	1,310	920	2,230	1,587	1,208	2,795	1,456	1,100	2,556
KAJURU	875	545	1,420	1,368	822	2,190	1,089	651	1,740
KAURA	849	807	1,656	1,052	765	1,817	968	785	1,753
KAURU	1,267	864	2,131	1,649	925	2,574	1,724	868	2,592
KUBAU	679	368	1,047	764	350	1,114	671	268	939
KUDAN	357	138	495	712	229	941	764	157	921
LERE	2,238	1,498	3,736	2,647	1,386	4,033	2,588	1,387	3,975
MAKARFI	908	354	1,262	980	372	1,352	1,009	330	1,339
SABON GARI	1,834	1,421	3,255	1,871	1,990	3,861	1,939	1,941	3,880
SANGA	2,114	1,744	3,858	1,950	1,665	3,615	1,895	1,548	3,443
SOBA	1,251	340	1,591	1,072	248	1,320	1,002	246	1,248
ZANGON KATAF	1,222	1,316	2,538	1,688	1,632	3,320	1,623	1,487	3,110
ZARIA	2,176	1,474	3,650	4,159	2,415	6,574	3,727	2,582	6,309
Grand Total	30,635	22,857	53,492	36,555	25,945	62,500	34,977	24,686	59,663

Table 3.9 Enrolment in private junior secondary schools by level, gender and LGEA

LGEA	JS1			JS2			JS3		
	Boys	Girls	Total	Boys	Girls	Total	Boys	Girls	Total
BIRNIN GWARI	-	-	-	-	-	-	-	-	-
CHIKUN	1,850	1,920	3,770	1,677	1,630	3,307	1,547	1,633	3,180
GIWA	267	65	332	296	54	350	199	52	251
IGABI	260	279	539	299	276	575	241	221	462
IKARA	2	2	4	8	2	10	-	-	-
JABA	53	112	165	38	95	133	26	91	117
JEMA'A	318	300	618	260	275	535	213	200	413
KACHIA	187	497	684	177	53	230	117	65	182
KADUNA NORTH	1,464	1,426	2,890	1,406	1,335	2,741	1,316	1,202	2,518
KADUNA SOUTH	1,646	1,649	3,295	1,654	1,679	3,333	1,560	1,501	3,061
KAGARKO	95	67	162	70	41	111	44	33	77
KAJURU	25	18	43	12	21	33	14	19	33
KAURA	-	-	-	-	-	-	-	-	-
KAURU	9	46	55	17	58	75	-	49	49
KUBAU	62	63	125	32	49	81	51	32	83
KUDAN	-	-	-	-	-	-	-	-	-
LERE	174	139	313	161	130	291	172	150	322
MAKARFI	18	21	39	21	18	39	7	5	12
SABON GARI	791	805	1,596	940	904	1,844	803	845	1,648
SANGA	143	113	256	111	106	217	105	140	245
SOBA	-	-	-	-	-	-	-	-	-
ZANGON KATAF	200	106	306	210	87	297	136	82	218
ZARIA	931	950	1,881	1,139	1,068	2,207	937	879	1,816
Grand Total	8,495	8,578	17,073	8,528	7,881	16,409	7,488	7,199	14,687

Table 3.10 Public and private junior secondary school enrolment by gender and LGEA

LGEA	Public				Private				Total Pupils	% Girls
	Schools	Pupils	Girls	% girls	Schools	Pupils	Girls	% girls		
BIRNIN GWARI	18	5,832	2,232	38.3%	1	-	-	N/A	5,832	38.3
CHIKUN	18	10,328	5,023	48.6%	116	10,257	5,183	50.5%	20,585	49.6
GIWA	14	4,593	1,393	30.3%	8	933	171	18.3%	5,526	28.3
IGABI	24	11,894	4,016	33.8%	19	1,576	776	49.2%	13,470	35.6
IKARA	13	3,947	1,058	26.8%	1	14	4	28.6%	3,961	26.8
JABA	14	4,086	2,209	54.1%	4	415	298	71.8%	4,501	55.7
JEMA'A	20	7,118	3,523	49.5%	16	1,566	775	49.5%	8,684	49.5
KACHIA	30	6,909	2,898	41.9%	11	1,096	615	56.1%	8,005	43.9
KADUNA NORTH	18	14,572	8,135	55.8%	79	8,149	3,963	48.6%	22,721	53.2
KADUNA SOUTH	10	8,196	3,855	47.0%	78	9,689	4,829	49.8%	17,885	48.6
KAGARKO	21	7,581	3,228	42.6%	7	350	141	40.3%	7,931	42.5
KAJURU	14	5,350	2,018	37.7%	5	109	58	53.2%	5,459	38.0
KAURA	12	5,226	2,357	45.1%	-	-	-	N/A	5,226	45.1
KAURU	18	7,297	2,657	36.4%	4	179	153	85.5%	7,476	37.6
KUBAU	10	3,100	986	31.8%	4	289	144	49.8%	3,389	33.3
KUDAN	5	2,357	524	22.2%	1	-	-	N/A	2,357	22.2
LERE	25	11,744	4,271	36.4%	6	926	419	45.2%	12,670	37.0
MAKARFI	11	3,953	1,056	26.7%	3	90	44	48.9%	4,043	27.2
SABON GARI	13	10,996	5,352	48.7%	44	5,088	2,554	50.2%	16,084	49.2
SANGA	15	10,916	4,957	45.4%	7	718	359	50.0%	11,634	45.7
SOBA	13	4,159	834	20.1%	-	-	-	N/A	4,159	20.1
ZANGON KATAF	42	8,968	4,435	49.5%	6	821	275	33.5%	9,789	48.1
ZARIA	21	16,533	6,471	39.1%	34	5,904	2,897	49.1%	22,437	41.8
Grand Total	399	175,655	73,488	41.8%	454	48,169	23,658	49.1%	223,824	43.4

Table 3.11 Public and Private Junior secondary school enrolment by gender and LGEA

LGEA	Total			Aged 12-14		
	Pupils	Girls	% girls	Total	Female	% female
BIRNIN GWARI	5,832	2,232	38.3	4,889	2,088	42.7
CHIKUN	20,585	10,206	49.6	17,280	8,713	50.4
GIWA	5,526	1,564	28.3	3,958	1,211	30.6
IGABI	13,470	4,792	35.6	11,003	3,903	35.5
IKARA	3,961	1,062	26.8	3,151	806	25.6
JABA	4,501	2,507	55.7	3,824	2,208	57.7
JEMA'A	8,684	4,298	49.5	6,555	3,328	50.8
KACHIA	8,005	3,513	43.9	6,007	2,866	47.7
KADUNA NORTH	22,721	12,098	53.2	18,397	10,754	58.5
KADUNA SOUTH	17,885	8,684	48.6	15,701	7,612	48.5
KAGARKO	7,931	3,369	42.5	5,769	2,473	42.9
KAJURU	5,459	2,076	38.0	3,500	1,329	38.0
KAURA	5,226	2,357	45.1	2,583	1,961	75.9
KAURU	7,476	2,810	37.6	6,196	2,406	38.8
KUBAU	3,389	1,130	33.3	2,888	865	30.0
KUDAN	2,357	524	22.2	1,358	239	17.6
LERE	12,670	4,690	37.0	9,977	3,686	36.9
MAKARFI	4,043	1,100	27.2	3,195	839	26.3
SABON GARI	16,084	7,906	49.2	14,010	6,762	48.3
SANGA	11,634	5,316	45.7	9,548	4,442	46.5
SOBA	4,159	834	20.1	2,888	512	17.7
ZANGON KATAF	9,789	4,710	48.1	8,041	3,882	48.3
ZARIA	22,437	9,368	41.8	18,209	7,102	39.0
Grand Total	223,824	97,146	43.4	173,761	79,987	46.0

Table 3.12 Enrolment in public senior secondary schools by level, gender and LGEA

LGEA	SS1			SS2			SS3		
	Boys	Girls	Total	Boys	Girls	Total	Boys	Girls	Total
BIRNIN GWARI	395	37	432	476	102	578	459	130	589
CHIKUN	1,148	956	2,104	1,142	855	1,997	730	643	1,373
GIWA	566	270	836	358	247	605	321	241	562
IGABI	1,949	634	2,583	1,432	536	1,968	1,330	479	1,809
IKARA	762	159	921	789	199	988	632	171	803
JABA	475	732	1,207	479	675	1,154	453	542	995
JEMA'A	1,404	1,007	2,411	1,422	1,045	2,467	1,697	1,072	2,769
KABAU	743	423	1,166	809	431	1,240	752	338	1,090
KACHIA	676	451	1,127	1,057	649	1,706	1,035	670	1,705
KADUNA NORTH	1,369	1,381	2,750	1,872	1,740	3,612	1,903	1,186	3,089
KADUNA SOUTH	630	796	1,426	469	835	1,304	409	698	1,107
KAGARKO	924	542	1,466	1,363	733	2,096	1,398	786	2,184
KAJURU	582	159	741	1,370	478	1,848	601	274	875
KAURA	992	674	1,666	1,119	698	1,817	971	526	1,497
KAURU	536	233	769	2,850	345	3,195	709	485	1,194
KUDAN	214	40	254	430	62	492	414	76	490
LERE	958	465	1,423	1,444	560	2,004	1,369	525	1,894
MAKARFI	701	247	948	662	226	888	791	181	972
SABON GARI	1,325	1,189	2,514	1,579	1,400	2,979	1,275	1,281	2,556
SANGA	1,111	948	2,059	1,151	890	2,041	1,002	741	1,743
SOBA	690	563	1,253	878	440	1,318	718	422	1,140
ZANGON KATAF	806	993	1,799	1,079	1,127	2,206	1,097	1,033	2,130
ZARIA	1,567	574	2,141	2,804	1,037	3,841	2,477	1,070	3,547
Grand Total	20,523	13,473	33,996	27,034	15,310	42,344	22,543	13,570	36,113

Table 3.13 Enrolment in private senior secondary schools by level, gender and LGEA

LGEA	SS1			SS2			SS3		
	Boys	Girls	Total	Boys	Girls	Total	Boys	Girls	Total
BIRNIN GWARI	-	-	-	-	-	-	-	-	-
CHIKUN	1,643	1,746	3,389	1,506	1,680	3,186	1,291	1,398	2,689
GIWA	172	63	235	168	19	187	172	16	188
IGABI	272	236	508	259	238	497	214	162	376
IKARA	-	-	-	-	-	-	-	-	-
JABA	30	104	134	37	82	119	30	71	101
JEMA'A	237	238	475	232	221	453	151	161	312
KACHIA	114	40	154	107	35	142	61	28	89
KADUNA NORTH	1,369	1,209	2,578	1,314	1,118	2,432	1,029	965	1,994
KADUNA SOUTH	1,542	2,141	3,683	1,835	1,569	3,404	1,947	1,882	3,829
KAGARKO	20	19	39	22	13	35	22	16	38
KAJURU	4	5	9	-	-	-	-	-	-
KAURA	-	-	-	-	-	-	-	-	-
KAURU	4	41	45	-	35	35	-	35	35
KUBAU	-	-	-	-	-	-	-	-	-
KUDAN	-	-	-	-	-	-	-	-	-
LERE	100	134	234	138	183	321	91	158	249
MAKARFI	-	-	-	-	-	-	-	-	-
SABON GARI	873	777	1,650	1,010	916	1,926	919	796	1,715
SANGA	112	143	255	105	93	198	68	116	184
SOBA	-	-	-	-	-	-	-	-	-
ZANGON KATAF	199	115	314	142	75	217	136	59	195
ZARIA	548	507	1,055	721	664	1,385	666	557	1,223
Grand Total	7,239	7,518	14,757	7,596	6,941	14,537	6,797	6,420	13,217

Table 3.14 Public and private senior secondary school enrolment by gender and LGEA

LGEA	Public				Private				Total	
	Number of Schools	Pupils	Girls	% girls	Number of Schools	Pupils	Girls	% girls	Pupils	% girls
BIRNIN GWARI	7	1,599	269	16.8	-	-	-	N/A	1,599	16.8
CHIKUN	13	5,474	2,454	44.8	75	9,264	4,440	47.9	14,738	46.8
GIWA	6	2,003	758	37.8	3	610	512	83.9	2,613	48.6
IGABI	13	6,360	1,649	25.9	12	1,381	745	53.9	7,741	30.9
IKARA	8	2,712	529	19.5	-	-	-	N/A	2,712	19.5
JABA	11	3,356	1,949	58.1	2	354	97	27.4	3,710	55.1
JEMA'A	18	7,647	3,124	40.9	8	1,240	620	50.0	8,887	42.1
KACHIA	8	3,496	1,192	34.1	5	385	282	73.2	3,881	38.0
KADUNA NORTH	17	4,538	1,770	39.0	47	7,004	3,712	53.0	11,542	47.5
KADUNA SOUTH	13	9,451	4,307	45.6	50	10,916	5,324	48.8	20,367	47.3
KAGARKO	7	3,837	2,329	60.7	2	112	64	57.1	3,949	60.6
KAJURU	12	5,746	2,061	35.9	1	9	4	44.4	5,755	35.9
KAURA	8	3,464	911	26.3	-	-	-	N/A	3,464	26.3
KAURU	11	4,980	1,898	38.1	2	115	4	3.5	5,095	37.3
KUBAU	13	5,158	1,063	20.6	-	-	-	N/A	5,158	20.6
KUDAN	3	1,236	178	14.4	-	-	-	N/A	1,236	14.4
LERE	15	5,321	1,550	29.1	4	804	329	40.9	6,125	30.7
MAKARFI	5	2,808	654	23.3	-	-	-	N/A	2,808	23.3
SABON GARI	11	8,049	3,870	48.1	32	5,291	2,802	53.0	13,340	50.0
SANGA	11	5,843	2,579	44.1	5	637	285	44.7	6,480	44.2
SOBA	6	3,711	1,425	38.4	-	-	-	N/A	3,711	38.4
ZANGON KATAF	32	6,135	3,153	51.4	4	726	477	65.7	6,861	52.9
ZARIA	14	9,529	2,681	28.1	19	3,663	1,935	52.8	13,192	35.0
Grand Total	262	112,453	42,353	37.7	271	42,511	21,632	50.9	154,964	41.3

Table 3.15 Public and Private Senior secondary school enrolment by gender and LGEA

LGEA	Total			Aged 15-17		
	Pupils	Girls	% girls	Total	Female	% girls
BIRNIN GWARI	1,599	269	16.8	1,338	173	12.9
CHIKUN	14,738	6,894	46.8	12,822	6,242	48.7
GIWA	2,613	1,270	48.6	2,002	1,018	50.8
IGABI	7,741	2,394	30.9	5,412	1,755	32.4
IKARA	2,712	529	19.5	1,946	445	22.9
JABA	3,710	2,046	55.1	3,283	1,839	56.0
JEMA'A	8,887	3,744	42.1	5,231	2,255	43.1
KABAU	3,881	1,474	38.0	2,867	1,076	37.5
KACHIA	11,542	5,482	47.5	8,834	4,334	49.1
KADUNA NORTH	20,367	9,631	47.3	18,394	9,261	50.3
KADUNA SOUTH	3,949	2,393	60.6	3,736	2,334	62.5
KAGARKO	5,755	2,065	35.9	4,531	1,612	35.6
KAJURU	3,464	911	26.3	2,801	727	26.0
KAURA	5,095	1,902	37.3	3,362	1,286	38.3
KAURU	5,158	1,063	20.6	3,956	602	15.2
KUDAN	1,236	178	14.4	1,103	111	10.1
LERE	6,125	1,879	30.7	4,301	1,458	33.9
MAKARFI	2,808	654	23.3	2,000	405	20.3
SABON GARI	13,340	6,672	50.0	9,668	6,071	62.8
SANGA	6,480	2,864	44.2	5,136	2,248	43.8
SOBA	3,711	1,425	38.4	2,586	720	27.8
ZANGON KATAF	6,861	3,630	52.9	5,115	2,877	56.2
ZARIA	13,192	4,616	35.0	11,054	4,152	37.6
Grand Total	154,964	63,985	41.3	121,478	53,001	43.6

Table 3.16 Enrolment of special needs children in public primary schools

Type of disability	Class 1	Class 2	Class 3	Class 4	Class 5	Class 6
Blind / visually impaired	27	32	32	18	16	49
Physically challenged	98	78	47	47	31	26
Hearing / speech impaired	45	43	34	27	36	18
Mentally challenged	39	24	15	10	9	6
TOTAL *	209	177	128	102	92	99

Notes* Totals may include same student more than once if student has multiple disabilities

Table 3.17 Enrolment of special needs children in public secondary schools

Type of disability	JSS 1	JSS 2	JSS 3	SSS 1	SSS 2	SSS 3
Blind / visually impaired	43	27	22	10	18	27
Physically challenged	104	188	149	62	70	68
Hearing / speech impaired	98	131	48	10	12	6
Mentally challenged	16	35	19	12	7	13
TOTAL *	261	381	238	94	107	114

Notes* Totals may include same student more than once if student has multiple disabilities

Table 3.18 Repeaters in public primary schools by LGEA, class and gender

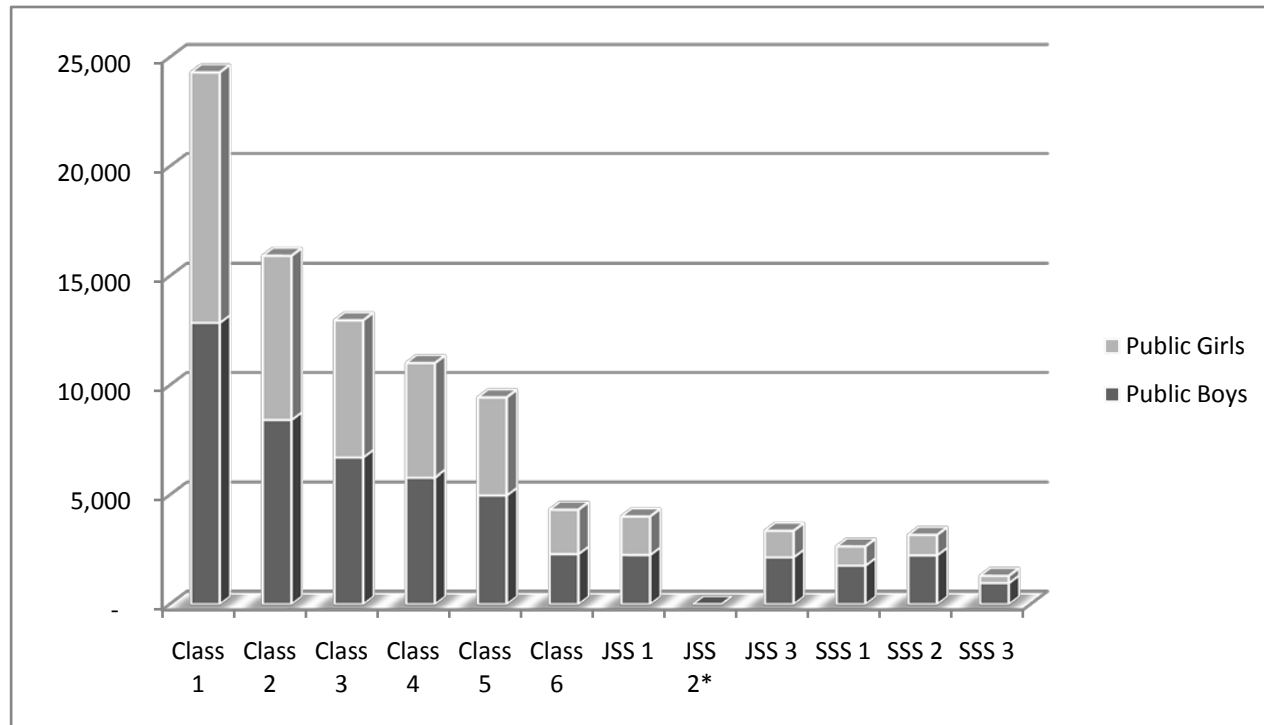
LGEA	Class 1		Class 2		Class 3		Class 4		Class 5		Class 6	
	Boys	Girls	Boys	Girls	Boys	Girls	Boys	Girls	Boys	Girls	Boys	Girls
BIRNIN GWARI	677	449	564	377	413	343	297	251	308	242	118	124
CHIKUN	646	535	405	382	324	300	256	235	232	195	80	73
GIWA	678	537	478	336	309	232	198	178	215	142	81	42
IGABI	985	861	499	418	407	325	340	268	314	240	137	114
IKARA	298	230	301	266	212	212	205	175	198	202	134	120
JABA	13	-	-	-	-	-	-	-	-	-	-	-
JEMA'A	439	458	326	334	290	275	265	290	225	210	76	72
KACHIA	838	859	469	497	420	446	391	413	290	311	151	158
KADUNA NORTH	248	219	169	150	105	104	129	133	106	88	70	76
KADUNA SOUTH	364	501	425	492	341	386	389	356	344	316	154	149
KAGARKO	570	649	362	364	332	368	297	316	246	250	135	129
KAJURU	264	294	223	195	185	205	144	147	144	152	48	37
KAURA	255	229	240	206	202	163	188	180	141	137	40	31
KAURU	455	463	317	401	303	228	215	210	193	190	73	77
KUBAU	552	428	391	313	287	280	227	152	152	151	58	44
KUDAN	644	492	337	192	210	188	202	137	140	96	30	33
LERE	1,346	1,171	869	678	751	682	646	526	547	474	313	257
MAKARFI	564	482	334	282	237	240	226	211	140	119	67	56
SABON GARI	397	317	182	178	178	172	139	133	117	110	92	88
SANGA	374	400	354	371	288	304	315	254	287	280	151	159
SOBA	893	644	407	340	264	200	168	101	101	70	71	29
ZANGON KATAF	539	547	394	399	365	352	334	342	296	310	69	64
ZARIA	826	683	368	351	274	278	225	219	247	181	149	101
Grand Total	12,865	11,448	8,414	7,522	6,697	6,283	5,796	5,227	4,983	4,466	2,297	2,033

Table 3.19 Repeaters in public secondary schools by LGEA, class and gender

LGEA	JSS 1		JSS 2		JSS 3		SSS 1		SSS 2		SSS 3	
	Boys	Girls	Boys	Girls	Boys	Girls	Boys	Girls	Boys	Girls	Boys	Girls
BIRNIN GWARI	43	7	-	-	15	59	64	10	51	10	2	-
CHIKUN	130	133	-	-	220	264	85	79	48	34	58	50
GIWA	30	7	-	-	15	5	25	10	6	2	2	-
IGABI	101	33	-	-	100	51	82	22	73	14	47	15
IKARA	24	11	-	-	21	6	127	10	52	9	10	4
JABA	16	14	-	-	1	-	46	91	9	39	1	3
JEMA'A	119	132	-	-	178	155	146	135	82	39	7	7
KACHIA	57	32	-	-	13	9	27	8	55	43	81	14
KADUNA NORTH	204	460	-	-	58	48	40	23	103	67	18	7
KADUNA SOUTH	300	81	-	-	417	32	124	50	293	95	-	28
KAGARKO	32	34	-	-	51	54	-	23	85	27	7	-
KAJURU	81	59	-	-	48	42	102	48	114	50	70	55
KAURA	91	34	-	-	15	10	20	7	166	144	6	3
KAURU	77	56	-	-	28	19	348	51	370	61	241	2
KUBAU	4	3	-	-	8	5	50	27	75	27	9	3
KUDAN	6	1	-	-	15	23	-	-	9	3	15	6
LERE	99	67	-	-	91	47	56	27	151	60	92	29
MAKARFI	347	154	-	-	445	113	29	14	22	6	21	8
SABON GARI	36	39	-	-	18	47	44	25	147	50	111	26
SANGA	169	160	-	-	119	130	55	39	40	32	5	5
SOBA	23	12	-	-	158	10	-	-	60	-	44	-
ZANGON KATAF	145	191	-	-	16	23	143	143	93	116	31	40
ZARIA	123	45	-	-	99	63	155	38	137	8	91	26
Grand Total	2,257	1,765	-	-	2,149	1,215	1,768	880	2,241	936	969	331

* Programming error resulted in JSS2 repeater data not being captured in this State

Graph2 Kaduna: Public Repeaters by Gender and Grade



4. Teachers

Table 4.1 Number of primary school teachers by gender and LGEA

LGEA	All teachers				Public Qualified teachers		
	Male	Female	Total	% Female	Total	% Qualified	% Female
BIRNIN GWARI	686	385	1,071	35.9	553	51.6	38.3
CHIKUN	868	1,504	2,372	63.4	1,361	57.4	69.2
GIWA	883	335	1,218	27.5	684	56.2	35.5
IGABI	1,272	1,067	2,339	45.6	981	41.9	52.7
IKARA	1,003	164	1,167	14.1	483	41.4	14.5
JABA	500	619	1,119	55.3	591	52.8	54.5
JEMA'A	1,018	1,187	2,205	53.8	1,430	64.9	52.8
KACHIA	996	764	1,760	43.4	827	47.0	45.2
KADUNA NORTH	575	1,937	2,512	77.1	1,516	60.4	82.3
KADUNA SOUTH	569	2,064	2,633	78.4	1,681	63.8	79.2
KAGARKO	734	532	1,266	42.0	632	49.9	40.0
KAJURU	738	792	1,530	51.8	924	60.4	49.4
KAURA	1,008	458	1,466	31.2	969	66.1	30.0
KAURU	817	463	1,280	36.2	498	38.9	40.4
KUBAU	1,463	491	1,954	25.1	398	20.4	24.6
KUDAN	817	296	1,113	26.6	658	59.1	31.6
LERE	1,438	862	2,300	37.5	972	42.3	37.7
MAKARFI	1,160	273	1,433	19.1	502	35.0	23.1
SABON GARI	485	816	1,301	62.7	1,064	81.8	66.5
SANGA	951	540	1,491	36.2	713	47.8	33.4
SOBA	1,029	601	1,630	36.9	661	40.6	37.4
ZANGON KATAF	919	1,150	2,069	55.6	1,374	66.4	54.4
ZARIA	712	1,113	1,825	61.0	1,479	81.0	62.3
Grand Total	20,641	18,413	39,054	47.1	20,951	53.6	51.9

Excludes teachers teaching pre-primary only

Qualified to exclude Grade 2 in line with Federal Policy

Table 4.2 Pupil-teacher ratio by LGEA, public primary schools

LGEA	Public	
	All teachers	Qualified teachers
BIRNIN GWARI	41	80
CHIKUN	22	38
GIWA	37	66
IGABI	28	68
IKARA	32	77
JABA	28	53
JEMA'A	20	31
KACHIA	25	53
KADUNA NORTH	15	25
KADUNA SOUTH	14	21
KAGARKO	27	55
KAJURU	18	31
KAURA	9	14
KAURU	34	86
KUBAU	23	115
KUDAN	21	35
LERE	29	69
MAKARFI	21	59
SABON GARI	26	31
SANGA	33	69
SOBA	32	78
ZANGON KATAF	21	32
ZARIA	39	49
Grand Total	25	47

Excludes teachers teaching pre-primary only

Qualified to exclude Grade 2 in line with Federal Policy

Table 4.3 Number of public junior secondary school teachers by gender and LGEA

LGEA	All teachers				Public Qualified teachers		
	Male	Female	Total	% Female	Total	% Qualified	% Female
BIRNIN GWARI	126	11	137	8.0	120	87.6	7.5
CHIKUN	105	212	317	66.9	286	90.2	68.2
GIWA	130	29	159	18.2	116	73.0	18.1
IGABI	211	81	292	27.7	230	78.8	23.5
IKARA	89	6	95	6.3	85	89.5	5.9
JABA	134	69	203	34.0	192	94.6	35.4
JEMA'A	232	150	382	39.3	352	92.1	40.1
KACHIA	191	57	248	23.0	222	89.5	24.3
KADUNA NORTH	246	414	660	62.7	567	85.9	64.6
KADUNA SOUTH	107	212	319	66.5	298	93.4	67.4
KAGARKO	171	57	228	25.0	206	90.4	25.7
KAJURU	117	93	210	44.3	206	98.1	44.7
KAURA	112	15	127	11.8	120	94.5	12.5
KAURU	73	31	104	29.8	87	83.7	28.7
KUBAU	69	4	73	5.5	65	89.0	6.2
KUDAN	52	16	68	23.5	43	63.2	23.3
LERE	196	49	245	20.0	233	95.1	19.3
MAKARFI	123	17	140	12.1	91	65.0	11.0
SABON GARI	186	183	369	49.6	342	92.7	51.8
SANGA	144	39	183	21.3	163	89.1	19.6
SOBA	141	13	154	8.4	122	79.2	8.2
ZANGON KATAF	329	136	465	29.2	436	93.8	29.4
ZARIA	360	369	729	50.6	626	85.9	54.2
Grand Total	3,644	2,263	5,907	38.3	5,208	88.2	39.4

Qualified to exclude Grade 2 in line with Federal Policy

Table 4.4 Public Pupil-teacher ratio by type and LGEA, junior secondary schools

LGEA	Public	
	All teachers	Qualified teachers
BIRNIN GWARI	43	49
CHIKUN	33	36
GIWA	29	40
IGABI	41	52
IKARA	42	46
JABA	20	21
JEMA'A	19	20
KACHIA	28	31
KADUNA NORTH	22	26
KADUNA SOUTH	26	28
KAGARKO	33	37
KAJURU	25	26
KAURA	41	44
KAURU	70	84
KUBAU	42	48
KUDAN	35	55
LERE	48	50
MAKARFI	28	43
SABON GARI	30	32
SANGA	60	67
SOBA	27	34
ZANGON KATAF	19	21
ZARIA	23	26
Grand Total	30	34

Qualified to exclude Grade 2 in line with Federal Policy

Table 4.5 Number of public senior secondary school teachers by gender and LGEA

LGEA	All teachers				Public Qualified teachers		
	Male	Female	Total	% Female	Total	% Qualified	% Female
BIRNIN GWARI	64	4	68	5.9	48	70.6	8.3
CHIKUN	110	138	248	55.6	222	89.5	56.8
GIWA	70	17	87	19.5	58	66.7	20.7
IGABI	174	95	269	35.3	196	72.9	28.1
IKARA	92	3	95	3.2	79	83.2	3.8
JABA	180	55	235	23.4	203	86.4	25.1
JEMA'A	305	130	435	29.9	387	89.0	30.7
KACHIA	166	43	209	20.6	186	89.0	22.0
KADUNA NORTH	266	302	568	53.2	482	84.9	54.4
KADUNA SOUTH	119	147	266	55.3	226	85.0	57.1
KAGARKO	142	35	177	19.8	168	94.9	20.2
KAJURU	166	64	230	27.8	219	95.2	27.4
KAURA	134	12	146	8.2	138	94.5	8.7
KAURU	116	25	141	17.7	121	85.8	16.5
KUBAU	115	6	121	5.0	108	89.3	4.6
KUDAN	39	10	49	20.4	30	61.2	16.7
LERE	155	24	179	13.4	171	95.5	13.5
MAKARFI	93	8	101	7.9	61	60.4	6.6
SABON GARI	196	152	348	43.7	320	92.0	43.4
SANGA	150	42	192	21.9	167	87.0	21.6
SOBA	108	12	120	10.0	93	77.5	8.6
ZANGON KATAF	334	107	441	24.3	408	92.5	25.0
ZARIA	321	224	545	41.1	454	83.3	43.4
Grand Total	3,615	1,655	5,270	31.4	4,545	86.2	31.8

Qualified to exclude Grade 2 in line with Federal Policy

Table 4.6 Pupil-teacher ratio by type and LGEA, public senior secondary schools

LGEA	Public	
	All teachers	Qualified teachers
BIRNIN GWARI	24	33
CHIKUN	22	25
GIWA	23	35
IGABI	24	32
IKARA	29	34
JABA	14	17
JEMA'A	18	20
KACHIA	17	19
KADUNA NORTH	8	9
KADUNA SOUTH	36	42
KAGARKO	22	23
KAJURU	25	26
KAURA	24	25
KAURU	35	41
KUBAU	43	48
KUDAN	25	41
LERE	30	31
MAKARFI	28	46
SABON GARI	23	25
SANGA	30	35
SOBA	31	40
ZANGON KATAF	14	15
ZARIA	17	21
Grand Total	21	25

Qualified to exclude Grade 2 in line with Federal Policy

Table 4.7 Percentage of long-term absent teachers (Public Only)

Percentage of long-term absent teachers on:	Primary		Junior secondary		Senior secondary	
	Urban %	Rural %	Urban %	Rural %	Urban %	Rural %
Maternity leave	2.9	1.8	1.3	0.7	0.7	0.5
Sick leave	1.3	1.0	2.6	3.7	0.5	3.9
Training	2.1	3.3	2.0	2.9	2.8	2.6
Secondment	0.8	1.7	0.0	0.2	0.1	0.2
Unauthorised	0.1	0.3	0.1	0.2	0.4	0.2
TOTAL	7.2	8.1	6.0	7.7	4.6	7.5

Table 4.8 Percentage of teachers by highest level of education attained (Public Only)

Percentage of teachers by highest level of education attained:	Primary		Junior secondary		Senior secondary	
	Urban %	Rural %	Urban %	Rural %	Urban %	Rural %
Below SSCE	6.2	10.5	5.6	6.8	1.6	5.9
SSCE / WASC	27.5	42.4	1.9	2.5	1.1	3.4
OND / Diploma	57.7	42.1	48.0	52.3	32.0	44.0
Degree / HND / Graduate	8.7	5.0	44.5	38.3	65.3	46.7

Table 4.9 Percentage of teachers by source of salary (Public Only)

Percentage of teachers by source of salary:	Primary		Junior secondary		Senior secondary	
	Urban %	Rural %	Urban %	Rural %	Urban %	Rural %
Federal Government: FTS	16.1	11.0	0.7	8.4	4.8	6.8
State Government – on the school's payroll	76.1	69.4	93.3	79.8	85.7	82.0
State Government – on another school's payroll	7.1	17.4	0.4	1.5	1.1	1.0
Other, for example PTA or community	0.2	0.5	3.0	4.4	4.6	3.3
No salary, for example volunteer or NYSC	0.2	0.6	2.3	5.4	3.4	6.0

Table 4.10 Percentage of teachers who attended training seminar/workshop (Public Only)

Percentage of teachers who attended training workshop / seminar in last 12 mont:hs	Primary		Junior secondary		Senior secondary	
	Urban %	Rural %	Urban %	Rural %	Urban %	Rural %
Total	19.6	19.0	23.6	25.1	25.0	20.3

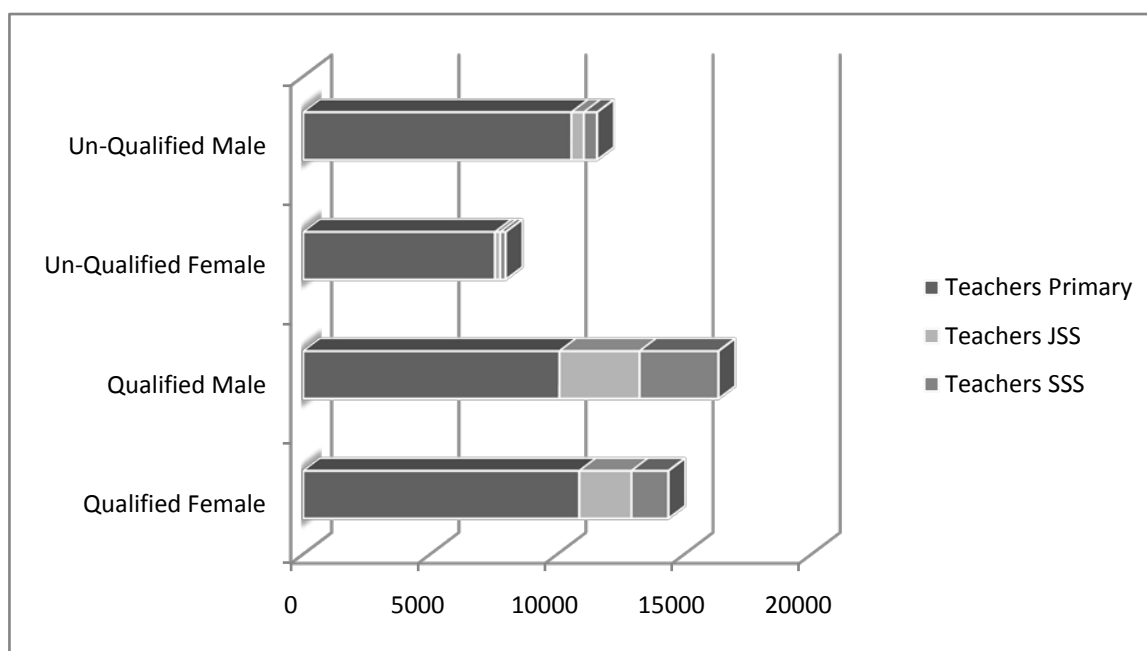
Table 4.11 Number of private school teachers by gender and LGEA, (All Levels)

LGEA	All teachers (Private)				Qualified teachers (Private)		
	Male	Female	Total	% Female	Total	% Qualified	% Female
BIRNIN GWARI	39	36	75	48.0	58	77.3	39.7
CHIKUN	1,463	1,726	3,189	54.1	2,607	81.7	51.4
GIWA	229	97	326	29.8	226	69.3	27.0
IGABI	322	327	649	50.4	541	83.4	48.4
IKARA	34	31	65	47.7	44	67.7	34.1
JABA	76	92	168	54.8	113	67.3	46.0
JEMA'A	356	305	661	46.1	582	88.0	43.8
KACHIA	212	148	360	41.1	304	84.4	41.1
KADUNA NORTH	1,424	2,081	3,505	59.4	2,778	79.3	57.8
KADUNA SOUTH	1,100	1,510	2,610	57.9	2,105	80.7	55.4
KAGARKO	90	73	163	44.8	75	46.0	28.0
KAJURU	132	88	220	40.0	108	49.1	42.6
KAURA	88	85	173	49.1	135	78.0	48.1
KAURU	118	-	118	-	66	55.9	-
KUBAU	91	60	151	39.7	59	39.1	35.6
KUDAN	12	12	24	50.0	16	66.7	56.3
LERE	249	138	387	35.7	266	68.7	34.6
MAKARFI	45	34	79	43.0	77	97.5	41.6
SABON GARI	709	793	1,502	52.8	1,388	92.4	51.9
SANGA	115	68	183	37.2	166	90.7	36.7
SOBA	10	7	17	41.2	14	82.4	50.0
ZANGON KATAF	154	154	308	50.0	259	84.1	44.8
ZARIA	767	647	1,414	45.8	1,267	89.6	45.7
Grand Total	7,835	8,512	16,347	52.1	13,254	81.1	50.4

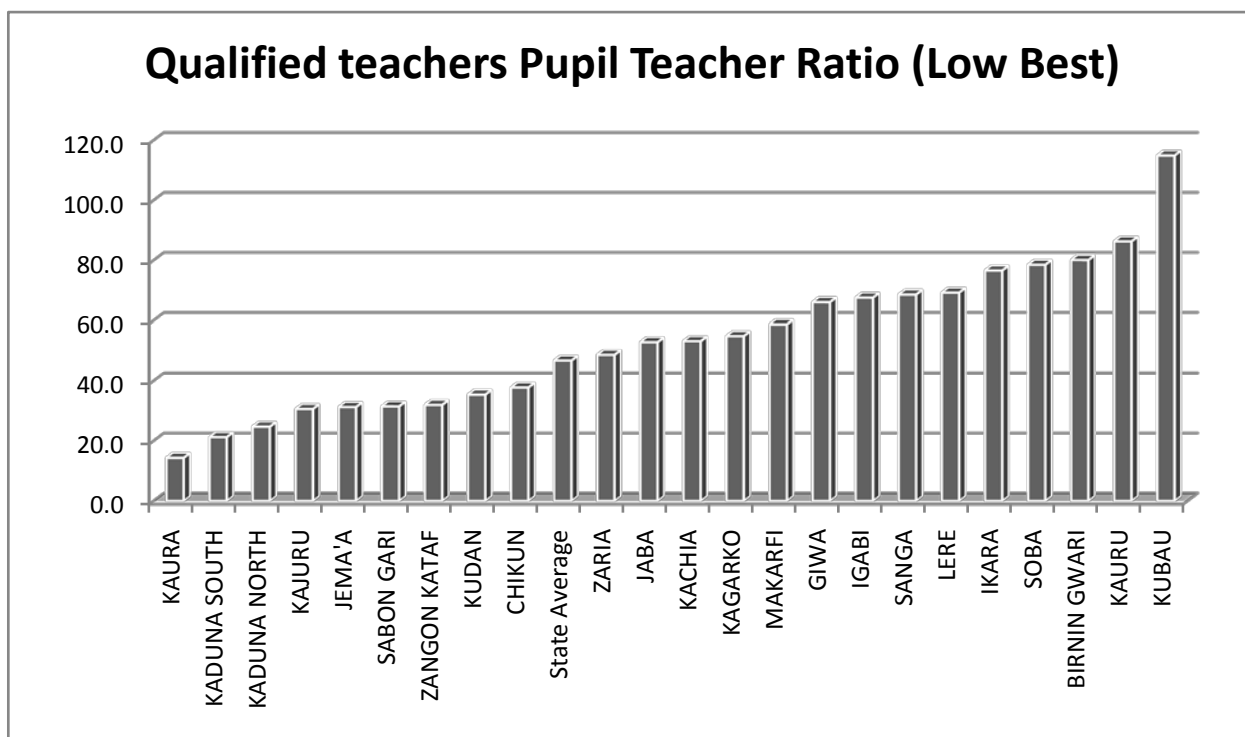
Table 4.12 Pupil-teacher ratio in private schools by LGEA, (All Levels)

LGEA	Private	
	All teachers	Qualified teachers
BIRNIN GWARI	19	24
CHIKUN	13	16
GIWA	14	21
IGABI	14	17
IKARA	12	18
JABA	11	16
JEMA'A	13	14
KACHIA	29	35
KADUNA NORTH	11	14
KADUNA SOUTH	16	20
KAGARKO	12	25
KAJURU	6	13
KAURA	7	10
KAURU	37	67
KUBAU	11	28
KUDAN	5	7
LERE	16	23
MAKARFI	10	11
SABON GARI	16	17
SANGA	15	16
SOBA	0	0
ZANGON KATAF	14	16
ZARIA	18	20
Grand Total	14	17

Graph3 Kaduna: Teachers by Grade Taught, Gender and Qualification



Graph 4 Kaduna: Ranked Pupil /Qualified Teacher Ratio (Primary) by LGEA



5. Facilities

Table 5.1 Number of classrooms by school type and LGEA

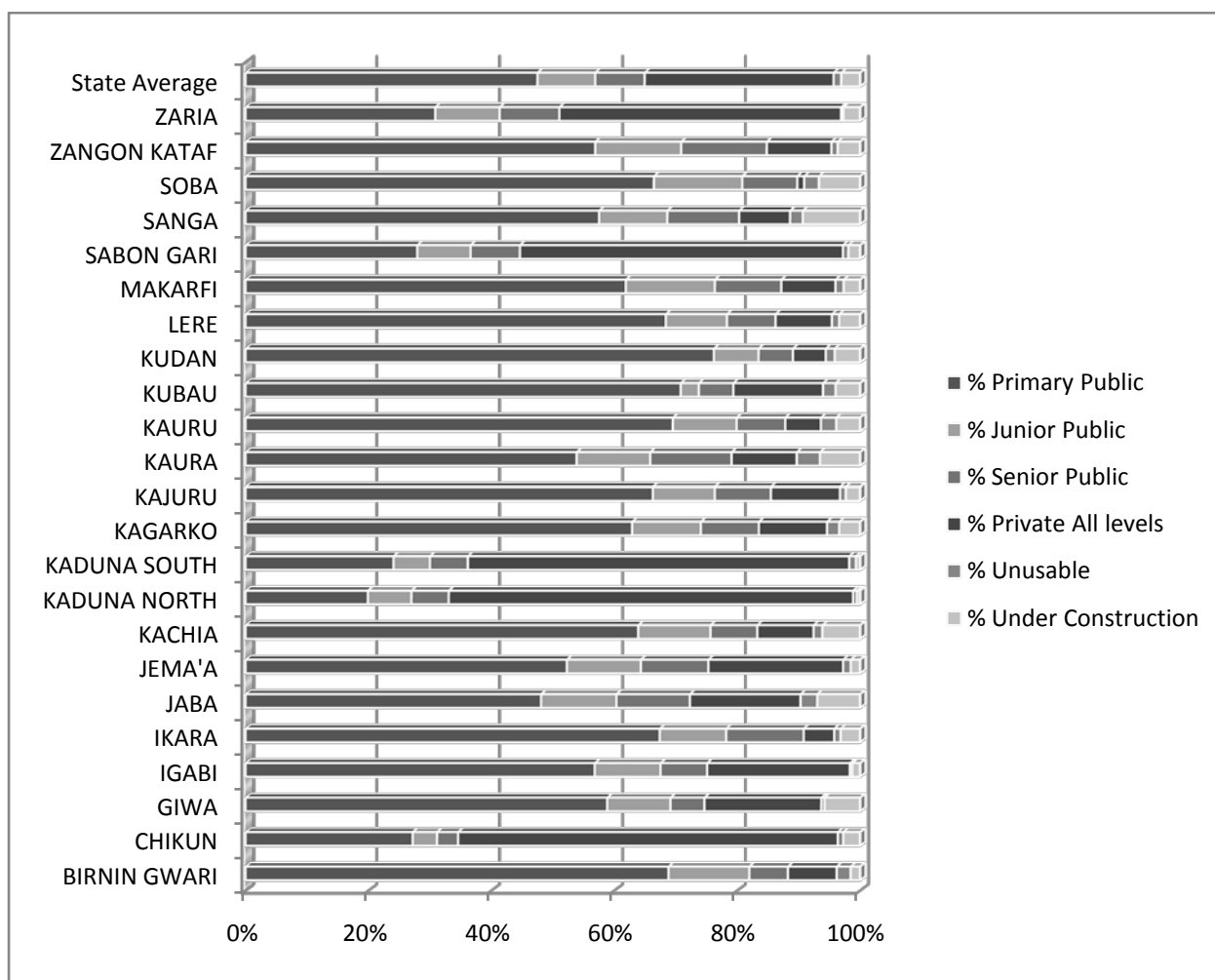
LGEA	No of Usable Classrooms					Number Unusable *	Number Under Construction *
	Primary Public	Junior Public	Senior Public	Private All levels	TOTAL		
BIRNIN GWARI	634	121	58	73	886	21	14
CHIKUN	1,009	147	127	2,292	3,575	33	101
GIWA	458	80	43	148	729	4	45
IGABI	998	188	133	408	1,727	7	22
IKARA	449	72	84	33	638	7	21
JABA	318	81	79	119	597	18	46
JEMA'A	799	184	168	335	1,486	19	23
KACHIA	1,158	213	138	166	1,675	26	111
KADUNA NORTH	616	219	188	2,035	3,058	19	16
KADUNA SOUTH	589	145	151	1,518	2,403	27	16
KAGARKO	726	129	109	128	1,092	23	39
KAJURU	631	96	87	107	921	9	22
KAURA	513	114	126	101	854	36	62
KAURU	897	134	102	75	1,208	32	50
KUBAU	694	29	55	143	921	20	39
KUDAN	314	30	23	22	389	6	17
LERE	1,210	176	140	162	1,688	21	60
MAKARFI	372	87	65	53	577	8	16
SABON GARI	442	137	127	831	1,537	14	30
SANGA	389	75	79	56	599	14	63
SOBA	527	114	71	9	721	19	53
ZANGON KATAF	1,050	258	257	194	1,759	19	67
ZARIA	674	229	212	1,001	2,116	8	59
Grand Total	15,467	3,058	2,622	10,009	31,156	410	992

* Question of usability not asked in Private school census so assumed 100% Usable

Table 5.2 Pupil-classroom ratio by school type and LGEA

LGEA	Public			Private
	Pre-primary and Primary	Junior Secondary	Senior Secondary	All levels
BIRNIN GWARI	70.6	48.2	27.6	26.8
CHIKUN	55.1	70.3	43.1	23.9
GIWA	108.2	57.4	46.6	38.4
IGABI	72.3	63.3	47.8	30.0
IKARA	86.2	54.8	32.3	37.5
JABA	111.1	50.4	42.5	21.5
JEMA'A	63.3	38.7	45.5	35.9
KACHIA	40.7	32.4	25.3	91.3
KADUNA NORTH	67.4	66.5	24.1	25.4
KADUNA SOUTH	75.6	56.5	62.6	34.1
KAGARKO	49.8	58.8	35.2	25.1
KAJURU	47.2	55.7	66.0	22.6
KAURA	33.2	45.8	27.5	42.4
KAURU	48.6	54.5	48.8	74.1
KUBAU	71.5	106.9	93.8	24.7
KUDAN	85.5	78.6	53.7	11.6
LERE	57.7	66.7	38.0	58.3
MAKARFI	86.1	45.4	43.2	24.9
SABON GARI	91.6	80.3	63.4	36.6
SANGA	132.8	145.5	74.0	68.3
SOBA	105.2	36.5	52.3	23.6
ZANGON KATAF	46.3	34.8	23.9	29.5
ZARIA	114.4	72.2	44.9	33.9
Grand Total	68.8	57.4	42.9	31.3

Graph 5 Kaduna: Percentage Classroom Functions by Level and Use by LGE



Graph 6 Kaduna: Primary Pupil Toilet Ratio (Ranked by LGEA) Lowest Best

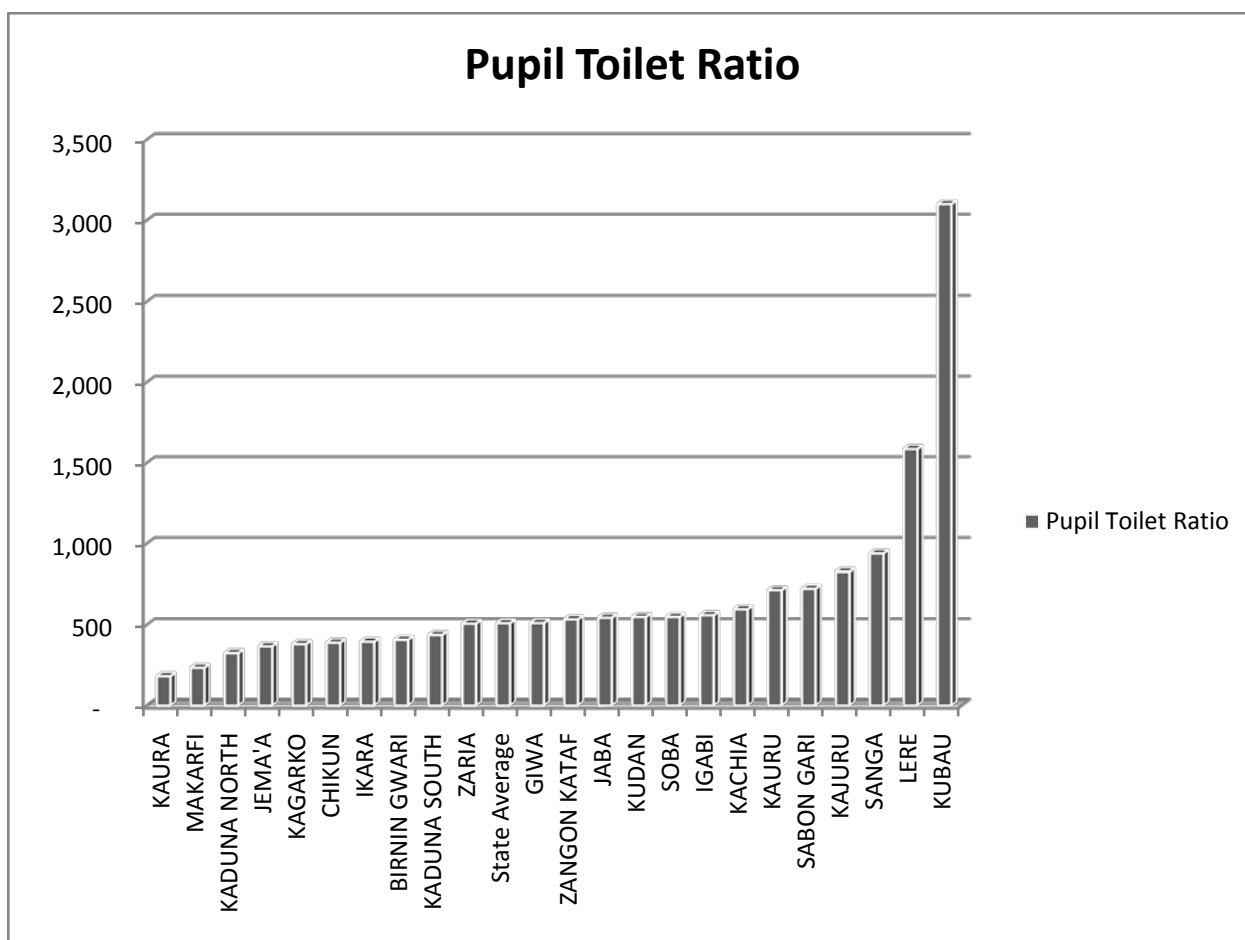


Table 5.3 Selective characteristics of public Primary school facilities

LGEA	Percentage of Usable Classrooms			Percentage of Schools	
	In need of major repairs	With insufficient seating	Without a good blackboard	Where some classes are held outside	Without a health facility
BIRNIN GWARI	35.9	62.1	54.2	42.3	91.2
CHIKUN	43.9	74.5	63.9	18.4	91.0
GIWA	33.8	5.3	23.5	22.2	87.9
IGABI	29.4	71.4	45.6	18.1	95.4
IKARA	30.0	56.4	46.1	24.1	86.9
JABA	26.1	0.3	0.3	55.0	88.0
JEMA'A	36.9	55.1	42.3	10.9	90.3
KACHIA	49.5	74.5	60.3	36.0	93.3
KADUNA NORTH	38.0	62.2	50.0	2.4	24.4
KADUNA SOUTH	23.3	66.8	40.9	11.1	25.0
KAGARKO	56.3	81.0	66.8	56.2	88.1
KAJURU	39.2	54.6	53.6	24.3	69.1
KAURA	53.5	83.4	69.5	42.2	85.3
KAURU	48.3	68.5	52.5	41.2	93.8
KUBAU	38.4	66.4	51.8	44.5	84.0
KUDAN	34.4	75.5	51.3	31.5	84.3
LERE	46.8	78.1	71.8	42.9	93.7
MAKARFI	22.5	64.0	52.7	13.7	87.2
SABON GARI	26.2	56.1	46.8	7.4	51.9
SANGA	40.4	81.7	64.8	39.4	89.1
SOBA	29.3	72.3	45.9	40.9	91.8
ZANGON KATAF	35.5	45.0	38.3	25.4	65.1
ZARIA	11.7	70.0	38.9	21.4	77.8
Grand Total	38.0	64.9	51.8	32.0	2.1

Table 5.4 Selective characteristics of public Junior Secondary school facilities

LGEA	Percentage of Usable Classrooms			Percentage of Schools	
	In need of major repairs	With insufficient seating	Without a good blackboard	Where some classes are held outside	Without a health facility
BIRNIN GWARI	12.4	38.8	28.1	5.6	5.6
CHIKUN	32.0	57.8	58.5	5.6	33.3
GIWA	12.5	0.0	0.0	21.4	28.6
IGABI	9.0	55.0	14.8	-	12.5
IKARA	11.1	65.3	23.6	7.7	7.7
JABA	35.8	0.0	0.0	-	21.4
JEMA'A	34.2	56.0	43.5	-	10.0
KACHIA	36.2	76.5	30.5	3.3	46.7
KADUNA NORTH	11.4	50.0	24.5	5.6	16.7
KADUNA SOUTH	18.6	58.6	21.4	10.0	-
KAGARKO	32.6	60.5	21.7	19.0	9.5
KAJURU	33.3	71.1	53.5	7.1	28.6
KAURA	19.4	73.1	28.4	-	8.3
KAURU	18.8	67.7	32.3	5.6	33.3
KUBAU	3.4	20.7	0.0	50.0	20.0
KUDAN	13.3	60.0	0.0	-	-
LERE	10.2	75.0	22.7	4.0	4.0
MAKARFI	25.3	62.1	25.3	27.3	18.2
SABON GARI	24.1	97.1	52.6	7.7	-
SANGA	30.8	64.1	11.5	13.3	46.7
SOBA	7.0	48.2	11.4	-	15.4
ZANGON KATAF	38.4	64.0	35.7	2.4	33.3
ZARIA	14.7	44.2	22.1	9.5	9.5
Grand Total	22.3	58.1	27.8	7.5	20.1

Table 5.5 Selective characteristics of public Senior Secondary school facilities

LGEA	Percentage of Usable Classrooms			Percentage of Schools	
	In need of major repairs	With insufficient seating	Without a good blackboard	Where some classes are held outside	Without a health facility
BIRNIN GWARI	13.8	24.1	29.3	-	-
CHIKUN	35.4	44.1	56.7	7.7	7.7
GIWA	18.6	0.0	7.0	-	16.7
IGABI	7.5	44.4	18.8	-	-
IKARA	21.4	52.4	45.2	-	-
JABA	36.7	0.0	0.0	-	9.1
JEMA'A	42.3	65.5	56.0	5.6	5.6
KACHIA	37.2	64.2	34.3	-	12.5
KADUNA NORTH	23.4	38.8	33.0	-	35.3
KADUNA SOUTH	23.2	57.0	27.8	7.7	7.7
KAGARKO	17.4	40.4	22.9	14.3	-
KAJURU	20.6	72.2	47.6	-	-
KAURA	28.4	66.7	27.5	-	-
KAURU	28.7	80.5	34.5	9.1	-
KUBAU	16.4	80.0	41.8	7.7	-
KUDAN	26.1	82.6	39.1	-	33.3
LERE	13.7	58.8	24.4	-	6.7
MAKARFI	35.4	84.6	60.0	-	-
SABON GARI	22.0	90.6	37.0	9.1	9.1
SANGA	24.1	64.6	25.3	9.1	18.2
SOBA	11.3	71.8	22.5	-	-
ZANGON KATAF	31.3	58.6	28.9	-	12.5
ZARIA	6.6	52.8	19.8	7.1	7.1
Grand Total	23.9	56.6	32.4	3.4	8.4

Table 5.6 Main source of safe water in public primary schools, percentage of schools

LGEA	Percentage of schools with:					Total
	Piped water	Borehole	Well	Other	No Source	
BIRNIN GWARI	1.1	12.6	13.2	0.0	73.1	100.0
CHIKUN	2.7	16.1	8.5	12.1	60.5	100.0
GIWA	0.0	12.1	2.0	3.5	82.3	100.0
IGABI	0.7	7.8	19.6	11.0	60.9	100.0
IKARA	0.7	18.2	21.2	4.4	55.5	100.0
JABA	0.0	16.0	1.0	4.0	79.0	100.0
JEMA'A	1.7	12.0	14.3	16.0	56.0	100.0
KACHIA	0.0	6.0	3.2	6.7	84.1	100.0
KADUNA NORTH	34.1	0.0	19.5	4.9	41.5	100.0
KADUNA SOUTH	19.4	19.4	13.9	0.0	47.2	100.0
KAGARKO	0.0	8.1	3.3	14.8	73.8	100.0
KAJURU	0.7	19.1	17.6	1.5	61.0	100.0
KAURA	2.0	27.5	2.9	13.7	53.9	100.0
KAURU	0.0	5.1	8.6	10.1	76.3	100.0
KUBAU	0.4	8.6	7.8	7.0	76.2	100.0
KUDAN	0.0	19.1	12.4	1.1	67.4	100.0
LERE	0.4	7.1	4.5	1.9	86.2	100.0
MAKARFI	0.0	20.5	15.4	6.0	58.1	100.0
SABON GARI	3.7	37.0	25.9	5.6	27.8	100.0
SANGA	0.5	13.5	5.7	8.8	71.5	100.0
SOBA	0.0	14.4	10.6	1.9	73.1	100.0
ZANGON KATAF	0.0	13.4	18.0	12.0	56.7	100.0
ZARIA	2.6	17.9	30.8	1.7	47.0	100.0
Grand Total	1.2	12.5	10.9	7.3	68.2	100.0

Table 5.7 Main source of safe water in public Junior Secondary schools, percentage of schools

LGEA	Percentage of schools with:					Total
	Piped water	Borehole	Well	Other	No Source	
BIRNIN GWARI	-	33.3	61.1	-	5.6	100.0
CHIKUN	5.6	22.2	61.1	-	11.1	100.0
GIWA	-	21.4	57.1	-	21.4	100.0
IGABI	-	16.7	58.3	-	25.0	100.0
IKARA	-	38.5	38.5	-	23.1	100.0
JABA	7.1	14.3	35.7	21.4	21.4	100.0
JEMA'A	-	15.0	45.0	-	40.0	100.0
KACHIA	-	13.3	13.3	-	73.3	100.0
KADUNA NORTH	33.3	33.3	22.2	-	11.1	100.0
KADUNA SOUTH	30.0	30.0	20.0	-	20.0	100.0
KAGARKO	-	14.3	38.1	14.3	33.3	100.0
KAJURU	-	35.7	35.7	14.3	14.3	100.0
KAURA	8.3	33.3	33.3	8.3	16.7	100.0
KAURU	-	16.7	61.1	5.6	16.7	100.0
KUBAU	-	40.0	50.0	-	10.0	100.0
KUDAN	-	40.0	60.0	-	-	100.0
LERE	-	24.0	60.0	4.0	12.0	100.0
MAKARFI	-	54.5	27.3	-	18.2	100.0
SABON GARI	30.8	23.1	30.8	-	15.4	100.0
SANGA	-	13.3	46.7	6.7	33.3	100.0
SOBA	-	30.8	38.5	7.7	23.1	100.0
ZANGON KATAF	-	16.7	21.4	-	61.9	100.0
ZARIA	9.5	33.3	33.3	-	23.8	100.0
Grand Total	4.5	24.1	39.8	3.3	28.3	100.0

Table 5.8 Main source of safe water in public Senior Secondary schools, percentage of schools

LGEA	Percentage of schools with:					Total
	Piped water	Borehole	Well	Other	None	
BIRNIN GWARI	-	57.1	42.9	-	-	100.0
CHIKUN	7.7	15.4	61.5	-	15.4	100.0
GIWA	-	33.3	66.7	-	-	100.0
IGABI	-	30.8	69.2	-	-	100.0
IKARA	25.0	12.5	25.0	-	25.0	100.0
JABA	-	27.3	45.5	9.1	18.2	100.0
JEMA'A	-	27.8	38.9	-	22.2	100.0
KACHIA	-	50.0	50.0	-	-	100.0
KADUNA NORTH	-	23.5	11.8	-	64.7	100.0
KADUNA SOUTH	61.5	23.1	7.7	-	7.7	100.0
KAGARKO	28.6	28.6	28.6	-	14.3	100.0
KAJURU	-	16.7	58.3	16.7	8.3	100.0
KAURA	-	37.5	37.5	12.5	12.5	100.0
KAURU	18.2	18.2	36.4	9.1	18.2	100.0
KUBAU	-	38.5	61.5	-	-	100.0
KUDAN	-	33.3	-	66.7	-	100.0
LERE	-	33.3	53.3	-	13.3	100.0
MAKARFI	-	60.0	40.0	-	-	100.0
SABON GARI	36.4	18.2	27.3	-	18.2	100.0
SANGA	-	18.2	54.5	18.2	9.1	100.0
SOBA	-	50.0	33.3	-	16.7	100.0
ZANGON KATAF	-	15.6	37.5	-	40.6	100.0
ZARIA	7.1	35.7	28.6	-	28.6	100.0
Grand Total	7.6	27.5	40.5	3.4	19.1	100.0

Table 5.9 Toilets in public primary schools

LGEA	No of Public Primary and Pre Primary Schools with						Pupil Toilet Ratio
	No toilet	One toilet	Two toilets	Three toilets	Four toilets	Five or more toilets	
BIRNIN GWARI	150	6	11	3	5	7	407
CHIKUN	187	1	17	2	9	7	389
GIWA	182	1	6	2	1	6	511
IGABI	238	6	24	2	7	4	559
IKARA	104	8	13	4	4	4	395
JABA	75	4	14	1	4	2	544
JEMA'A	142	7	11	3	3	9	367
KACHIA	257	3	13		5	5	596
KADUNA NORTH	25		2	1	2	11	325
KADUNA SOUTH	20	1	2	2	3	8	437
KAGARKO	181	3	14	1	5	6	380
KAJURU	118	8	5	2	3	-	827
KAURA	70	7	12	4	4	5	181
KAURU	236	3	13		2	3	715
KUBAU	247	3	5	1		-	3,100
KUDAN	69	3	11	1	4	1	548
LERE	249	5	11		1	2	1,586
MAKARFI	95	3	11	1	2	5	234
SABON GARI	32	5	8	3	5	1	723
SANGA	168	7	12	2	3	1	939
SOBA	174	2	20	1	4	7	549
ZANGON KATAF	245	11	17	3	6	2	534
ZARIA	70	5	23	4	4	11	507
Grand Total	3,334	102	275	43	86	107	510

Excludes Staff Only Toilets

Table 5.10 Toilets in public Junior Secondary schools

LGEA	No of Junior Secondary Schools with						Pupil Toilet Ratio
	No toilet	One toilet	Two toilets	Three toilets	Four toilets	Five or more toilets	
BIRNIN GWARI	6		5	2	2	3	101
CHIKUN	6		2	3	2	5	169
GIWA	6		4		1	3	98
IGABI	6	2	3		3	10	112
IKARA	6	4	2		1	-	329
JABA	8		2		1	3	45
JEMA'A	7		7		2	4	158
KACHIA	16	1	7		3	3	121
KADUNA NORTH	5		1		2	10	83
KADUNA SOUTH	2		2		2	4	101
KAGARKO	14		1	1	1	4	200
KAJURU	6	1	1	1	3	2	167
KAURA	5		4		2	1	238
KAURU	9	1	3		1	4	170
KUBAU	5		3			2	55
KUDAN	2	1	1		1	-	337
LERE	6		9		2	8	143
MAKARFI	3	3	2			3	65
SABON GARI	1	1	1	2	1	7	110
SANGA	10		2			3	404
SOBA	1	3	3		1	5	57
ZANGON KATAF	35		2	1	2	2	249
ZARIA	4	1	2	2	2	10	100
Grand Total	169	18	69	12	35	96	119

Excludes Staff Only Toilets

Table 5.11 Toilets in public Senior Secondary schools

LGEA	No of Public Senior Secondary Schools with						Pupil Toilet Ratio
	No toilet	One toilet	Two toilets	Three toilets	Four toilets	Five or more toilets	
BIRNIN GWARI	2			1	1	3	37
CHIKUN	4		2	2		5	94
GIWA					2	4	36
IGABI			2		2	9	75
IKARA	4	2	1		1	-	339
JABA	5	1	1	1		3	38
JEMA'A	5		5		5	3	125
KACHIA	9	1	3		2	2	146
KADUNA NORTH	3		1		1	8	63
KADUNA SOUTH	2		1		1	3	33
KAGARKO	6			1	1	4	134
KAJURU	3		2		1	2	151
KAURA	4	1	4		1	1	277
KAURU	4		2		2	5	65
KUBAU	4				1	3	100
KUDAN	1				2	-	155
LERE	4		2		2	7	71
MAKARFI	1					4	44
SABON GARI	4	1	1		1	4	126
SANGA	8		1			2	365
SOBA	2		2			2	218
ZANGON KATAF	17		5	1	4	5	65
ZARIA	3		2		2	7	74
Grand Total	95	6	37	6	32	86	83

Excludes Staff Only Toilets

Annex A Key Indicators (Efficiency Indicators)

A1. Transition Rate from Pry 6 to JSS 1

LGEA	Transition Rate Male	Transition Rate Female	Transition Rate Total
BIRNIN GWARI	35.1	43.3	38.2
CHIKUN	102.6	115.1	108.6
GIWA	70.5	69.6	70.2
IGABI	59.4	55.1	57.7
IKARA	35.5	26.8	32.3
JABA	33.5	34.8	34.2
JEMA'A	44.9	51.9	48.2
KACHIA	44.1	48.7	46.3
KADUNA NORTH	88.3	96.8	92.5
KADUNA SOUTH	82.6	83.9	83.2
KAGARKO	62.6	50.1	56.8
KAJURU	43.9	28.7	36.5
KAURA	66.2	65.0	65.6
KAURU	43.1	37.2	40.4
KUBAU	31.0	31.4	31.2
KUDAN	25.5	21.5	24.2
LERE	52.9	47.5	50.5
MAKARFI	31.7	22.1	28.3
SABON GARI	92.8	88.6	90.9
SANGA	68.2	52.7	60.3
SOBA	59.4	33.4	51.0
ZANGON KATAF	41.0	42.2	41.6
ZARIA	54.7	49.9	52.5
Grand Total	57.4	57.4	57.4

A2. Promotion rate by class and gender

Grade	Promotion		
	Boys	Gils	Total
PRY1	78.7	77.2	78.0
PRY 2	87.1	89.5	88.2
PRY 3	89.1	88.1	88.7
PRY 4	87.7	85.6	86.7
PRY 5	79.7	81.6	80.5
PRY 6	56.5	56.6	56.5
JSS 1	93.0	104.0	97.5
JSS 2	126.8	130.4	128.3
JSS 3	59.5	62.1	60.6
SSS 1	92.2	94.7	93.3

A3. Repetition rate by class and gender

Grade	Repetition		
	Boys	Gils	Total
PRY1	9.8	10.4	10.0
PRY 2	8.0	8.9	8.4
PRY 3	7.4	8.1	7.7
PRY 4	7.2	7.6	7.4
PRY 5	6.5	7.4	6.9
PRY 6	3.9	4.2	4.0
JSS 1	5.9	6.5	6.1
JSS 2	1.7	1.5	1.6
JSS 3	5.9	4.5	5.3
SSS 1	7.8	5.3	6.7

A4. Dropout rate by class and gender

Grade	Drop Out		
	Boys	Gils	Total
PRY1	11.5	12.4	11.9
PRY 2	4.9	1.6	3.4
PRY 3	3.5	3.8	3.6
PRY 4	5.1	6.8	5.9
PRY 5	13.8	11.0	12.6
PRY 6	39.7	39.2	39.4
JSS 1	1.0	-10.5	-3.6
JSS 2	-28.5	-31.9	-30.0
JSS 3	34.7	33.4	34.1
SSS 1	0.0	0.0	0.0

A5. Survival rate by class and gender

Grade	Drop Out		
	Boys	Gils	Total
PRY1	100.0	100.0	100.0
PRY 2	87.3	86.1	86.7
PRY 3	82.6	84.6	83.5
PRY 4	80.4	80.1	80.2
PRY 5	75.9	74.2	75.1
PRY 6	64.7	65.4	65.0
JSS 1	38.0	38.6	38.3
JSS 2	37.6	43.0	39.8
JSS 3	48.5	56.9	51.9
SSS 1	30.7	37.0	33.2

Annex B Population projections

B1. Population projections by LGEA, 2009

LGEA	6-11 Years			6-Years		
	Boys	Girls	Total	Boys	Girls	Total
BIRNIN GWARI	14,561	14,844	29,398	23,626	23,841	47,457
CHIKUN	21,204	21,707	42,898	34,404	34,863	69,250
GIWA	16,364	17,020	33,366	26,551	27,334	53,863
IGABI	24,879	25,248	50,118	40,368	40,549	80,905
IKARA	10,991	11,616	22,591	17,833	18,656	36,468
JABA	9,109	8,987	18,100	14,780	14,434	29,219
JEMA'A	16,528	15,926	32,470	26,818	25,577	52,417
KACHIA	14,144	14,316	28,456	22,949	22,992	45,936
KADUNA NORTH	21,134	20,517	41,668	34,292	32,951	67,265
KADUNA SOUTH	23,883	22,967	46,875	38,751	36,886	75,670
KAGARKO	14,462	13,582	28,068	23,465	21,813	45,310
KAJURU	6,321	6,601	12,915	10,257	10,602	20,849
KAURA	13,090	12,831	25,929	21,240	20,607	41,856
KAURU	9,803	10,007	19,805	15,906	16,071	31,970
KUBAU	16,185	16,684	32,856	26,261	26,795	53,039
KUDAN	8,050	8,143	16,191	13,062	13,078	26,138
LERE	18,993	19,600	38,578	30,817	31,478	62,275
MAKARFI	8,465	8,576	17,038	13,734	13,773	27,504
SABON GARI	16,907	16,500	33,418	27,432	26,500	53,947
SANGA	8,656	8,743	17,396	14,044	14,041	28,082
SOBA	16,861	17,314	34,164	27,359	27,806	55,150
ZANGON KATAF	18,228	18,637	36,855	29,575	29,932	59,494
ZARIA	24,288	23,235	47,552	39,408	37,316	76,722
Grand Total	353,104	353,601	706,706	572,933	567,895	1,140,827

Annex C Additional Census Information

C1. LGEA Report Cards

LGA Report Cards provide a comparable set of data for each LGA in Kaduna. Reports are available from the EMIS Unit at the State Ministry of Education for

LGEA Code	LGEA
1901	BIRNIN GWARI
1902	CHIKUN
1903	GIWA
1904	IGABI
1905	IKARA
1906	JABA
1907	JEMA'A
1908	KACHIA
1909	KADUNA NORTH
1910	KADUNA SOUTH
1911	KAGARKO
1912	KAJURU
1913	KAURA
1914	KAURU
1915	KUBAU
1916	KUDAN
1917	LERE
1918	MAKARFI
1919	SABON GARI
1920	SANGA
1921	SOBA
1922	ZANGON KATAF
1923	ZARIA

(See sample on next page).

C2. School Report Cards

School Report Cards are separately available on request for the majority of Primary and Junior Secondary schools in Kaduna. (See sample on next page).

Please contact the EMIS Unit at the State Ministry of Education for any particular school report cards you require.

C3. Annual Education Sector Review 2009/10

Available from the EMIS Unit at the State Ministry of Education

C4. Analysis Service

Available from the EMIS Unit at the State Ministry of Education and SUBEB

C5. School Lists

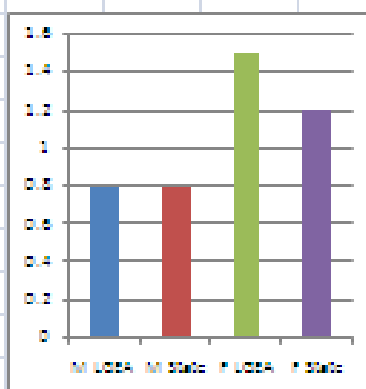
Available from the EMIS Unit at the State Ministry of Education and SUBEB

LOCAL GOVERNMENT EDUCATION AUTHORITY REPORT CARD BASED ON ANNUAL SCHOOL CENSUS 2009-2010

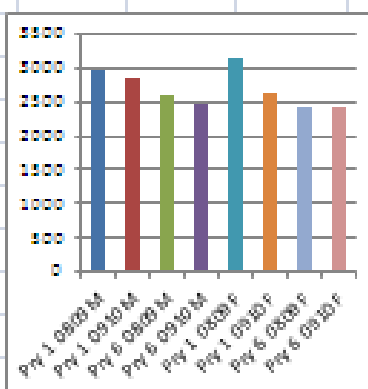
State: Kaduna	Schools	Total	Responded	Enrolment			Teachers Total
LGEA: Kaduna South	Public	63	59	Boys	Girls	Total	
Code: 1910	Private	257	116	16,044	15,477	31,521	2,610
	Total	320	175	43,517	41,364	84,881	5,828

ENROLMENT IN PUBLIC SCHOOLS

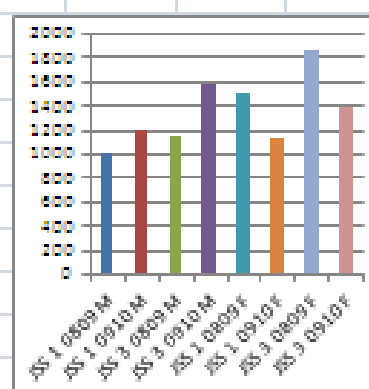
Primary Enrolment Ratio



Enrolment in PRT1 and PRT 2



Enrolment in JSS 1 and JSS 2



FACILITIES IN PUBLIC SCHOOLS

	LGEA	State
Pupil-Classroom ratio		
Primary	75.6	68.8
Primary schools where ratio is 60+	67%	53%
Junior secondary	56.5	57.4
Schools where ratio is 60+	50%	42%
Classrooms, primary		
In need of major repair	6%	19%
With sufficient seating	16%	32%
Constructed since 2005	29%	35%
Classrooms, junior secondary		
In need of major repair	22%	22%
With sufficient seating	41%	40%
Constructed since 2005	25%	43%
Water sanitation, primary		
Schools with safe water supply	53%	31%
Schools with at least one toilet	56%	18%
Water sanitation, junior		
Schools with safe water supply	80%	69%
Schools with at least one toilet	90%	62%

TEACHERS IN PUBLIC SCHOOLS

	LGEA	State
Pupil-Teacher ratio		
Primary schools	13.6	25.1
Primary schools where ratio is 60+	0%	13%
Junior secondary schools	25.7	29.7
Schools where ratio is 60+	0%	8%
Pupil per qualified teacher		
Primary schools	21.2	46.8
Junior secondary schools	27.5	33.7
Highest level of education attained		
Prty Teachers without SSCE	36%	46%
Prty Teachers up to SSCE/WASC	95%	95%
JSS Teachers without SSCE	7%	12%
JSS Teachers up to SSCE/WASC	56%	69%
In-service training		
Teachers trained in part year	14%	20%
Teachers long-term absent, training	83%	76%
Proportion of female teachers		
Primary	78%	47%
Junior secondary	66%	38%

**PRIMARY SCHOOL REPORT CARD
BASED ON ANNUAL SCHOOL CENSUS 2009-2010**

CODE : 1901048120

Name: KDP10236

SCHOOL : LGEA KIRYOYI PRIMARY SCHOOL

Address: FUNTUA ROAD

Village KIRYOYI

Town MAGANDA

LGEA : BIRNIN GWARI

	Male	Female	Total
Enrolment	104	72	176
Teachers	3	1	4
Classrooms	4	Shifts	Single

TEACHERS

IN THIS SCHOOL

2 of 4 teachers have at least a minimum teaching qualification (NCE)

0 of 4 teachers have at least a degree or HND

2 of 4 teachers attended training last year

1 of 4 teachers are female

There are 44 pupils for every teacher

IN THIS LGEA, THE AVERAGE SCHOOL

540 of 1,038 teachers have at least a minimum teaching qualification (NCE)

20 of 1,038 teachers have at least a degree or HND

356 of 1,038 teachers attended training last year

381 of 1,038 teachers are female

There are 41 pupils for every teacher

IN THE STATE, THE AVERAGE SCHOOL

20,273 of 37,807 teachers have at least a minimum teaching qualification (NCE)

2,036 of 37,807 teachers have at least a degree or

7,178 of 37,807 teachers attended training last year

18,016 of 37,807 teachers are female

There are 27 pupils for every teacher

FACILITIES

IN THIS SCHOOL

There is a pupil classroom ratio of 44

0 of 4 Classrooms are in need of major repair

4 of 4 Classrooms have a working blackboard

IN THIS LGEA, THE AVERAGE SCHOOL

There is a pupil classroom ratio of 65

238 of 656 Classrooms are in need of major repair

408 of 656 Classrooms have a working blackboard

IN THE STATE, THE AVERAGE SCHOOL

There is a pupil classroom ratio of 61

6,573 of 16,839 Classrooms are in need of

10,709 of 16,839 Classrooms have a working