



PRINCE OLAGUNSOYE OYINLOLA

EXECUTIVE GOVERNOR OF OSUN STATE



ERELU OLUSOLA OBADA
DEPUTY GOVERNOR OF OSUN STATE





ALHAJI KAZEEM A. ADIO
SECRETARY TO THE STATE GOVERNMENT



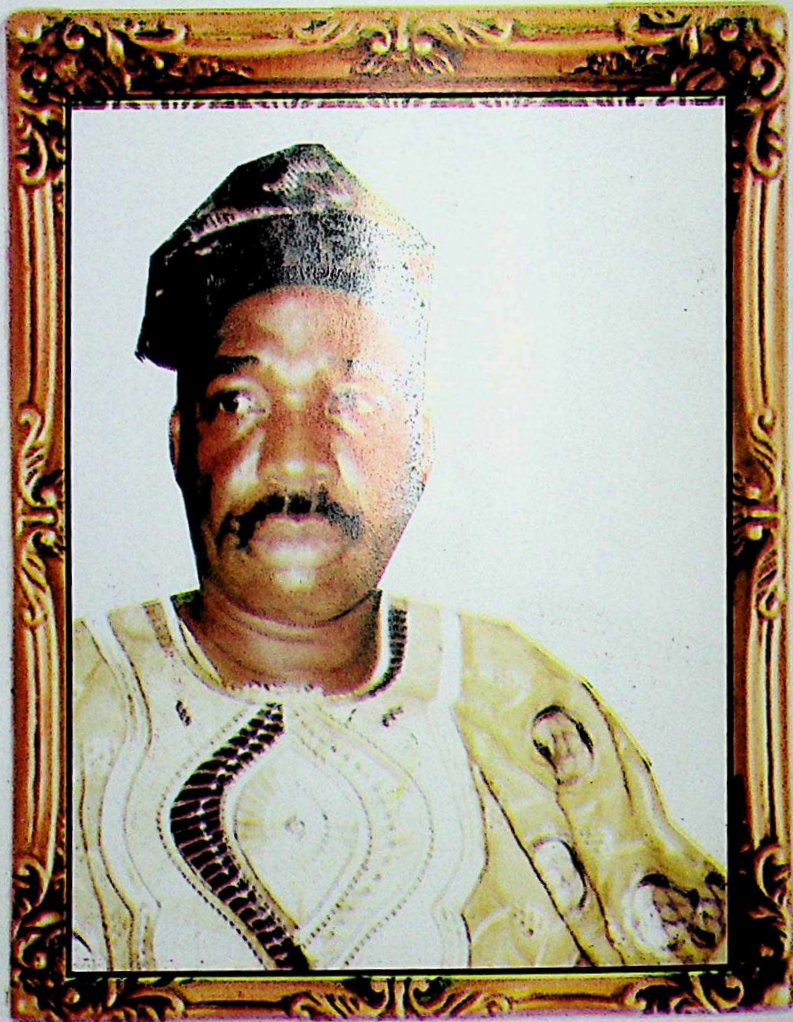


MR. FESTUS ADEYEMO
CHIEF OF STAFF TO THE GOVERNMENT OSUN STATE



ELDER SEGUN AKINWUSI
HEAD OF SERVICE, OSUN STATE.





ALHAJI KAMARUDEEN BOLA ADEKUNLE
CHAIRMAN, OSPDC.



MR. R. A. OYINLOLA

*PERMANENT SECRETARY, BUREAU OF PAKASTATALS
OFFICE OF THE GOVERNOR*



MRS. M. O. ADETOYE
GENERAL MANAGER OSPDC.

OSPDC BOARD MEMBERS



Hon. Moses Fateye
Board Member



ALH. Muniru Ayoade Kudaisi
Board Member



Alh. S. Ayanlowo
Board Member



MOSES S. ADETOYE
GENERAL MANAGER



ALH. K. B. ADEKUNLE
CHAIRMAN,



Alh. Lawal Yekini
Board Member



Elder A. Omotayo
Board Member



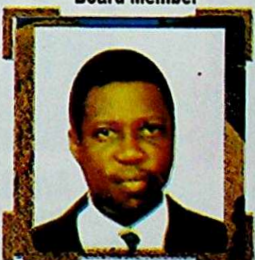
Chief S. O. Obembe.
Board Member



Hon. (Mrs.) Nike Esan
Board Member



Alh. Tijani Babalola
Board Member



Mr. S. O. Owoeye
Ex-Officio Member



Alh. Tayo Hassan
Ex-Officio Member

OSPDC MANAGEMENT TEAM



MRS. M. O. ADETOYE
GENERAL MANAGER



MR. O. A. AWOLODIRE
Deputy Director/HOD
(Finance & Establishments)



Rev. O. O. Olarewaju
Assistant Director/HOD
(Estate, Town Planning & Survey)



Arc O. O. Atoyebi
Chief Architect/HOD
(Works & Maintenance Dept.)

TABLE OF CONTENTS

<u>GOVERNMENT DEPARTMENTS</u>	<u>PAGE</u>
Government Ministries, Bureaux, Institutes and Commission	xii
Preface	xviii
Introduction	1
Corporation's Departments	3
Corporation's Estates	6
Development of the Estates	11
Achievements	16
Constraints of the Corporation & Plans for the future.	24
Consultancy and Contractual Services	25
Appeal to Customers of the Corporation	26
2010 Year Planner	27

STATE MINISTRIES, BUREAUX PARASTATALS AND COMMISSIONS

OFFICE OF THE GOVERNOR

Bola Ige House, New State Secretariat, Abere

a. **Office of the Secretary to the State Government**

- I (i) Bureau of General Services
- (ii) Bureau of Policy Co-ordination,
Political and Security
- (iii) Bureau of Parastatals
- (iv) Bureau of Cabinet and Protocol
- (v) Bureau of Special Duties
- II (i) Bureau of Computer Services
- (ii) Bureau of Public Procurement

b. **Office of the Head of Service**

- (i) Bureau of Establishment
and Training
- (ii) Public Service Office
- (iii) Bureau of Public Service Pension

MINISTRY OF INFORMATION AND WOMEN AFFAIRS

New Secretariat Complex,
P. M. B. 4422, Osogbo.

MINISTRY OF AGRICULTURE AND NATURAL RESOURCES

New Secretariat Complex,
P. M. B. 4424, Osogbo.

MINISTRY OF JUSTICE

New Secretariat Complex,
P. M. B. 4424, Osogbo.

MINISTRY OF LOCAL GOVERNMENT, COMMUNITY DEVELOPMENT AND CHIEFTAINCY MATTERS

New Secretariat Complex,
P. M. B. 4427, Osogbo.

**MINISTRY OF FINANCE AND
ECONOMIC DEVELOPMENT**
New Secretariat Complex,
P. M. B. 4424, Osogbo.

**OFFICE OF THE
ACCOUNTANT-GENERAL**
New Secretariat Complex,
P. M. B. 4430, Osogbo.

**OFFICE OF THE AUDITOR-GENERAL
(STATE)**
New Secretariat Complex,
P. M. B. 4429, Osogbo.

**OFFICE OF THE AUDITOR-GENERAL
(LOCAL GOVT.)**
New Secretariat Complex,
Gbongan Road, Osogbo

**MINISTRY OF COMMERCE,
INDUSTRY AND CO-OPERATIVE**
New Secretariat Complex,
P. M. B. 4419, Osogbo.

MINISTRY OF EDUCATION
New Secretariat Complex,
P. M. B. 4418, Osogbo.

**MINISTRY OF INFORMATION
AND COMMUNITY DEVELOPMENT**
New Secretariat Complex,
P. M. B. 4422, Osogbo.

MINISTRY OF WORKS AND TRANSPORT
New Secretariat Complex,
P. M. B. 4429, Osogbo.

MINISTRY OF HEALTH
New Secretariat Complex,
P. M. B. 4429, Osogbo.

HIGH COURT OF JUSTICE
P. M. B. 4327,
Ilobu Road, Osogbo.

**MINISTRY OF LANDS AND
URBAN DEVELOPMENT**
New Secretariat Complex,
P. M. B. 4430, Osogbo.

**OSUN STATE PROPERTY
DEVELOPMENT CORPORATION,
ILE-IFE**
Chairman (08038002225)
General Manager (08034734220)
Headquarters Office, Ile-Ife (08033828787)
Zonal Office, Osogbo. (08052367681)

**OSUN STATE CIVIL SERVICE
COMMISSION**
Old Governor's Office,
P. M. B. 4434, Osogbo.
Chairman
Permanent Secretary
Full time Commissioners

**MINISTRY OF WATER RESOURCES
AND RURAL DEVELOPMENT**
New Secretariat Complex,
P. M. B. 4422, Osogbo.

**OSUN STATE JUDICIAL
SERVICE COMMISSION**
c/o. High Court of Justice
Ilobu Road
Osogbo.

**OSUN STATE UNIVERSAL
BASIC EDUCATION BOARD**
Gbongan Road, P. M. B. 4424, Osogbo
Chairman
Executive Secretary.

**OSUN STATE TEACHING
SERVICE COMMISSION**
P. M. B. 4470, Osogbo.
Old Ministry of Agriculture and
Natural Resources, Ilobu Road, Osogbo.
Chairman
Executive Secretary.

**OSUN STATE LOCAL GOVERNMENT
SERVICE COMMISSION**
New Secretariat Complex,
P. M. B. 4410, Osogbo.
Chairman
Executive Secretary

**OSUN STATE HOSPITALS
MANAGEMENT BOARD**
New Secretariat Complex,
P. M. B. 4366, Osogbo
Chairman
Permanent Secretary

**OSUN STATE STAFF HOUSING
LOAN BOARD**
New Secretariat Complex,
P. M. B. 4438, Gbongan Road, Osogbo.
Chairman.

OSUN STATE LOCAL GOVERNMENT
HOUSING LOANS BOARD
Old Governor's Office, Osogbo
Chairman

OSUN STATE BROADCASTING
CORPORATION
Ile - Awiye, Oke Baale, Osogbo.
Chairman
Director - General

OSUN STATE AGRICULTURAL
DEVELOPMENT CORPORATION
c/o Old Ministry of Agriculture
and Natural Resources Premises
Ilobu Road, P. M. B. 4430, Osogbo
General Manager
Director of Finance & Administration .

OSUN STATE AGRICULTURAL
DEVELOPMENT PROGRAMME
Aawe Road, Iwo
Programme Manager

OSUN STATE WATER
CORPORATION
New Secretariat Complex, Osogbo
Chairman
General Manager

OSUN STATE ENVIRONMENTAL
PROTECTION AGENCY
Old Governor's Office, Gbongan Road, Osogbo
Chairman
General Manager
Secretary

**OSUN STATE PILGRIMS
WELFARE BOARD (CHRISTIAN WING)**
New Secretariat Complex,
P. M. B. 4417, Osogbo

**OSUN STATE PILGRIMS
WELFARE BOARD (MUSLIM WING)**
New Secretariat Complex,
P. M. B. 4417, Osogbo

**OSUN STATE COUNCIL
FOR ARTS AND CULTURE**
Tennis Ground,
Kurun Road, Osogbo

**OSUN STATE CAPITAL
DEVELOPMENT AUTHORITY**
Secretariat, Gbongan Road,
Osogbo
Chairman

**OSUN STATE INVESTMENT
COMPANY LIMITED**
Old State Secretariat,
Gbongan Road, Osogbo
Chairman

**LIVING SPRINGS SAVINGS &
LOANS COMPANY LIMITED**
Old Governor's Office
Gbongan Road, Osogbo
General Manager

**REALITY TELEVISION
IBADAN ROAD
IWO**
Chief Executive Officer

FOREWARD

Our Board came into office in September, 2007. Our mandate is to increase the housing stock in Osun State substantially.

In the following paragraphs, our modest achievements were enunciated.

It is pertinent to state that infrastructural facilities remained the major problem in the various Estates. Lack of basic infrastructural facilities hindered allottees from making use of their plots to develop their plots. It also makes the Estates not conducive to good living. The global economic meltdown which affected all spheres of our country's socio-economic life does not help the matter. Nevertheless, my Board is resolved to tackle the problem with a view to ameliorate them.

Another major problem is the non-payment of compensation to the original land owners of some of our Estates. Since we came on Board, our Corporation in conjunction with the State Ministry of Lands and Urban Development had identified the problems. Efforts are on hand to do the Crop Enumeration and Valuation of Existing Structures on the Estates with a view to paying compensations to the original land owners. With the payment of compensation, our Corporation would have unhindered access to the Estates.

A lot of progress was made in the allocation of Residential, Commercial and Industrial plots to allottees to build houses of their choices in all Estates.

In the coming years, the Corporation will strive to achieve its mandate to the good people of Osun State.

Signed

Alhaji Kamorudeen B. Adekunle
Chairman.

CHAPTER 1

INTRODUCTION

1.1. Osun State Property Development Corporation was established following the creation of Osun State on 27th August, 1991. The Edict which established the Corporation was formally signed into Law on 31st April, 1991 with retrospective effect from inception

1.2. The objectives of the Corporation include:

(i) Development of Estates in various parts of the State especially the provision of Sites and Services for Residential, Industrial, Public and other Public purposes;

(ii) Provision of modern dwelling houses at reasonable cost for sale to members of the public;

(iii) Construction of Office and Commercial buildings for letting to members of the public;

1.3. The objectives and functions of the Corporation are carried out through three Departments. The Departments are:

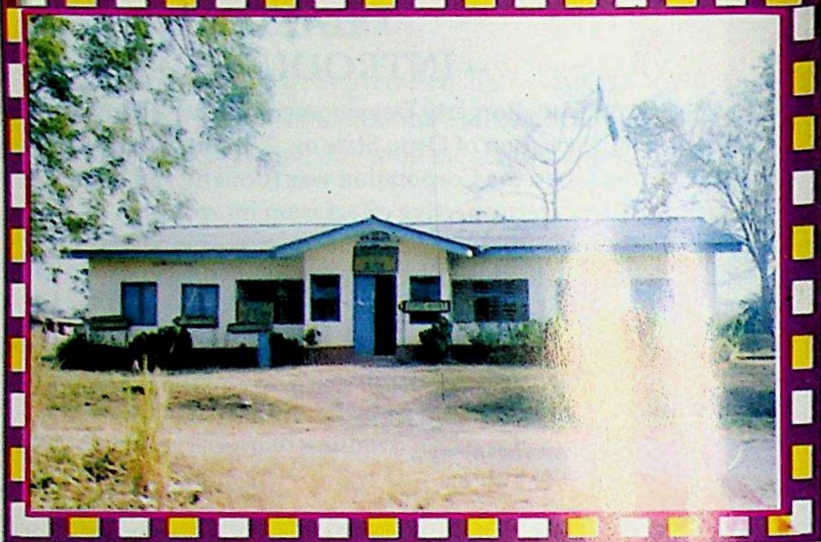
- (a) Finance and Establishments;
- (b) Estate, Town Planning and Survey; and
- and © Works and Maintenance

1.4 There are three other Units directly reporting to the General Manager. These are:

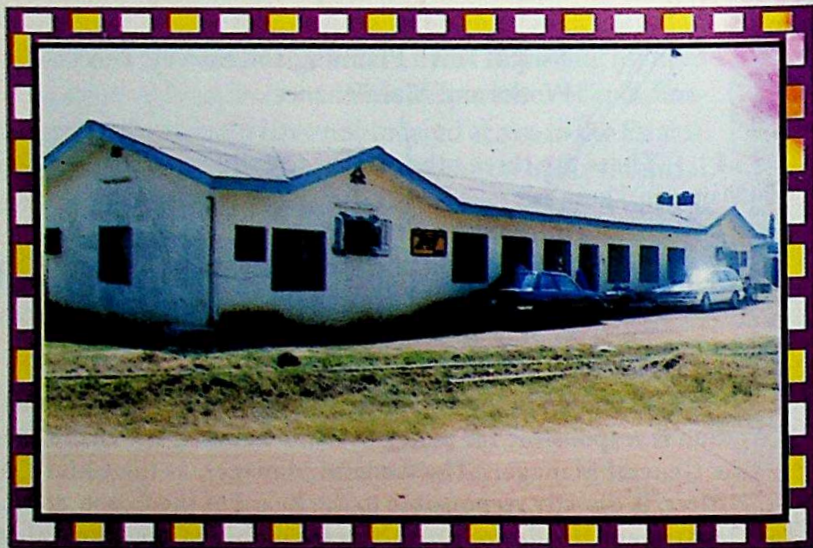
- (a) Internal Audit Unit;
- (b) Information and Public Relations Unit;
- and © Legal Unit

2.0 Organization of the Corporation

As shown in the Organizational Chart, the Board of the Corporation is responsible for policy decision making, which are executed by the General Manager. The General Manager, as the Chief Executive Officer, is directly responsible to the Board of the Corporation. All the Department Heads are directly responsible to the General Manager. Each Departmental is headed by a Director. The General Manager and all Heads of Departments (HODs) constitute the Management team of the Corporation.



**Main Administrative Building, Headquarters Office
Ile - Ife**



Administrative Block, Zonal Office Osogbo.

CHAPTER 2

CORPORATION'S DEPARTMENT

2.1. Finance And Establishments Department

2.1.1. The Finance and Establishments Department is made up of two main divisions.

These are:

- (i) Finance Division;
- (ii) Establishments Division,

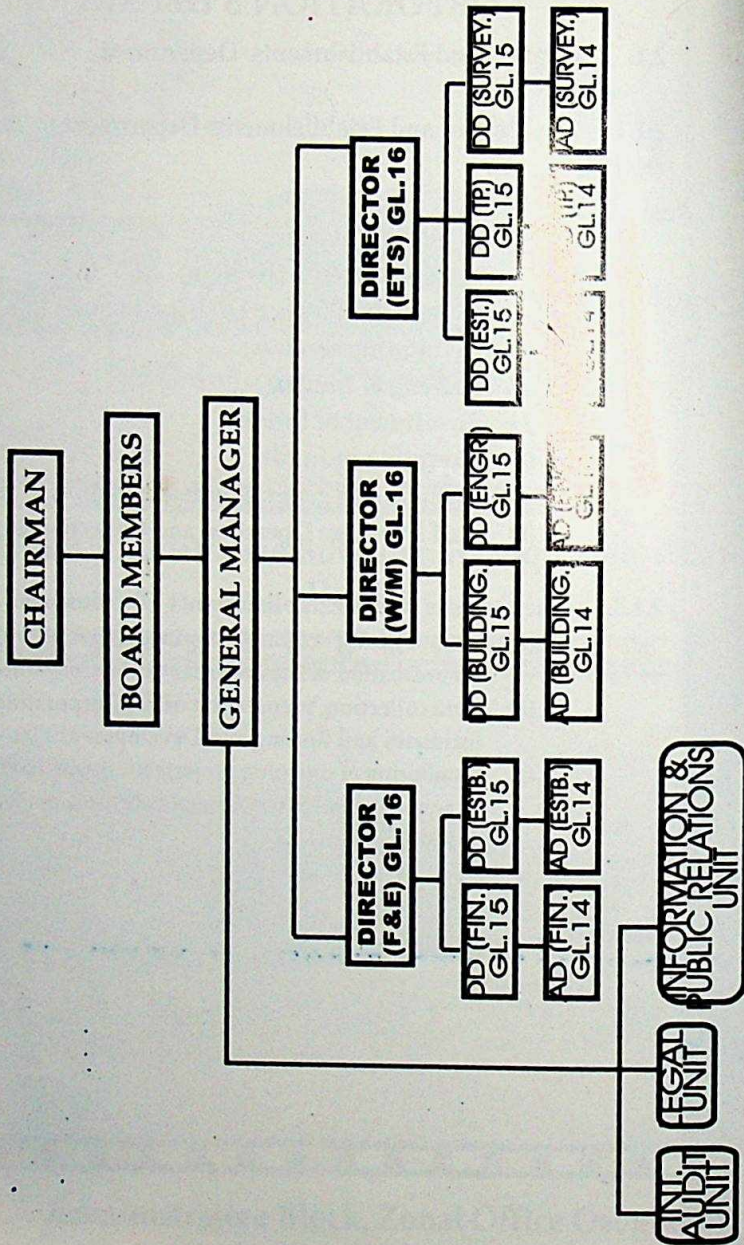
2.1.2. The services of the Finance Division include

- (a) Accounting services;
- (b) Raising of funds;
- (c) Investment of funds;
- (d) Execution of funds,
- (e) Execution of general policies relation to finance;
- (f) Staff Mortgage Operation and Collection of Ground Rents.

2.1.3. The services of the Establishments Division are:

- (a) General and Personnel Administration, as well as co-ordination of the activities of the Corporation;
- (b) Data collection, preparation of the Corporation's Annual Estimates and Rolling and Development Plans;
- © Monitoring of on-going projects to ensure that they are executed in accordance with the Annual Estimates or Development Plans or Rolling Plans.

OSUN STATE PROPERTY DEVELOPMENT CORPORATION ORGANIZATION CHART



2.1.4. Sources of Finance

The sources of finance open to the Corporation include:

- (i) Grant from the State Government;
- (ii) Loan from Government and Finance Institutions;
- (iii) Revenue earned on the Corporation's assets;
- (iv) Sale of houses and plots to members of the public;
- (v) Rent from the Corporation's earth moving equipment like D8K Bulldozer, 140G Motor Grader, Earth Roller, etc.
- (vi) Profit from services to other agencies
- (vii) Profit from sale of cement;
- (viii) Other miscellaneous sources.

2.2. Estate, Town Planning and Survey Department

The Department comprises of the following:

- (i) Estate Division which is responsible for the acquisition, management and allocation of land and houses. It also handles the Staff Mortgage Scheme and prepares Valuation and Feasibility Reports.
- (ii) Town Planning Division which is responsible for Development Control, Plan Approval and Physical Planning; and
- (iii) Survey Division which is responsible for Survey Works on the Estates.

2.3. Works and Maintenance Department

2.3.1. The Works Division is responsible for:

- (i) The Design and Construction of Projects;
 - (ii) Provision of Infrastructural Facilities;
- and (iii) Maintenance Services within the Estates.

2.4. Other Units

2.4.1. The Internal Audit Section

The Internal Audit Section sees to continuous internal control of the accounts and records of revenue, expenditure and store.

2.4.2. The Public Relations Section

The Public Relation Section is responsible for Presenting a good image of the corporation; it also provide and produce relevant information materials for members of the public.

2.4.3. Legal Section

The Legal Section is responsible for all legal matters affecting the Corporation



CHAPTER 3 CORPORATION'S ESTATES

3.1. Functional Estates

3.1.1. The Corporation inherited nineteen (19) Estates from the old Oyo State. Some of the Estates, which are located in all the six Administrative Zones of Osun State include Oroki Estate, Osogbo; Moremi Estate, Ile-Ife and Ajaka Estate, Ilesa. Others are Agunbe Estate, Ikirun; Akoda Estate, Ede; Oluwo Estate, Iwo; Ile-Ogbo Estate, Ile-Ogbo; Olufi Estate, Gbongan; Owa Ooye Estate, Imesi-Ile; Ipetumodu Estate Ipetumodu; Owamiran Estate, Esa-Oke; Aiyegunle Estate, Ode-Omu, etc. The Estates are designed to cater for Residential, Commercial and Industrial purposes.

3.1.2. At the time Osun State was created. Only Oyo Estate, Osogbo; Moremi Estate, Ile-Ife and Ajaka Estate, Ilesa were functional with some form of development. However, at present ten additional Estates are now functional. This means that some form of activities like surveying of plots, provision of infrastructural facilities especially construction of drainage, opening up of roads, provision of electricity, provision of water and so on, are going on. In fact, people are already living in some of the Estates.

The additional eight functional Estates are:

- (i) Agunbe Estate, Ikirun;
- (ii) Owa Ooye Estate, Imesi-Ile;
- (iii) Akoda Estate, Ede;
- (iv) Olufi Estate, Gbongan;
- (v) Oluwo Estate, Iwo;
- (vi) Ile-Ogbo Estate, Ile-Ogbo;
- (vii) Oroki Estate Extension, Osogbo;
- (viii) Aiyegunle Estate, Ode-Omu
- (ix) Owamiran Estate, Esa-Oke (132,94 hectares)
- (x) Ipetumodu Estate, Ipetumodu; (176,400 hectares)
- (xi) Okinni Estate, Okinni (80,300 hectares)
- (xii) Okuku Estate, Okuku (20,017 hectares)

3.1.3 Each of these functional Estates has provision for Residential, Industrial, Commercial (Shops, Warehouses, Office, e.t.c.), Public use (Schools, hospitals, police posts e.t.c) and recreational facilities.

3.1.4 The Land Bank value of the Corporation was about Four Billion Naira (₦4.0 billion) as at the 2009 valuation exercise

3.1.5 In order to realize the great potentials of the Estates and revenue accruable on the sale of lands, certain facilities need to be put in place.

3.1.6. At present, compensation had only been paid to the original land owners at Oroki Estate, Osogbo; Oroki Estate Extension, Osogbo; Akoda Estate, Ede; Moremi Estate, Ile-Ife and Ajaka Estate, Ilesa. The inability to pay compensation to the original land owners of the other Estates is a major constraint. Moreover, majority of the Estates lack the basic infrastructural facilities like roads, water, electricity, etc. to make for conducive living of the allottees of the houses and plots. However, the Corporation has embarked on steady provision of some infrastructural facilities on few of the Estates in recent years.

3.1.7. In summary, the following points are of immense importance:

- (i) Majority of the Estates lack basic infrastructural facilities like roads, water, electricity and telephone,
- (ii) The Corporation lack sound revenue base from where fund for the provision of these facilities could be sourced,
- (iii) It is uneconomical to finance provision of these infrastructural facilities from loans because the allottees, who are mostly civil servants, cannot support what will be the resultant economic charges on these land if the cost of providing these facilities have to be passed to public buyers of the land.

3.1.8 Availability of infrastructural facilities will encourage more buyers and developers while increase in demand will ensure availability of fund for further expansion, investment and development.

3.1.9. The Corporation therefore requires the assistance of Government to pay compensation to the original land owners of the acquired Estates and to provide infrastructural facilities in them.

J.2. The plot analysis of the functional Estates are as follows :

3.2.1. Oroki Estate, Osogbo (139.92 hectares)

The Estate was acquired in 1975. It covers an area of 139.61 hectares and it is designed for Residential, Commercial and Industrial purposes. The Estate is planned to accommodate the following:

No of Residential Plots	-	362
No of Industrial Plots	-	39
No of Commercial Plots	-	21
No of Public and Semi-public Uses	-	<u>7</u>
Total		<u>429</u>

3.2.2. Moremi Estate, Ile-Ife (65 hectares)

Moremi Estate, Ile-Ife, a mainly Residential and Commercial Estate with a total area of 65 hectares, was acquired in 1976. It has the following land use provisions:

No of Residential Plots	-	313
No of Commercial Plots	-	20
No of Public and Semi-public Uses	-	<u>6</u>
Total		<u>339</u>

3.2.3. Ajaka Estate, Ilesa (340.51 hectares)

The Estate is designed as a Residential/Commercial/Industrial Estate. It has the following provisions:

No of Residential Plots	-	776
No of Industrial Plots	-	66
No of Commercial Plots	-	22
No of Public and Semi-public Uses	-	<u>8</u>
Total		<u>872</u>

3.2.4. Agunbe Estate, Ikirun (35.51 hectares)

The area of the Estate is 35.51 hectares. The Estate is designed to accommodate Residential, Commercial, Open space, Public and Semi-Public uses. The break down is as follows:

No of Residential Plots	-	154
No of Commercial Plots	-	6
No of Public and Semi-public Uses	-	<u>8</u>
Total		<u>168</u>

3.2.5. Akoda Estate, Ede (245.259 hectares)

The site covers an area of 245.259 hectares. It offers the following land use provisions:

No of Residential Plots	-	851
No of Industrial Plots	-	77
No of Commercial Plots	-	74
No of Public and Semi-public Uses	-	<u>12</u>
Total		<u>1,014</u>



3.2.6. Owa Ooye Estate, Imesi-Ile (32.042 hectares)

The Estate has an area of 32.042 hectares. The following are available on the Estate.

No of Residential Plots	-	65
No of Commercial Plots	-	5
No of Public and Semi-public Uses	-	<u>2</u>
Total		<u>72</u>

3.2.7. Ile-Ogbo Estate, Ile-Ogbo (216.779 hectares)

The area of the Estate is 216.779 hectares. The Estate provides the following

No of Residential Plots	-	697
No of Industrial Plots	-	45
No of Commercial Plots	-	52
No of Public and Semi-public Uses	-	<u>21</u>
Total		<u>815</u>

3.2.8. Olufemi Estate, Gbongan (271.69 hectares)

The area of the Estate is 271.69 hectares. The Estate offers the following uses:

No of Residential Plots	-	1,040
No of Industrial Plots	-	75
No of Commercial Plots	-	94
No of Public and Semi-public Uses	-	<u>15</u>
Total		<u>1,224</u>

3.2.9. Oluwo Estate, Iwo (200.963 hectares)

The area of the Estate is 200.963 hectares. The Estate offers the following provisions:

No of Residential Plots	-	407
No of Industrial Plots	-	22
No of Commercial Plots	-	18
No of Public and Semi-public Uses	-	<u>14</u>
Total		<u>461</u>

3.2.10. Oroki Extension, Osogbo (48.80 hectares)

The area of the Estate is 48.80 hectares. The Estate offers the following land use provisions:

No of Residential Plots	-	258
No of Commercial Plots	-	29
No of Public and Semi-public Uses	-	<u>6</u>
Total		<u>293</u>

3.2.11. Aiyegunle Estate, Ode-Omu (289.979 Hectares.)

The total area of the Estate is 289.979 hectares. It has the following uses:

No of Residential Plots	-	967
No of Industrial Plots	-	71
No of Commercial Plots	-	50
No of Public and Semi-public Uses	-	1
Total		<u>1,089</u>

3.2.12. Owamiran Estate, Esa-Oke (132.940 hectares)

The area of the Estate is 132.940 hectares. It is comprised of the following uses:

No of Residential Plots	-
No of Industrial Plots	-
No of Commercial Plots	-
No of Public and Semi-public Uses	-
Total	

3.2.13. Ipetumodu Estate, Ipetumodu (176.00 hectares)

Ipetumodu Estate has a total area of 176.00 hectares. It offers the following land uses:

No of Residential Plots	-	571
No of Industrial Plots	-	38
No of Commercial Plots	-	20
No of Public and Semi-public Uses	-	12
Total		<u>641</u>

3.2.14. Okuku Estate, Okuku 20.017 hectares)

Okuku Estate, Okuku has a total area of 20.017 hectares. It has the following uses:

No of Residential Plots	-	84
No of Industrial Plots	-	11
No of Commercial Plots	-	9
No of Public and Semi-public Uses	-	1
Total		<u>105</u>

3.2.15. Okinni Estate, Okinni (80.300 hectares)

The area of the Estate is 80.300 hectares. It is comprised of the following uses:

No of Residential Plots	-	280
No of Industrial Plots	-	36
No of Commercial Plots	-	28
No of Public and Semi-public Uses	-	3
Total		<u>347</u>



DEVELOPMENT OF THE ESTATES

4.1.1. Provision of Infrastructural facilities:

For easy access to allocated plots and most importantly for allottees to live comfortably, the Corporation takes the provision of infrastructural facilities as a priority. The Corporation could not do much on the provision of the facilities as a result of inadequate funds. However, efforts are being made to provide basic facilities like drainage, earth roads, water and electricity, at least in the functional estates. The efforts made in this regard are as follows:

4.1.2. Oroki Estate, Osogbo.

Water and electricity have been provided for the built-up areas of the Estate. While the roads in the Estate have been opened up for easy access to allocated plots. From time to time, the roads were graded for easy mowing. Drainages were built in some areas to stem the tide of storm water flooding the houses of residents. In year 2009, the State Government promised to tar 10.91 Kilometres of roads in the Estate. The asphalt paving of the roads is for start from Demystly Petrol Station on Ilesha Road Round-about to burst out at the Osogbo Grammar School and of Oroki Estate on Ibadan/Iwo Road. Some internal roads are also included in the 10.91 kilometres to be tarred. Tarring of the road could not materialise yet because of the global economic meltdown. The Corporation is still optimistic that Government will still tar the road.

4.1.2. Moremi Estate, Ile-Ife.

Electricity and water have been provided to the built-up areas of the Estate. Recently, all the roads in the built-up areas of the Estate were graded while new roads were opened up for allottees to gain access to their plots for development to start on the allocated plots.

4.1.3. Ajaka Estate, Ilesa.

Concrete drains and earth roads have been provided for the built-up areas of the Estate. More roads are being opened up for allottees to gain access to their plots with a view to developing them.

4.1.4. Owa-Ooye Estate, Imesi-Ile.

The Estate roads have been opened up for the allottees to gain access to their plots.

4.1.5. Agunbe Estate, Ikirun.

Electricity has been supplied to the built-up areas of the Estate. Some roads in the built-up areas were graded while new ones were opened up for allottees to gain access to their plots for development.

4.1.6. Akoda Estate, Ede.

- (a) The area covered by Phase 1 of the Estate (Prince Olgunsoye Oyinlola workers' Village, at Akoda Estate Ede) had been provided with the following facilities:
 - (i) Concrete drains and earth roads
 - (ii) Electricity Supply and Water supplies

- (b) Earth roads were provided for the areas covered by Phases II and III of the Urban Housing Scheme on the Estate while water and electricity could be easily tapped from the phase I area because of their close proximity.
- (c) In other parts of the Estate, some roads have been opened up with a view to allowing the allottees of plots there have access to their plots.

4.2. **Housing Development**

Since the inception of the Corporation in 1991, the Corporation has intensified efforts to increase the housing stock in the State

4.2.1. **Oroki Estate, Osogbo.**

(A) **Direct Provision of Houses**

The 50 Nos. 2,3 and 4-bedroom low cost houses built on the Estate have been fully allocated to interested members of the public several years ago. The Corporation also built 4 Nos. 3-bedroom bungalows for the State Government, specifically for the widows of Military officers of Osun State origin that died in the Ejigbo-Lagos Military Air Disaster of 1992.

(B) **Indirect Provision of Houses.**

All the residential plots in the Estate have been fully allocated and most of the allottees have developed them and are already living in the houses.

4.2.2. **Moremi Estate, Ile-Ife.**

(A) The 50 Nos. 2,3 and 4 bedroom low cost bungalows in the Estate built by the Corporation have since been fully allocated to interested member of the public.

(B) **Indirect Provision of Houses**

The remaining five (5) plots on the Estate was allocated in the last one year. All the Commercial plots on the Estate have been allocated. Some of the plots have been developed and presently occupied by the owners.

4.2.3. **Ajaka Estate, Ilesa.**

(A) **Direct Provision of Houses**

The 44 Nos. 2,3 and 4 bed-room bungalows built on the Estate have been fully allocated to interested buyers.

(B) **Indirect Provision of Houses**

Ajaka Estate, Ilesa is the biggest of the Corporation's Estates. Fourteen (14) Nos. out of the remaining Residential plots, 14 Nos. out of the remaining Commercial plots and seven (7) out of the remaining industrial plots, were allocated in 2009. Some of these plots have been developed and are being occupied at present.

4.2.4. Akoda Estate, Ede

(A) Direct Provision of Houses

At the Prince Olagunsoye Oyinlola Workers' Villages, Akoda Estate, Ede three (3) phases of the Urban Housing Scheme were completed.

(a) Under Phase I of the programme, 31 Nos. housing units were built. This is made up of 24 Nos. 2-bedroom semi-detached and 7 Nos. 3-bedroom detached bungalows. All the houses have been fully allocated to interested Civil Servants and members of the public.

(b) Under Phase II of the Scheme, 6 Nos. housing units were completed. This comprises 2 Nos. 2-bedroom and 3 Nos. 3-bedroom detached bungalows. All the houses have been fully allocated to interested buyers.

(c) Under Phase III of the Schemed, 6 Nos. bungalows have been completed. The six units are made up of 3 Nos. 3-bedroom detached and 3 Nos. 2-bedroom detached bungalows. The houses have been allocated to applicants on the waiting list. Interested buyers are already depositing for the houses to be built under Phase III of the Scheme

Public-Private Partnership Initiative In Housing Development

The Corporation is into a Joint Venture Agreement with a Private Company, Collins Crown Ltd. The Company has been allocated 22.221 hectares of land with which to build 200 units of 2,3 and 4-bedroom bungalows as stated in the Memorandum of Understanding (MoU) signed with the Company. At present, the construction of 20 Nos. 3-bedroom detached bungalows had started on the site, and were at lintel levels. On completion, the Company is to market the houses while profit will be shared as agreed in the MoU,

(c) Construction of Houses with Interlocking Bricks

- ▼ (i) Recently, the Corporation purchased an Hydraform Interlocking Brickmaking Machine from its Internally Generated Revenue. The Hydraform Technology from South Africa is to produce interlocking bricks for housing construction in Osun State. This machine was launched recently by Her Excellency, the Deputy Governor of Osun State, Erelu Olusola Obada on behalf of His Excellency, the Executive Governor, Prince Olagunsoye Oyinlola at Akoda Estate, Ede. This technology will use mainly laterite mixed with a small quantity of cement to produce interlocking bricks. The use of interlocking bricks has been adjudged to reduce the cost of building construction by 20%. The Government promised to release a capital grant of N35.0m to the

Corporation for the construction of 2 and 3 bedroom bungalows with interlocking bricks.



Hydraform Interlocking Brickmaking Machine *(Purchased from the Corporations IGR)*

4.2.5. Owa- Ooye Estate, Imesi-Ile

3 Nos. uncompleted 2-bedroom low cost bungalows built on the Estate have been allocated to interested buyers "as they were" for completion by the allottees.

4.2.6. Oluwo Estate, Awe Road, Iwo

24 Nos. uncompleted 2,3 and 4-bedroom bungalows were built on the Estate. Some of these houses have been allocated to buyers "as they were"

4.2.7.. Aiyegunle Estate, Ode-Omu

14 Nos. uncompleted low cost bungalows on the Estate have been allocated to buyers "as they were" for completion and occupation.

4.2.8. Owamiran Estate, Esa-Oke.

5 Nos. 2-bedroom uncompleted low cost bungalows were at different stages of completion on the Estate. Few of these houses have been allocated "as they were" for completion by the allottees.



4.2.9. Olufi Estate, Gbongan.

24 Nos. 2-bedroom uncompleted bungalows were at various stages of completion. Some of these houses have been allocated to interested buyers "as they were" for completion and occupation

CORPORATION ESTATES WITH THE NUMBER OF PLOTS AVAILABLE

S/NO	ESTATES	LOCATION	AREA (HA)	NO RES.	OF COMD.	PLOTS IND.	PUR. & S.P.	NO OF HOUSES	REMARKS
1	Oro	Ogbo	39.9	362	21	29	7	57	Plots fully allocated
2	Ajale	Ibeja	340.510	776	22	66	8	44	Plots available
3	Morogbo	Ile-Ife	65.000	313	20	-	6	50	Plots fully allocated
4	Ake	Ibeja	245.259	851	74	77	12	-	Plots available
5	Oro	Ibeja	48.800	258	29	-	6	-	Plots fully allocated
6	Ajale	Ibeja	45.51	154	16	-	4	-	Plots available
7	Olufi	Gbongan	274.690	1040	94	75	15	16	Plots/Un. Houses available
8	Owa-Ooye	Imesi-Ile	32.042	65	5	-	2	3	Plots available
9	Ile-Ogbo	Ile-Ogbo	216.779	697	52	45	21	14	Plots/Un. Houses available
10	Oluwo	Iwo	200.963	407	18	22	14	22	Plots available
11	Aiyegunle	Ode-Omu	289.979	967	71	50	-	14	Plots available
12	Owamiran	Esa-Oke	132.940	456	46	30	-	5	Plots/Un. Houses available
13	Ipetumodu	Ipetumodu	176.400	571	38	20	12	-	Plots available
14	Okinni	Okinni	80.300	280	36	28	3	-	Plots available
14.	Okuku	Okuku	20.017	84	11	9	1	-	Plots available

CHAPTER 5

ACHIEVEMENTS

5.1. Acquisition of lands and Compensation to Original Land Owners

5.1.1. The Corporation has acquired land in various parts of Osun State for development into Estates. The Corporation is working to perfect the acquisition of the land acquired for Agunbe Estate, Ikirun; Owa Ooye Estate, Imesi-Ile; Aiyegunle Estate, Ode-Omu; Owamiran Estate, Esa-Oke; Olufi Estate, Gbongan; Oluwo Estate, Iwo; Ile-Ogbo Estate, Ile-Ogbo; Okuku Estate, Okuku and Okinni Estate, Okinni. The Acquisition Notices for some of these Estates had been published in the National Newspapers.

5.1.2. Crop Enumeration and Valuation of Structures has been carried out at Olufi Estate Gbongan with a view to paying compensation to the original land owners. As soon as the quantum of compensation payable is known, the original land owners will be paid. Also, the crop enumeration and valuation of existing structures at Owamiran Estate, Esa-Oke had commenced. Payment of compensation to land owners ensures unhindered access to the Estates so settled.

5.2. Allocation of Plots and Houses

5.2.1. Between 2003 and February, 2010, the Corporation had allocated 678 Residential Plots, 138 Commercial Plots and 67 Industrial Plots.

5.2.2. Between the same period, the Corporation allocated (7) units of uncompleted 2,3 and 4-bedroom bungalows on the Estate of the Corporation. Some of these houses were allocated to the allottees "as they were" for completion. Also, the 43 urban houses constructed at Akoda Estate Ede, have been fully sold to interested buyers.



5.2.3. The details of the plots and houses allocated within the period are analyzed below:

TABLE SHOWING ALLOCATION OF PLOTS AND HOUSES
2003 TO FEBRUARY, 2010.

S/NO	ESTATE	RESIDENTIAL PLOTS	COMM PLOTS	INDUSTRIAL PLOTS	HOUSES
1	Oroki,	1	12	17	-
2	Oroki Extension, Osogbo	26	5	2	-
3	Morogbo, Ile-Ife	94	5	-	-
	Ajaka, Esa	67	31	8	-
	Ajaka, Kirun	34	5	-	-
	Ajaka, Ede	384	72	35	43
	Oyinduro, Imesi-Ile	22	-	-	1
	Oyinduro, Esa-Oke	2	-	-	1
	Oyinduro, Iwo	11	3	2	4
	Oyinduro, Ile-Ogbo	-	-	1	-
	Oyinduro, Ebongan	10	1	-	1
	Ajaka, Ode-Omu	17	-	-	-
13	Okuku, Okuku	10	4	2	-
	TOTAL	678	138	67	50

5.3. Construction of Houses

5.3.1. There is shortage of residential accommodation in the urban areas of Osun State especially in Osogbo, the State Capital and the university town of Ile-Ife. As a result of this, some workers still commute from towns in neighbouring States to work at Osogbo, Osun State Capital.

5.3.2. To alleviate the shortage of accommodation in the State, the Corporation, with the assistance of the State Government, was able to achieve the following in the very recent past:

(i) Direct Provision of Houses

(a) So far Corporation had built 43 units of 2 and 3-bedroom bungalows at the Prince Olagunsoye Oyinlola Workers Vilages, Akoda Estate, Ede. These houses have been allocated to interested Civil Servants and members of the public.

(b) Also, the Corporation's business partner under the Public-Private - Partnership Initiative in Housing Development has started the construction of 20 Nos. 3-bedroom bungalows out of the 200 housing units agreed to be constructed under the Memorandum of Understanding (MoU) signed with the Company. These houses are at present at lintel level and will be completed to add to the housing stock in the State.

5.3.3.. In year 2009 alone 179 plots comprising 130 residential plots, 39 commercial plots and 10 industrial plots were allocated to interested buyers. The breakdown is as follows:



**BLOCKMAKING INDUSTRY AT MOREMI ESTATE, ILE-IFE
PLOT ALLOCATED IN YEAR 2009.**

No	ESTATES	RES.	COMM	IND.	TOTALPLOTS	HOUSES
1	OROKI, ESTATE. (OLD) OSOGBO	-	-	-	-	
2	OROKI EXTENTION, OSOGBO	-	3	-	3	
3	AKODA ESTATE, EDE	72	22	1	95	6
4	MOREMI ESTATE, ILE-IFE	5	-	-	5	-
5.	AJAKA ESTATE, ILESA	14	14	7	35	-
6	AIYEGUNLE ESTATE, ODE-OMU	10	-	-	10	-
7	OWA-OOYE ESTATE, IMESI-ILE	5	-	-	5	-
8	OLUFI ESTATE, GBONGAN	-	-	-	1	1
9	OLUWO ESTATE, IWO	5	-	2	9	2
10	OKUKU ESTATE, OKUKU	2	-	-	2	-
	TOTAL	130	39	10	182	9

5.4. Plan Approval:

5.4.1. By the Enabling Law, the Corporation has planning powers on its Estates. In this connection, between 2003 and February, 2010, 178 Nos. Building Plans were approved on the Corporation's Estates at Oroki, Osogbo; Oroki Extension, Osogbo; Moremi, Ile-Ife; Ajaka, Ilesa; Agunbe, Ikirun; Akoda, Ede; Aiyegunle, Ode-Omu and Owa-Ooye, Imesi-Ile where various plots have been allocated.

5.5. Blockmaking Industry

5.5.1. To improve the Internally Generated Revenue of the Corporation, two (2) Blockmaking Industries were established at Ile-Ife and Osogbo. These industries were functioning and were producing different sizes of blocks in commercial quantities. The Blockmaking Industries serve the estates on the Estates of the Corporation and members of the public who could obtain quality blocks at reasonable prices. These industries are contributing to the Internally Generated Revenue of the Corporation. Recently, the block making industry at Osogbo extended its services to Akoda Estate, Ede to serve the Corporation and the business partner of the Corporation under Public-Private Partnership (PPP) Initiative in Housing Development.

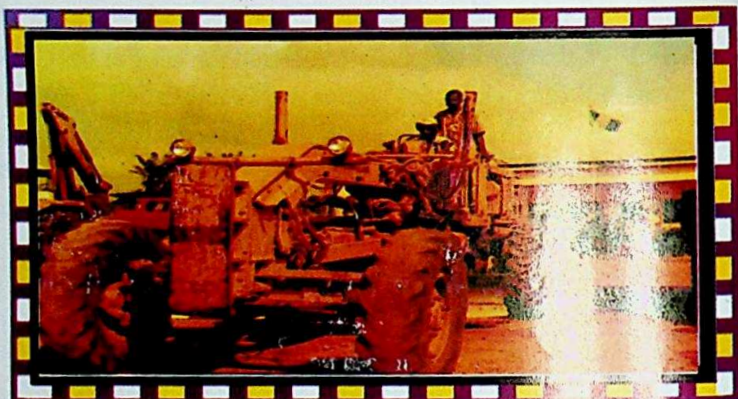


BLOCKMAKING INDUSTRY AT OROKI ESTATE, OSOGBO



D8K BULLDOZER
(Available for rent by members of the public)





140G MOTOR GRADER
(Available for rent by Members of the Public)



BLACKWOOD HODGE ROLLER
(Available for Rent by Members of the Public)

5.6. Development of Shopping Complexes

As part of its mandate, the Corporation is into the development of Shopping Complexes in the State to solve the problem of shortages of shopping units for the citizens of Osun State. Already, the Corporation has developed a block of 18 shopping units at Ilobu Road and another two (2) blocks of fifteen (15) shops Opposite Osogbo Grammar School end of Oroki Estate, Osogbo.



A Block of Shopping Units
at the Osogbo Grammar School End of Oroki Estate Osogbo.



A Block of Shopping Units
Along Ilobu Road, Oroki Estate, Osogbo

5.7. Students' Village

5.7.1. It is the plan of the Corporation to start the development of Students' Hostels to solve the problem of accommodation for students of tertiary institutions in Osun State. The Corporation has completed a Students' Hostel of the Osun State College of Technology (OSCOTECH) on the Corporation's Owamiran Estate along Esa-Odo Road, Esa-Oke

5.8. CONTRACTUAL AND CONSULTANCY SERVICES

5.8.1. As part of the Corporation's Internally Generated Revenue drive, the Corporation provides contractual and consultancy services for the State Government, its agencies and the public. These services are:

- (i) Architectural and Structural design for all types of Building Structure;
- (ii) Feasibility Report and Property Valuation;
- (iii) Management of Real Estate including Property Letting, Leasing;
- (iv) Preparation, Processing and Registration of Lease and Mortgage Agreements, Certificate of Occupancy Letter of Consent;
- (v) Town and Country Planning Master Plan, Composite Site Plan, Layout Plan, Block Plan and Urban/Rural Development Schemes;
- (vi) Building Construction and Supervision.
- (vii) Supervision and Maintenance of Infrastructural Facilities, i.e Road Drains, Water Pipes, etc.
- (viii) General Maintenance of Properties and its Surroundings, Landscaping of Playground, Parks, Open Space and Other Improvements in Private Residential Estates.

5.8.2. Since the creation of the State, the Corporation had enjoyed a lot of patronage from the State Government, In the last one year, the Corporation had undertaken the following assignments for the State Government:

- (i) Renovation of the Revenue Office at Ikirun.
- (ii) Reconstruction of the Perimeter Fence of Osun State Broadcasting Corporation, Okebaale, Osogbo.
- (iii) Renovation of the Structures and Other Facilities at the State Library Complex, Okefia, Osogbo.
- (iv) Presently, the Corporation is handling a direct labour contract for the proposed College building for Osun State University, Ipetu-Ijesha Campus, Ipetu-Ijesha. The direct labour contract will be completed soon.



Headquarters Office of Living Springs Savings and Loans Limited, Osogbo
(A project constructed by the Corporation for Osun State Government)

5.9. Personnel Matters

5.9.1. The staff strength of the Corporation at present is seventy-eight (78) distributed among the following Departments. Viz: Works and Maintenance; Estate, Town Planning and Survey; and Finance and Establishments.

5.10. Staff Welfare

5.10.1. **Staff Mortgage:** The Corporation operates a staff Housing Loan Scheme. More than 47 members of staff had benefited from the scheme. In year 2009 alone, four (4) members of staff of the Corporation were granted housing loan ranging from N150,000 up to a maximum of N350,000 for each of them.



CHAPTER SIX
CONSTRAINTS OF THE CORPORATION
AND PLANS FOR THE FUTURE

6.1.0 CONSTRAINTS

- 6.1.1. Finance is the major constraint facing the Corporation. The Corporation is, however, determined to improve its internally Generated Revenue (IGR) to improve its finance.
- 6.1.2. Lack of manpower especially professional, technical and administrative cadre is another major problem facing the Corporation.

6.2.0 PLANS FOR THE FUTURE

- 6.2.1. **Commercial Centres:** The Corporation has a plan to develop Commercial centres in viable locations in the State. To achieve this, land has been set aside at Moremi Estate, along Ife-Ibadan Express Road, Ile-Ife and Oroki Estate, Osogbo. The layout and architectural drawings of the projects had been completed.
- 6.2.2. Work has started on the construction of a block of twelve (12) shopping units at the back of the initial block of Shops at Oroki Estate on Ilobu Road, Osogbo.
- 6.3.0. **Building of Houses with Interlocking Bricks**
- 6.3.1. As stated in Chapter 4 paragraph 4.2.4. (Item vi), the Corporation is pursuing the construction of houses with interlocking bricks to reduce the cost of housing construction and consequently housing price by at least 20%. Apart from the cost element, the following are additional advantages derivable from building houses with the bricks:
- * Encourages the use of locally available materials in building construction,
 - * Build houses which are aesthetically pleasing;
 - * Laterite (the main materials) is locally available in large quantities;
 - * Popularize the policy of Government to encourage and support the use of locally sourced and cheap building materials.
- 6.3.2. A prototype 3-bedroom bungalow under construction with the bricks at Akoda Estate, Ede is presently at roofing level.
- 6.3.3. As soon as the State Government releases the promised grant of ₦35.0m, the construction of houses with interlocking bricks will commence.



OSUN STATE PROPERTY DEVELOPMENT CORPORATION

MOREMI ESTATE BEHIND TRANS MOTELS

IBADAN ROAD,

P.O. BOX 1223, ILE-IFE

CONSULTANCY AND CONTRACTUAL SERVICES

Members of the general public are hereby informed that the Corporation engages in contractual and consultancy services to Government, its agencies and the general public.

The Services are:

- (i) Architectural and structural design for all types of building structures.
- (ii) Feasibility Report and Property Valuation.
- (iii) Management of Real Estate including property letting/leasing;
- (iv) Assignment Certificates of Occupancy, Letter of Consent;
- (v) Administration of Mortgage Loans/Mortgage Financing;
- (vi) Town and Country Planning matters including Approval Processing, Preparation of Structures Master Plan, Composite Sit Plan, Layout Plan, Block Plan and Urban and Rural Development Schemes;
- (vii) Building Construction and Supervision
- (viii) Supervision and Maintenance of Infrastructure: Roads, Drains, Water pipes, etc.
- (ix) General Maintenance of Properties and their Surroundings, Landscaping of Playgrounds, Parks, Open Spaces, and other improvements in private residential Estates.

For further information, interested clients should contact the General Manager, Osun State Property Development Corporation at the following address:

HEAD OFFICE

Moremi Estate
Besides Trans Motels Ltd.,
Ibadan Road P.O. Box 1223
Ile-Ife
GSM. No 08033828787

ZONAL OFFICE

Oroki Estate, Ilobu Road
P.M.B. 4354, Osogbo
Tel: 035-242597,242217
GSM No: 08051515890



OSUN STATE PROPERTY DEVELOPMENT CORPORATION

Moremi Estate Beside Trans Motels Ltd., Ibadan Road,

P.O. Box 1223, Ile-ife

APPEAL TO THE CUSTOMERS OF THE CORPORATION

The Osun State Property Development Corporation (OSPDC) wishes to appeal to all land allottees at Oroki Estate, Osogbo, Moremi Estate, Ile-ife; Ajaka Estate, Ilesa; Agunbe Estate, Ikirun, Owa-Ooye Estate, Imejele; Olufi Estate, Gbongan; Oluwo Estate, Iwo; Aiyegunle Estate, Oke-Omu and Akoda Estate, Ede to PLEASE pay fully for the Plots allocated to them and start the development of such plots immediately.

They are also to pay their Nominal Ground Rent and Economic Ground Rent as applicable. Likewise, all outstanding debts for services rendered by the Corporation must be paid for, without any delay.

The outstanding arrears against the various defaulters could be ascertained from our officers at the Head Office Moremi Estate Ile-Ife or at the Zonal Office, Oroki Estate, Osogbo.

All defaulters are requested to pay outstanding amounts to avoid any embarrassment.

MANAGEMENT.

JULY 2010

Thursday 1.....

.....

.....

Friday 2.....

.....

.....

Saturday 3.....

.....

.....

Sunday 4.....

.....

.....

Monday 5.....

.....

.....

Tuesday 6.....

.....

.....

Wednesday 7.....

.....

.....

July						
Sun	Mon	Tue	Wed	Thur	Fri	Sat
●	●	●		1	2	3
4	5	6	7	8	9	10
11	12	13	14	15	16	17
18	19	20	21	22	23	24
25	26	27	28	29	30	31

August						
Sun	Mon	Tue	Wed	Thur	Fri	Sat
1	2	3	4	5	6	7
8	9	10	11	12	13	14
15	16	17	18	19	20	21
22	23	24	25	26	27	28
29	30	31	●	●	●	●

September						
Sun	Mon	Tue	Wed	Thur	Fri	Sat
●	●	1	2	3	4	
5	6	7	8	9	10	11
12	13	14	15	16	17	18
19	20	21	22	23	24	25
26	27	28	29	30	●	●

October						
Sun	Mon	Tue	Wed	Thur	Fri	Sat
31	●	●	●	●	1	2
3	4	5	6	7	8	9
10	11	12	13	14	15	16
17	18	19	20	21	22	23
24	25	26	27	28	29	30

November						
Sun	Mon	Tue	Wed	Thur	Fri	Sat
	1	2	3	4	5	6
7	8	9	10	11	12	13
14	15	16	17	18	19	20
21	22	23	24	25	26	27
28	29	30	●	●	●	●

December						
Sun	Mon	Tue	Wed	Thur	Fri	Sat
●	●	1	2	3	4	
5	6	7	8	9	10	11
12	13	14	15	16	17	18
19	20	21	22	23	24	25
26	27	28	29	30	31	●

JULY 2010

Thursday 8.....

.....

.....

Friday 9.....

.....

.....

Saturday 10.....

.....

.....

Sunday 11.....

.....

.....

Monday 12.....

.....

.....

Tuesday 13.....

.....

.....

Wednesday 14.....

.....

.....

July						
Sun	Mon	Tue	Wed	Thur	Fri	Sat
●	●	●	1	2	3	
4	5	6	7	8	9	10
11	12	13	14	15	16	17
18	19	20	21	22	23	24
25	26	27	28	29	30	31

August						
Sun	Mon	Tue	Wed	Thur	Fri	Sat
1	2	3	4	5	6	7
8	9	10	11	12	13	14
15	16	17	18	19	20	21
22	23	24	25	26	27	28
29	30	31	●	●	●	●

September						
Sun	Mon	Tue	Wed	Thur	Fri	Sat
●	●	1	2	3	4	
5	6	7	8	9	10	11
12	13	14	15	16	17	18
19	20	21	22	23	24	25
26	27	28	29	30	●	●

October						
Sun	Mon	Tue	Wed	Thur	Fri	Sat
31	●	●	●	●	1	2
3	4	5	6	7	8	9
10	11	12	13	14	15	16
17	18	19	20	21	22	23
24	25	26	27	28	29	30

November						
Sun	Mon	Tue	Wed	Thur	Fri	Sat
1	2	3	4	5	6	
7	8	9	10	11	12	13
14	15	16	17	18	19	20
21	22	23	24	25	26	27
28	29	30	●	●	●	●

December						
Sun	Mon	Tue	Wed	Thur	Fri	Sat
●	●	1	2	3	4	
5	6	7	8	9	10	11
12	13	14	15	16	17	18
19	20	21	22	23	24	25
26	27	28	29	30	31	●

JULY 2010

Thursday 15.....

Friday 16.....

Saturday 17.....

Sunday 18.....

Monday 19.....

Tuesday 20.....

Wednesday 21.....

July						
Sun	Mon	Tue	Wed	Thur	Fri	Sat
●	●	●		1	2	3
4	5	6	7	8	9	10
11	12	13	14	15	16	17
18	19	20	21	22	23	24
25	26	27	28	29	30	31

August						
Sun	Mon	Tue	Wed	Thur	Fri	Sat
1	2	3	4	5	6	7
8	9	10	11	12	13	14
15	16	17	18	19	20	21
22	23	24	25	26	27	28
29	30	31	●	●	●	●

September						
Sun	Mon	Tue	Wed	Thur	Fri	Sat
●	●		1	2	3	4
5	6	7	8	9	10	11
12	13	14	15	16	17	18
19	20	21	22	23	24	25
26	27	28	29	30	●	●

October						
Sun	Mon	Tue	Wed	Thur	Fri	Sat
31	●	●	●	●	1	2
3	4	5	6	7	8	9
10	11	12	13	14	15	16
17	18	19	20	21	22	23
24	25	26	27	28	29	30

November						
Sun	Mon	Tue	Wed	Thur	Fri	Sat
1	2	3	4	5	6	
7	8	9	10	11	12	13
14	15	16	17	18	19	20
21	22	23	24	25	26	27
28	29	30	●	●	●	●

December						
Sun	Mon	Tue	Wed	Thur	Fri	Sat
●	●		1	2	3	4
5	6	7	8	9	10	11
12	13	14	15	16	17	18
19	20	21	22	23	24	25
26	27	28	29	30	31	●

JULY 2010

Thursday 22.....

.....

.....

Friday 23.....

.....

.....

Saturday 24.....

.....

.....

Sunday 25.....

.....

.....

Monday 26.....

.....

.....

Tuesday 27.....

.....

.....

Wednesday 28.....

.....

.....

July						
Sun	Mon	Tue	Wed	Thur	Fri	Sat
●	●	●	1	2	3	
4	5	6	7	8	9	10
11	12	13	14	15	16	17
18	19	20	21	22	23	24
25	26	27	28	29	30	31

August						
Sun	Mon	Tue	Wed	Thur	Fri	Sat
1	2	3	4	5	6	7
8	9	10	11	12	13	14
15	16	17	18	19	20	21
22	23	24	25	26	27	28
29	30	31	●	●	●	●

September						
Sun	Mon	Tue	Wed	Thur	Fri	Sat
●	●	1	2	3	4	
5	6	7	8	9	10	11
12	13	14	15	16	17	18
19	20	21	22	23	24	25
26	27	28	29	30	●	●

October						
Sun	Mon	Tue	Wed	Thur	Fri	Sat
31	●	●	●	1	2	
3	4	5	6	7	8	9
10	11	12	13	14	15	16
17	18	19	20	21	22	23
24	25	26	27	28	29	30

November						
Sun	Mon	Tue	Wed	Thur	Fri	Sat
1	2	3	4	5	6	
7	8	9	10	11	12	13
14	15	16	17	18	19	20
21	22	23	24	25	26	27
28	29	30	●	●	●	●

December						
Sun	Mon	Tue	Wed	Thur	Fri	Sat
●	●	1	2	3	4	
5	6	7	8	9	10	11
12	13	14	15	16	17	18
19	20	21	22	23	24	25
26	27	28	29	30	31	●

JULY / AUGUST 2010

Thursday 29.....

.....

.....

Friday 30.....

.....

.....

Saturday 31.....

.....

.....

Sunday 1.....

.....

.....

Monday 2.....

.....

.....

Tuesday 3.....

.....

.....

Wednesday 4.....

.....

.....

July						
Sun	Mon	Tue	Wed	Thur	Fri	Sat
●	●	●	1	2	3	
4	5	6	7	8	9	10
11	12	13	14	15	16	17
18	19	20	21	22	23	24
25	26	27	28	29	30	31

August						
Sun	Mon	Tue	Wed	Thur	Fri	Sat
1	2	3	4	5	6	7
8	9	10	11	12	13	14
15	16	17	18	19	20	21
22	23	24	25	26	27	28
29	30	31	●	●	●	●

September						
Sun	Mon	Tue	Wed	Thur	Fri	Sat
●	●	1	2	3	4	
5	6	7	8	9	10	11
12	13	14	15	16	17	18
19	20	21	22	23	24	25
26	27	28	29	30	●	●

October						
Sun	Mon	Tue	Wed	Thur	Fri	Sat
31	●	●	●	1	2	
3	4	5	6	7	8	9
10	11	12	13	14	15	16
17	18	19	20	21	22	23
24	25	26	27	28	29	30

November						
Sun	Mon	Tue	Wed	Thur	Fri	Sat
1	2	3	4	5	6	
7	8	9	10	11	12	13
14	15	16	17	18	19	20
21	22	23	24	25	26	27
28	29	30	●	●	●	●

December						
Sun	Mon	Tue	Wed	Thur	Fri	Sat
●	●	1	2	3	4	
5	6	7	8	9	10	11
12	13	14	15	16	17	18
19	20	21	22	23	24	25
26	27	28	29	30	31	●

AUGUST 2010

Thursday 5.....

Friday 6.....

Saturday 7.....

Sunday 8.....

Monday 9.....

Tuesday 10.....

Wednesday 11.....

July						
Sun	Mon	Tue	Wed	Thur	Fri	Sat
●	●	●	1	2	3	
4	5	6	7	8	9	10
11	12	13	14	15	16	17
18	19	20	21	22	23	24
25	26	27	28	29	30	31

August						
Sun	Mon	Tue	Wed	Thur	Fri	Sat
1	2	3	4	5	6	7
8	9	10	11	12	13	14
15	16	17	18	19	20	21
22	23	24	25	26	27	28
29	30	31	●	●	●	●

September						
Sun	Mon	Tue	Wed	Thur	Fri	Sat
●	●	1	2	3	4	
5	6	7	8	9	10	11
12	13	14	15	16	17	18
19	20	21	22	23	24	25
26	27	28	29	30	●	●

October						
Sun	Mon	Tue	Wed	Thur	Fri	Sat
31	●	●	●	1	2	
3	4	5	6	7	8	9
10	11	12	13	14	15	16
17	18	19	20	21	22	23
24	25	26	27	28	29	30

November						
Sun	Mon	Tue	Wed	Thur	Fri	Sat
1	2	3	4	5	6	
7	8	9	10	11	12	13
14	15	16	17	18	19	20
21	22	23	24	25	26	27
28	29	30	●	●	●	●

December						
Sun	Mon	Tue	Wed	Thur	Fri	Sat
●	●	1	2	3	4	
5	6	7	8	9	10	11
12	13	14	15	16	17	18
19	20	21	22	23	24	25
26	27	28	29	30	31	●

AUGUST 2010

Thursday 12.....

Friday 13.....

Saturday 14.....

Sunday 15.....

Monday 16.....

Tuesday 17.....

Wednesday 18.....

July						
Sun	Mon	Tue	Wed	Thur	Fri	Sat
	●	●	●	1	2	3
4	5	6	7	8	9	10
11	12	13	14	15	16	17
18	19	20	21	22	23	24
25	26	27	28	29	30	31

August						
Sun	Mon	Tue	Wed	Thur	Fri	Sat
1	2	3	4	5	6	7
8	9	10	11	12	13	14
15	16	17	18	19	20	21
22	23	24	25	26	27	28
29	30	31	●	●	●	●

September						
Sun	Mon	Tue	Wed	Thur	Fri	Sat
	●	●	1	2	3	4
5	6	7	8	9	10	11
12	13	14	15	16	17	18
19	20	21	22	23	24	25
26	27	28	29	30	●	●

October						
Sun	Mon	Tue	Wed	Thur	Fri	Sat
31	●	●	●	●	1	2
3	4	5	6	7	8	9
10	11	12	13	14	15	16
17	18	19	20	21	22	23
24	25	26	27	28	29	30

November						
Sun	Mon	Tue	Wed	Thur	Fri	Sat
	1	2	3	4	5	6
7	8	9	10	11	12	13
14	15	16	17	18	19	20
21	22	23	24	25	26	27
28	29	30	●	●	●	●

December						
Sun	Mon	Tue	Wed	Thur	Fri	Sat
	●	●	1	2	3	4
5	6	7	8	9	10	11
12	13	14	15	16	17	18
19	20	21	22	23	24	25
26	27	28	29	30	31	●

AUGUST 2010

Thursday 19.....

.....

.....

Friday 20.....

.....

.....

Saturday 21.....

.....

.....

Sunday 22.....

.....

.....

Monday 23.....

.....

.....

Tuesday 24.....

.....

.....

Wednesday 25.....

.....

.....

July						
Sun	Mon	Tue	Wed	Thur	Fri	Sat
	●	●	●	1	2	3
4	5	6	7	8	9	10
11	12	13	14	15	16	17
18	19	20	21	22	23	24
25	26	27	28	29	30	31

August						
Sun	Mon	Tue	Wed	Thur	Fri	Sat
1	2	3	4	5	6	7
8	9	10	11	12	13	14
15	16	17	18	19	20	21
22	23	24	25	26	27	28
29	30	31	●	●	●	●

September						
Sun	Mon	Tue	Wed	Thur	Fri	Sat
	●	●	1	2	3	4
5	6	7	8	9	10	11
12	13	14	15	16	17	18
19	20	21	22	23	24	25
26	27	28	29	30	●	●

October						
Sun	Mon	Tue	Wed	Thur	Fri	Sat
31	●	●	●	●	1	2
3	4	5	6	7	8	9
10	11	12	13	14	15	16
17	18	19	20	21	22	23
24	25	26	27	28	29	30

November						
Sun	Mon	Tue	Wed	Thur	Fri	Sat
	1	2	3	4	5	6
7	8	9	10	11	12	13
14	15	16	17	18	19	20
21	22	23	24	25	26	27
28	29	30	●	●	●	●

December						
Sun	Mon	Tue	Wed	Thur	Fri	Sat
	●	●	1	2	3	4
5	6	7	8	9	10	11
12	13	14	15	16	17	18
19	20	21	22	23	24	25
26	27	28	29	30	31	●

AUGUST / SEPTEMBER 2010

Thursday 26.....

.....

.....

Friday 27.....

.....

.....

Saturday 28.....

.....

.....

Sunday 29.....

.....

.....

Monday 30.....

.....

.....

Tuesday 31.....

.....

.....

Wednesday 1.....

.....

.....

July						
Sun	Mon	Tue	Wed	Thur	Fri	Sat
	●	●	●	1	2	3
4	5	6	7	8	9	10
11	12	13	14	15	16	17
18	19	20	21	22	23	24
25	26	27	28	29	30	31

August						
Sun	Mon	Tue	Wed	Thur	Fri	Sat
1	2	3	4	5	6	7
8	9	10	11	12	13	14
15	16	17	18	19	20	21
22	23	24	25	26	27	28
29	30	31	●	●	●	●

September						
Sun	Mon	Tue	Wed	Thur	Fri	Sat
	●	●	1	2	3	4
5	6	7	8	9	10	11
12	13	14	15	16	17	18
19	20	21	22	23	24	25
26	27	28	29	30	●	●

October						
Sun	Mon	Tue	Wed	Thur	Fri	Sat
31	●	●	●	●	1	2
3	4	5	6	7	8	9
10	11	12	13	14	15	16
17	18	19	20	21	22	23
24	25	26	27	28	29	30

November						
Sun	Mon	Tue	Wed	Thur	Fri	Sat
1	2	3	4	5	6	
7	8	9	10	11	12	13
14	15	16	17	18	19	20
21	22	23	24	25	26	27
28	29	30	●	●	●	●

December						
Sun	Mon	Tue	Wed	Thur	Fri	Sat
	●	●	1	2	3	4
5	6	7	8	9	10	11
12	13	14	15	16	17	18
19	20	21	22	23	24	25
26	27	28	29	30	31	●

SEPTEMBER 2010

Thursday 2.....

.....

.....

Friday 3.....

.....

.....

Saturday 4.....

.....

.....

Sunday 5.....

.....

.....

Monday 6.....

.....

.....

Tuesday 7.....

.....

.....

Wednesday 8.....

.....

.....

July						
Sun	Mon	Tue	Wed	Thur	Fri	Sat
●	●	●	1	2	3	
4	5	6	7	8	9	10
11	12	13	14	15	16	17
18	19	20	21	22	23	24
25	26	27	28	29	30	31

August						
Sun	Mon	Tue	Wed	Thur	Fri	Sat
1	2	3	4	5	6	7
8	9	10	11	12	13	14
15	16	17	18	19	20	21
22	23	24	25	26	27	28
29	30	31	●	●	●	●

September						
Sun	Mon	Tue	Wed	Thur	Fri	Sat
●	●	1	2	3	4	
5	6	7	8	9	10	11
12	13	14	15	16	17	18
19	20	21	22	23	24	25
26	27	28	29	30	●	●

October						
Sun	Mon	Tue	Wed	Thur	Fri	Sat
31	●	●	●	1	2	
3	4	5	6	7	8	9
10	11	12	13	14	15	16
17	18	19	20	21	22	23
24	25	26	27	28	29	30

November						
Sun	Mon	Tue	Wed	Thur	Fri	Sat
	1	2	3	4	5	6
7	8	9	10	11	12	13
14	15	16	17	18	19	20
21	22	23	24	25	26	27
28	29	30	●	●	●	●

December						
Sun	Mon	Tue	Wed	Thur	Fri	Sat
●	●	1	2	3	4	
5	6	7	8	9	10	11
12	13	14	15	16	17	18
19	20	21	22	23	24	25
26	27	28	29	30	31	●

SEPTEMBER 2010

Thursday 9.....

Friday 10.....

Saturday 11.....

Sunday 12.....

Monday 13.....

Tuesday 14.....

Wednesday 15.....

July						
Sun	Mon	Tue	Wed	Thur	Fri	Sat
	●	●	●	1	2	3
4	5	6	7	8	9	10
11	12	13	14	15	16	17
18	19	20	21	22	23	24
25	26	27	28	29	30	31

August						
Sun	Mon	Tue	Wed	Thur	Fri	Sat
1	2	3	4	5	6	7
8	9	10	11	12	13	14
15	16	17	18	19	20	21
22	23	24	25	26	27	28
29	30	31	●	●	●	●

September						
Sun	Mon	Tue	Wed	Thur	Fri	Sat
	●	●	1	2	3	4
5	6	7	8	9	10	11
12	13	14	15	16	17	18
19	20	21	22	23	24	25
26	27	28	29	30	●	●

October						
Sun	Mon	Tue	Wed	Thur	Fri	Sat
31	●	●	●	●	1	2
3	4	5	6	7	8	9
10	11	12	13	14	15	16
17	18	19	20	21	22	23
24	25	26	27	28	29	30

November						
Sun	Mon	Tue	Wed	Thur	Fri	Sat
	1	2	3	4	5	6
7	8	9	10	11	12	13
14	15	16	17	18	19	20
21	22	23	24	25	26	27
28	29	30	●	●	●	●

December						
Sun	Mon	Tue	Wed	Thur	Fri	Sat
	●	●	1	2	3	4
5	6	7	8	9	10	11
12	13	14	15	16	17	18
19	20	21	22	23	24	25
26	27	28	29	30	31	●

SEPTEMBER 2010

Thursday 16.....

.....

.....

Friday 17.....

.....

.....

Saturday 18.....

.....

.....

Sunday 19.....

.....

.....

Monday 20.....

.....

.....

Tuesday 21.....

.....

.....

Wednesday 22.....

.....

.....

July						
Sun	Mon	Tue	Wed	Thur	Fri	Sat
●	●	●	1	2	3	
4	5	6	7	8	9	10
11	12	13	14	15	16	17
18	19	20	21	22	23	24
25	26	27	28	29	30	31

August						
Sun	Mon	Tue	Wed	Thur	Fri	Sat
1	2	3	4	5	6	7
8	9	10	11	12	13	14
15	16	17	18	19	20	21
22	23	24	25	26	27	28
29	30	31	●	●	●	●

September						
Sun	Mon	Tue	Wed	Thur	Fri	Sat
●	●	1	2	3	4	
5	6	7	8	9	10	11
12	13	14	15	16	17	18
19	20	21	22	23	24	25
26	27	28	29	30	●	●

October						
Sun	Mon	Tue	Wed	Thur	Fri	Sat
31	●	●	●	●	1	2
3	4	5	6	7	8	9
10	11	12	13	14	15	16
17	18	19	20	21	22	23
24	25	26	27	28	29	30

November						
Sun	Mon	Tue	Wed	Thur	Fri	Sat
1	2	3	4	5	6	
7	8	9	10	11	12	13
14	15	16	17	18	19	20
21	22	23	24	25	26	27
28	29	30	●	●	●	●

December						
Sun	Mon	Tue	Wed	Thur	Fri	Sat
●	●	1	2	3	4	
5	6	7	8	9	10	11
12	13	14	15	16	17	18
19	20	21	22	23	24	25
26	27	28	29	30	31	●

SEPTEMBER 2010

Thursday 23.....

Friday 24.....

Saturday 25.....

Sunday 26.....

Monday 27.....

Tuesday 28.....

Wednesday 29.....

July						
Sun	Mon	Tue	Wed	Thur	Fri	Sat
●	●	●	1	2	3	
4	5	6	7	8	9	10
11	12	13	14	15	16	17
18	19	20	21	22	23	24
25	26	27	28	29	30	31

August						
Sun	Mon	Tue	Wed	Thur	Fri	Sat
1	2	3	4	5	6	7
8	9	10	11	12	13	14
15	16	17	18	19	20	21
22	23	24	25	26	27	28
29	30	31	●	●	●	●

September						
Sun	Mon	Tue	Wed	Thur	Fri	Sat
●	●	1	2	3	4	
5	6	7	8	9	10	11
12	13	14	15	16	17	18
19	20	21	22	23	24	25
26	27	28	29	30	●	●

October						
Sun	Mon	Tue	Wed	Thur	Fri	Sat
31	●	●	●	1	2	
3	4	5	6	7	8	9
10	11	12	13	14	15	16
17	18	19	20	21	22	23
24	25	26	27	28	29	30

November						
Sun	Mon	Tue	Wed	Thur	Fri	Sat
1	2	3	4	5	6	
7	8	9	10	11	12	13
14	15	16	17	18	19	20
21	22	23	24	25	26	27
28	29	30	●	●	●	●

December						
Sun	Mon	Tue	Wed	Thur	Fri	Sat
●	●	1	2	3	4	
5	6	7	8	9	10	11
12	13	14	15	16	17	18
19	20	21	22	23	24	25
26	27	28	29	30	31	●

SEPTEMBER / OCTOBER 2010

Thursday 30.....

.....

.....

Friday 1.....

.....

.....

Saturday 2.....

.....

.....

Sunday 3.....

.....

.....

Monday 4.....

.....

.....

Tuesday 5.....

.....

.....

Wednesday 6.....

.....

.....

July						
Sun	Mon	Tue	Wed	Thur	Fri	Sat
●	●	●	1	2	3	
4	5	6	7	8	9	10
11	12	13	14	15	16	17
18	19	20	21	22	23	24
25	26	27	28	29	30	31

August						
Sun	Mon	Tue	Wed	Thur	Fri	Sat
1	2	3	4	5	6	7
8	9	10	11	12	13	14
15	16	17	18	19	20	21
22	23	24	25	26	27	28
29	30	31	●	●	●	●

September						
Sun	Mon	Tue	Wed	Thur	Fri	Sat
●	●	1	2	3	4	
5	6	7	8	9	10	11
12	13	14	15	16	17	18
19	20	21	22	23	24	25
26	27	28	29	30	●	●

October						
Sun	Mon	Tue	Wed	Thur	Fri	Sat
31	●	●	●	●	1	2
3	4	5	6	7	8	9
10	11	12	13	14	15	16
17	18	19	20	21	22	23
24	25	26	27	28	29	30

November						
Sun	Mon	Tue	Wed	Thur	Fri	Sat
1	2	3	4	5	6	
7	8	9	10	11	12	13
14	15	16	17	18	19	20
21	22	23	24	25	26	27
28	29	30	●	●	●	●

December						
Sun	Mon	Tue	Wed	Thur	Fri	Sat
●	●	1	2	3	4	
5	6	7	8	9	10	11
12	13	14	15	16	17	18
19	20	21	22	23	24	25
26	27	28	29	30	31	●

OCTOBER 2010

Thursday 7.....

Friday 8.....

Saturday 9.....

Sunday 10.....

Monday 11.....

Tuesday 12.....

Wednesday 13.....

July						
Sun	Mon	Tue	Wed	Thur	Fri	Sat
	●	●	●	1	2	3
4	5	6	7	8	9	10
11	12	13	14	15	16	17
18	19	20	21	22	23	24
25	26	27	28	29	30	31

August						
Sun	Mon	Tue	Wed	Thur	Fri	Sat
1	2	3	4	5	6	7
8	9	10	11	12	13	14
15	16	17	18	19	20	21
22	23	24	25	26	27	28
29	30	31	●	●	●	●

September						
Sun	Mon	Tue	Wed	Thur	Fri	Sat
	●	●	1	2	3	4
5	6	7	8	9	10	11
12	13	14	15	16	17	18
19	20	21	22	23	24	25
26	27	28	29	30	●	●

October						
Sun	Mon	Tue	Wed	Thur	Fri	Sat
31	●	●	●	1	2	
3	4	5	6	7	8	9
10	11	12	13	14	15	16
17	18	19	20	21	22	23
24	25	26	27	28	29	30

November						
Sun	Mon	Tue	Wed	Thur	Fri	Sat
	1	2	3	4	5	6
7	8	9	10	11	12	13
14	15	16	17	18	19	20
21	22	23	24	25	26	27
28	29	30	●	●	●	●

December						
Sun	Mon	Tue	Wed	Thur	Fri	Sat
	●	●	1	2	3	4
5	6	7	8	9	10	11
12	13	14	15	16	17	18
19	20	21	22	23	24	25
26	27	28	29	30	31	●

OCTOBER 2010

Thursday 14.....

Friday 15.....

Saturday 16.....

Sunday 17.....

Monday 18.....

Tuesday 19.....

Wednesday 20.....

July

Sun	Mon	Tue	Wed	Thur	Fri	Sat
●	●	●	1	2	3	
4	5	6	7	8	9	10
11	12	13	14	15	16	17
18	19	20	21	22	23	24
25	26	27	28	29	30	31

August

Sun	Mon	Tue	Wed	Thur	Fri	Sat
1	2	3	4	5	6	7
8	9	10	11	12	13	14
15	16	17	18	19	20	21
22	23	24	25	26	27	28
29	30	31	●	●	●	●

September

Sun	Mon	Tue	Wed	Thur	Fri	Sat
●	●	1	2	3	4	
5	6	7	8	9	10	11
12	13	14	15	16	17	18
19	20	21	22	23	24	25
26	27	28	29	30	●	●

October

Sun	Mon	Tue	Wed	Thur	Fri	Sat
31	●	●	●	●	1	2
3	4	5	6	7	8	9
10	11	12	13	14	15	16
17	18	19	20	21	22	23
24	25	26	27	28	29	30

November

Sun	Mon	Tue	Wed	Thur	Fri	Sat
1	2	3	4	5	6	
7	8	9	10	11	12	13
14	15	16	17	18	19	20
21	22	23	24	25	26	27
28	29	30	●	●	●	●

December

Sun	Mon	Tue	Wed	Thur	Fri	Sat
●	●	1	2	3	4	
5	6	7	8	9	10	11
12	13	14	15	16	17	18
19	20	21	22	23	24	25
26	27	28	29	30	31	●

OCTOBER 2010

Thursday 21.....

.....

.....

Friday 22.....

.....

.....

Saturday 23.....

.....

.....

Sunday 24.....

.....

.....

Monday 25.....

.....

.....

Tuesday 26.....

.....

.....

Wednesday 27.....

.....

.....

July

Sun	Mon	Tue	Wed	Thur	Fri	Sat
●	●	●	1	2	3	
4	5	6	7	8	9	10
11	12	13	14	15	16	17
18	19	20	21	22	23	24
25	26	27	28	29	30	31

August

Sun	Mon	Tue	Wed	Thur	Fri	Sat
1	2	3	4	5	6	7
8	9	10	11	12	13	14
15	16	17	18	19	20	21
22	23	24	25	26	27	28
29	30	31	●	●	●	●

September

Sun	Mon	Tue	Wed	Thur	Fri	Sat
●	●	1	2	3	4	
5	6	7	8	9	10	11
12	13	14	15	16	17	18
19	20	21	22	23	24	25
26	27	28	29	30	●	●

October

Sun	Mon	Tue	Wed	Thur	Fri	Sat
31	●	●	●	1	2	
3	4	5	6	7	8	9
10	11	12	13	14	15	16
17	18	19	20	21	22	23
24	25	26	27	28	29	30

November

Sun	Mon	Tue	Wed	Thur	Fri	Sat
1	2	3	4	5	6	
7	8	9	10	11	12	13
14	15	16	17	18	19	20
21	22	23	24	25	26	27
28	29	30	●	●	●	●

December

Sun	Mon	Tue	Wed	Thur	Fri	Sat
●	●	1	2	3	4	
5	6	7	8	9	10	11
12	13	14	15	16	17	18
19	20	21	22	23	24	25
26	27	28	29	30	31	●

OCTOBER / NOVEMBER 2010

Thursday 28.....

.....

.....

Friday 29.....

.....

.....

Saturday 30.....

.....

.....

Sunday 31.....

.....

.....

Monday 1.....

.....

.....

Tuesday 2.....

.....

.....

Wednesday 3.....

.....

.....

July

Sun	Mon	Tue	Wed	Thur	Fri	Sat
●	●	●	1	2	3	
4	5	6	7	8	9	10
11	12	13	14	15	16	17
18	19	20	21	22	23	24
25	26	27	28	29	30	31

August

Sun	Mon	Tue	Wed	Thur	Fri	Sat
1	2	3	4	5	6	7
8	9	10	11	12	13	14
15	16	17	18	19	20	21
22	23	24	25	26	27	28
29	30	31	●	●	●	●

September

Sun	Mon	Tue	Wed	Thur	Fri	Sat
●	●	1	2	3	4	
5	6	7	8	9	10	11
12	13	14	15	16	17	18
19	20	21	22	23	24	25
26	27	28	29	30	●	●

October

Sun	Mon	Tue	Wed	Thur	Fri	Sat
31	●	●	●	1	2	
3	4	5	6	7	8	9
10	11	12	13	14	15	16
17	18	19	20	21	22	23
24	25	26	27	28	29	30

November

Sun	Mon	Tue	Wed	Thur	Fri	Sat
1	2	3	4	5	6	
7	8	9	10	11	12	13
14	15	16	17	18	19	20
21	22	23	24	25	26	27
28	29	30	●	●	●	●

December

Sun	Mon	Tue	Wed	Thur	Fri	Sat
●	●	1	2	3	4	
5	6	7	8	9	10	11
12	13	14	15	16	17	18
19	20	21	22	23	24	25
26	27	28	29	30	31	●

NOVEMBER 2010

Thursday 4.....

Friday 5.....

Saturday 6.....

Sunday 7.....

Monday 8.....

Tuesday 9.....

Wednesday 10.....

July						
Sun	Mon	Tue	Wed	Thur	Fri	Sat
●	●	●	1	2	3	
4	5	6	7	8	9	10
11	12	13	14	15	16	17
18	19	20	21	22	23	24
25	26	27	28	29	30	31

August						
Sun	Mon	Tue	Wed	Thur	Fri	Sat
1	2	3	4	5	6	7
8	9	10	11	12	13	14
15	16	17	18	19	20	21
22	23	24	25	26	27	28
29	30	31	●	●	●	●

September						
Sun	Mon	Tue	Wed	Thur	Fri	Sat
●	●	●	1	2	3	4
5	6	7	8	9	10	11
12	13	14	15	16	17	18
19	20	21	22	23	24	25
26	27	28	29	30	●	●

October						
Sun	Mon	Tue	Wed	Thur	Fri	Sat
31	●	●	●	1	2	
3	4	5	6	7	8	9
10	11	12	13	14	15	16
17	18	19	20	21	22	23
24	25	26	27	28	29	30

November						
Sun	Mon	Tue	Wed	Thur	Fri	Sat
1	2	3	4	5	6	
7	8	9	10	11	12	13
14	15	16	17	18	19	20
21	22	23	24	25	26	27
28	29	30	●	●	●	●

December						
Sun	Mon	Tue	Wed	Thur	Fri	Sat
●	●	●	1	2	3	4
5	6	7	8	9	10	11
12	13	14	15	16	17	18
19	20	21	22	23	24	25
26	27	28	29	30	31	●

NOVEMBER 2010

Thursday 11.....

.....

.....

Friday 12.....

.....

.....

Saturday 13.....

.....

.....

Sunday 14.....

.....

.....

Monday 15.....

.....

.....

Tuesday 16.....

.....

.....

Wednesday 17.....

.....

.....

July						
Sun	Mon	Tue	Wed	Thur	Fri	Sat
●	●	●	1	2	3	
4	5	6	7	8	9	10
11	12	13	14	15	16	17
18	19	20	21	22	23	24
25	26	27	28	29	30	31

August						
Sun	Mon	Tue	Wed	Thur	Fri	Sat
1	2	3	4	5	6	7
8	9	10	11	12	13	14
15	16	17	18	19	20	21
22	23	24	25	26	27	28
29	30	31	●	●	●	

September						
Sun	Mon	Tue	Wed	Thur	Fri	Sat
●	●	1	2	3	4	
5	6	7	8	9	10	11
12	13	14	15	16	17	18
19	20	21	22	23	24	25
26	27	28	29	30	●	●

October						
Sun	Mon	Tue	Wed	Thur	Fri	Sat
31	●	●	●	1	2	
3	4	5	6	7	8	9
10	11	12	13	14	15	16
17	18	19	20	21	22	23
24	25	26	27	28	29	30

November						
Sun	Mon	Tue	Wed	Thur	Fri	Sat
1	2	3	4	5	6	
7	8	9	10	11	12	13
14	15	16	17	18	19	20
21	22	23	24	25	26	27
28	29	30	●	●	●	

December						
Sun	Mon	Tue	Wed	Thur	Fri	Sat
●	●	1	2	3	4	
5	6	7	8	9	10	11
12	13	14	15	16	17	18
19	20	21	22	23	24	25
26	27	28	29	30	31	●

NOVEMBER 2010

Thursday 18.....

.....

.....

Friday 19.....

.....

.....

Saturday 20.....

.....

.....

Sunday 21.....

.....

.....

Monday 22.....

.....

.....

Tuesday 23.....

.....

.....

Wednesday 24.....

.....

.....

July						
Sun	Mon	Tue	Wed	Thur	Fri	Sat
●	●	●	1	2	3	
4	5	6	7	8	9	10
11	12	13	14	15	16	17
18	19	20	21	22	23	24
25	26	27	28	29	30	31

August						
Sun	Mon	Tue	Wed	Thur	Fri	Sat
1	2	3	4	5	6	7
8	9	10	11	12	13	14
15	16	17	18	19	20	21
22	23	24	25	26	27	28
29	30	31	●	●	●	●

September						
Sun	Mon	Tue	Wed	Thur	Fri	Sat
●	●	1	2	3	4	
5	6	7	8	9	10	11
12	13	14	15	16	17	18
19	20	21	22	23	24	25
26	27	28	29	30	●	●

October						
Sun	Mon	Tue	Wed	Thur	Fri	Sat
31	●	●	●	1	2	
3	4	5	6	7	8	9
10	11	12	13	14	15	16
17	18	19	20	21	22	23
24	25	26	27	28	29	30

November						
Sun	Mon	Tue	Wed	Thur	Fri	Sat
1	2	3	4	5	6	
7	8	9	10	11	12	13
14	15	16	17	18	19	20
21	22	23	24	25	26	27
28	29	30	●	●	●	●

December						
Sun	Mon	Tue	Wed	Thur	Fri	Sat
●	●	1	2	3	4	
5	6	7	8	9	10	11
12	13	14	15	16	17	18
19	20	21	22	23	24	25
26	27	28	29	30	31	●

NOVEMBER / DECEMBER 2010

Thursday 25.....

Friday 26.....

Saturday 27.....

Sunday 28.....

Monday 29.....

Tuesday 30.....

Wednesday 1.....

July						
Sun	Mon	Tue	Wed	Thur	Fri	Sat
	●	●	●	1	2	3
4	5	6	7	8	9	10
11	12	13	14	15	16	17
18	19	20	21	22	23	24
25	26	27	28	29	30	31

August						
Sun	Mon	Tue	Wed	Thur	Fri	Sat
1	2	3	4	5	6	7
8	9	10	11	12	13	14
15	16	17	18	19	20	21
22	23	24	25	26	27	28
29	30	31	●	●	●	●

September						
Sun	Mon	Tue	Wed	Thur	Fri	Sat
	●	●	1	2	3	4
5	6	7	8	9	10	11
12	13	14	15	16	17	18
19	20	21	22	23	24	25
26	27	28	29	30	●	●

October						
Sun	Mon	Tue	Wed	Thur	Fri	Sat
31	●	●	●	●	1	2
3	4	5	6	7	8	9
10	11	12	13	14	15	16
17	18	19	20	21	22	23
24	25	26	27	28	29	30

November						
Sun	Mon	Tue	Wed	Thur	Fri	Sat
	1	2	3	4	5	6
7	8	9	10	11	12	13
14	15	16	17	18	19	20
21	22	23	24	25	26	27
28	29	30	●	●	●	●

December						
Sun	Mon	Tue	Wed	Thur	Fri	Sat
	●	●	1	2	3	4
5	6	7	8	9	10	11
12	13	14	15	16	17	18
19	20	21	22	23	24	25
26	27	28	29	30	31	●

DECEMBER 2010

Thursday 2.....

.....

.....

Friday 3.....

.....

.....

Saturday 4.....

.....

.....

Sunday 5.....

.....

.....

Monday 6.....

.....

.....

Tuesday 7.....

.....

.....

Wednesday 8.....

.....

.....

July						
Sun	Mon	Tue	Wed	Thur	Fri	Sat
●	●	●	1	2	3	
4	5	6	7	8	9	10
11	12	13	14	15	16	17
18	19	20	21	22	23	24
25	26	27	28	29	30	31

August						
Sun	Mon	Tue	Wed	Thur	Fri	Sat
1	2	3	4	5	6	7
8	9	10	11	12	13	14
15	16	17	18	19	20	21
22	23	24	25	26	27	28
29	30	31	●	●	●	●

September						
Sun	Mon	Tue	Wed	Thur	Fri	Sat
●	●	1	2	3	4	
5	6	7	8	9	10	11
12	13	14	15	16	17	18
19	20	21	22	23	24	25
26	27	28	29	30	●	●

October						
Sun	Mon	Tue	Wed	Thur	Fri	Sat
31	●	●	●	●	1	2
3	4	5	6	7	8	9
10	11	12	13	14	15	16
17	18	19	20	21	22	23
24	25	26	27	28	29	30

November						
Sun	Mon	Tue	Wed	Thur	Fri	Sat
1	2	3	4	5	6	
7	8	9	10	11	12	13
14	15	16	17	18	19	20
21	22	23	24	25	26	27
28	29	30	●	●	●	●

December						
Sun	Mon	Tue	Wed	Thur	Fri	Sat
●	●	1	2	3	4	
5	6	7	8	9	10	11
12	13	14	15	16	17	18
19	20	21	22	23	24	25
26	27	28	29	30	31	●

DECEMBER 2010

Thursday 9.....

.....

.....

Friday 10.....

.....

.....

Saturday 11.....

.....

.....

Sunday 12.....

.....

.....

Monday 13.....

.....

.....

Tuesday 14.....

.....

.....

Wednesday 15.....

.....

.....

July						
Sun	Mon	Tue	Wed	Thur	Fri	Sat
●	●	●	1	2	3	
4	5	6	7	8	9	10
11	12	13	14	15	16	17
18	19	20	21	22	23	24
25	26	27	28	29	30	31

August						
Sun	Mon	Tue	Wed	Thur	Fri	Sat
1	2	3	4	5	6	7
8	9	10	11	12	13	14
15	16	17	18	19	20	21
22	23	24	25	26	27	28
29	30	31	●	●	●	●

September						
Sun	Mon	Tue	Wed	Thur	Fri	Sat
●	●	1	2	3	4	
5	6	7	8	9	10	11
12	13	14	15	16	17	18
19	20	21	22	23	24	25
26	27	28	29	30	●	●

October						
Sun	Mon	Tue	Wed	Thur	Fri	Sat
31	●	●	●	1	2	
3	4	5	6	7	8	9
10	11	12	13	14	15	16
17	18	19	20	21	22	23
24	25	26	27	28	29	30

November						
Sun	Mon	Tue	Wed	Thur	Fri	Sat
1	2	3	4	5	6	
7	8	9	10	11	12	13
14	15	16	17	18	19	20
21	22	23	24	25	26	27
28	29	30	●	●	●	●

December						
Sun	Mon	Tue	Wed	Thur	Fri	Sat
●	●	1	2	3	4	
5	6	7	8	9	10	11
12	13	14	15	16	17	18
19	20	21	22	23	24	25
26	27	28	29	30	31	●

DECEMBER 2010

Thursday 16.....

.....

.....

Friday 17.....

.....

.....

Saturday 18.....

.....

.....

Sunday 19.....

.....

.....

Monday 20.....

.....

.....

Tuesday 21.....

.....

.....

Wednesday 22.....

.....

.....

July						
Sun	Mon	Tue	Wed	Thur	Fri	Sat
●	●	●	1	2	3	
4	5	6	7	8	9	10
11	12	13	14	15	16	17
18	19	20	21	22	23	24
25	26	27	28	29	30	31

August						
Sun	Mon	Tue	Wed	Thur	Fri	Sat
1	2	3	4	5	6	7
8	9	10	11	12	13	14
15	16	17	18	19	20	21
22	23	24	25	26	27	28
29	30	31	●	●	●	●

September						
Sun	Mon	Tue	Wed	Thur	Fri	Sat
●	●	1	2	3	4	
5	6	7	8	9	10	11
12	13	14	15	16	17	18
19	20	21	22	23	24	25
26	27	28	29	30	●	●

October						
Sun	Mon	Tue	Wed	Thur	Fri	Sat
31	●	●	●	1	2	
3	4	5	6	7	8	9
10	11	12	13	14	15	16
17	18	19	20	21	22	23
24	25	26	27	28	29	30

November						
Sun	Mon	Tue	Wed	Thur	Fri	Sat
1	2	3	4	5	6	
7	8	9	10	11	12	13
14	15	16	17	18	19	20
21	22	23	24	25	26	27
28	29	30	●	●	●	●

December						
Sun	Mon	Tue	Wed	Thur	Fri	Sat
●	●	1	2	3	4	
5	6	7	8	9	10	11
12	13	14	15	16	17	18
19	20	21	22	23	24	25
26	27	28	29	30	31	●

DECEMBER 2010

Thursday 23.....

.....

.....

Friday 24.....

.....

.....

Saturday 25.....

.....

.....

Sunday 26.....

.....

.....

Monday 27.....

.....

.....

Tuesday 28.....

.....

.....

Wednesday 29.....

.....

.....

July						
Sun	Mon	Tue	Wed	Thur	Fri	Sat
●	●	●		1	2	3
4	5	6	7	8	9	10
11	12	13	14	15	16	17
18	19	20	21	22	23	24
25	26	27	28	29	30	31

August						
Sun	Mon	Tue	Wed	Thur	Fri	Sat
1	2	3	4	5	6	7
8	9	10	11	12	13	14
15	16	17	18	19	20	21
22	23	24	25	26	27	28
29	30	31	●	●	●	●

September						
Sun	Mon	Tue	Wed	Thur	Fri	Sat
●	●	1	2	3	4	
5	6	7	8	9	10	11
12	13	14	15	16	17	18
19	20	21	22	23	24	25
26	27	28	29	30	●	●

October						
Sun	Mon	Tue	Wed	Thur	Fri	Sat
31	●	●	●	●	1	2
3	4	5	6	7	8	9
10	11	12	13	14	15	16
17	18	19	20	21	22	23
24	25	26	27	28	29	30

November						
Sun	Mon	Tue	Wed	Thur	Fri	Sat
1	2	3	4	5	6	
7	8	9	10	11	12	13
14	15	16	17	18	19	20
21	22	23	24	25	26	27
28	29	30	●	●	●	●

December						
Sun	Mon	Tue	Wed	Thur	Fri	Sat
●	●	1	2	3	4	
5	6	7	8	9	10	11
12	13	14	15	16	17	18
19	20	21	22	23	24	25
26	27	28	29	30	31	●

DECEMBER 2010 / JANUARY 2011

Thursday 30.....

.....

.....

Friday 31.....

.....

.....

Saturday 1.....

.....

.....

Sunday 2.....

.....

.....

Monday 3.....

.....

.....

Tuesday 4.....

.....

.....

Wednesday 5.....

.....

.....

January 2011						
Sun	Mon	Tue	Wed	Thur	Fri	Sat
30	31	●	●	●	●	1
2	3	4	5	6	7	8
9	10	11	12	13	14	15
16	17	18	19	20	21	22
23	24	25	26	27	28	29

February 2011						
Sun	Mon	Tue	Wed	Thur	Fri	Sat
●	●	1	2	3	4	5
6	7	8	9	10	11	12
13	14	15	16	17	18	19
20	21	22	23	24	25	26
27	28	●	●	●	●	●

March 2011						
Sun	Mon	Tue	Wed	Thur	Fri	Sat
●	●	1	2	3	4	5
6	7	8	9	10	11	12
13	14	15	16	17	18	19
20	21	22	23	24	25	26
27	28	29	30	31	●	●

April 2011						
Sun	Mon	Tue	Wed	Thur	Fri	Sat
●	●	●	●	1	2	
3	4	5	6	7	8	9
10	11	12	13	14	15	16
17	18	19	20	21	22	23
24	25	26	27	28	29	30

May 2011						
Sun	Mon	Tue	Wed	Thur	Fri	Sat
1	2	3	4	5	6	7
8	9	10	11	12	13	14
15	16	17	18	19	20	21
22	23	24	25	26	27	28
29	30	31	●	●	●	●

June 2011						
Sun	Mon	Tue	Wed	Thur	Fri	Sat
●	●	●	1	2	3	4
5	6	7	8	9	10	11
12	13	14	15	16	17	18
19	20	21	22	23	24	25
26	27	28	29	30	●	●

JANUARY 2011

Thursday 6.....

.....

.....

Friday 7.....

.....

.....

Saturday 8.....

.....

.....

Sunday 9.....

.....

.....

Monday 10.....

.....

.....

Tuesday 11.....

.....

.....

Wednesday 12.....

.....

.....

January 2011						
Sun	Mon	Tue	Wed	Thur	Fri	Sat
30	31	●	●	●	●	1
2	3	4	5	6	7	8
9	10	11	12	13	14	15
16	17	18	19	20	21	22
23	24	25	26	27	28	29

February 2011						
Sun	Mon	Tue	Wed	Thur	Fri	Sat
●	●	1	2	3	4	5
6	7	8	9	10	11	12
13	14	15	16	17	18	19
20	21	22	23	24	25	26
27	28	●	●	●	●	●

March 2011						
Sun	Mon	Tue	Wed	Thur	Fri	Sat
●	●	1	2	3	4	5
6	7	8	9	10	11	12
13	14	15	16	17	18	19
20	21	22	23	24	25	26
27	28	29	30	31	●	●

April 2011						
Sun	Mon	Tue	Wed	Thur	Fri	Sat
●	●	●	●	1	2	
3	4	5	6	7	8	9
10	11	12	13	14	15	16
17	18	19	20	21	22	23
24	25	26	27	28	29	30

May 2011						
Sun	Mon	Tue	Wed	Thur	Fri	Sat
1	2	3	4	5	6	7
8	9	10	11	12	13	14
15	16	17	18	19	20	21
22	23	24	25	26	27	28
29	30	31	●	●	●	●

June 2011						
Sun	Mon	Tue	Wed	Thur	Fri	Sat
●	●	●	1	2	3	4
5	6	7	8	9	10	11
12	13	14	15	16	17	18
19	20	21	22	23	24	25
26	27	28	29	30	●	●

JANUARY 2011

Thursday 13.....

.....

.....

Friday 14.....

.....

.....

Saturday 15.....

.....

.....

Sunday 16.....

.....

.....

Monday 17.....

.....

.....

Tuesday 18.....

.....

.....

Wednesday 19.....

.....

.....

January 2011						
Sun	Mon	Tue	Wed	Thur	Fri	Sat
30	31	●	●	●	●	1
2	3	4	5	6	7	8
9	10	11	12	13	14	15
16	17	18	19	20	21	22
23	24	25	26	27	28	29

February 2011						
Sun	Mon	Tue	Wed	Thur	Fri	Sat
●	●	1	2	3	4	5
6	7	8	9	10	11	12
13	14	15	16	17	18	19
20	21	22	23	24	25	26
27	28	●	●	●	●	●

March 2011						
Sun	Mon	Tue	Wed	Thur	Fri	Sat
●	●	1	2	3	4	5
6	7	8	9	10	11	12
13	14	15	16	17	18	19
20	21	22	23	24	25	26
27	28	29	30	31	●	●

April 2011						
Sun	Mon	Tue	Wed	Thur	Fri	Sat
●	●	●	●	●	1	2
3	4	5	6	7	8	9
10	11	12	13	14	15	16
17	18	19	20	21	22	23
24	25	26	27	28	29	30

May 2011						
Sun	Mon	Tue	Wed	Thur	Fri	Sat
1	2	3	4	5	6	7
8	9	10	11	12	13	14
15	16	17	18	19	20	21
22	23	24	25	26	27	28
29	30	31	●	●	●	●

June 2011						
Sun	Mon	Tue	Wed	Thur	Fri	Sat
●	●	●	1	2	3	4
5	6	7	8	9	10	11
12	13	14	15	16	17	18
19	20	21	22	23	24	25
26	27	28	29	30	●	●

FEBRUARY 2011

Thursday 3.....

.....

.....

Friday 4.....

.....

.....

Saturday 5.....

.....

.....

Sunday 6.....

.....

.....

Monday 7.....

.....

.....

Tuesday 8.....

.....

.....

Wednesday 9.....

.....

.....

January 2011

Sun	Mon	Tue	Wed	Thur	Fri	Sat
30	31	●	●	●	●	1
2	3	4	5	6	7	8
9	10	11	12	13	14	15
16	17	18	19	20	21	22
23	24	25	26	27	28	29

February 2011

Sun	Mon	Tue	Wed	Thur	Fri	Sat
●	●	1	2	3	4	5
6	7	8	9	10	11	12
13	14	15	16	17	18	19
20	21	22	23	24	25	26
27	28	●	●	●	●	●

March 2011

Sun	Mon	Tue	Wed	Thur	Fri	Sat
●	●	1	2	3	4	5
6	7	8	9	10	11	12
13	14	15	16	17	18	19
20	21	22	23	24	25	26
27	28	29	30	31	●	●

April 2011

Sun	Mon	Tue	Wed	Thur	Fri	Sat
●	●	●	●	●	1	2
3	4	5	6	7	8	9
10	11	12	13	14	15	16
17	18	19	20	21	22	23
24	25	26	27	28	29	30

May 2011

Sun	Mon	Tue	Wed	Thur	Fri	Sat
1	2	3	4	5	6	7
8	9	10	11	12	13	14
15	16	17	18	19	20	21
22	23	24	25	26	27	28
29	30	31	●	●	●	●

June 2011

Sun	Mon	Tue	Wed	Thur	Fri	Sat
●	●	●	1	2	3	4
5	6	7	8	9	10	11
12	13	14	15	16	17	18
19	20	21	22	23	24	25
26	27	28	29	30	●	●

FEBRUARY 2011

Thursday 10.....

Friday 11.....

Saturday 12.....

Sunday 13.....

Monday 14.....

Tuesday 15.....

Wednesday 16.....

January 2011

Sun	Mon	Tue	Wed	Thur	Fri	Sat
30	31	●	●	●	●	1
2	3	4	5	6	7	8
9	10	11	12	13	14	15
16	17	18	19	20	21	22
23	24	25	26	27	28	29

February 2011

Sun	Mon	Tue	Wed	Thur	Fri	Sat
●	●	1	2	3	4	5
6	7	8	9	10	11	12
13	14	15	16	17	18	19
20	21	22	23	24	25	26
27	28	●	●	●	●	●

March 2011

Sun	Mon	Tue	Wed	Thur	Fri	Sat
●	●	1	2	3	4	5
6	7	8	9	10	11	12
13	14	15	16	17	18	19
20	21	22	23	24	25	26
27	28	29	30	31	●	●

April 2011

Sun	Mon	Tue	Wed	Thur	Fri	Sat
●	●	●	●	●	1	2
3	4	5	6	7	8	9
10	11	12	13	14	15	16
17	18	19	20	21	22	23
24	25	26	27	28	29	30

May 2011

Sun	Mon	Tue	Wed	Thur	Fri	Sat
1	2	3	4	5	6	7
8	9	10	11	12	13	14
15	16	17	18	19	20	21
22	23	24	25	26	27	28
29	30	31	●	●	●	●

June 2011

Sun	Mon	Tue	Wed	Thur	Fri	Sat
●	●	●	1	2	3	4
5	6	7	8	9	10	11
12	13	14	15	16	17	18
19	20	21	22	23	24	25
26	27	28	29	30	●	●

FEBRUARY 2011

Thursday 17.....

.....

.....

Friday 18.....

.....

.....

Saturday 19.....

.....

.....

Sunday 20.....

.....

.....

Monday 21.....

.....

.....

Tuesday 22.....

.....

.....

Wednesday 23.....

.....

.....

January 2011						
Sun	Mon	Tue	Wed	Thur	Fri	Sat
30	31	●	●	●	●	1
2	3	4	5	6	7	8
9	10	11	12	13	14	15
16	17	18	19	20	21	22
23	24	25	26	27	28	29

February 2011						
Sun	Mon	Tue	Wed	Thur	Fri	Sat
●	●	1	2	3	4	5
6	7	8	9	10	11	12
13	14	15	16	17	18	19
20	21	22	23	24	25	26
27	28	●	●	●	●	●

March 2011						
Sun	Mon	Tue	Wed	Thur	Fri	Sat
●	●	1	2	3	4	5
6	7	8	9	10	11	12
13	14	15	16	17	18	19
20	21	22	23	24	25	26
27	28	29	30	31	●	●

April 2011						
Sun	Mon	Tue	Wed	Thur	Fri	Sat
●	●	●	●	●	1	2
3	4	5	6	7	8	9
10	11	12	13	14	15	16
17	18	19	20	21	22	23
24	25	26	27	28	29	30

May 2011						
Sun	Mon	Tue	Wed	Thur	Fri	Sat
1	2	3	4	5	6	7
8	9	10	11	12	13	14
15	16	17	18	19	20	21
22	23	24	25	26	27	28
29	30	31	●	●	●	●

June 2011						
Sun	Mon	Tue	Wed	Thur	Fri	Sat
●	●	●	1	2	3	4
5	6	7	8	9	10	11
12	13	14	15	16	17	18
19	20	21	22	23	24	25
26	27	28	29	30	●	●

FEBRUARY MARCY 2011

Thursday 24.....

.....

Friday 25.....

.....

Saturday 26.....

.....

Sunday 27.....

.....

Monday 28.....

.....

Tuesday 1.....

.....

Wednesday 2.....

.....

January 2011						
Sun	Mon	Tue	Wed	Thur	Fri	Sat
30	31	●	●	●	●	1
2	3	4	5	6	7	8
9	10	11	12	13	14	15
16	17	18	19	20	21	22
23	24	25	26	27	28	29

February 2011						
Sun	Mon	Tue	Wed	Thur	Fri	Sat
●	●	1	2	3	4	5
6	7	8	9	10	11	12
13	14	15	16	17	18	19
20	21	22	23	24	25	26
27	28	●	●	●	●	●

March 2011						
Sun	Mon	Tue	Wed	Thur	Fri	Sat
●	●	1	2	3	4	5
6	7	8	9	10	11	12
13	14	15	16	17	18	19
20	21	22	23	24	25	26
27	28	29	30	31	●	●

April 2011						
Sun	Mon	Tue	Wed	Thur	Fri	Sat
●	●	●	●	●	1	2
3	4	5	6	7	8	9
10	11	12	13	14	15	16
17	18	19	20	21	22	23
24	25	26	27	28	29	30

May 2011						
Sun	Mon	Tue	Wed	Thur	Fri	Sat
1	2	3	4	5	6	7
8	9	10	11	12	13	14
15	16	17	18	19	20	21
22	23	24	25	26	27	28
29	30	31	●	●	●	●

June 2011						
Sun	Mon	Tue	Wed	Thur	Fri	Sat
●	●	●	1	2	3	4
5	6	7	8	9	10	11
12	13	14	15	16	17	18
19	20	21	22	23	24	25
26	27	28	29	30	●	●

MARCY 2011

Thursday 3.....

Friday 4.....

Saturday 5.....

Sunday 6.....

Monday 7.....

Tuesday 8.....

Wednesday 9.....

January 2011

Sun	Mon	Tue	Wed	Thur	Fri	Sat
30	31	●	●	●	●	1
2	3	4	5	6	7	8
9	10	11	12	13	14	15
16	17	18	19	20	21	22
23	24	25	26	27	28	29

February 2011

Sun	Mon	Tue	Wed	Thur	Fri	Sat
●	●	1	2	3	4	5
6	7	8	9	10	11	12
13	14	15	16	17	18	19
20	21	22	23	24	25	26
27	28	●	●	●	●	●

March 2011

Sun	Mon	Tue	Wed	Thur	Fri	Sat
●	●	1	2	3	4	5
6	7	8	9	10	11	12
13	14	15	16	17	18	19
20	21	22	23	24	25	26
27	28	29	30	31	●	●

April 2011

Sun	Mon	Tue	Wed	Thur	Fri	Sat
●	●	●	●	●	1	2
3	4	5	6	7	8	9
10	11	12	13	14	15	16
17	18	19	20	21	22	23
24	25	26	27	28	29	30

May 2011

Sun	Mon	Tue	Wed	Thur	Fri	Sat
1	2	3	4	5	6	7
8	9	10	11	12	13	14
15	16	17	18	19	20	21
22	23	24	25	26	27	28
29	30	31	●	●	●	●

June 2011

Sun	Mon	Tue	Wed	Thur	Fri	Sat
●	●	●	1	2	3	4
5	6	7	8	9	10	11
12	13	14	15	16	17	18
19	20	21	22	23	24	25
26	27	28	29	30	●	●

MARCY 2011

Thursday 10.....

Friday 11.....

Saturday 12.....

Sunday 13.....

Monday 14.....

Tuesday 15.....

Wednesday 16.....

January 2011

Sun	Mon	Tue	Wed	Thur	Fri	Sat
30	31	●	●	●	●	1
2	3	4	5	6	7	8
9	10	11	12	13	14	15
16	17	18	19	20	21	22
23	24	25	26	27	28	29

February 2011

Sun	Mon	Tue	Wed	Thur	Fri	Sat
●	●	1	2	3	4	5
6	7	8	9	10	11	12
13	14	15	16	17	18	19
20	21	22	23	24	25	26
27	28	●	●	●	●	●

March 2011

Sun	Mon	Tue	Wed	Thur	Fri	Sat
●	●	1	2	3	4	5
6	7	8	9	10	11	12
13	14	15	16	17	18	19
20	21	22	23	24	25	26
27	28	29	30	31	●	●

April 2011

Sun	Mon	Tue	Wed	Thur	Fri	Sat
●	●	●	●	●	1	2
3	4	5	6	7	8	9
10	11	12	13	14	15	16
17	18	19	20	21	22	23
24	25	26	27	28	29	30

May 2011

Sun	Mon	Tue	Wed	Thur	Fri	Sat
1	2	3	4	5	6	7
8	9	10	11	12	13	14
15	16	17	18	19	20	21
22	23	24	25	26	27	28
29	30	31	●	●	●	●

June 2011

Sun	Mon	Tue	Wed	Thur	Fri	Sat
●	●	●	1	2	3	4
5	6	7	8	9	10	11
12	13	14	15	16	17	18
19	20	21	22	23	24	25
26	27	28	29	30	●	●

MARCH 2011

Thursday 17.....

.....

.....

Friday 18.....

.....

.....

Saturday 19.....

.....

.....

Sunday 20.....

.....

.....

Monday 21.....

.....

.....

Tuesday 22.....

.....

.....

Wednesday 23.....

.....

.....

January 2011						
Sun	Mon	Tue	Wed	Thur	Fri	Sat
30	31	●	●	●	●	1
2	3	4	5	6	7	8
9	10	11	12	13	14	15
16	17	18	19	20	21	22
23	24	25	26	27	28	29

February 2011						
Sun	Mon	Tue	Wed	Thur	Fri	Sat
●	●	1	2	3	4	5
6	7	8	9	10	11	12
13	14	15	16	17	18	19
20	21	22	23	24	25	26
27	28	●	●	●	●	●

March 2011						
Sun	Mon	Tue	Wed	Thur	Fri	Sat
●	●	1	2	3	4	5
6	7	8	9	10	11	12
13	14	15	16	17	18	19
20	21	22	23	24	25	26
27	28	29	30	31	●	●

April 2011						
Sun	Mon	Tue	Wed	Thur	Fri	Sat
●	●	●	●	●	1	2
3	4	5	6	7	8	9
10	11	12	13	14	15	16
17	18	19	20	21	22	23
24	25	26	27	28	29	30

May 2011						
Sun	Mon	Tue	Wed	Thur	Fri	Sat
1	2	3	4	5	6	7
8	9	10	11	12	13	14
15	16	17	18	19	20	21
22	23	24	25	26	27	28
29	30	31	●	●	●	●

June 2011						
Sun	Mon	Tue	Wed	Thur	Fri	Sat
●	●	●	1	2	3	4
5	6	7	8	9	10	11
12	13	14	15	16	17	18
19	20	21	22	23	24	25
26	27	28	29	30	●	●

MARCY 2011

Thursday 24.....

.....

.....

Friday 25.....

.....

.....

Saturday 26.....

.....

.....

Sunday 27.....

.....

.....

Monday 28.....

.....

.....

Tuesday 29.....

.....

.....

Wednesday 30.....

.....

.....

January 2011

Sun	Mon	Tue	Wed	Thur	Fri	Sat
30	31	●	●	●	●	1
2	3	4	5	6	7	8
9	10	11	12	13	14	15
16	17	18	19	20	21	22
23	24	25	26	27	28	29

February 2011

Sun	Mon	Tue	Wed	Thur	Fri	Sat
●	●	1	2	3	4	5
6	7	8	9	10	11	12
13	14	15	16	17	18	19
20	21	22	23	24	25	26
27	28	●	●	●	●	●

March 2011

Sun	Mon	Tue	Wed	Thur	Fri	Sat
●	●	1	2	3	4	5
6	7	8	9	10	11	12
13	14	15	16	17	18	19
20	21	22	23	24	25	26
27	28	29	30	31	●	●

April 2011

Sun	Mon	Tue	Wed	Thur	Fri	Sat
●	●	●	●	●	1	2
3	4	5	6	7	8	9
10	11	12	13	14	15	16
17	18	19	20	21	22	23
24	25	26	27	28	29	30

May 2011

Sun	Mon	Tue	Wed	Thur	Fri	Sat
1	2	3	4	5	6	7
8	9	10	11	12	13	14
15	16	17	18	19	20	21
22	23	24	25	26	27	28
29	30	31	●	●	●	●

June 2011

Sun	Mon	Tue	Wed	Thur	Fri	Sat
●	●	●	1	2	3	4
5	6	7	8	9	10	11
12	13	14	15	16	17	18
19	20	21	22	23	24	25
26	27	28	29	30	●	●

MARCY / APRIL 2011

Thursday 31.....

.....

.....

Friday 1.....

.....

.....

Saturday 2.....

.....

.....

Sunday 3.....

.....

.....

Monday 4.....

.....

.....

Tuesday 5.....

.....

.....

Wednesday 6.....

.....

.....

January 2011

Sun	Mon	Tue	Wed	Thur	Fri	Sat
30	31	●	●	●	●	1
2	3	4	5	6	7	8
9	10	11	12	13	14	15
16	17	18	19	20	21	22
23	24	25	26	27	28	29

February 2011

Sun	Mon	Tue	Wed	Thur	Fri	Sat
●	●	1	2	3	4	5
6	7	8	9	10	11	12
13	14	15	16	17	18	19
20	21	22	23	24	25	26
27	28	●	●	●	●	●

March 2011

Sun	Mon	Tue	Wed	Thur	Fri	Sat
●	●	1	2	3	4	5
6	7	8	9	10	11	12
13	14	15	16	17	18	19
20	21	22	23	24	25	26
27	28	29	30	31	●	●

April 2011

Sun	Mon	Tue	Wed	Thur	Fri	Sat
●	●	●	●	●	1	2
3	4	5	6	7	8	9
10	11	12	13	14	15	16
17	18	19	20	21	22	23
24	25	26	27	28	29	30

May 2011

Sun	Mon	Tue	Wed	Thur	Fri	Sat
1	2	3	4	5	6	7
8	9	10	11	12	13	14
15	16	17	18	19	20	21
22	23	24	25	26	27	28
29	30	31	●	●	●	●

June 2011

Sun	Mon	Tue	Wed	Thur	Fri	Sat
●	●	●	1	2	3	4
5	6	7	8	9	10	11
12	13	14	15	16	17	18
19	20	21	22	23	24	25
26	27	28	29	30	●	●

APRIL 2011

Thursday 7.....

.....

.....

Friday 8.....

.....

.....

Saturday 9.....

.....

.....

Sunday 10.....

.....

.....

Monday 11.....

.....

.....

Tuesday 12.....

.....

.....

Wednesday 13.....

.....

.....

January 2011						
Sun	Mon	Tue	Wed	Thur	Fri	Sat
30	31	●	●	●	●	1
2	3	4	5	6	7	8
9	10	11	12	13	14	15
16	17	18	19	20	21	22
23	24	25	26	27	28	29

February 2011						
Sun	Mon	Tue	Wed	Thur	Fri	Sat
●	1	2	3	4	5	6
7	8	9	10	11	12	13
14	15	16	17	18	19	20
21	22	23	24	25	26	27
28	●	●	●	●	●	●

March 2011						
Sun	Mon	Tue	Wed	Thur	Fri	Sat
●	1	2	3	4	5	6
7	8	9	10	11	12	13
14	15	16	17	18	19	20
21	22	23	24	25	26	27
28	29	30	31	●	●	●

April 2011						
Sun	Mon	Tue	Wed	Thur	Fri	Sat
●	●	●	●	●	1	2
3	4	5	6	7	8	9
10	11	12	13	14	15	16
17	18	19	20	21	22	23
24	25	26	27	28	29	30

May 2011						
Sun	Mon	Tue	Wed	Thur	Fri	Sat
1	2	3	4	5	6	7
8	9	10	11	12	13	14
15	16	17	18	19	20	21
22	23	24	25	26	27	28
29	30	31	●	●	●	●

June 2011						
Sun	Mon	Tue	Wed	Thur	Fri	Sat
●	●	●	1	2	3	4
5	6	7	8	9	10	11
12	13	14	15	16	17	18
19	20	21	22	23	24	25
26	27	28	29	30	●	●

APRIL 2011

Thursday 14.....

.....

Friday 15.....

.....

Saturday 16.....

.....

Sunday 17.....

.....

Monday 18.....

.....

Tuesday 19.....

.....

Wednesday 20.....

.....

January 2011						
Sun	Mon	Tue	Wed	Thur	Fri	Sat
30	31	●	●	●	●	1
2	3	4	5	6	7	8
9	10	11	12	13	14	15
16	17	18	19	20	21	22
23	24	25	26	27	28	29

February 2011						
Sun	Mon	Tue	Wed	Thur	Fri	Sat
●	●	1	2	3	4	5
6	7	8	9	10	11	12
13	14	15	16	17	18	19
20	21	22	23	24	25	26
27	28	●	●	●	●	●

March 2011						
Sun	Mon	Tue	Wed	Thur	Fri	Sat
●	●	1	2	3	4	5
6	7	8	9	10	11	12
13	14	15	16	17	18	19
20	21	22	23	24	25	26
27	28	29	30	31	●	●

April 2011						
Sun	Mon	Tue	Wed	Thur	Fri	Sat
●	●	●	●	●	1	2
3	4	5	6	7	8	9
10	11	12	13	14	15	16
17	18	19	20	21	22	23
24	25	26	27	28	29	30

May 2011						
Sun	Mon	Tue	Wed	Thur	Fri	Sat
1	2	3	4	5	6	7
8	9	10	11	12	13	14
15	16	17	18	19	20	21
22	23	24	25	26	27	28
29	30	31	●	●	●	●

June 2011						
Sun	Mon	Tue	Wed	Thur	Fri	Sat
●	●	●	1	2	3	4
5	6	7	8	9	10	11
12	13	14	15	16	17	18
19	20	21	22	23	24	25
26	27	28	29	30	●	●

APRIL 2011

Thursday 21.....

.....

.....

Friday 22.....

.....

.....

Saturday 23.....

.....

.....

Sunday 24.....

.....

.....

Monday 25.....

.....

.....

Tuesday 26.....

.....

.....

Wednesday 27.....

.....

.....

January 2011						
Sun	Mon	Tue	Wed	Thur	Fri	Sat
30	31	●	●	●	●	1
2	3	4	5	6	7	8
9	10	11	12	13	14	15
16	17	18	19	20	21	22
23	24	25	26	27	28	29

February 2011						
Sun	Mon	Tue	Wed	Thur	Fri	Sat
●	●	1	2	3	4	5
6	7	8	9	10	11	12
13	14	15	16	17	18	19
20	21	22	23	24	25	26
27	28	●	●	●	●	●

March 2011						
Sun	Mon	Tue	Wed	Thur	Fri	Sat
●	●	1	2	3	4	5
6	7	8	9	10	11	12
13	14	15	16	17	18	19
20	21	22	23	24	25	26
27	28	29	30	31	●	●

April 2011						
Sun	Mon	Tue	Wed	Thur	Fri	Sat
●	●	●	●	●	1	2
3	4	5	6	7	8	9
10	11	12	13	14	15	16
17	18	19	20	21	22	23
24	25	26	27	28	29	30

May 2011						
Sun	Mon	Tue	Wed	Thur	Fri	Sat
1	2	3	4	5	6	7
8	9	10	11	12	13	14
15	16	17	18	19	20	21
22	23	24	25	26	27	28
29	30	31	●	●	●	●

June 2011						
Sun	Mon	Tue	Wed	Thur	Fri	Sat
●	●	●	1	2	3	4
5	6	7	8	9	10	11
12	13	14	15	16	17	18
19	20	21	22	23	24	25
26	27	28	29	30	●	●

APRIL / MAY 2011

Thursday 28.....

.....

.....

Friday 29.....

.....

.....

Saturday 30.....

.....

.....

Sunday 1.....

.....

.....

Monday 2.....

.....

.....

Tuesday 3.....

.....

.....

Wednesday 4.....

.....

.....

January 2011

Sun	Mon	Tue	Wed	Thur	Fri	Sat
30	31	●	●	●	●	1
2	3	4	5	6	7	8
9	10	11	12	13	14	15
16	17	18	19	20	21	22
23	24	25	26	27	28	29

February 2011

Sun	Mon	Tue	Wed	Thur	Fri	Sat
●	1	2	3	4	5	6
7	8	9	10	11	12	13
14	15	16	17	18	19	20
21	22	23	24	25	26	27
28	●	●	●	●	●	●

March 2011

Sun	Mon	Tue	Wed	Thur	Fri	Sat
●	1	2	3	4	5	6
7	8	9	10	11	12	13
14	15	16	17	18	19	20
21	22	23	24	25	26	27
28	29	30	31	●	●	●

April 2011

Sun	Mon	Tue	Wed	Thur	Fri	Sat
●	●	●	●	●	1	2
3	4	5	6	7	8	9
10	11	12	13	14	15	16
17	18	19	20	21	22	23
24	25	26	27	28	29	30

May 2011

Sun	Mon	Tue	Wed	Thur	Fri	Sat
1	2	3	4	5	6	7
8	9	10	11	12	13	14
15	16	17	18	19	20	21
22	23	24	25	26	27	28
29	30	31	●	●	●	●

June 2011

Sun	Mon	Tue	Wed	Thur	Fri	Sat
●	●	1	2	3	4	5
6	7	8	9	10	11	12
13	14	15	16	17	18	19
20	21	22	23	24	25	26
27	28	29	30	●	●	●

MAY 2011

Thursday 5.....

.....

.....

Friday 6.....

.....

.....

Saturday 7.....

.....

.....

Sunday 8.....

.....

.....

Monday 9.....

.....

.....

Tuesday 10.....

.....

.....

Wednesday 11.....

.....

.....

January 2011						
Sun	Mon	Tue	Wed	Thur	Fri	Sat
30	31	●	●	●	●	1
2	3	4	5	6	7	8
9	10	11	12	13	14	15
16	17	18	19	20	21	22
23	24	25	26	27	28	29

February 2011						
Sun	Mon	Tue	Wed	Thur	Fri	Sat
●	●	1	2	3	4	5
6	7	8	9	10	11	12
13	14	15	16	17	18	19
20	21	22	23	24	25	26
27	28	●	●	●	●	●

March 2011						
Sun	Mon	Tue	Wed	Thur	Fri	Sat
●	●	1	2	3	4	5
6	7	8	9	10	11	12
13	14	15	16	17	18	19
20	21	22	23	24	25	26
27	28	29	30	31	●	●

April 2011						
Sun	Mon	Tue	Wed	Thur	Fri	Sat
●	●	●	●	●	1	2
3	4	5	6	7	8	9
10	11	12	13	14	15	16
17	18	19	20	21	22	23
24	25	26	27	28	29	30

May 2011						
Sun	Mon	Tue	Wed	Thur	Fri	Sat
1	2	3	4	5	6	7
8	9	10	11	12	13	14
15	16	17	18	19	20	21
22	23	24	25	26	27	28
29	30	31	●	●	●	●

June 2011						
Sun	Mon	Tue	Wed	Thur	Fri	Sat
●	●	●	1	2	3	4
5	6	7	8	9	10	11
12	13	14	15	16	17	18
19	20	21	22	23	24	25
26	27	28	29	30	●	●

MAY 2011

Thursday 12.....

.....

.....

Friday 13.....

.....

.....

Saturday 14.....

.....

.....

Sunday 15.....

.....

.....

Monday 16.....

.....

.....

Tuesday 17.....

.....

.....

Wednesday 18.....

.....

.....

January 2011

Sun	Mon	Tue	Wed	Thur	Fri	Sat
30	31	●	●	●	●	1
2	3	4	5	6	7	8
9	10	11	12	13	14	15
16	17	18	19	20	21	22
23	24	25	26	27	28	29

February 2011

Sun	Mon	Tue	Wed	Thur	Fri	Sat
●	●	1	2	3	4	5
6	7	8	9	10	11	12
13	14	15	16	17	18	19
20	21	22	23	24	25	26
27	28	●	●	●	●	●

March 2011

Sun	Mon	Tue	Wed	Thur	Fri	Sat
●	●	1	2	3	4	5
6	7	8	9	10	11	12
13	14	15	16	17	18	19
20	21	22	23	24	25	26
27	28	29	30	31	●	●

April 2011

Sun	Mon	Tue	Wed	Thur	Fri	Sat
●	●	●	●	●	1	2
3	4	5	6	7	8	9
10	11	12	13	14	15	16
17	18	19	20	21	22	23
24	25	26	27	28	29	30

May 2011

Sun	Mon	Tue	Wed	Thur	Fri	Sat
1	2	3	4	5	6	7
8	9	10	11	12	13	14
15	16	17	18	19	20	21
22	23	24	25	26	27	28
29	30	31	●	●	●	●

June 2011

Sun	Mon	Tue	Wed	Thur	Fri	Sat
●	●	●	1	2	3	4
5	6	7	8	9	10	11
12	13	14	15	16	17	18
19	20	21	22	23	24	25
26	27	28	29	30	●	●

MAY 2011

Thursday 19.....

.....

.....

Friday 20.....

.....

.....

Saturday 21.....

.....

.....

Sunday 22.....

.....

.....

Monday 23.....

.....

.....

Tuesday 24.....

.....

.....

Wednesday 25.....

.....

.....

January 2011						
Sun	Mon	Tue	Wed	Thur	Fri	Sat
30	31	●	●	●	●	1
2	3	4	5	6	7	8
9	10	11	12	13	14	15
16	17	18	19	20	21	22
23	24	25	26	27	28	29

February 2011						
Sun	Mon	Tue	Wed	Thur	Fri	Sat
●	●	1	2	3	4	5
6	7	8	9	10	11	12
13	14	15	16	17	18	19
20	21	22	23	24	25	26
27	28	●	●	●	●	●

March 2011						
Sun	Mon	Tue	Wed	Thur	Fri	Sat
●	●	1	2	3	4	5
6	7	8	9	10	11	12
13	14	15	16	17	18	19
20	21	22	23	24	25	26
27	28	29	30	31	●	●

April 2011						
Sun	Mon	Tue	Wed	Thur	Fri	Sat
●	●	●	●	●	1	2
3	4	5	6	7	8	9
10	11	12	13	14	15	16
17	18	19	20	21	22	23
24	25	26	27	28	29	30

May 2011						
Sun	Mon	Tue	Wed	Thur	Fri	Sat
1	2	3	4	5	6	7
8	9	10	11	12	13	14
15	16	17	18	19	20	21
22	23	24	25	26	27	28
29	30	31	●	●	●	●

June 2011						
Sun	Mon	Tue	Wed	Thur	Fri	Sat
●	●	●	1	2	3	4
5	6	7	8	9	10	11
12	13	14	15	16	17	18
19	20	21	22	23	24	25
26	27	28	29	30	●	●

MAY / JUNE 2011

Thursday 26.....

.....

.....

Friday 27.....

.....

.....

Saturday 28.....

.....

.....

Sunday 29.....

.....

.....

Monday 30.....

.....

.....

Tuesday 31.....

.....

.....

Wednesday 1.....

.....

.....

January 2011						
Sun	Mon	Tue	Wed	Thur	Fri	Sat
30	31	●	●	●	●	1
2	3	4	5	6	7	8
9	10	11	12	13	14	15
16	17	18	19	20	21	22
23	24	25	26	27	28	29

February 2011						
Sun	Mon	Tue	Wed	Thur	Fri	Sat
●	●	1	2	3	4	5
6	7	8	9	10	11	12
13	14	15	16	17	18	19
20	21	22	23	24	25	26
27	28	●	●	●	●	●

March 2011						
Sun	Mon	Tue	Wed	Thur	Fri	Sat
●	●	1	2	3	4	5
6	7	8	9	10	11	12
13	14	15	16	17	18	19
20	21	22	23	24	25	26
27	28	29	30	31	●	●

April 2011						
Sun	Mon	Tue	Wed	Thur	Fri	Sat
●	●	●	●	●	1	2
3	4	5	6	7	8	9
10	11	12	13	14	15	16
17	18	19	20	21	22	23
24	25	26	27	28	29	30

May 2011						
Sun	Mon	Tue	Wed	Thur	Fri	Sat
1	2	3	4	5	6	7
8	9	10	11	12	13	14
15	16	17	18	19	20	21
22	23	24	25	26	27	28
29	30	31	●	●	●	●

June 2011						
Sun	Mon	Tue	Wed	Thur	Fri	Sat
●	●	●	1	2	3	4
5	6	7	8	9	10	11
12	13	14	15	16	17	18
19	20	21	22	23	24	25
26	27	28	29	30	●	●

JUNE 2011

Thursday 2.....

.....

.....

Friday 3.....

.....

.....

Saturday 4.....

.....

.....

Sunday 5.....

.....

.....

Monday 6.....

.....

.....

Tuesday 7.....

.....

.....

Wednesday 8.....

.....

.....

January 2011

Sun	Mon	Tue	Wed	Thur	Fri	Sat
30	31	●	●	●	●	1
2	3	4	5	6	7	8
9	10	11	12	13	14	15
16	17	18	19	20	21	22
23	24	25	26	27	28	29

February 2011

Sun	Mon	Tue	Wed	Thur	Fri	Sat
●	●	1	2	3	4	5
6	7	8	9	10	11	12
13	14	15	16	17	18	19
20	21	22	23	24	25	26
27	28	●	●	●	●	●

March 2011

Sun	Mon	Tue	Wed	Thur	Fri	Sat
●	●	1	2	3	4	5
6	7	8	9	10	11	12
13	14	15	16	17	18	19
20	21	22	23	24	25	26
27	28	29	30	31	●	●

April 2011

Sun	Mon	Tue	Wed	Thur	Fri	Sat
●	●	●	●	●	1	2
3	4	5	6	7	8	9
10	11	12	13	14	15	16
17	18	19	20	21	22	23
24	25	26	27	28	29	30

May 2011

Sun	Mon	Tue	Wed	Thur	Fri	Sat
1	2	3	4	5	6	7
8	9	10	11	12	13	14
15	16	17	18	19	20	21
22	23	24	25	26	27	28
29	30	31	●	●	●	●

June 2011

Sun	Mon	Tue	Wed	Thur	Fri	Sat
●	●	●	1	2	3	4
5	6	7	8	9	10	11
12	13	14	15	16	17	18
19	20	21	22	23	24	25
26	27	28	29	30	●	●

JUNE 2011

Thursday 9.....

Friday 10.....

Saturday 11.....

Sunday 12.....

Monday 13.....

Tuesday 14.....

Wednesday 15.....

January 2011

Sun	Mon	Tue	Wed	Thur	Fri	Sat
30	31	●	●	●	●	1
2	3	4	5	6	7	8
9	10	11	12	13	14	15
16	17	18	19	20	21	22
23	24	25	26	27	28	29

February 2011

Sun	Mon	Tue	Wed	Thur	Fri	Sat
●	●	1	2	3	4	5
6	7	8	9	10	11	12
13	14	15	16	17	18	19
20	21	22	23	24	25	26
27	28	●	●	●	●	●

March 2011

Sun	Mon	Tue	Wed	Thur	Fri	Sat
●	●	1	2	3	4	5
6	7	8	9	10	11	12
13	14	15	16	17	18	19
20	21	22	23	24	25	26
27	28	29	30	31	●	●

April 2011

Sun	Mon	Tue	Wed	Thur	Fri	Sat
●	●	●	●	●	1	2
3	4	5	6	7	8	9
10	11	12	13	14	15	16
17	18	19	20	21	22	23
24	25	26	27	28	29	30

May 2011

Sun	Mon	Tue	Wed	Thur	Fri	Sat
1	2	3	4	5	6	7
8	9	10	11	12	13	14
15	16	17	18	19	20	21
22	23	24	25	26	27	28
29	30	31	●	●	●	●

June 2011

Sun	Mon	Tue	Wed	Thur	Fri	Sat
●	●	●	1	2	3	4
5	6	7	8	9	10	11
12	13	14	15	16	17	18
19	20	21	22	23	24	25
26	27	28	29	30	●	●

JUNE 2011

Thursday 16.....

.....

.....

Friday 17.....

.....

.....

Saturday 18.....

.....

.....

Sunday 19.....

.....

.....

Monday 20.....

.....

.....

Tuesday 21.....

.....

.....

Wednesday 22.....

.....

.....

January 2011						
Sun	Mon	Tue	Wed	Thur	Fri	Sat
30	31	●	●	●	●	1
2	3	4	5	6	7	8
9	10	11	12	13	14	15
16	17	18	19	20	21	22
23	24	25	26	27	28	29

February 2011						
Sun	Mon	Tue	Wed	Thur	Fri	Sat
●	●	1	2	3	4	5
6	7	8	9	10	11	12
13	14	15	16	17	18	19
20	21	22	23	24	25	26
27	28	●	●	●	●	●

March 2011						
Sun	Mon	Tue	Wed	Thur	Fri	Sat
●	●	1	2	3	4	5
6	7	8	9	10	11	12
13	14	15	16	17	18	19
20	21	22	23	24	25	26
27	28	29	30	31	●	●

April 2011						
Sun	Mon	Tue	Wed	Thur	Fri	Sat
●	●	●	●	●	1	2
3	4	5	6	7	8	9
10	11	12	13	14	15	16
17	18	19	20	21	22	23
24	25	26	27	28	29	30

May 2011						
Sun	Mon	Tue	Wed	Thur	Fri	Sat
1	2	3	4	5	6	7
8	9	10	11	12	13	14
15	16	17	18	19	20	21
22	23	24	25	26	27	28
29	30	31	●	●	●	●

June 2011						
Sun	Mon	Tue	Wed	Thur	Fri	Sat
●	●	●	1	2	3	4
5	6	7	8	9	10	11
12	13	14	15	16	17	18
19	20	21	22	23	24	25
26	27	28	29	30	●	●

JUNE 2011

Thursday 23.....

.....

Friday 24.....

.....

Saturday 25.....

.....

Sunday 26.....

.....

Monday 27.....

.....

Tuesday 28.....

.....

Wednesday 29.....

.....

January 2011						
Sun	Mon	Tue	Wed	Thur	Fri	Sat
30	31	●	●	●	●	1
2	3	4	5	6	7	8
9	10	11	12	13	14	15
16	17	18	19	20	21	22
23	24	25	26	27	28	29

February 2011						
Sun	Mon	Tue	Wed	Thur	Fri	Sat
●	1	2	3	4	5	6
7	8	9	10	11	12	13
14	15	16	17	18	19	20
21	22	23	24	25	26	27
28	●	●	●	●	●	●

March 2011						
Sun	Mon	Tue	Wed	Thur	Fri	Sat
●	1	2	3	4	5	6
7	8	9	10	11	12	13
14	15	16	17	18	19	20
21	22	23	24	25	26	27
28	29	30	31	●	●	●

April 2011						
Sun	Mon	Tue	Wed	Thur	Fri	Sat
●	●	●	●	1	2	3
4	5	6	7	8	9	10
11	12	13	14	15	16	17
18	19	20	21	22	23	24
25	26	27	28	29	30	●

May 2011						
Sun	Mon	Tue	Wed	Thur	Fri	Sat
1	2	3	4	5	6	7
8	9	10	11	12	13	14
15	16	17	18	19	20	21
22	23	24	25	26	27	28
29	30	31	●	●	●	●

June 2011						
Sun	Mon	Tue	Wed	Thur	Fri	Sat
●	●	1	2	3	4	5
6	7	8	9	10	11	12
13	14	15	16	17	18	19
20	21	22	23	24	25	26
27	28	29	30	●	●	●

JUNE / JULY 2011

Thursday 30.....

Friday 1.....

Saturday 2.....

Sunday 3.....

Monday 4.....

Tuesday 5.....

Wednesday 6.....

January 2011

Sun	Mon	Tue	Wed	Thur	Fri	Sat
30	31	●	●	●	●	1
2	3	4	5	6	7	8
9	10	11	12	13	14	15
16	17	18	19	20	21	22
23	24	25	26	27	28	29

February 2011

Sun	Mon	Tue	Wed	Thur	Fri	Sat
●	●	1	2	3	4	5
6	7	8	9	10	11	12
13	14	15	16	17	18	19
20	21	22	23	24	25	26
27	28	●	●	●	●	●

March 2011

Sun	Mon	Tue	Wed	Thur	Fri	Sat
●	●	1	2	3	4	5
6	7	8	9	10	11	12
13	14	15	16	17	18	19
20	21	22	23	24	25	26
27	28	29	30	31	●	●

April 2011

Sun	Mon	Tue	Wed	Thur	Fri	Sat
●	●	●	●	●	1	2
3	4	5	6	7	8	9
10	11	12	13	14	15	16
17	18	19	20	21	22	23
24	25	26	27	28	29	30

May 2011

Sun	Mon	Tue	Wed	Thur	Fri	Sat
1	2	3	4	5	6	7
8	9	10	11	12	13	14
15	16	17	18	19	20	21
22	23	24	25	26	27	28
29	30	31	●	●	●	●

June 2011

Sun	Mon	Tue	Wed	Thur	Fri	Sat
●	●	●	1	2	3	4
5	6	7	8	9	10	11
12	13	14	15	16	17	18
19	20	21	22	23	24	25
26	27	28	29	30	●	●

JULY 2011

Thursday 7.....

Friday 8.....

Saturday 9.....

Sunday 10.....

Monday 11.....

Tuesday 12.....

Wednesday 13.....

January 2011

Sun	Mon	Tue	Wed	Thur	Fri	Sat
30	31	●	●	●	●	1
2	3	4	5	6	7	8
9	10	11	12	13	14	15
16	17	18	19	20	21	22
23	24	25	26	27	28	29

February 2011

Sun	Mon	Tue	Wed	Thur	Fri	Sat
●	●	1	2	3	4	5
6	7	8	9	10	11	12
13	14	15	16	17	18	19
20	21	22	23	24	25	26
27	28	●	●	●	●	●

March 2011

Sun	Mon	Tue	Wed	Thur	Fri	Sat
●	●	1	2	3	4	5
6	7	8	9	10	11	12
13	14	15	16	17	18	19
20	21	22	23	24	25	26
27	28	29	30	31	●	●

April 2011

Sun	Mon	Tue	Wed	Thur	Fri	Sat
●	●	●	●	●	1	2
3	4	5	6	7	8	9
10	11	12	13	14	15	16
17	18	19	20	21	22	23
24	25	26	27	28	29	30

May 2011

Sun	Mon	Tue	Wed	Thur	Fri	Sat
1	2	3	4	5	6	7
8	9	10	11	12	13	14
15	16	17	18	19	20	21
22	23	24	25	26	27	28
29	30	31	●	●	●	●

June 2011

Sun	Mon	Tue	Wed	Thur	Fri	Sat
●	●	●	1	2	3	4
5	6	7	8	9	10	11
12	13	14	15	16	17	18
19	20	21	22	23	24	25
26	27	28	29	30	●	●