



# ADAMAWA STATE UNIVERSITY

P.M.B. 25, Mubi Nigeria

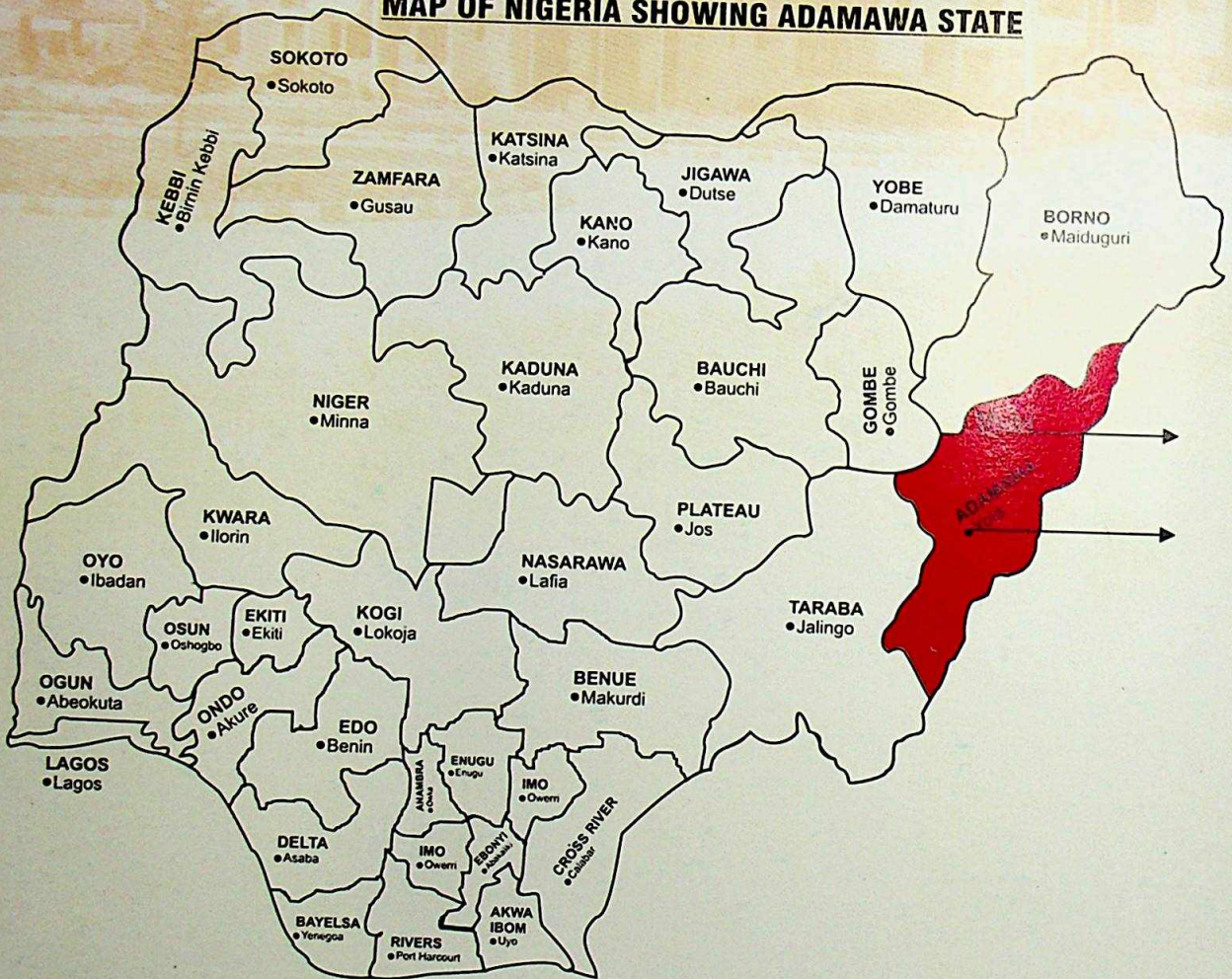
Website: [www.adsu.edu.ng](http://www.adsu.edu.ng) E-mail: [info@adsu.edu.ng](mailto:info@adsu.edu.ng)

## Information *Brochure*

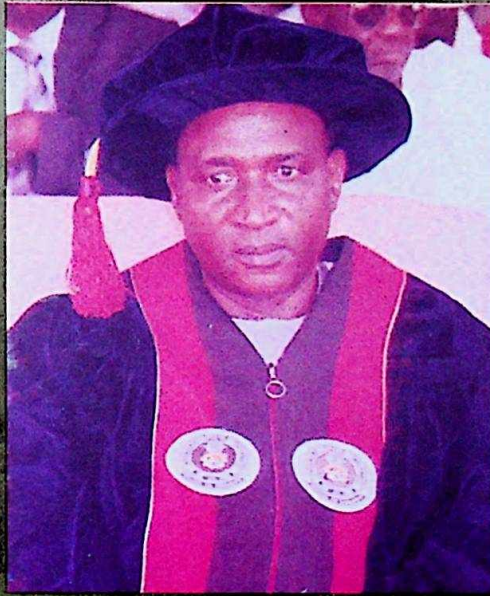


Motto: Education for Development

# MAP OF NIGERIA SHOWING ADAMAWA STATE



**NIGERIA GOVERNORS' FORUM  
LIBRARY**



## Welcome

Since 2002 when Adamawa State University, Mubi was established, the Institution has been striving to meet the stated goal of providing "Education for Development".

However, the University is concerned with its commitment to the immediate environment, mindful of our position as a tertiary Institution of learning with universal responsibilities. We are therefore working towards establishing a world class University that addresses our local problems within the context of intellectualism that is broad based and international in outlook.

We have therefore defined our purpose, as a citadel of learning geared towards achieving the ideals of developing academic and professional abilities of our staff and students, to give them competitive advantage in an ever changing world.

Our focus is now geared towards Agriculture, which is the main stay of our people and ICT which is the future path to human development. Ours is a commitment to development within the context of present realities and the expectation of the future.

In this brief brochure we have attempted to present some of the necessary information that will be helpful in making informed decisions on matters relating to our triple mandate of Teaching, Research and Community services. It gives you a brief on our uniqueness as a very promising University located in a serene, peaceful and accommodating environment.

Welcome and happy reading.

Alkasum Abba  
**Vice-Chancellor**

## STRUCTURE AND FUNCTIONS

Adamawa State University is a Public University owned by the Adamawa State Government. However, the law establishing the University provides for various funding arrangements including attracting DONOR support through grants and foundations.

The Governing Council is the major policy making body responsible for the running of the University. It comprises a broad based representation from both internal members and external members. Internal members of Council are usually elected representatives of stakeholders within the University.

### MEMBERS OF THE GOVERNING COUNCIL

- |     |                                      |   |   |
|-----|--------------------------------------|---|---|
| 1.  | Alhaji Umaru Aliyu                   | - | Pro-Chancellor  |
| 2.  | Dr. Alkasum Abba                     | - | Vice-Chancellor   |
| 3.  | Mr. Pheneas P. Elisha                | - | Member  |
| 4.  | Mrs. Saratu L. Jande                 | - | Member  |
| 5.  | Alhaji Sali Bello                    | - | Member  |
| 6.  | Bishop (Dr.) Jinga L. Mayo           | - | Member  |
| 7.  | Mr. Yakubu A. Tiki                   | - | Rep. Ministry of Higher Education<br>Science and<br>Technology, Yola. |
| 8.  | Barrister Bashiru Hamidu             | - | Representative, Ministry of Justice                                   |
| 9.  | Prof. (Mrs.) Mercy Ogunsola- Bandele | - | Representative, University Senate                                     |
| 10. | Dr. Saidu M. Moruppa                 | - | Representative, University Senate                                     |
| 11. | Mr. Kumthi E. Anjili                 | - | Representative, University Congregation                               |
| 12. | Mrs. J. M. Garnvwa                   | - | Registrar and Secretary to Council                                    |

The main functions of the University are TEACHING, RESEARCH and COMMUNITY SERVICES. However the core functions of the University are Teaching and Research.



## **ADMINISTRATIVE STRUCTURE**

The Administrative structure of the University places the Visitor at the Apex of the organogram with the Chancellor next in line of Authority. However, both the Visitor and the Chancellor hold essential ceremonial roles.

The Governance of the University is undertaken through the Governing Council. The Council undertakes its responsibilities through general scheduled meetings and through its various committees, some of which are jointly constituted with the University Senate and Management.

All academic matters in the University are within the purview of the University Senate. The Vice-Chancellor is both the Chairman of the Senate and the Chief Executive officer of the University. He equally presides over a Management Committee that sees to the day-to-day running of the affairs of the University.

The Vice-Chancellor is assisted by a Deputy Vice-Chancellor. Other Principal Officers of the University include the Registrar who is the Chief Administrative officer of the University. The University Librarian is the most senior academic staff responsible for the Administration of the University Library and the Bursar who is the Chief Finance Officer of the University.

The following Senior Officers of the University take responsibility for the direction and productivity of the sections or Units under their control.

1. Deans of Faculties
2. Heads of Academic Departments
3. Directors of academic and non-academic departments, centres and Units

These officers assist the Vice-Chancellor in implementing policies and programmes of the University with respect to their units.



## VISITOR AND PRINCIPAL OFFICERS

1. Visitor - His Excellency, Dr. Murtala H. Nyako, Executive Governor Adamawa State
2. Chancellor - HRH Murum Joram Joel Fwa, OON
3. Pro-Chancellor - Alhaji Umaru Aliyu
4. Vice-Chancellor - Dr. Alkasum Abba
5. Registrar - Mrs. J. M. Garnvwa
6. Bursar - Mallam Muhammad B. Abubakar
7. University Librarian - Mallam Bello Yahya Dahiru

## MISSION, OBJECTIVE AND RELEVANCE

### VISION

Adamawa State University is established as a tower for intellectual development, to train men and women on the acquisition of appropriate skills, abilities and competence in cognitive, affective and psycho-motor domains in order to equip them to contribute meaningfully to the development of their immediate communities in particular, Nigeria and World at large. The programmes of the University are designed to inculcate the proper values and attitudes for ensuring the socio-economic development of the country.

### MISSION

The mission statement of Adamawa State University is to produce graduates of the highest moral and academic excellence. The University shall pursue policies that will enhance highest standards in humanities, sciences, engineering, agriculture and other fields of human endeavour. Its graduates shall be trained and oriented to utilize modern technological and management tools for societal development. In particular, academic activities and research activities shall be geared towards poverty reduction, food security, employment opportunities, employment generation and raw materials production for industries.



## **ADAMAWA STATE UNIVERSITY, MUBI**

Adamawa State University, Mubi was established in January 2002 by the Adamawa State University law No. 10 of 2001. The University is located in Mubi town, in the Northern Senatorial District of Adamawa State, Nigeria. Mubi is geographically located within latitude 10.27 and longitude 13.28 and has an elevation of 1906 feet above sea level situated at the foot of the Mandara Mountains separating Nigeria from the Republic of Cameroun. It is characterised by a pleasant weather and beautiful scenic horizons. The town is the sect of the Emirate of Mubi with a First Class Emir.

Adamawa State University, Mubi is the first State Government owned University in the North East sub-region of Nigeria. Since establishment, the University has graduated a total of four sets of students, 67 in 2005/2006 session, 200 in 2006/2007 session, 309 in 2007/2008 session and 353 in 2008/2009 session totalling 929 graduates.

At present, the University has a total of 4, 600 undergraduate students and 384 pursuing Postgraduate Diplomas and higher degrees.

The total number of academic staff of the University is 229 supported by 52 visiting and 7 part-time lecturers. These are complimented by 166 senior non-academic staff and 281 junior staff of different cadres.

## **UNIQUE STRIDES**

Adamawa State University has recorded some unique strides since its establishment in the year 2002. The University has a very stable academic calendar which enables the University graduate its students regularly. This is the University's unique selling point.

All the 17 programmes run in the University have received full accreditation and approval from the NUC. In addition, the regulatory body had given the University the operational mandate to undertake higher degrees after a successful facility visit by an evaluation team from the NUC.



This is no mean feat for a young University of less than 10 years in existence.

The University has equally attracted recognition and support from diverse persons and bodies including the **National Communications Commission** which has provided several computers, books and V-SAT internet access facilities. The **NDIC** built an office block for the Fisheries Department and **Dell Computers** opened a service centre on the campus.

The Association of Black Mayors in the USA is also discussing with Adamawa State Government with regards to establishing a training institute for Local Government staff, which will be based at the University.

### **FOCUS ON ICT**

In keeping with the Management's Commitment to build a world class University in Mubi, great emphasis has been placed on Information and Communication Technology (ICT).

To this end, the University has put in place the following ICT facilities.

- A wireless internet access covering a 5 kilometre radius which encompasses the entire campus and Mubi Town.
- Internet compliant Computer Laboratories for the Department of Mathematical Sciences, a Geographic Information System GIS laboratory for the Department of Geography, an Econometric Laboratory for the Department of Economics, and an Accounting Laboratory for the Department of Accountancy.
- An Internet café with over 120 access points made up of 100 desktops and 20 laptops has been established.
- A Management Information System, MIS unit fully linked up with the Internet with functional Data Management servers has been set up in the University.
- The University has established an Electronic Data Management System EDMS back borne with capacity to manage all University Data and transmit same via Internet.
- ADSU Mubi has installed electronic Star Boards in lecture Halls and classrooms to





enable lecturers use electronic means to transmit lectures to students. It can also support network video conference lecture.

- The University has established an Electronic Library with annual subscription of Science Direct Data base that enables the University access over 5000 current books and 2000 scientific journals world wide.
- The establishment of staff and students laptops project which ensures that every student who enrolls acquires a laptop on loan at an affordable rate with a flexible repayment terms, while over 90% of the staff have been assisted to acquire laptops.
- The University is in the process of establishing a virtual learning space covering the entire campus as part of the over all ICT policy. The project will entail wireless transmission of lectures, notes and data including voice over IP for up to 10, 000 computers.

In order to complete the ICT process of the University, an ICT centre with Electronic classrooms is being built for the University. When completed, it will serve as the ICT hub of the University. It will enable the University organize and receive lectures from anywhere in the world through video conferencing.

### **FACULTIES/DEPARTMENTS**

The University has three Faculties: Agriculture, Science and Social and Management Sciences, with 14 Departments and undertaking 17 different degree awarding programmes.

The Faculties and Departments:

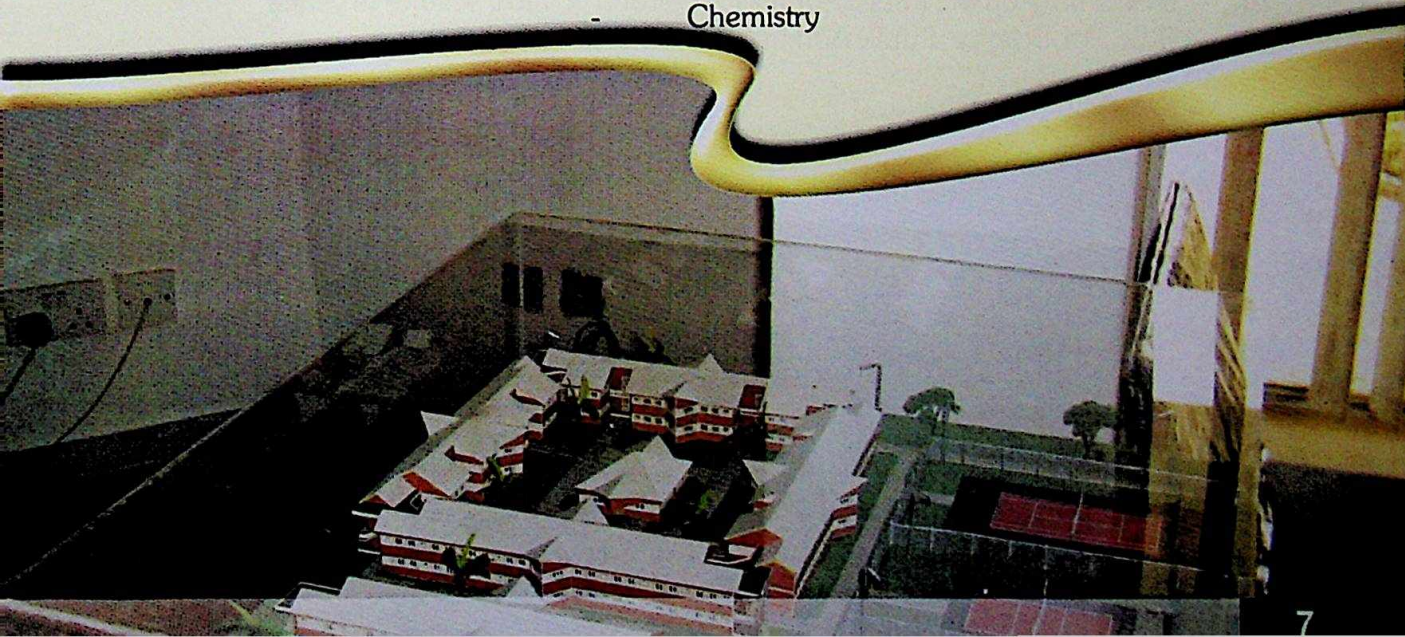
#### **FACULTY**

***Agriculture***

***Science***

#### **DEPARTMENT**

- Agricultural Economics & Extension
- Animal Production
- Crop Science
- Fisheries & Aquaculture
- Biological Sciences (Botany & Zoology)
- Chemistry



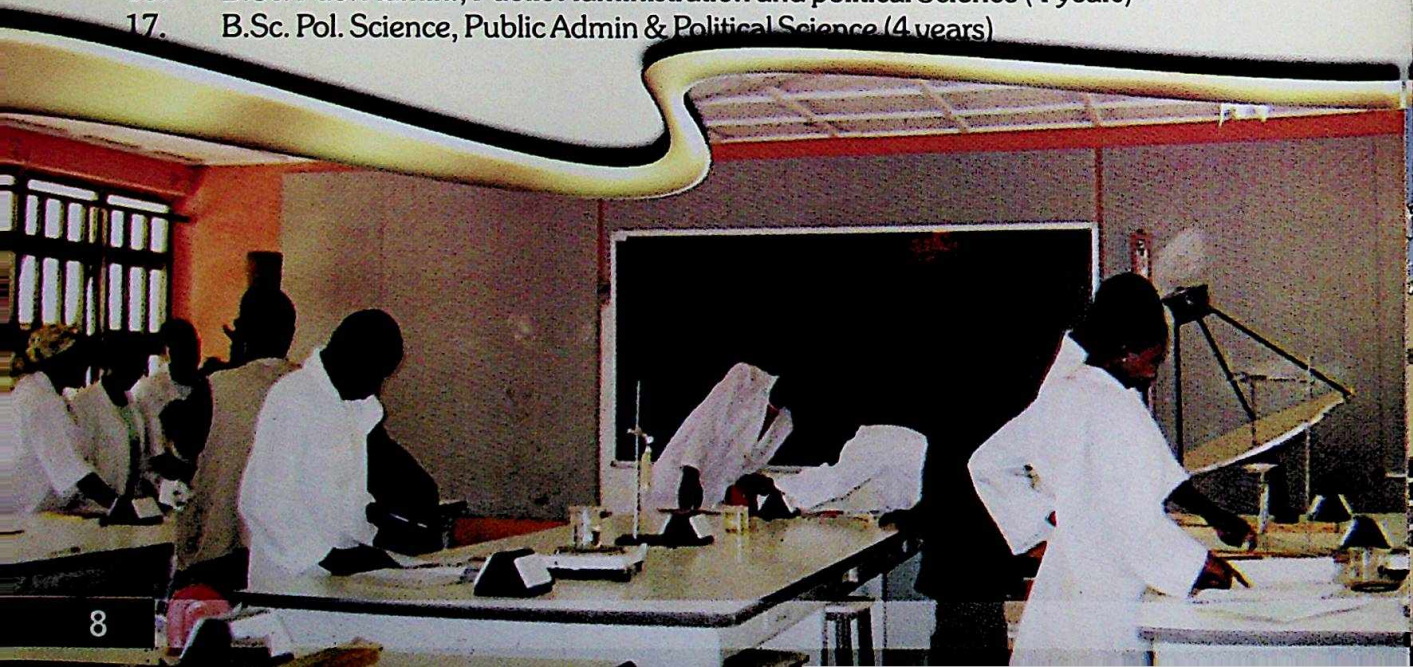
- Physics
- Geography
- Mathematical Sciences (Maths & Computer)
- Science Education

**Social and Management Sciences-**

- Accountancy
- Business Administration
- Economics
- Public Administration, (Public Admin & Pol. Science)

There are seventeen (17) programmes offered by the University in the 14 academic Departments.

1. B. Agric, Agricultural Economics & Extension (5 years)
2. B. Agric, Animal Production (5 years)
3. B. Agric, Crop Science (5 years)
4. B. Fisheries & Aquaculture, Fisheries & Aquaculture (5 years)
5. B.Sc. Botany, Botany, Biological Sciences (4 years)
6. B.Sc. Zoology, Biological Sciences (4 years)
7. B.Sc. Chemistry, Chemistry (4 years)
8. B.Sc. Physics, Physics (4 years)
9. B.Sc. Geography, Geography (4 years)
10. B.Sc. Mathematics, Mathematical Sciences (4 years)
11. B.Sc. Computer Science, Mathematical Science (4 years)
12. B.Sc. Ed., Science Education, Science Education (4 years)
13. B.Sc. Accountancy, Accountancy (4 years)
14. B.Sc. Bus. Admin., Business Administration (4 years)
15. B.Sc. Econs, Economics (4 years)
16. B.Sc. Pub. Admin., Public Administration and political Science (4 years)
17. B.Sc. Pol. Science, Public Admin & Political Science (4 years)



The University has completed all documentation for the establishment of a Faculty of Arts, Faculty of Law and a College of Medical Sciences.

### **THE POST-GRADUATE SCHOOL**

The Post-graduate School has just secured approval from the National Universities Commission to undertake Postgraduate Studies at PGD, PGDE, MBA, MPA, M.SC, and Ph.D in different disciplines.

New Post-graduate programmes will be added as the facilities are expanded and the profile of the academic staff improves.

### **THE UNIVERSITY LIBRARY**

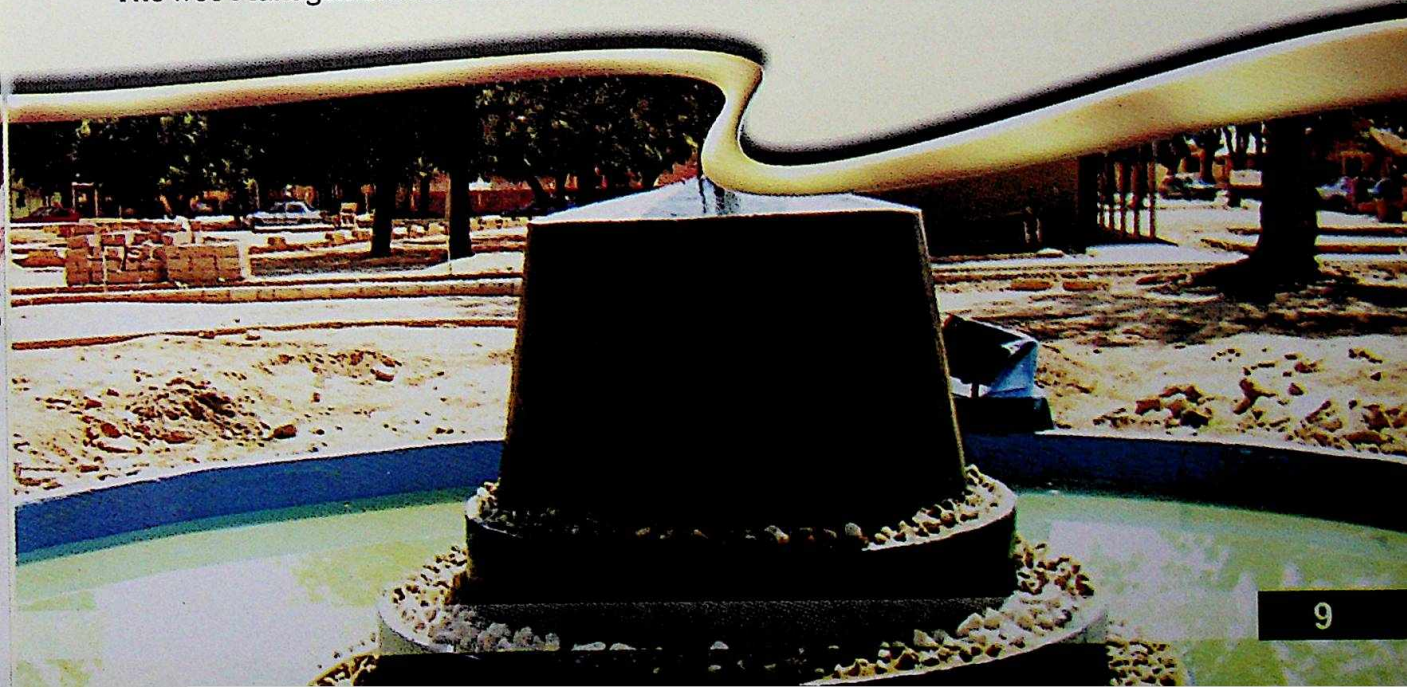
The University Library is the heart of academic activities in the University. It is named; Abdurrahman Ghaji Library in honour of the pioneer Vice-Chancellor of the University.

It is made up of the Central Library, a Postgraduate Library, Faculty of Agriculture Library, Faculty of Science Library, Faculty of Social and Management Sciences Library and an Electronic Library. The stock holding of the Library has been expanding daily with the electronic library having access to over 5, 000 on-line books and 2000 International journals. The Library has been linked to the University website and portal and operates online catalogue card access process through latest ICT databases. The University Library is also linked to the National virtual Library.

### **THE UNIVERSITY WEBSITE/PORTAL**

The University has an active website at <http://www.adsu.edu.ng> and a web portal for online registration and access to the electronic Library. The website also creates a window for placement of the admission list and checking of end of semester results.

The web Management team has endeavoured to place e-copies of the University Bulletin on the



site so that visitors to the site can download them and have access to latest information on the University.

### **REMEDIAL AND BASIC STUDIES**

There is a Basic Studies programme started in the 2009/2010 academic session. The Basic Studies programme is a two year advance level course leading to the acquisition of IJMB (ABU Zaria) qualifications which are accepted for Direct Entry admission to all Nigerian Universities.

The University has commenced a Remedial Science programme for Secondary School leavers who may not meet the requirements for Admission through the UME process.

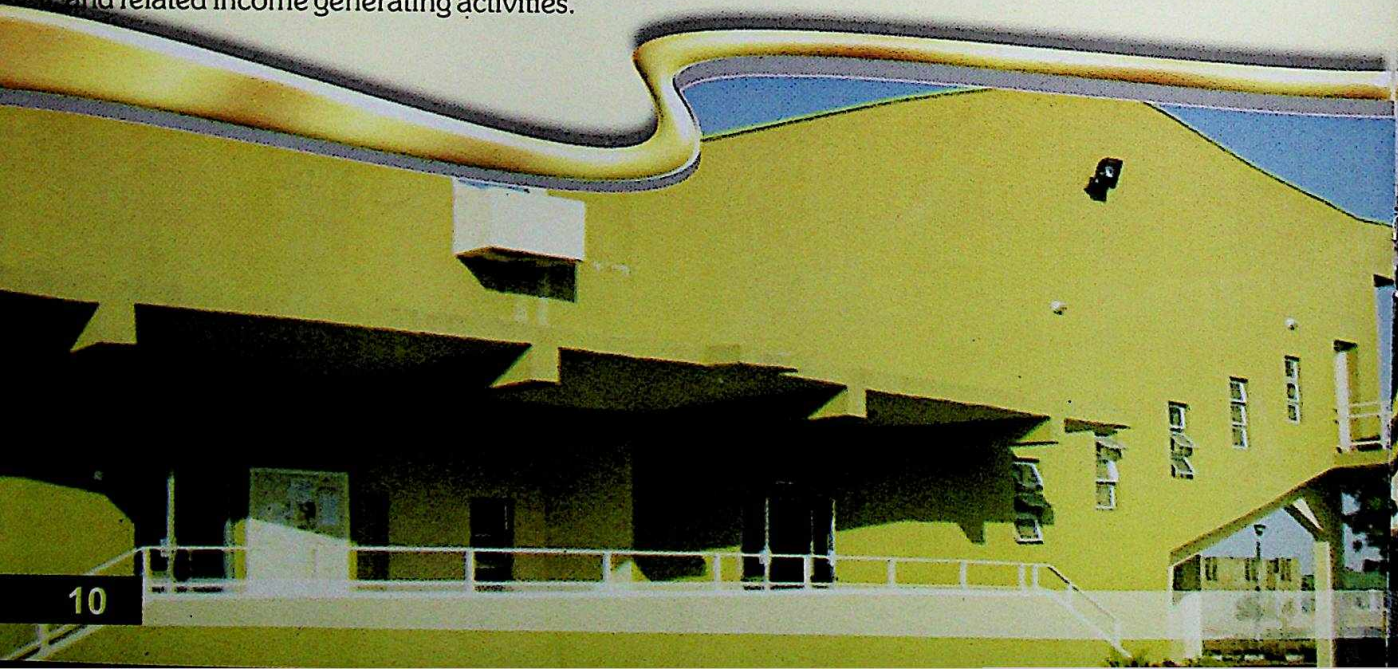
The Remedial Science programme is essentially designed for students with weak grades in the Sciences who may need some coaching to improve on their performance in O/level exams and JAMB UME.

### **UNIVERSITY PRIMARY/SECONDARY SCHOOLS**

The University Management in realization of the need to cater for children of staff and also as part of our community services has decided to establish Primary and Secondary schools. The schools will in addition to admitting children of staff, also provide room for children within the Mubi community. The schools will provide effective background to the pupils/students especially in the Sciences.

### **OTHER SUPPORT SERVICE**

A Directorate of Academic Planning has been established in the Vice-Chancellor's office, responsible for the coordination of all academic activities including the preparation of a strategic plan for the University and the translation of the academic brief in respect of all programmes. A Directorate of Physical Planning and Development oversees the actualization of the Physical Master plan of the University. The University Medical Centre caters for the basic health problems of staff and students. The University Consultancy services is a limited liability services and related income generating activities.



## STUDENTS LIFE

A Directorate of Students Affairs takes care of student's welfare. The Directorate manages five hostels for female students and two for male students. Plans are at an advanced stage to build a State of Art standard modern female hostel through a BOT arrangement, by a private company, Jibiro properties.

A vibrant Students Union Government exist in the University. The Union operates as a link between the students and the University Management.

It also serves as the voice of ADSU students in National and even international fora where students are gathered.

The annual election process for deciding the leadership of the Union is one of the most exciting period in the life of students on campus. It is an annual event filled with democracy ethos. There are other students groupings based on course areas or proposed professional callings.

The Sports Unit provides avenues and facilities for both indoor and outdoor games and recreational activities. The University is a full member of the National Universities Games NUGA, and West African Universities Games, WAUG.

## LINKAGES/AFFILIATIONS

The University has endeavoured to provide avenues for linkages and affiliations with Universities and agencies across the world. The University has linkages with the Universities in India, Thailand, Malaysia, Ghana and others across Nigeria.

The goal of the linkage project is:

- to create avenue for exchange of senior academic staff
- admission of ADSU staff for PG programmes
- joint research project



- students exchange
- collaborative seminars, conferences, and publication of intellectual papers
- exchange of Library materials and Scientific equipment

The University is a full member of:

- Conference of Vice-Chancellors of Nigerian State Universities
- Conference of Vice-Chancellors of Nigerian Universities
- Association of African Universities
- Association of Commonwealth Universities
- International Association of Universities

#### CONTACT

Office of the Vice-Chancellor

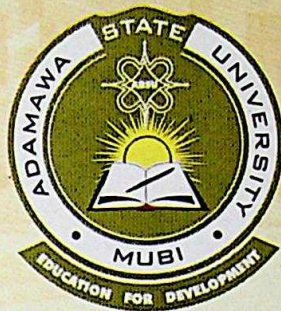
Adamawa State University,

P.M.B. 25, Mubi Nigeria

Website: [www.adsu.edu.ng](http://www.adsu.edu.ng) E-mail: [info@adsu.edu.ng](mailto:info@adsu.edu.ng)

Tel. +234 8058421126, +234 8036131590





## PREFACE TO THE LOGO

**GREEN:** The Murky Green colour symbolizes the rich vegetative/agriculture product potentials of the state.

**THE SUN:** The sun signifies the dawn of modern qualitative education of the highest standards, while the yellow colour represents the peaceful co-existence and cementing those goals.

**RED & BLACK:** These colours together represent dignity for labour through qualitative education and skills acquisition, which the University shall vigorously pursue.

**AREWA SYMBOL CREST:** This symbol connotes the desire to promote educational development in the Northern States as a pre-requisite for physical development and cohesion.