

THE PRESIDENCY



NATIONAL SPORTS COMMISSION,
FEDERAL SECRETARIAT PHASE ONE, SHEHU SHAGARI WAY,
MAITAMA, ABUJA

(POWERPOINT PRESENTATION)



INTRODUCTION

Welcome To This Presentation

By

**The Honourable Minister of Sports/
Chairman, National Sports Commission.**

Engr. Sani M. Ndanusa FNSE.



This presentation is about the new
initiative of
The National Sports Commission
at
Development of Sports Facilities
at the Grassroots throughout all the
States of the Federal Republic of
Nigeria.



The Presentation will be in two (2) Parts:

1. Political, Philosophy, Economic and Administrative aspects of the Project.
2. Technical/ Engineering Aspect.



Political, Philosophy, Economic and Administrative aspects of the Project.

The project is titled:

“Development of Community Sports Centres in all Senatorial Districts of all the States in the first phase and ultimately in all Local Government Areas of all the States in the Federation”.



IMPLEMENTATION

The Implementation of the Project is Christened
“Public-Public-Partnership” (PPP).

This means partnership or collaboration between
Federal and State Governments on the one hand and
the States and Local Governments on the other
In the implementation of the project.



AIMS & OBJECTIVES OF THE PROJECT

- New Concept of Sports.
- Development of Standard Sports facilities.
- Discovery of young talented athletes at the grassroots.
- Economic engagement of the youth, employment and wealth generation at the grassroots.
- Mass access to sports facilities for training, competition, recreation, teaching, research etc at the grassroots.
- Investment in the development of the youth of Nigeria.



All over the world, Sports is now regarded as a tool of employment and wealth generation, International diplomacy, avenue to fame and world recognition, hence sports is no longer a mere entertainment activity.

To reap the benefits of sports therefore, we need to invest massively in development of sports facilities and the youth as examples in other parts of the world as shown e.g Europe and the Americas.

We cannot achieve any meaningful development of the youth nor produce world class sports men and women unless we invest in development of sports facilities at the grassroots to facilitate early discovery of young and talented athletes.



MODALITIES OF IMPLEMENTING THE 'PPP'

The Federal Government through the NSC will provide the following:

1. Prototype Architectural/ Engineering designs of the Community Development Centers.
2. Assist in training of technical manpower, e.g. coaches, managers. Officials, administrators, facilities managers at the National Institute for Sports. (NIS).
3. Provide sporting equipment e.g. Balls, nets, hockey sticks etc.
4. State or Local Government will provide Land for Construction of the Community Development Center.
5. States and Local Governments will jointly finance construction of the Community Sports Center.



PRESENT SITUATION AT THE STATE AND LOCAL GOVERNMENT

At present, there is no uniform standard in the construction of sports facilities at the States and Local Governments. The PPP (Public – Public Partnership) is aimed at coordination and harmonization of construction of standard sports facilities throughout Nigeria.



CHALLENGES OF THE PPP

Three Major Challenges have been identified. These are:

- Availability and Provision of land particularly at the densely populated States and States with difficult terrain.
- Funding – States and Local Government have different needs competing for funds hence, appeal is made to them to accord priority to the development of the Community Sports Centers.
- Political Willingness of the State Executive Governors. The most challenging is getting the support of the political will of the executive Governors. We have comfort in saying that “Where there is a will, there is always a way”.



COMMUNITY SPORTS CENTER'S MANAGEMENT COMMITTEE

Each Sports Centre shall have a Management Committee comprising:

- (i) **Chairman of the host city or town of the Sports Centre shall be the Chairman of the Management Committee.**
- (ii) **All LGA Chairmen in the Senatorial District
- Member**
- (iii) **Paramount Traditional Ruler of the host Community
- Member**
- (iv) **Divisional Police Officer of the host Community
- Member**
- (v) **Education Secretaries in the Senatorial District
- Member**
- (vi) **2No Representatives of the Business Community of the host city or town
- Member**
- (vii) **Sports Centre Manager - Member/Secretary**



RESPONSIBILITIES OF THE MANAGEMENT COMMITTEE

The Management Committee shall have the following responsibilities:

- Formulate guidelines for the day-to-day running/use of the Sports Centres.
- Raise funds for the Management and Maintenance of the Center.
- Provide adequate security for the Sports Centre.
- Assist in promoting sponsorship of competitions.
- Assist in harmonizing sports competition calendar of educational institutions in the Senatorial District.
- Organize revenue generating activities for the Centre.
- Pay salaries and wages of the Sports Centre Staff.



TARGET USERS OF THE SPORTS CENTER

Primary target users of the Sports Centre are:

- **All Schools in the Senatorial District.**
- **All Sports Clubs.**
- **All Military and Para Military Organizations.**
- **Athletes and Sports Technical Officials.**
- **All youths of the Senatorial District.**



QUALIFICATION FOR STAFF OF THE CENTER

The staff of the center shall have the following qualification and experience:

- Sports Centre Manager must have a minimum of National Diploma in Mechanical or Electrical Engineering and a minimum post qualification experience of five (5) years.
- Technicians of the Centre must have minimum of City & Guilds (C&G) in their relevant fields with minimum of five (5) years post qualification experience.
- Accounts Staff of the Centre must have a minimum of National Diploma in Accountancy with minimum of three (3) years post qualification experience.
- Security Staff shall be a retired Police or Army Officer of not less than the rank of a Sergeant.
- Cleaners/Grounds men should have a minimum of Primary School Leaving Certificate.



SPORTS THAT CAN BE HOSTED/PRACTICED AT THE SPORTS CENTERS:

The Sports Centres should have facilities to conveniently host the following sports:

Athletics (Track & Field)

Badminton

Basket Ball

Boxing

Chess

Football

Handball

Hockey

Judo

Karate

Table Tennis

Taekwondo

Tennis

Scrabble

Para Soccer

Weight Lifting

Wrestling

Volley Ball

Darts



END OF PART I



PART II

ARCHITECTURAL AND ENGINEERING DESIGNS PRESENTATION



PRESENTATION OF ARCHITECTURAL/ENGINEERING DESIGN OF THE COMMUNITY SPORT CENTER

The center is designed to provide the following sports facilities and infrastructure. It is designed in two (2) options:

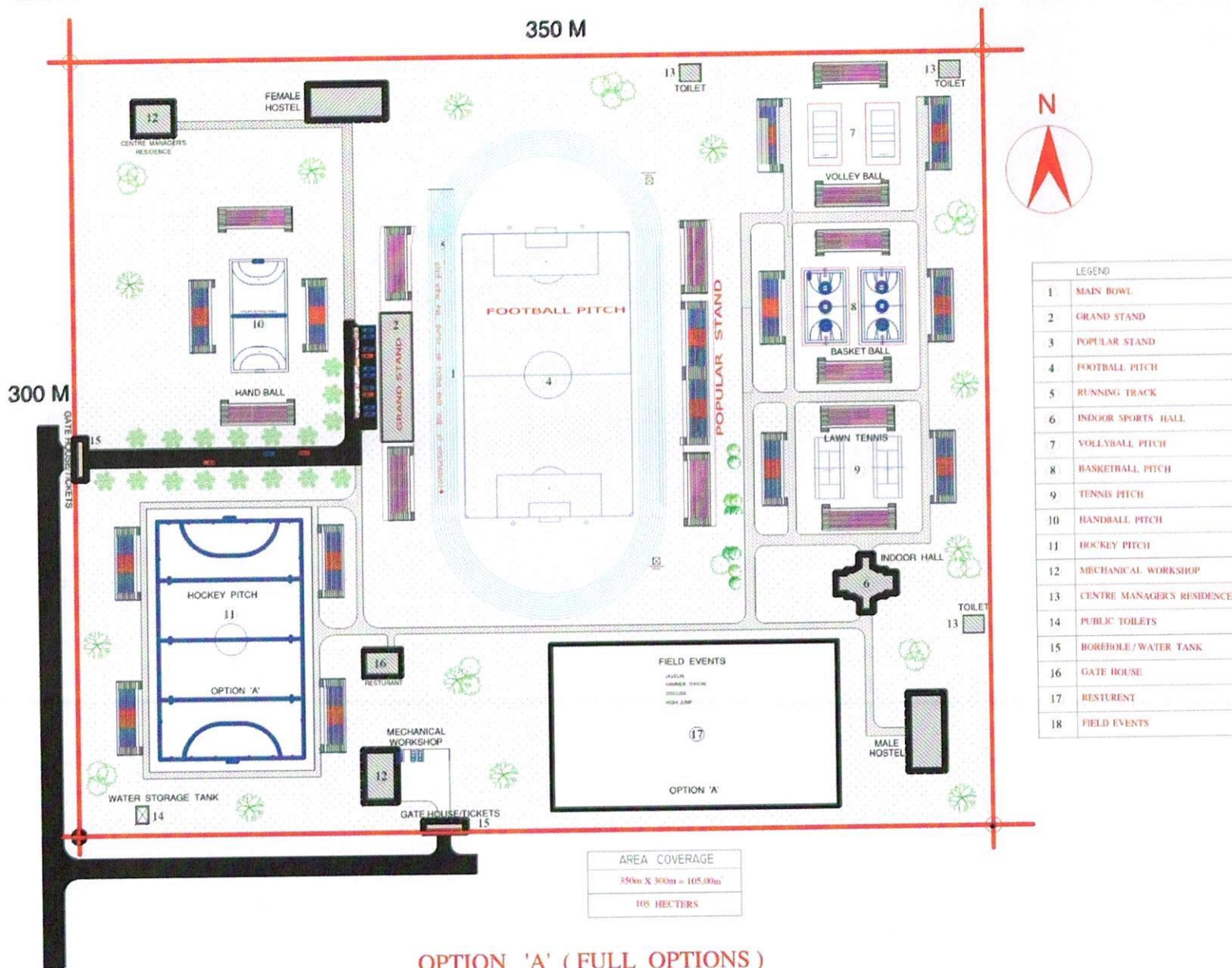
- 1. OPTION A-FULL OPTIONS**
- 2. OPTION B-LESS OPTIONS**



OPTION A



OPTION A -FULL OPTIONS



AERIAL VIEW OF THE SITE



OPTION A

Athletics (Track & Field)

Badminton

Basket Ball

Boxing

Chess

Football

Handball

Hockey

Judo

Karate

Table Tennis

Taekwando

Tennis

Scrabble

Special Sports

Weight Lifting

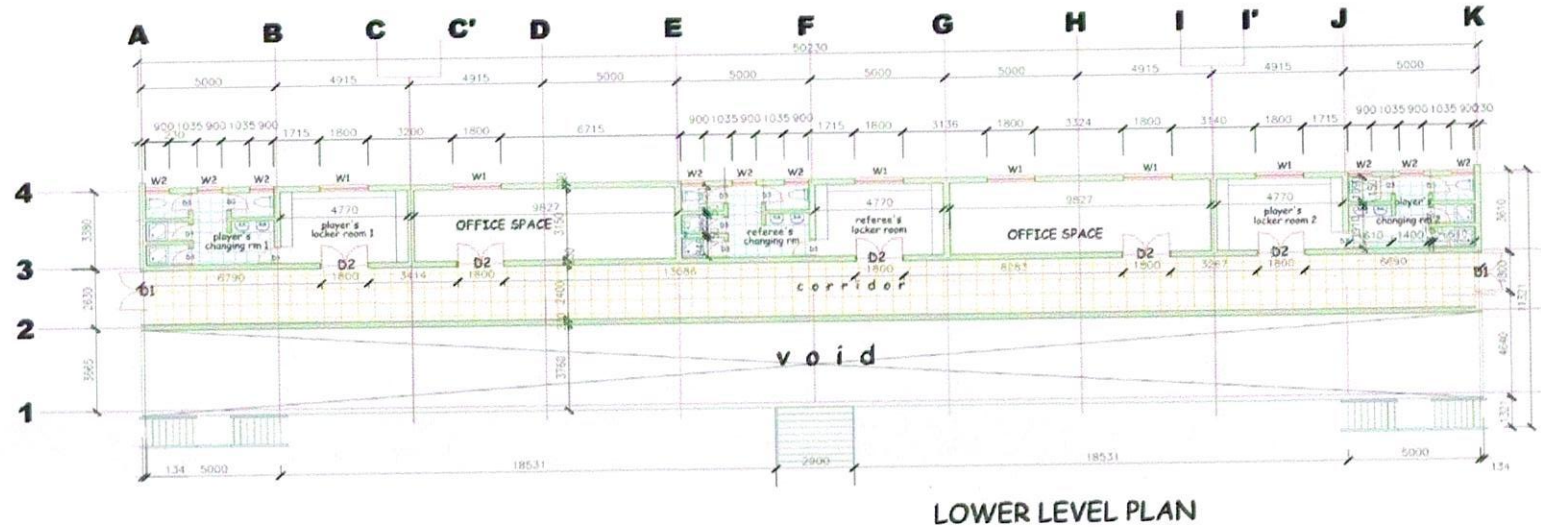
Wrestling

Volley Ball

Darts



GRAND STAND - LOWER LEVEL

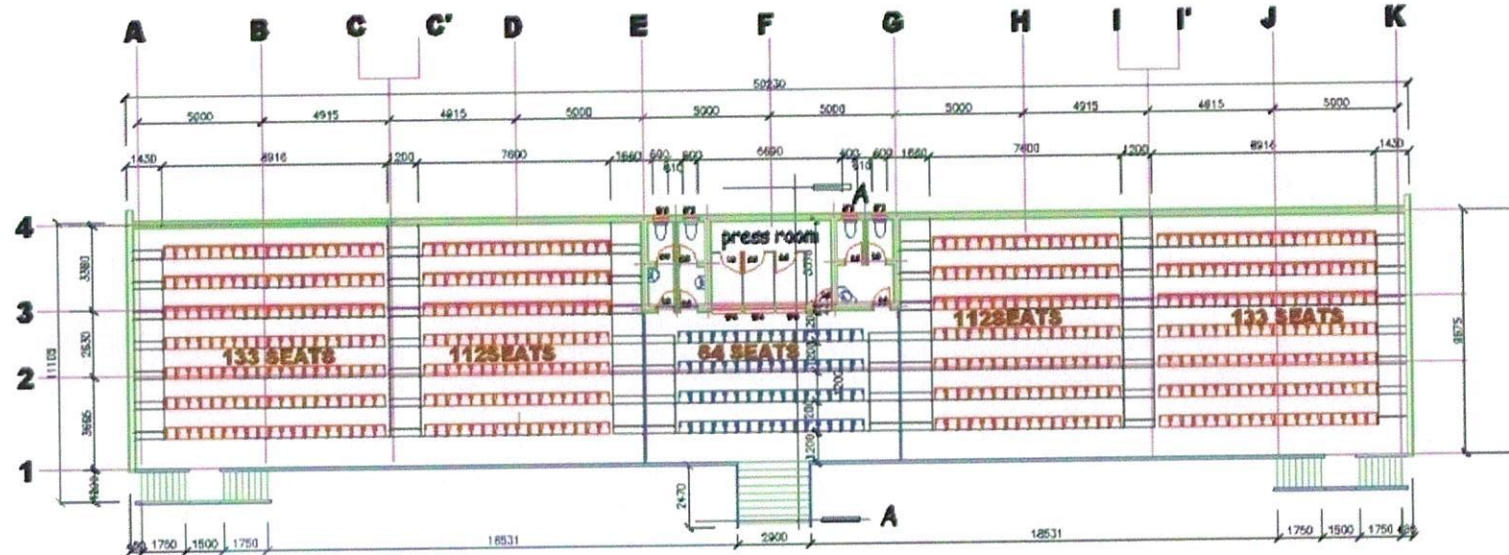


It is a level building taking advantage of the space beneath the galleries to accommodate on the ground floor or lower floor, 2Nos changing rooms, the V.I.P lounge, and a clinic.

On the upper level, the seats are provided in categories for the V.I.P's, the press and other dignitaries. Two toilets are provided for convenience. Press commentaries cubicles for radio are provided. It is designed to accommodate a total of 554 seats with 48 seats reserved for V.I.P. and 16 seats for V.V.I.P.



GRAND STAND - UPPER LEVEL



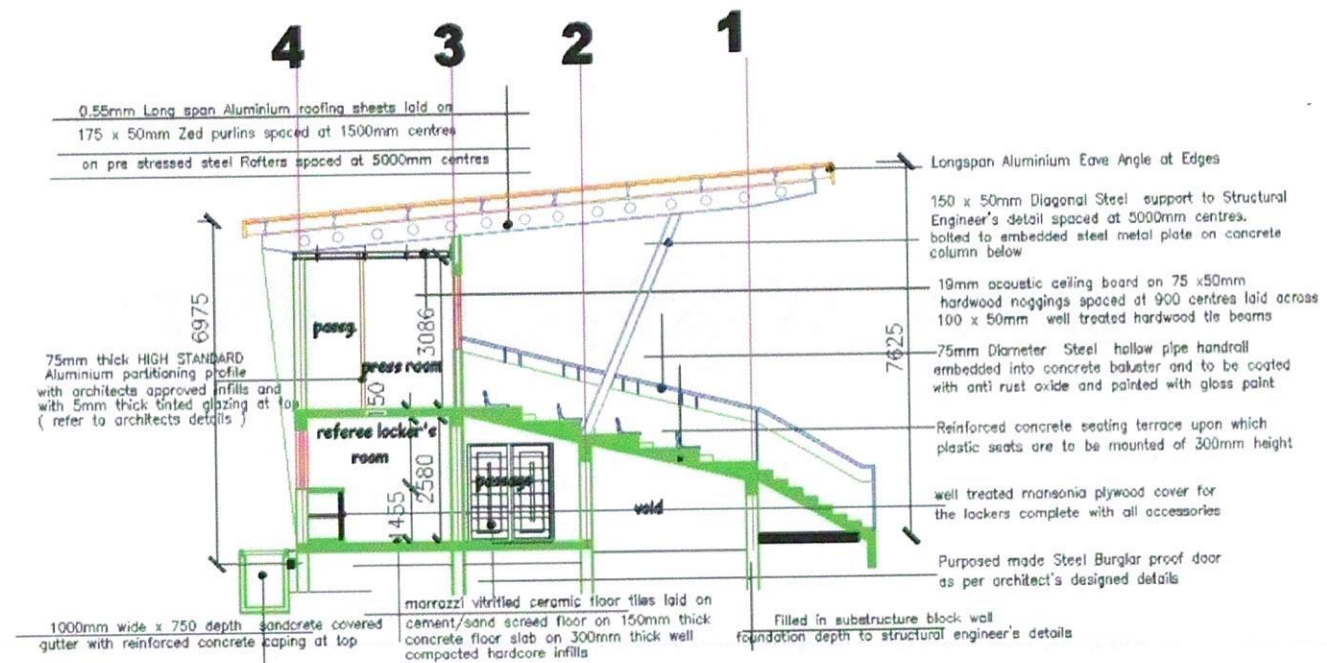
554 people seating capacity
490 red seats & 64 V.I.P. seats

UPPER LEVEL PLAN

The structure is open and simple to construct without requiring heavy machinery. Most of the roof structures can be pre-fabricated and transported to construction site. The roof is a steel framed structure covered by long span Aluminum Roofing Sheet



GRAND STAND - CROSS SECTION



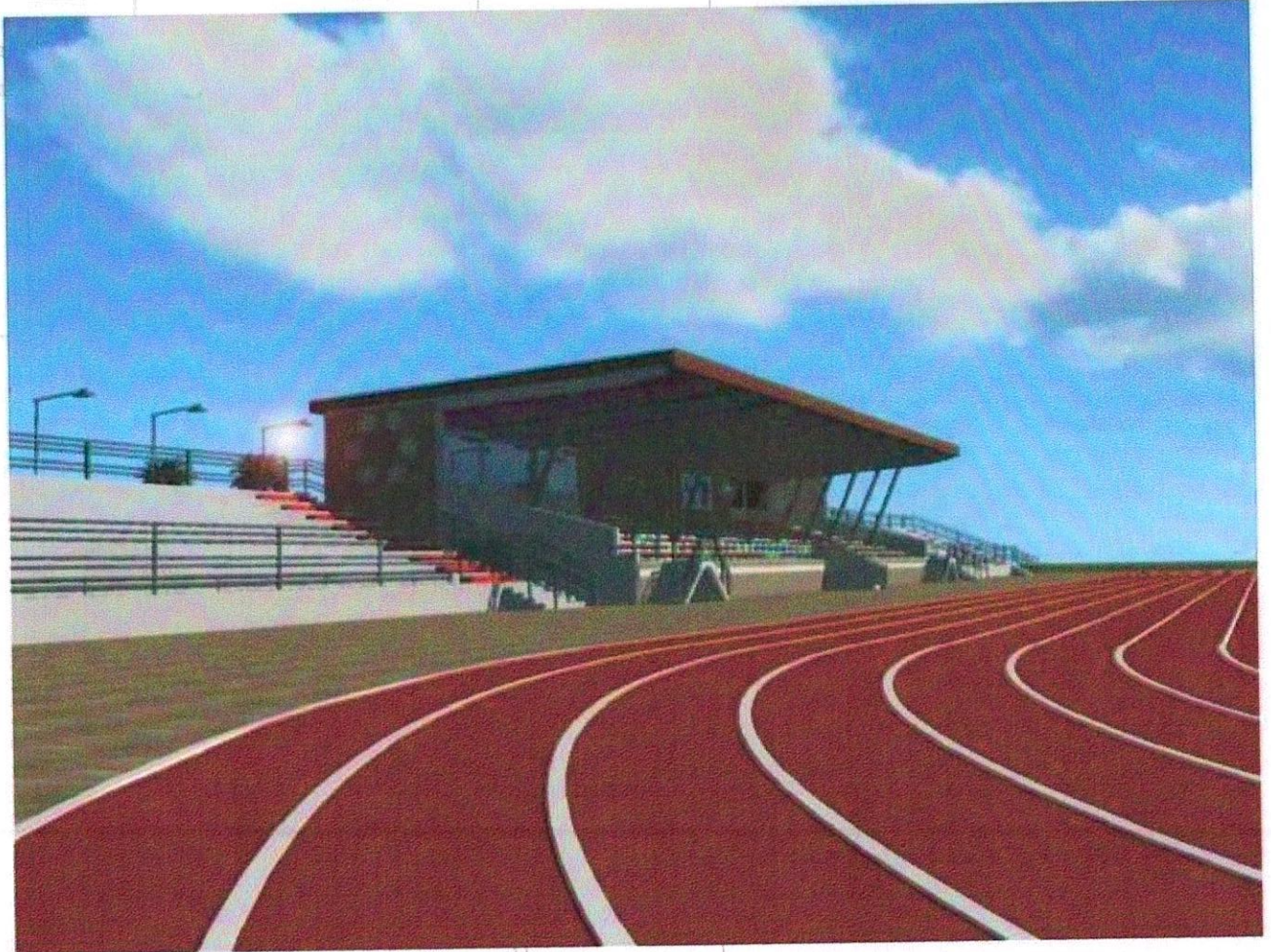
CROSS SECTION A- A



PERSPECTIVE VIEW OF THE GRAND STAND



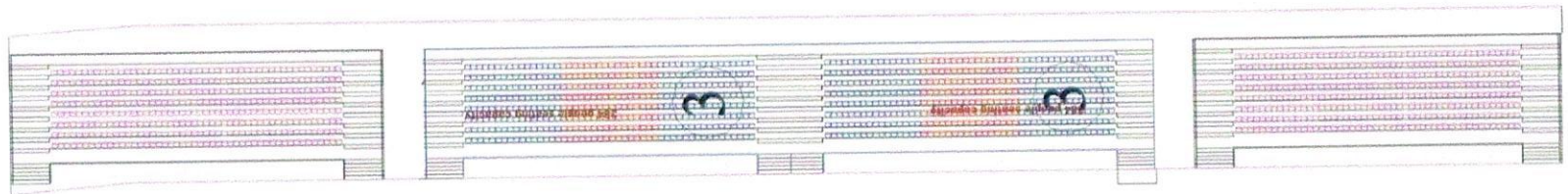
PERSPECTIVE VIEW OF THE GRAND STAND



PERSPECTIVE VIEW OF THE GRAND STAND



POPULAR STAND



POPULAR STAND

Easy to construct and open. It is best constructed precast with precast terraces laid on cast-insitu Raker beams. This arrangement is prototype and repeated in all the seating arrangements of the games areas. A unit seats 768 spectators.

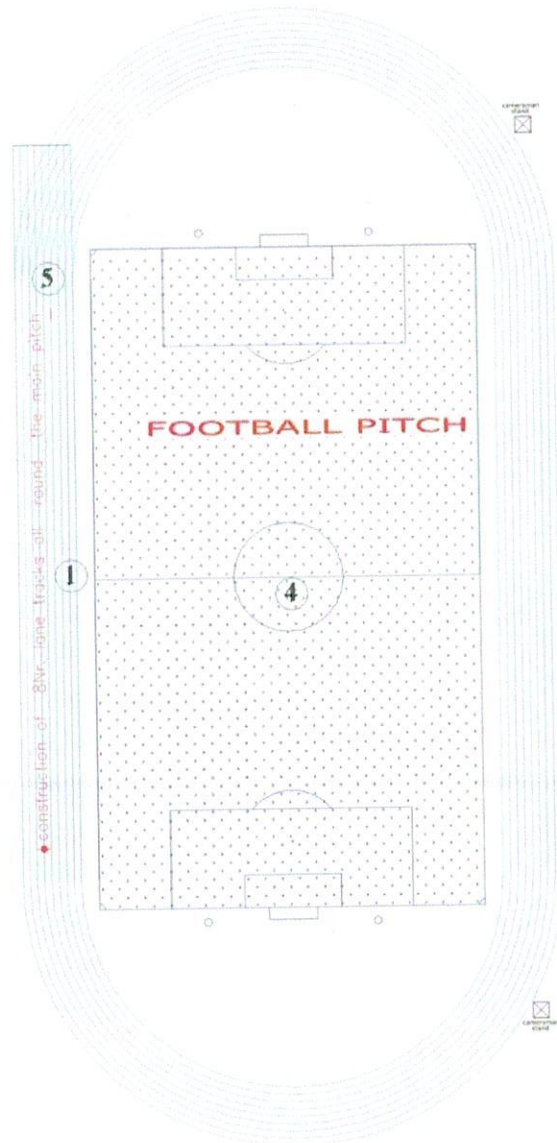


THE PITCH

It is a standard football pitch measuring 105m X 68m with 3.0m side lines on the four sides of the pitch. One of the most challenging areas in maintaining a stadium is maintaining a pitch to be lush green at all times,

The grass to be planted must adapt to the environment as climatic conditions differ from State to State in Nigeria. Therefore, for those States that can afford them, it is highly suggested that ARTIFICIAL TURF be used instead of Natural Grass Turf.

Ideally the running tracks should be Synthetic, Tartan or Mondo Tracks. However, due to the capital outlay and it may not be affordable to some States. The tracks designed are eight (8) lanes. Provisions for Pole Vault and Long Jump are



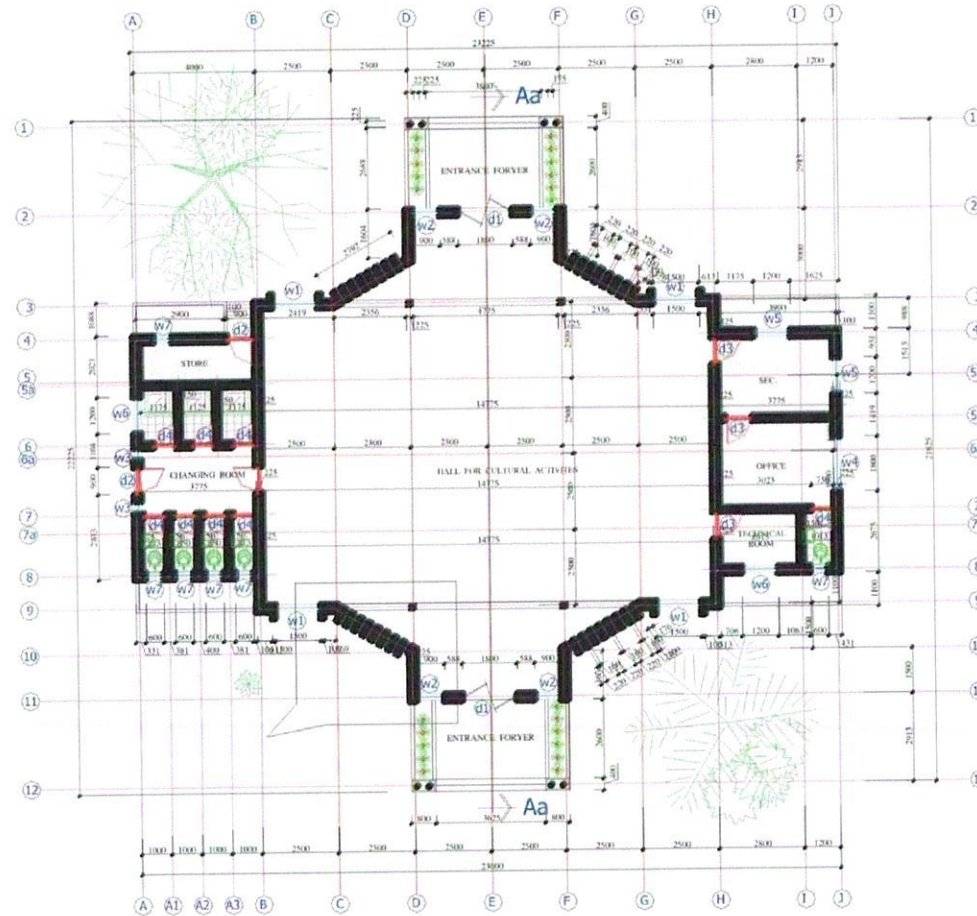
PERSPECTIVE VIEW OF THE MAIN PITCH



PERSPECTIVE VIEW OF THE RUNNING TRACKS



THE INDOOR SPORTS HALL



It is designed to house indoor games such as Table Tennis, Boxing, Weight Lifting, Dirt, etc. It is flexible in design and adaptation and provides general requirements in terms of lighting and ventilation.



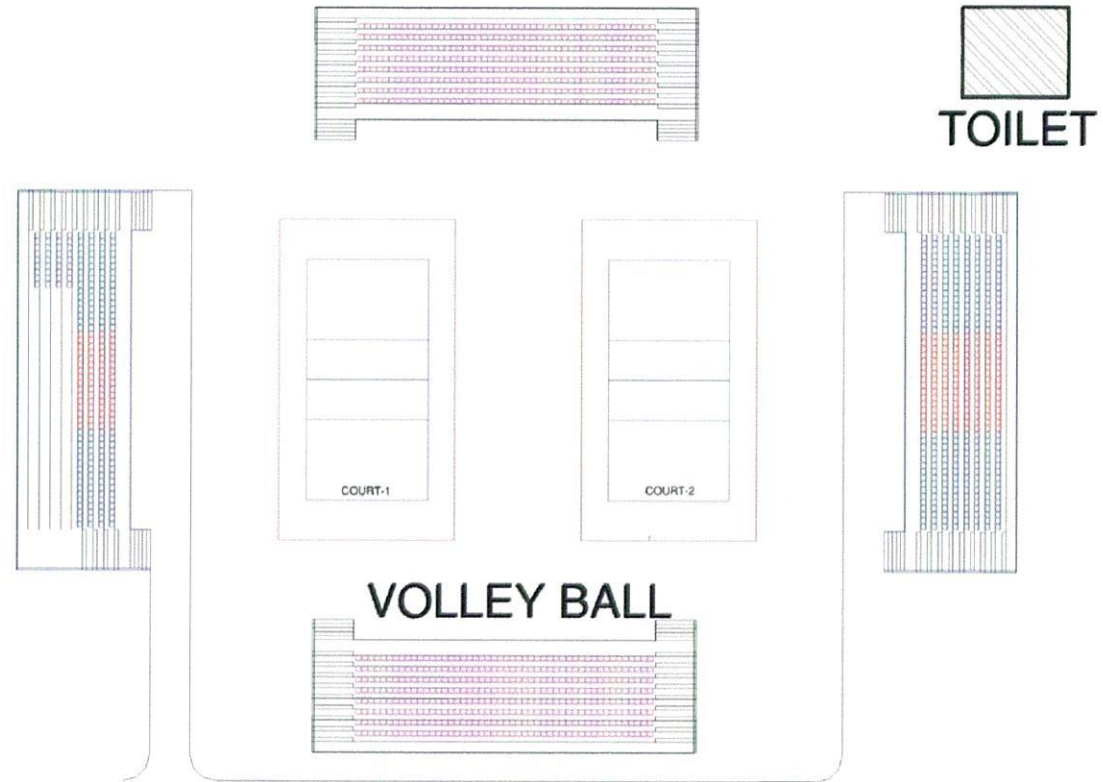
PERSPECTIVE VIEW OF THE INDOOR SPORTS HALL



PERSPECTIVE VIEW OF THE INDOOR SPORTS HALL



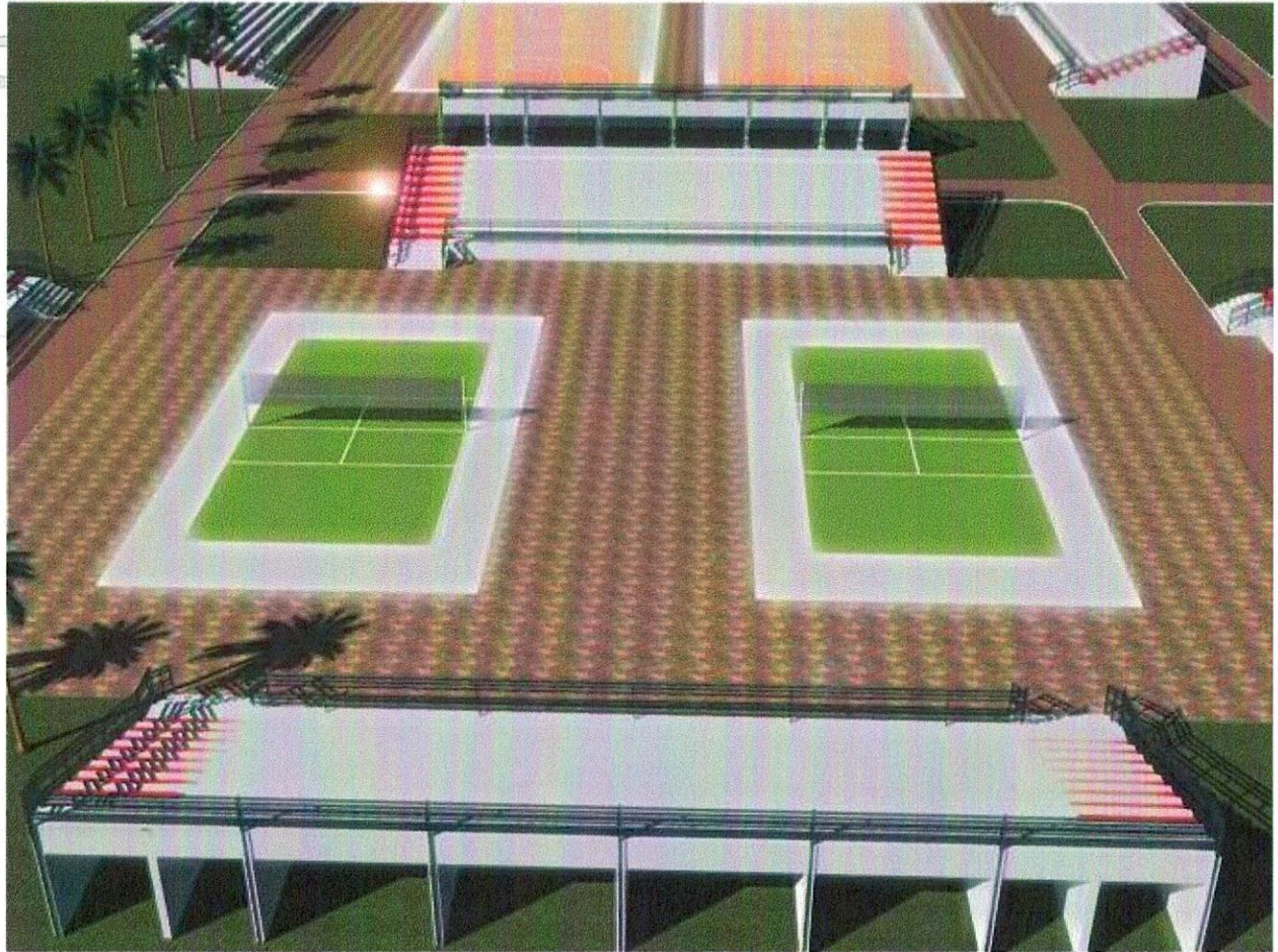
THE VOLLEYBALL PITCH



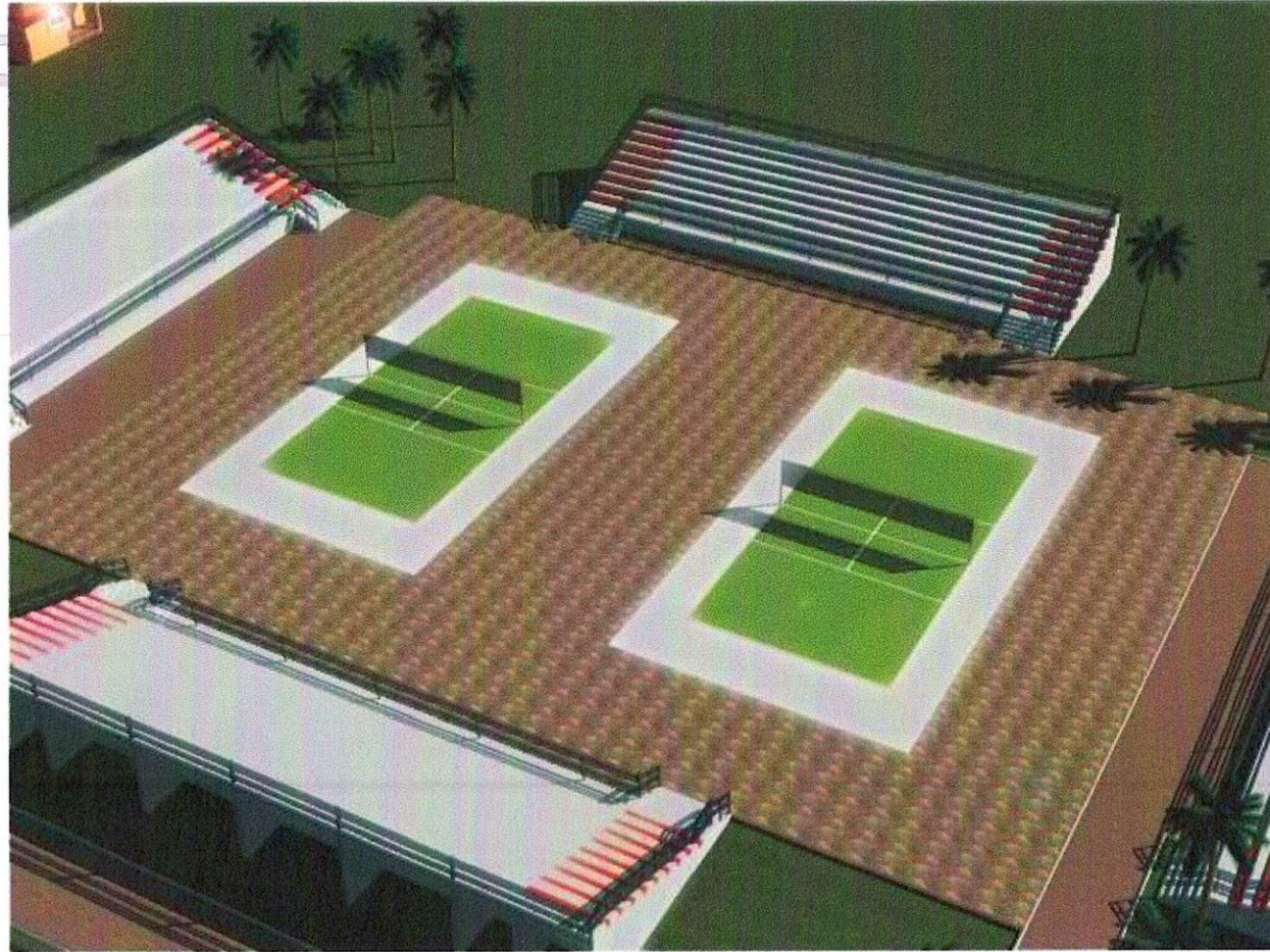
The pitch has two courts with Terraces on either side. Seating capacity is 1,536 but can be expanded to seat 3,072 spectators.



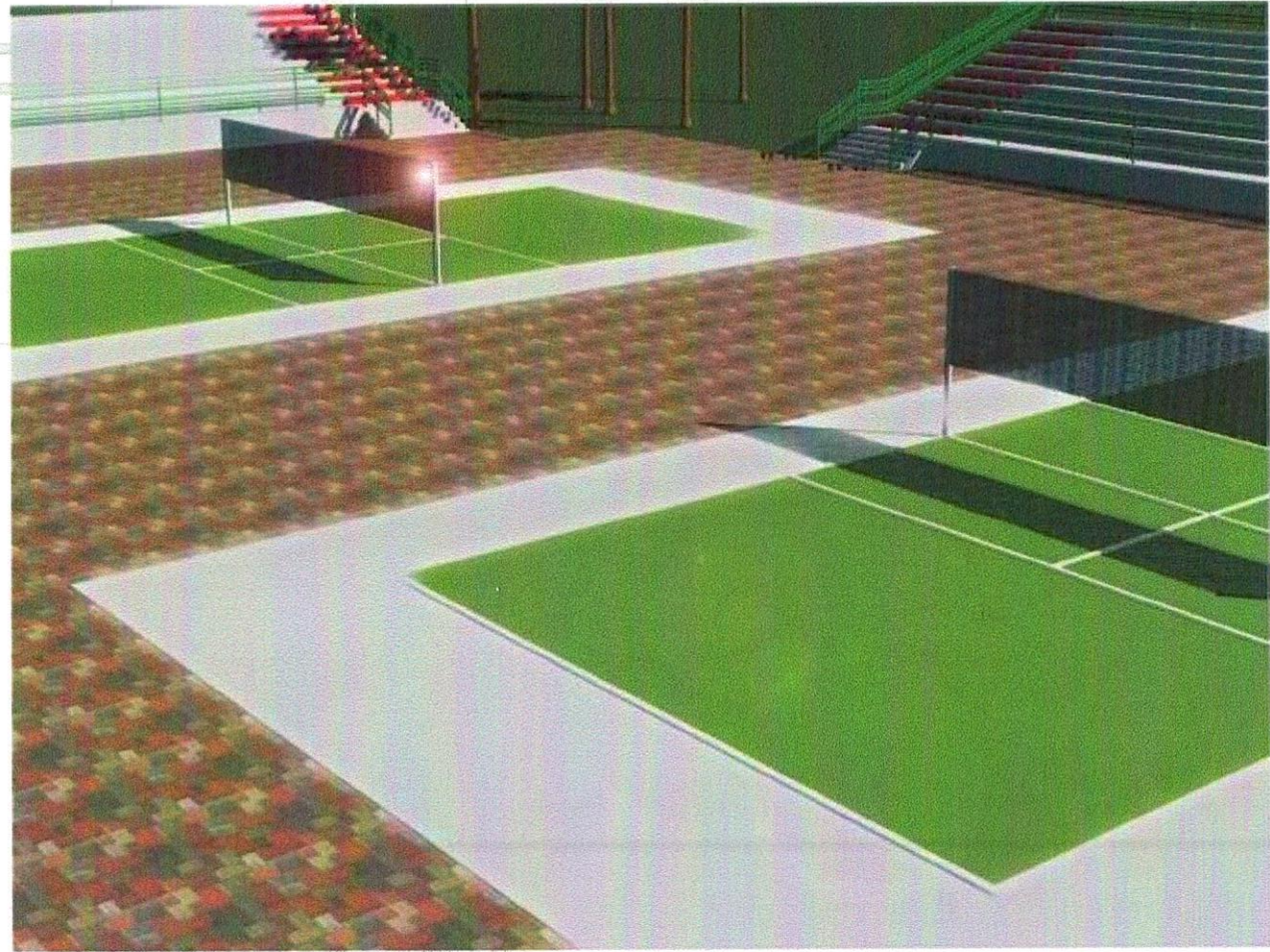
PERSPECTIVE VIEW OF THE VOLLEY BALL COURT



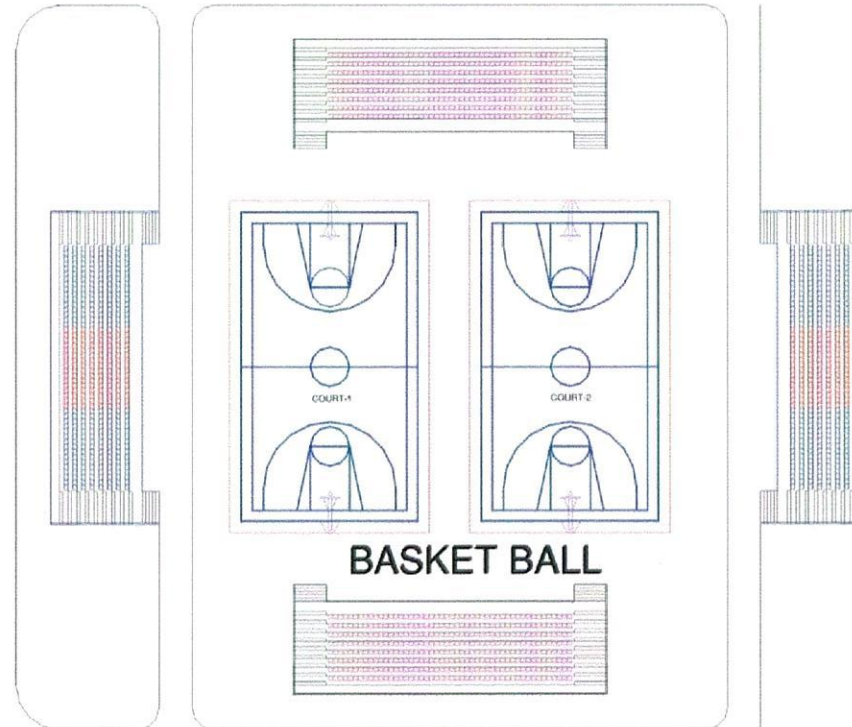
PERSPECTIVE VIEW OF THE VOLLEY BALL COURT



PERSPECTIVE VIEW OF THE VOLLEY BALL COURT



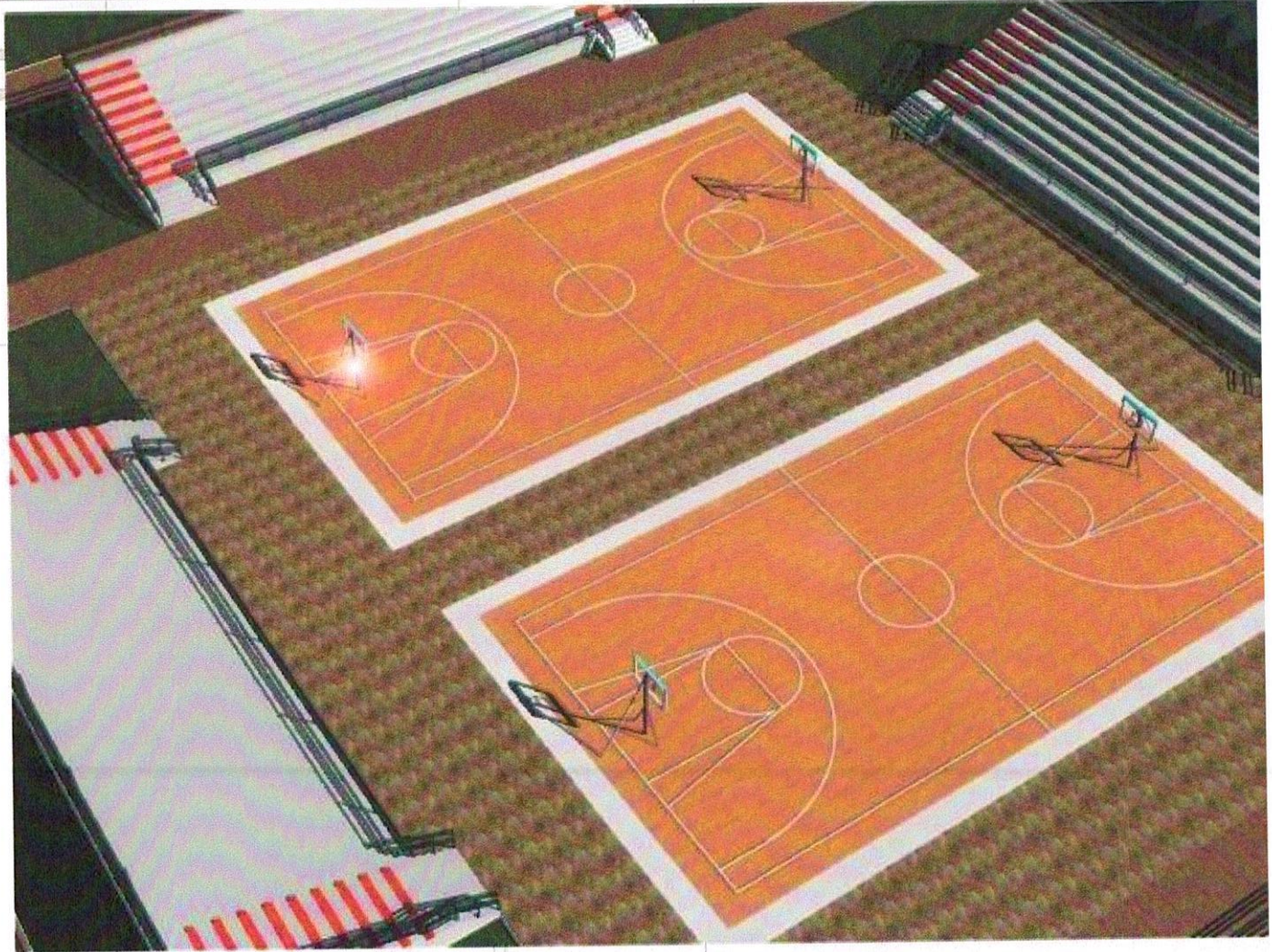
THE BASKETBALL PITCH



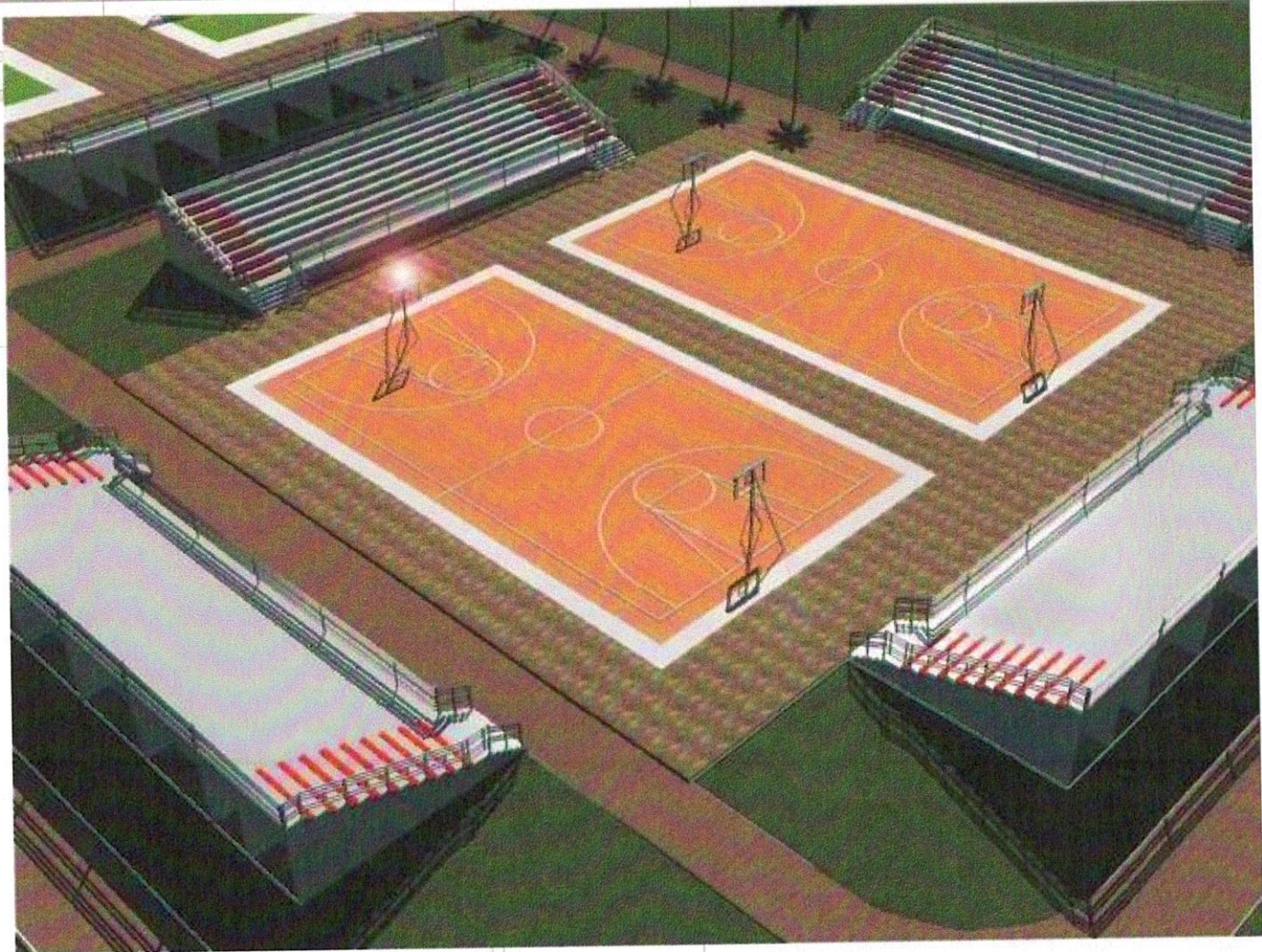
Two pitches have been provided with seating capacity for 1,536. Because of the flexibility of the design, the seating arrangement can be increased to 3,072 spectators.



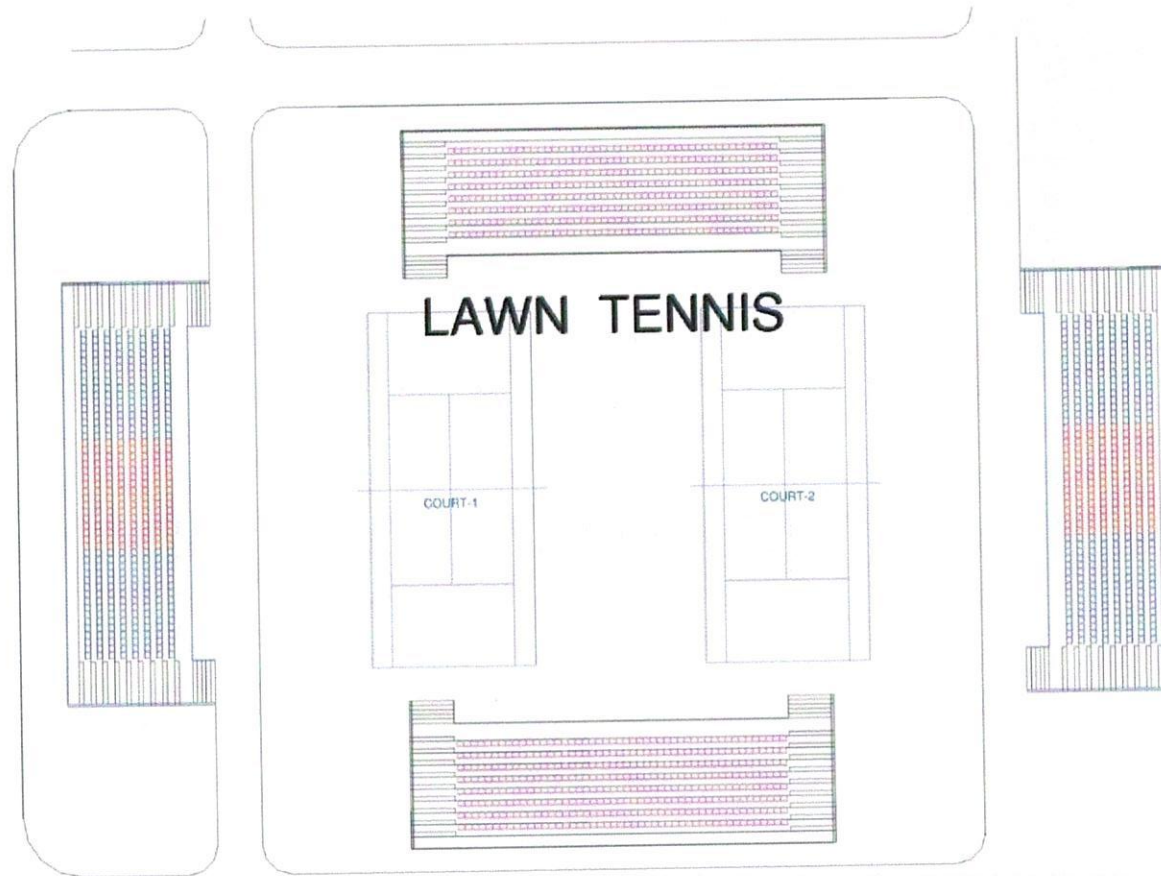
PERSPECTIVE VIEW OF THE BASKETBALL COURT



PERSPECTIVE VIEW OF THE BASKETBALL COURT



THE LAWN TENNIS COURT



Two (2) numbers have been provided with Terraces for Spectators. As in the case of Basket Ball and Volley Ball Courts, the seating capacity can be doubled with availability of funds.



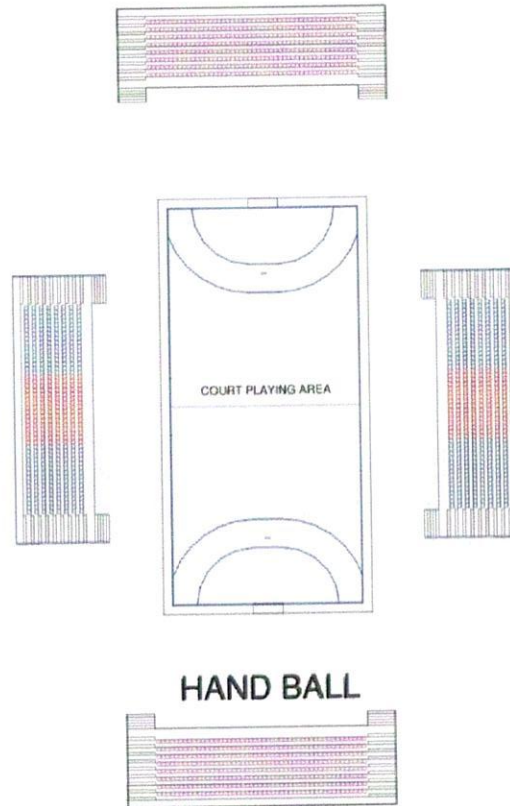
PERSPECTIVE VIEW OF THE LAWN TENNIS COURT



PERSPECTIVE VIEW OF THE LAWN TENNIS COURT



THE HANDBALL COURT



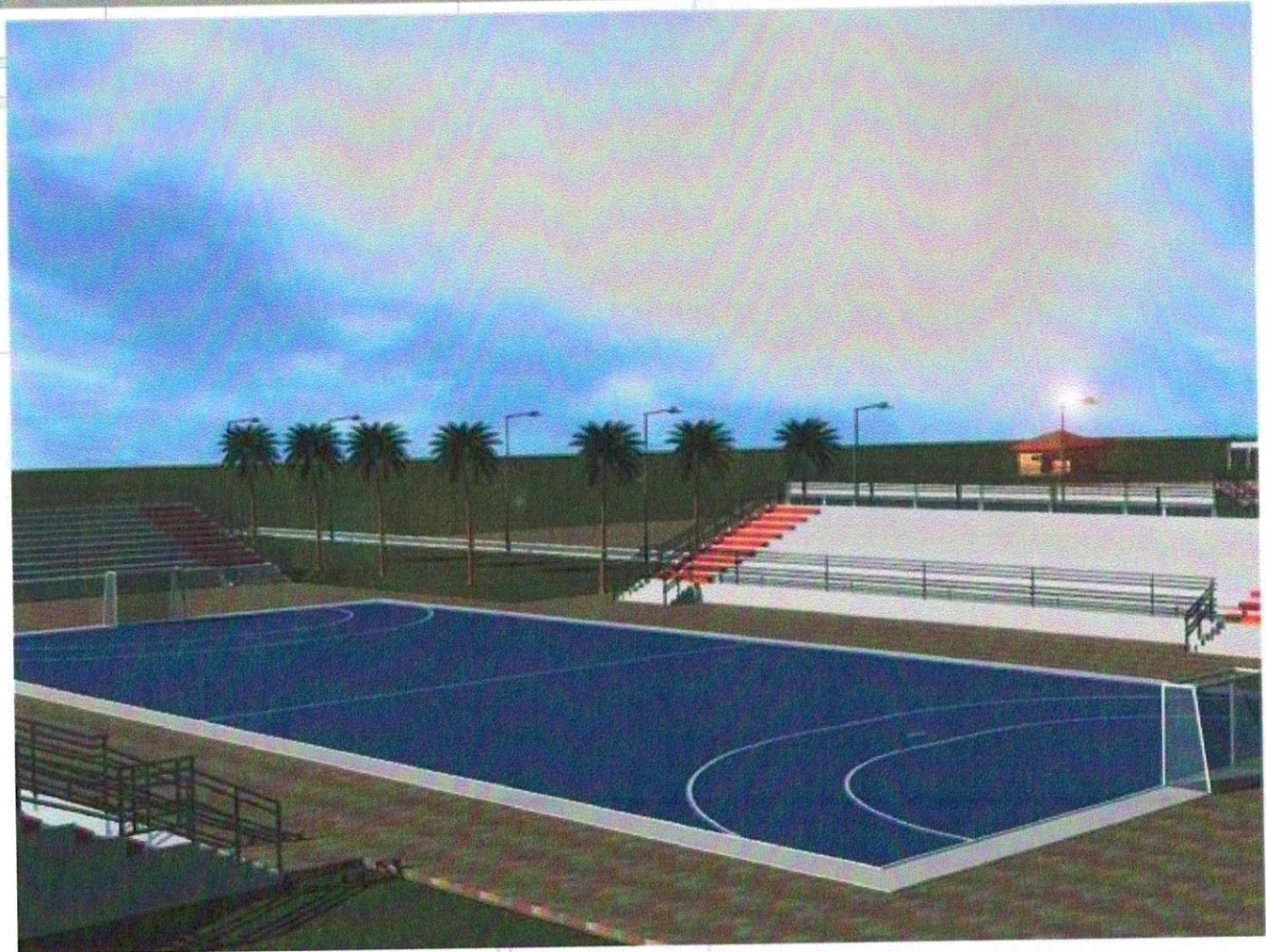
One pitch is provided with Terraces for seating. Seating capacity is 1,536 but can be expanded to seat 3,072 spectators.



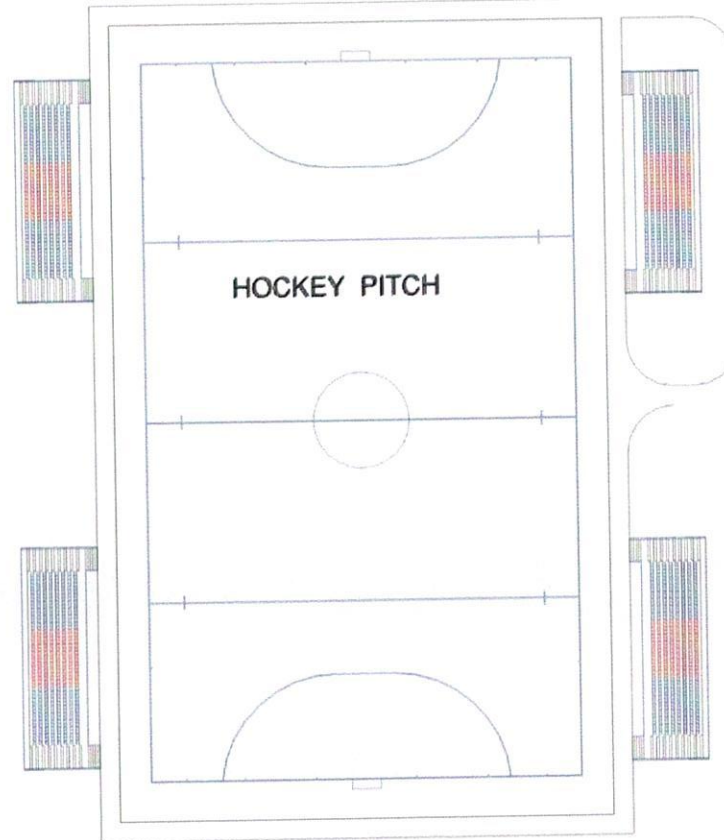
PERSPECTIVE VIEW OF THE HANDBALL COURT



PERSPECTIVE VIEW OF THE HANDBALL COURT



THE HOCKEY PITCH



One (1) number Hockey Pitch is provided with Terraces for seating. In areas that have comparative advantage in the sport of Hockey a separate Hockey Pitch can be constructed and finished with artificial playing surface for the same advantages listed for an artificial football pitch.



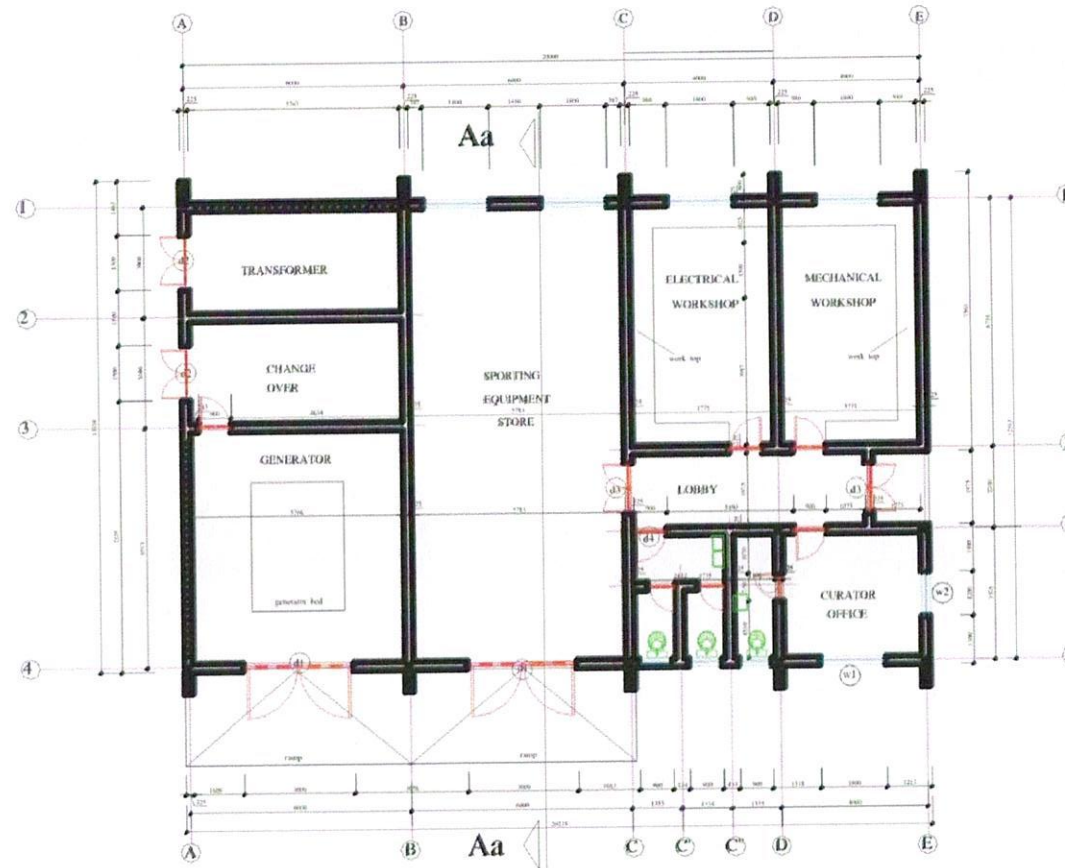
PERSPECTIVE VIEW OF THE HOCKEY PITCH



PERSPECTIVE VIEW OF THE HOCKEY PITCH



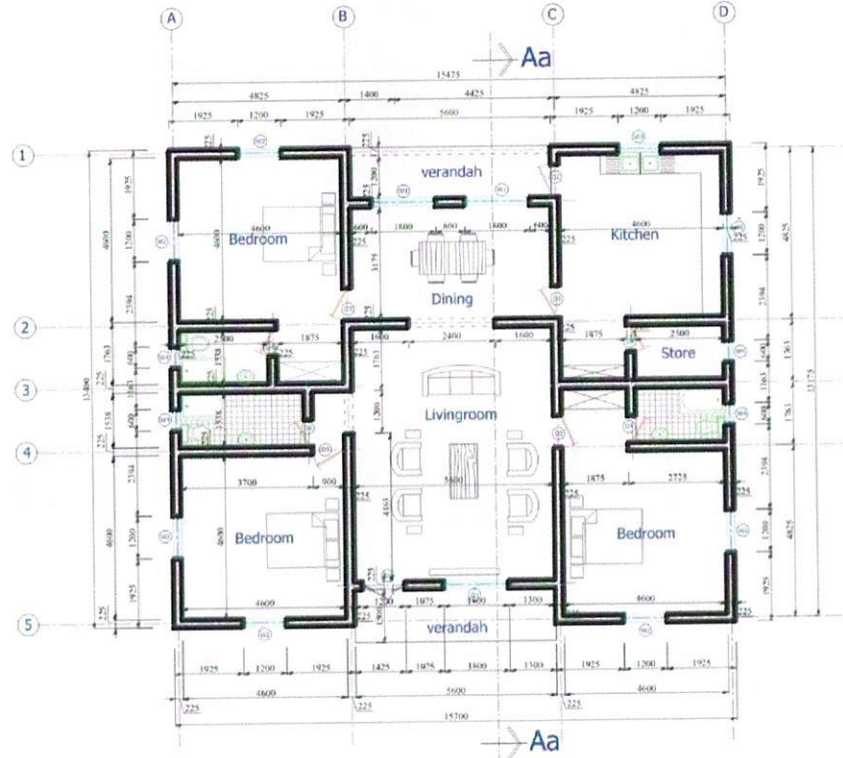
MECHANICAL WORKSHOP



This structure is provided to accommodate administration and the maintenance officers. It has provision for storing sports equipment. As may be required, a generator house, power transformer and change over



CENTER'S MANAGER'S RESIDENCE



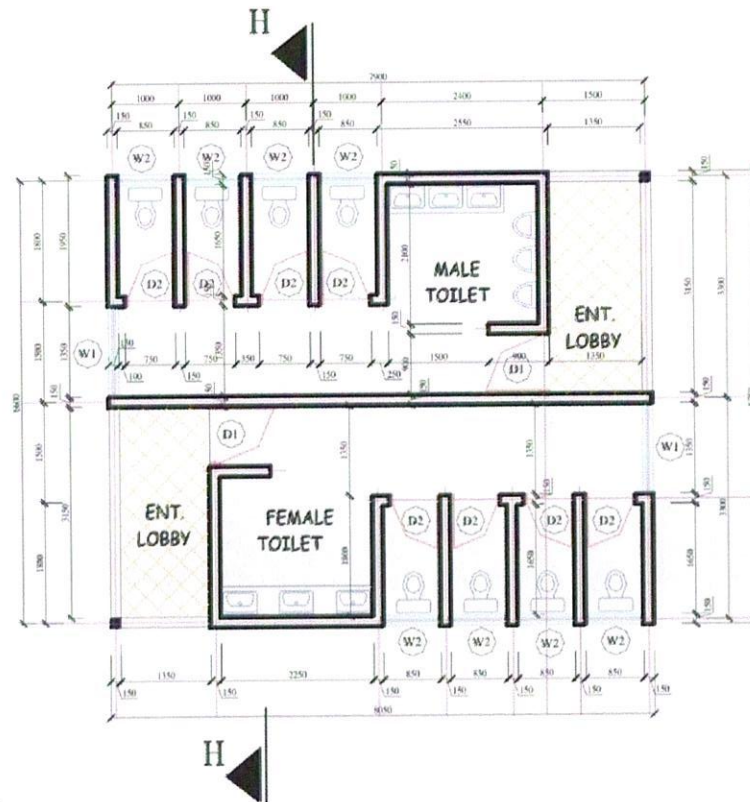
After Construction of such facilities, It is advisable to maintain vigil for twenty four (24) hours. One such way of doing it is to provide residential accommodation for the Manager or the Chief Security Officer within the premises. It is envisaged that some of the centres may be sited away from the town centres. It is a three (3) Bedroom Flat with necessary conveniences, kitchen, and a lounge.



PERSPECTIVE VIEW OF THE MANAGET'S RESIDENCE



PUBLIC TOILETS, BOREHOLES & WATER TANKS



Public Toilets

These are placed around areas of immediate needs to serve the Spectators and are distinct from athlete's toilets. They are provided for male and female spectators and are four in numbers.

Boreholes and Water Tank

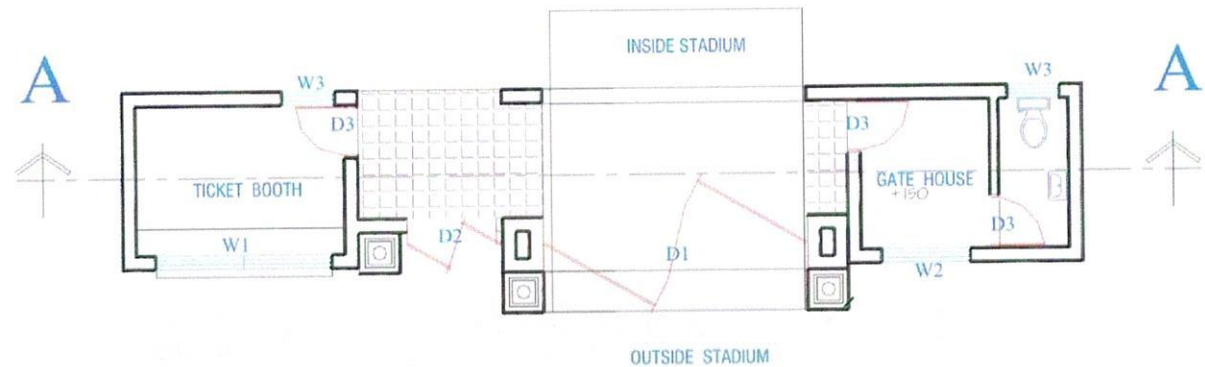
For the centre 2Nos boreholes are provided with an overhead water tank capacity of 50,000 litres to meet up with water demand.



PERSPECTIVE VIEW OF THE TOILET



GATES AND GATE HOUSES



FLOOR PLAN

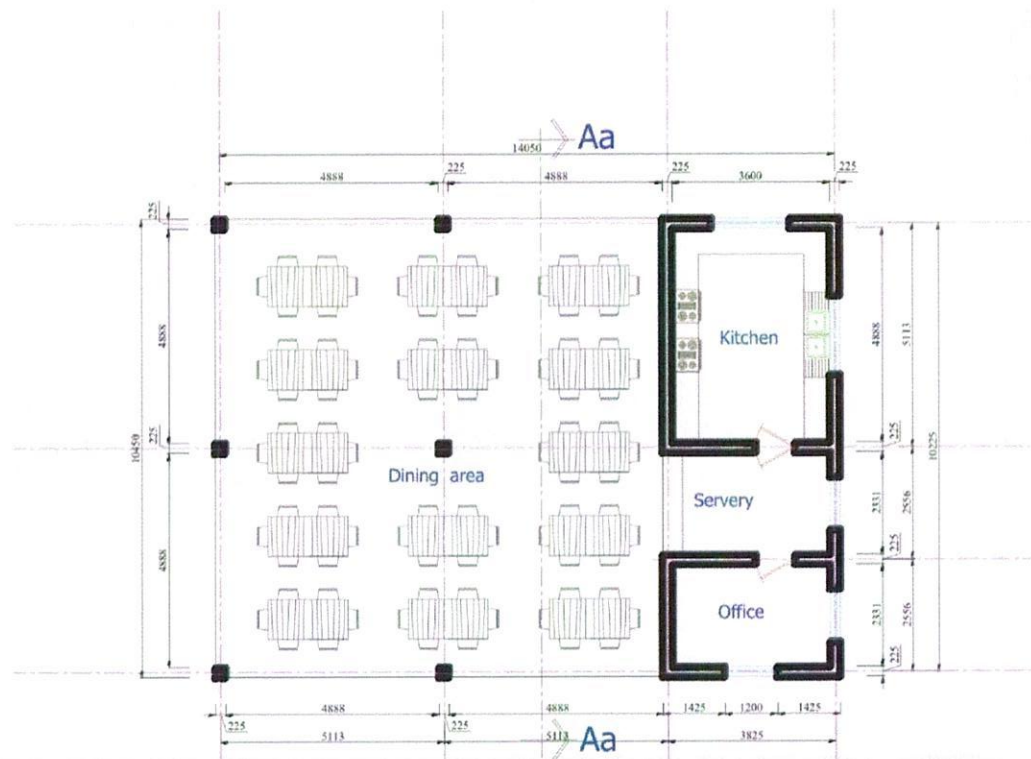
Two no access gates for effective security are provided. These gates have facilities for sales of Tickets. They shall be manned by centres Security personnel.



PERSPECTIVE VIEW OF THE GATE AND GATE HOUSES



RESTAURANT



A restaurant is provided to complement the provision facilities by selling foods and drinks to spectators and interested parties. It is a simple and open design which may be modified to conform with climatic dictates of its environment.



PERSPECTIVE VIEW OF THE RESTAURANT



OPTION B

Offers less sporting activities and affordability
in respect of funding capacity of States and
Local Governments.



CONCLUSION

The Concept of developing Community Sports Centres through the idea of the PPP is to have a synergy between all three tiers of Government at developing standard Sports facilities across the Nation with the sole aim of discovering young talented sports men and women and producing world class athletes at their young ages; It is also intended that sports development at the grassroots will help channel the energy of the youth to positive and productive uses.. Above all, sports is a tool for national integration, employment, wealth creation and wealth generation.

Engr. Sani M. Ndanusa FNSE
Honourable Minister and Chairman,
National Sports Commission,
Abuja.



**THANK YOU FOR YOUR
KIND ATTENTION.**

