

**PROGRESS REPORT ON WATER  
SUPPLY SECTOR**

**MAY 2007 – MAY 2009**

**OF**

**CHIEF SERVANT DR. MUAZU BABANGIDA ALIYU OON  
TALBAN MINNA**

**ADMINISTRATION**

**PROGRESS REPORT**  
**COMPLETED AND ONGOING WATER PROJECTS AS FROM**  
**MAY 29<sup>TH</sup> 2007, TO MAY 29<sup>TH</sup> 2008.**

**INTRODUCTION:-**

In line with the present administration of the chief servant of Niger State Dr. Muazu Babangida Aliyu OON Talban Minna; which is aimed at making Niger State one of the three top economics in the country by the year 2020. The Ministry of Water Resources and Rural Development and Niger State Water Board has recorded the following achievements:-

1. The sum of ~~N~~29,765,264.00 approved by the council for replacement of wooden electric poles with concrete ones and purchase of new electric motors, replacement of Water pumps, electric panels and armoured cables to Chanchaga and Bosso Water works.
2. A total of ~~N~~92,925,000.00 was approved for the supply of 1000 metric tones of Water treatment chemicals for the whole State.
3. Memorandum of understanding (MOU) was signed between SINECO and the State Government to provide for improved Water supply to our communities under millennium development goal (MDG) projects as follows:-
  - ❖ Bosso Dam ~~N~~210,000,000.00 for de-silting, stone pitching and replacement of dosing pumps at Bosso treatment plant

1. Procurement of three standby Generator set of (1000KVA) for Chanchaga Water at the cost of ~~₦108,000,000.00~~ <sup>₦11,519,550</sup> including construction of Generator House and installation.
- 2 Procurement of 33,000 litres of diesel for the stand by generator set at N100/litre ~~₦3,300,000.00~~
- 3 Procurement of one new transformer of (200KVA) and connection of 33kv line to Pogo Booster station at the cost of ~~₦3,612,000.00~~.
- 4 Refurbishment of the existing high lift pumps, low lift pumps, electric motors and electric panels including repairs and installations works by direct labour. = 22,487,148.92 x
- 5 The work has commence on construction of 450mm ductile pipeline outlet connected to Paida tank of (4,000,000litres) capacity by direct labour which was estimated to cost about ~~₦4,000,00.00~~.
- 6 Procurement of standby generator set (250Kva) for Bosso treatment plant at ~~₦11,500,000.00~~
- 7 Connection of 6" pipeline to Tunga area at the cost of ~~₦534,000.00~~
- 8 Procurement of Booster pump to Maitumbi area at the cost of ~~₦5,147,000.00~~
- 9 Procurement of 10,000 litres of Diesel for Bosso treatment plant at N1,000,000.00.

The total amount spent to date is **₦919,289,224.00**

**COMPLETED AND ON-GOING WATER PROJECT AS FROM  
MAY 29<sup>TH</sup> 2008 – MAY 29<sup>TH</sup> 2009.**

- 1 Rehabilitation & de-silting of Tagwai Dam by the contractor Messes (Infioquest International Limited) at the cost of **₦299,914,300.00**
- 2 Purchase of 10Nos water tankers by the contractor Messes (Auto-jeen Global Association) at the cost of **₦92,400,000.00**
- \* 3 Purchase of 4Nos High-lift pumps & installation by the contractor Messes (Enermet Nig. Ltd) at the cost of **₦79,344,000.00**
- 4 Supply of 475Nos of 400mm 175Nos of 160mm Upvc pipes and fittings for the relocation along AP Kpakungu to Mobile roundabout by the contractor Messes (All Works Nigeria Limited) at the cost of **₦110,304,681.25**  
*108,556,056.25*

The total amount spent from May 29<sup>th</sup> 2008 to date

**₦481,962,981.25**

*Signature*

## SUMMARY

Total amount spent from May 29<sup>th</sup> 2007 to May 29<sup>th</sup> 2008

N919,289,224.00

Total amount spent May 29<sup>th</sup> 2009 to date N481,962,981.25

Grand total spent on water project, from May 29<sup>th</sup> 2007 to date

N1,401,252,205.25

Attached are some demonstration pictures on various projects.

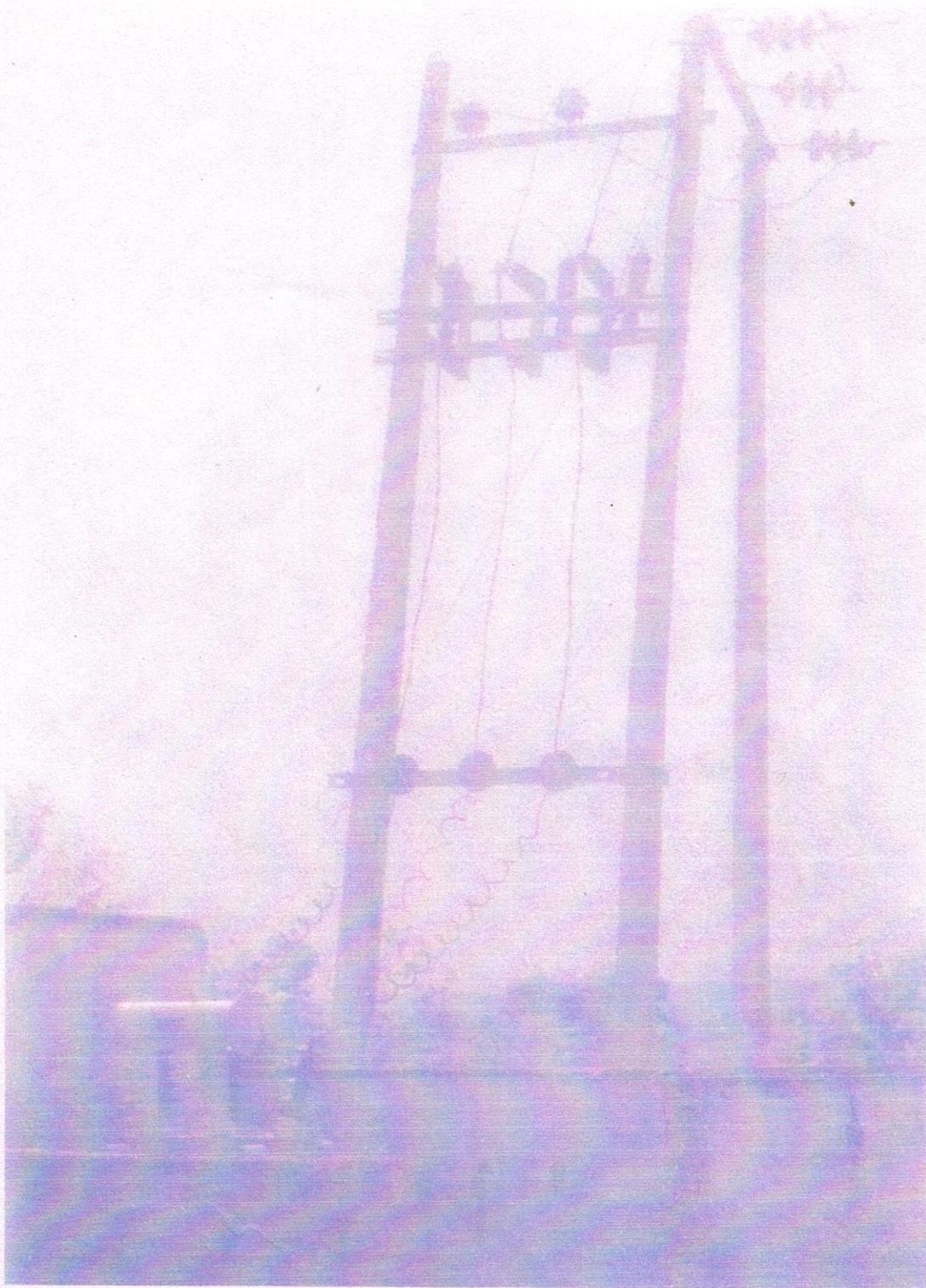
Thank your for your co-operation.



**REPLACEMENT OF WOODEN ELECTRICAL POLES WITH  
CONCRETE POLES FROM CITY GATE TO CHANCHAGA WATER WORKS**



**REPLACEMENT OF WOODEN ELECTRIC POLES WITH CONCRETE POLES  
FROM CITY GATE TO CHANCHAGA WATER WORKS**



**NEW TRANSFORMER OF (200 KVA)  
CONNECTED TO PAIKO-POGO POWER LINE**

---



**NEW GEN SET OF (1000 KVA) INSTALLED  
AT CHANCHAGA WATER WORKS**



**NEWLY GEN. SET OF (1000 KVA) INSTALLED  
AT CHANCHAGA WATER WORKS**





**SITUATION OF THE DAM BEFORE INTERVENTION**





**CLEARING AND TRANS-PLANTING OF BAHAMA GRASSES  
ALONG THE DOWN STREAM OF THE DAM**





**EVACUATION AND REMOVAL OF SILT FROM THE DAM**

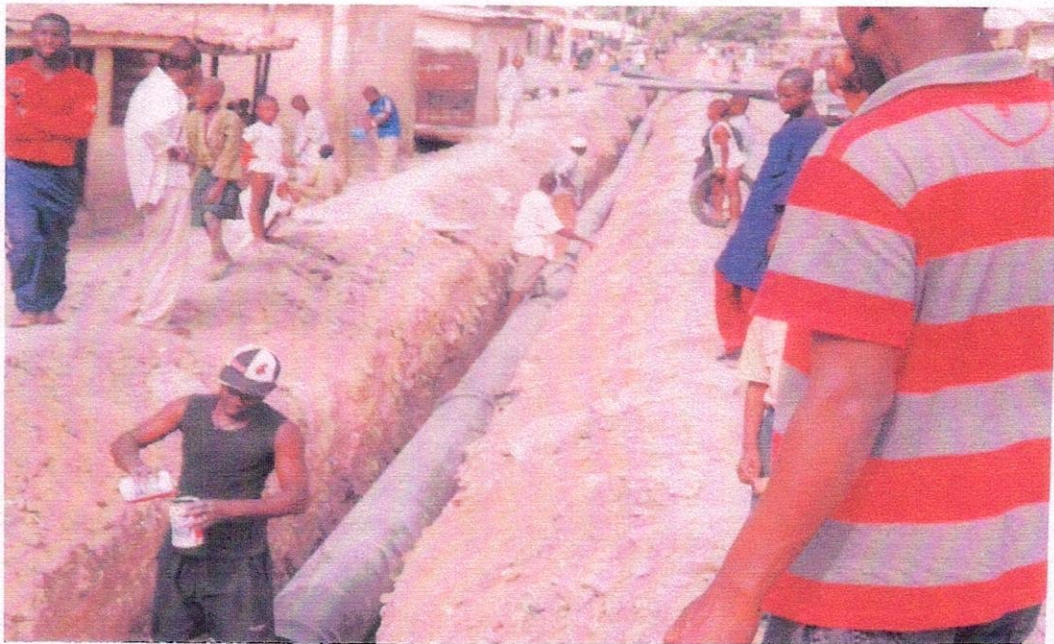




**SOME FITTINGS - 6" JOHNSON JOINTS**



**400mm PIPES FOR RELOCATION WORKS**



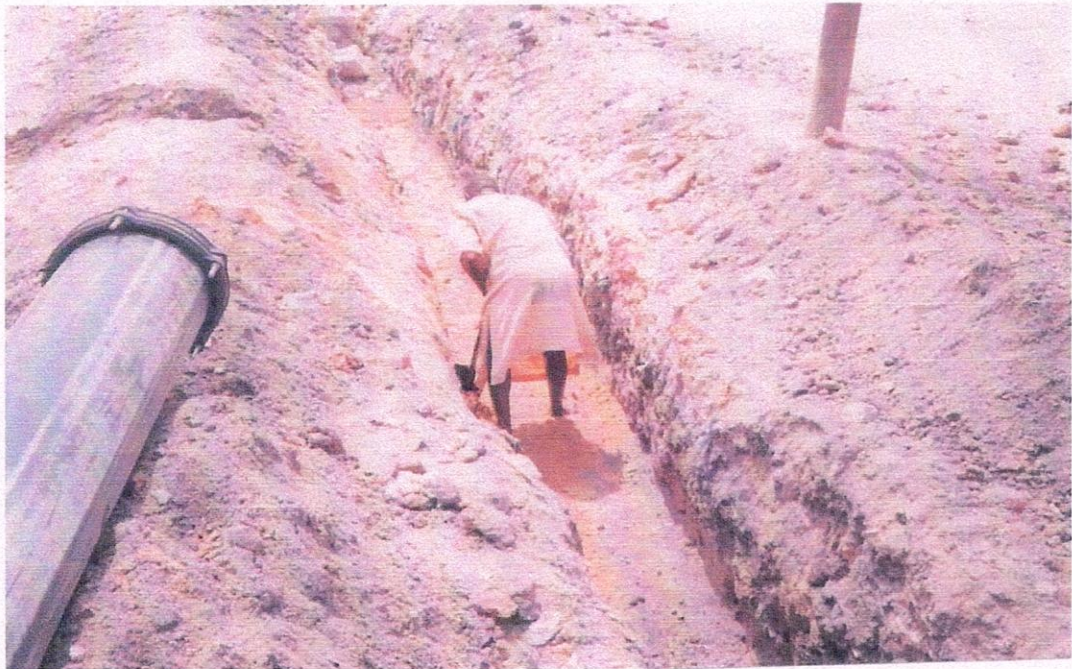
**LAYING OF 400mm Dia. uPVC PIPES WITHIN THE SITE**



**A 6" INSTALLED SLUICE VALVE**



**LAYING OF 160/100mm Dia. uPVC PIPES**



**PLACING SAND BLIND BEFORE LAYING PIPES**



**10NOS. NEW WATER TAMKERS TO  
SUPPLY WATER TO MINNA TOWN**



**FITTINGS FOR USE AT THE RELOCATION  
SITE 6" AND 4"**



**NEWLY PURCHASED HIGHLIFT PUMPS FOR  
CHANCHAGA WATER WORKS**



**PANELS FOR THE NEW HIGHLIFT PUMPS**





THE SUPPLIED (240KW) AND (75 KW) ELECTRIC MOTORS

REHABILITATION OF BOSSO  
PACKAGE TREATMENT PLANT

AND

DE-SILTING OF BOSSO DAM

BY

MILLINIUM DEVELOPMENT GOALS  
(MDG'S)

## **SNECOU GROUP OF COMPANIES**

In an effort of the present Administration to alleviate the water problem in Minna and its environs; it entered in to agreement under the memorandum of understanding (M.O.U) with SNECOU Group of Companies, who are contractor financial immediately it came in to power in 2007.

The contractor is to carry out the de- silting work at Bosso dam, re-channeling the water way dam to be rehabilitated, check the seepage and possible amendment to stop seepage if any and other activities at the dam site.

The contractor is also to replace all the damage equipment at Bosso treatment plant station, carry and install two (2nos) packaged treatment plant from Chanchaga to Bosso treatment station , supply and install transformer, dosing pumps, 2nos high lift 50 hp pumps, 2no high lift 100 hp pumps to Dutsen Kura booster station. Total renovation of all the existing structures in the water works perimeter fence round the water works e.t.c.

The work on the three site completed and commissioned by the Governor of Jigawa State on 6<sup>th</sup> May, 2009



INITIAL GROUND LEVEL BEFORE CUTTING





PICTURES SHOWING BULLDOZER CUTTING THE EXPANDED AREA





**Pay loader loading tipper with excavated materials  
for disposal**



**Bulldozer stock piling excavated material**



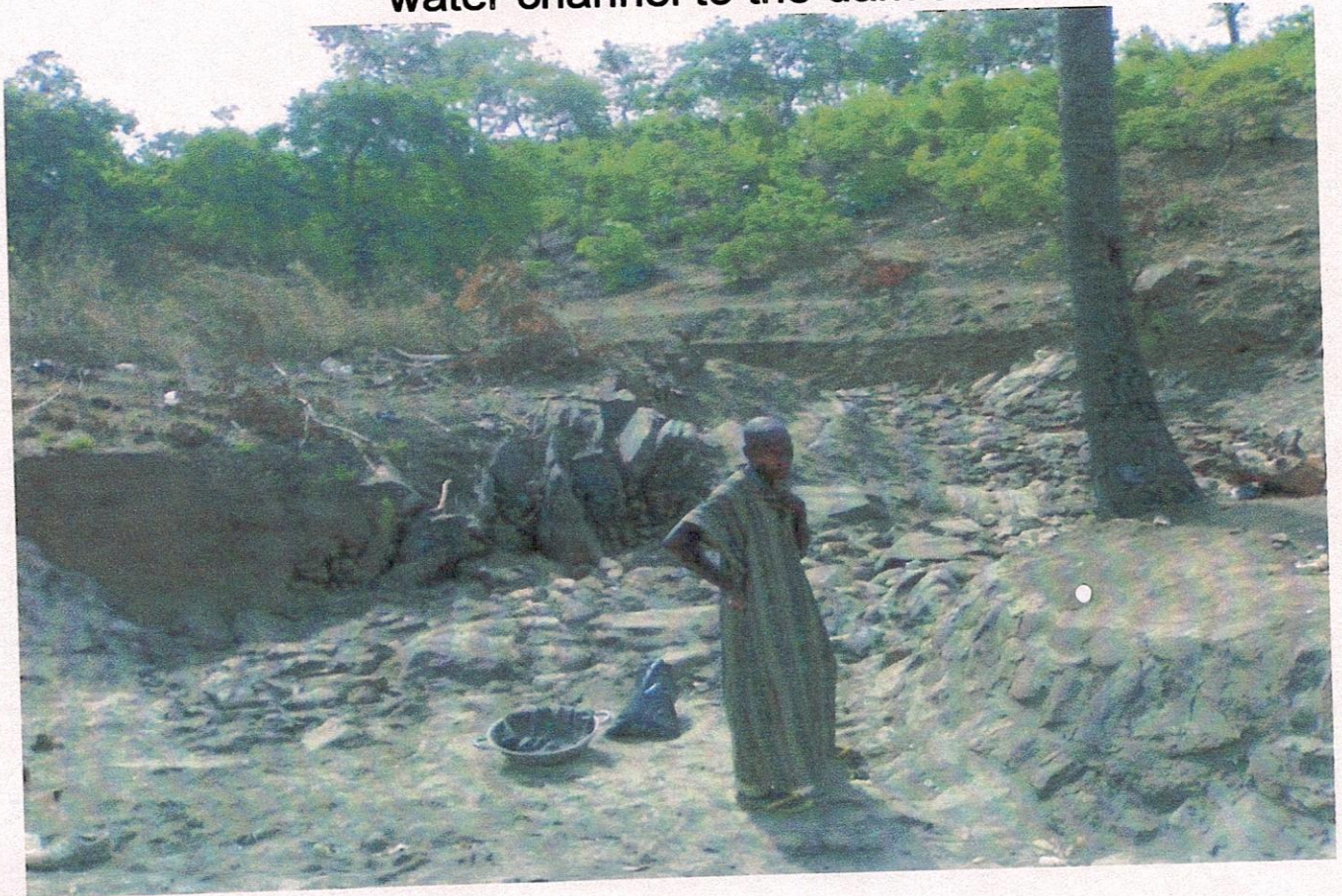
Picture showing cut area



Excavator removing de-silt material from water body



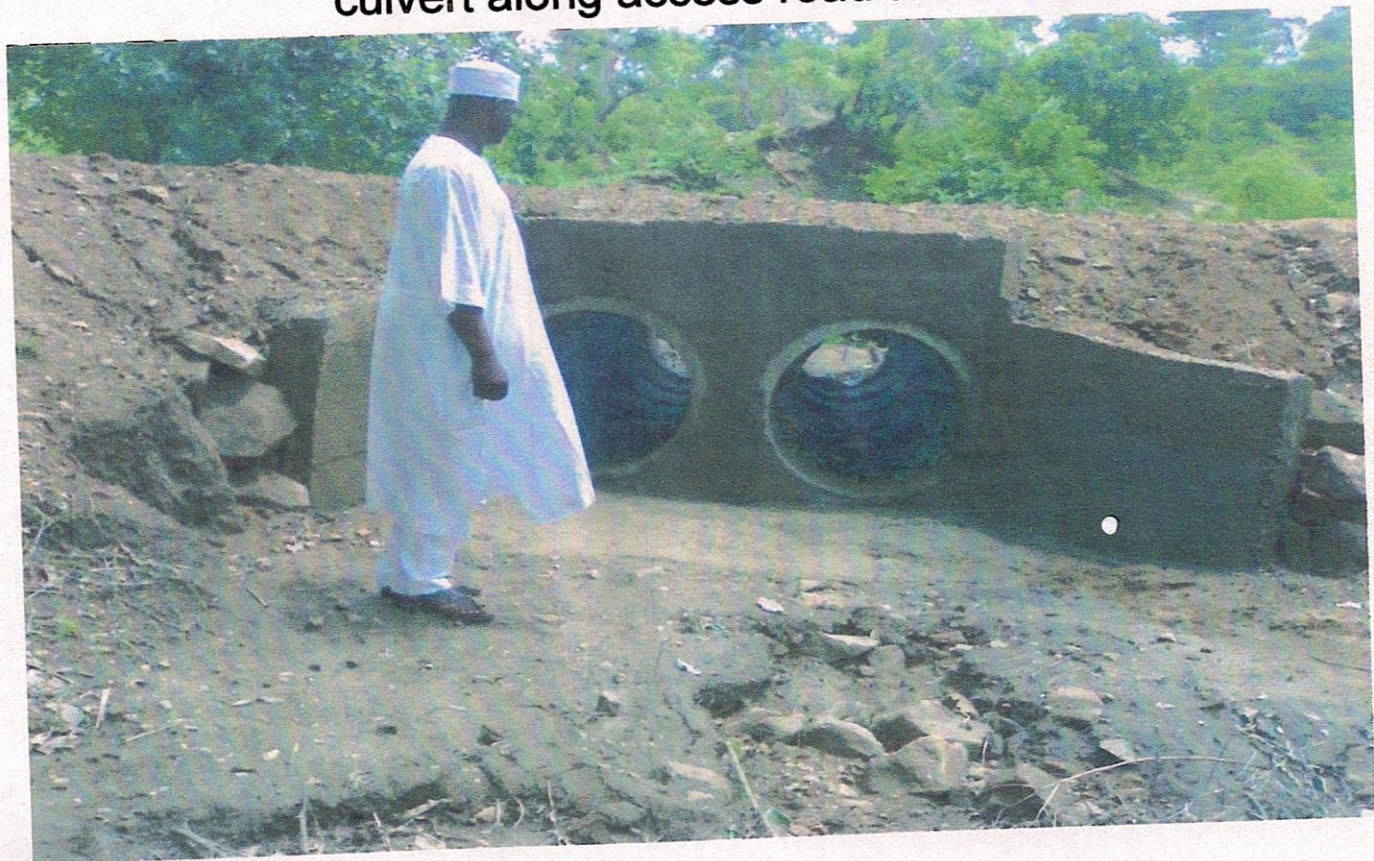
**Pictures showing stone pitching work along the water channel to the dam area**







**Pictures showing one cell and two cell constructed culvert along access road to dam site**





**Picture showing the gate way leading to dam site before renovation**



**Picture showing concrete work for diverting storm water along Pyata Road in to the resevoir**



**Pictures showing deposited De-silted materials  
from dam area**

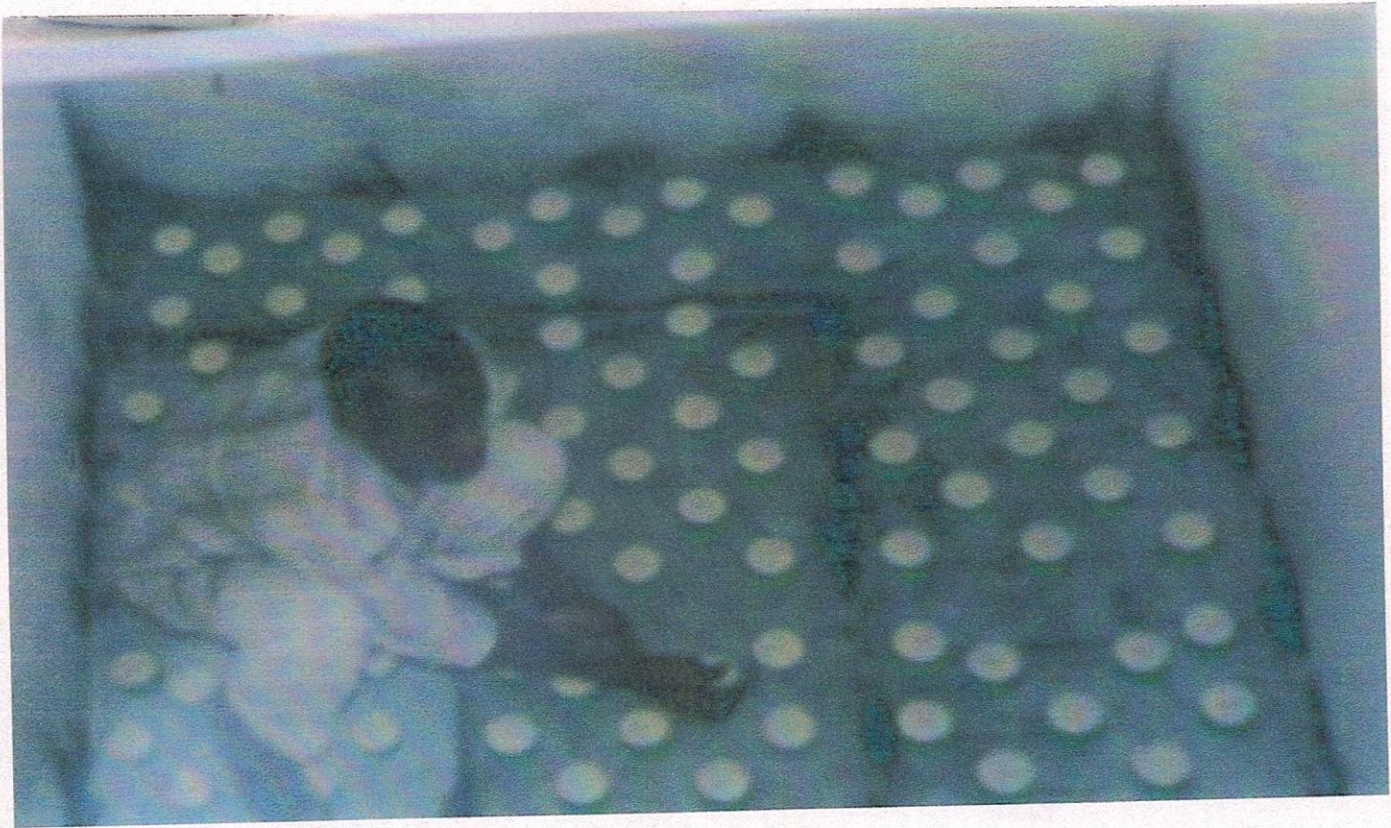




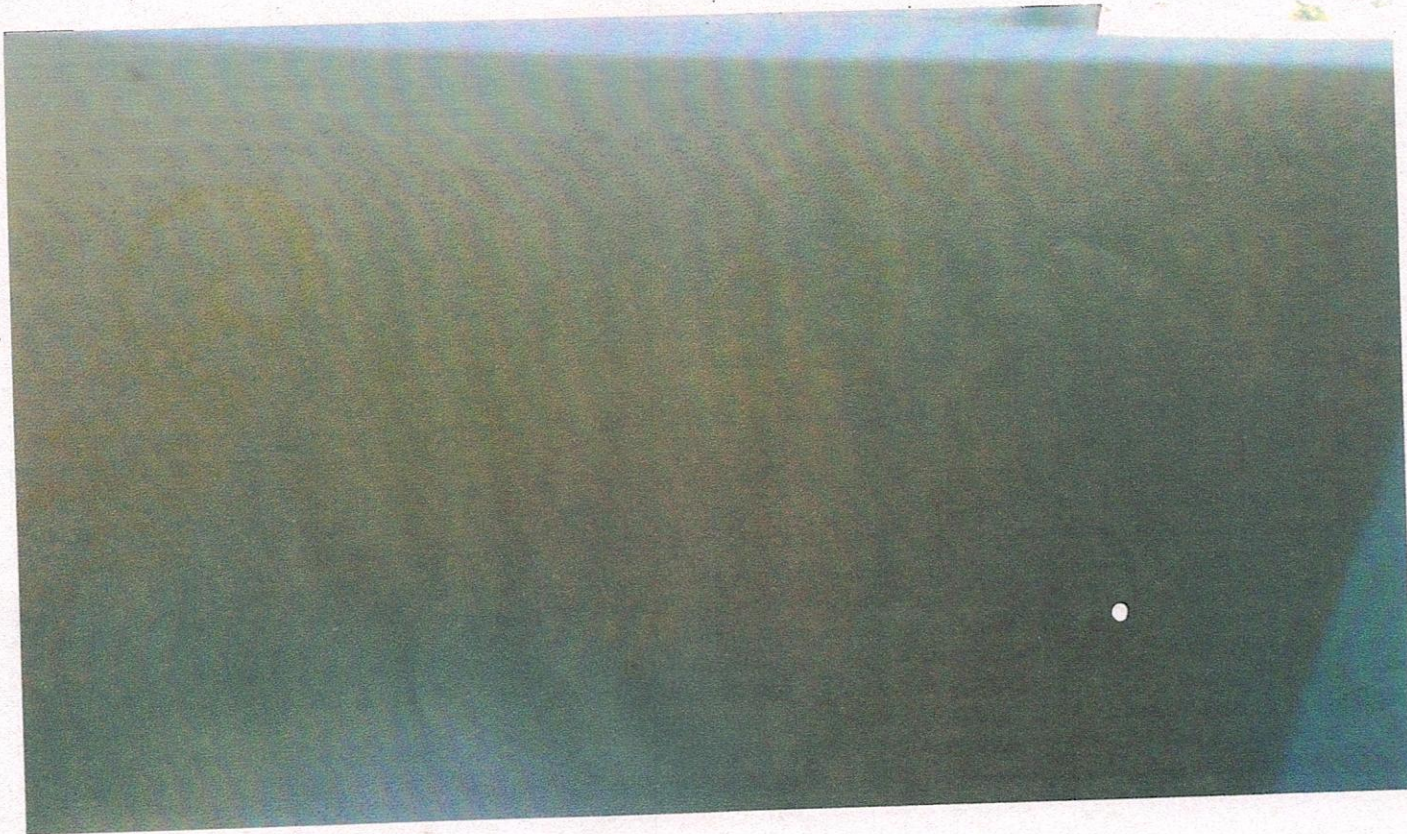
**Filter base before construction**



**Filter base construction**



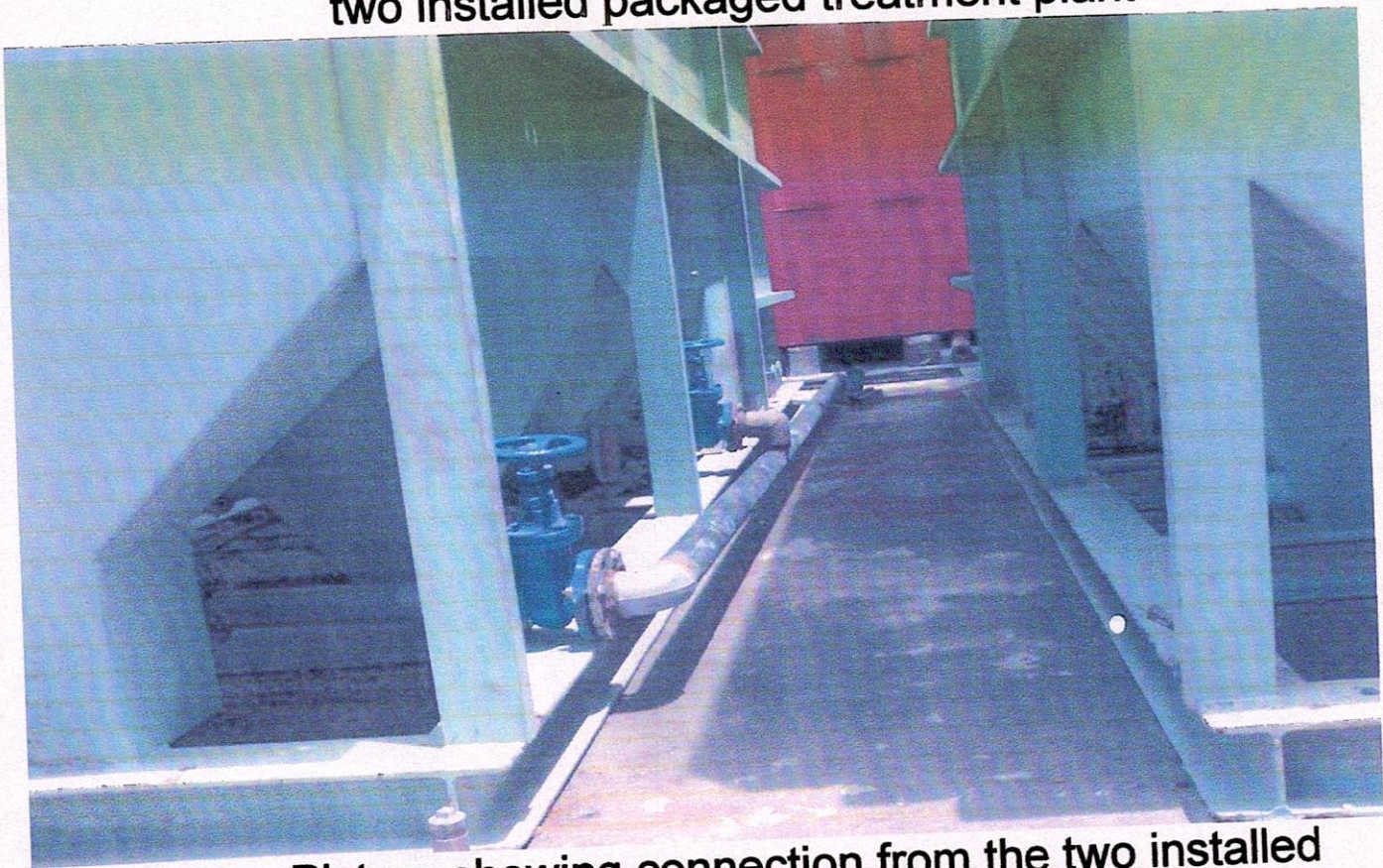
**Filter base**



**Sand media on filter base**



Picture showing connection from the main in to the two installed packaged treatment plant



Picture showing connection from the two installed packaged treatment plant to clear water tank



**Picture showing pipe connection to the distribution lines**



**Picture showing the two installed 50hp high lift pumps supplied**



Picture showing interconnection of two clear water tanks



Picture showing replaced chemical dosing pumps





**Picture showing the installation of 50hp high lift pump supplied**



**Picture showing 200kva transformer supplied**



**Picture showing hard core filling to enable access for mounting of the two packaged water treatment plants**



**Picture showing the two installed packaged water treatment plants**

**DRILLING OF**

**100 NOS.**

**OF**

**BOREHOLE**

**BY**

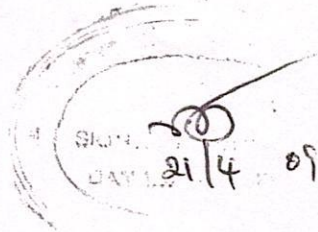
**RUWATSAN**



NIGER STATE OF NIGERIA

**SENIOR SPECIAL ASSISTANT TO THE GOVERNOR ON BOREHOLES AND WATER  
SUPPLY MONITORING**  
*OFFICE OF THE SECRETARY TO THE STATE GOVERNMENT, GOVERNMENT HOUSE MINNA*

20/04/09



The Permanent Secretary  
Ministry of Water Resources,  
Minna, Niger State.

Sir,

**MINNA 100 BOREHOLES: SITUATION REPORT AND WAY FORWARD**

The decision by the Chief Servant, Dr Mu'azu Babandida Aliyu OON, Talban Minna, to drill 100 boreholes in Minna metropolis and environs has been justified by the success rate attained by the functional ones in alleviating the water crisis in some areas. In all areas visited long queues can be seen around the boreholes as people troop out at all hours of the day to get water from the facility. The pictures below tell the story better.



Fig. 1 Gbeganu Community

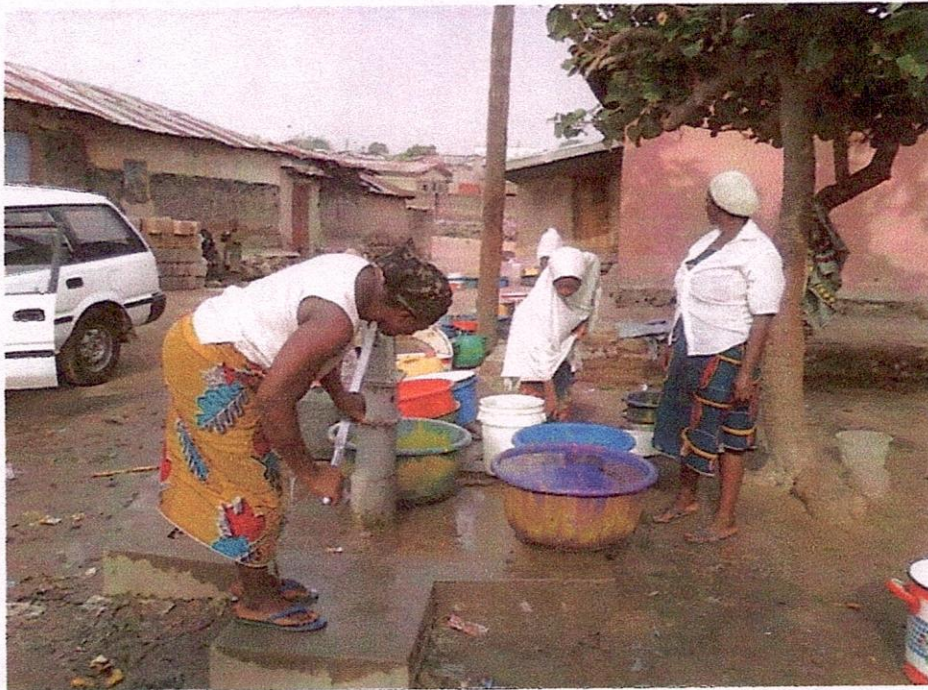


Fig. 2 Kongila



Fig. 3 Unguwan Daji



FIG.4 Oduoye Quarters



**PAT 401 DRILLING RIG, COMPRESSOR AND SUPPORTING VEHICLES FOR RURAL WATER SUPPLY PROGRAM**



**BOREHOLES COMPLETED AND INSTALLED WITH HANDPUMPS**

S/NO	LOCATION	WARD	NO OF B/HOLES	LOT NO	CONTRACTOR	COORDINATES	
						E	N
1	E.R.C (F Layout)	Nasarawa C	1		Africa Water Engineering	6 32.751	9 38.167
2	Kofar Musa Koroso	Nasarawa C	1		Africa Water Engineering	6 33.100	9 37.636
3	Kofar Mal. Idi (Tsohon Soja)	Nasarawa C	1	2	Africa Water Engineering	6 32.930	9 37.925
4	Liberty Kuchazi	Tudun Wada North	1		Africa Water Engineering		
5	F Layout Extension	Nassarawa C	1		Africa Water Engineering	6 32.810	9 38.162
<b>Sub - Total</b>			<b>5</b>				
1	Gbeganu	Minna South	1	12	Umdrill Nig Ltd		
1	Mattumbi Prim School	Malyumbi	1		Adex Investment	6 34.537	9 38.168
2	Bida close	Minna Central	1		Adex Investment Nig Ltd	6 32.492	9 36.741
3	Railway Qtrs (Opposite Kuyambana Prim Sch)	Minna Central	1	3	Adex Investment Nig Ltd		
4	Behind Royal Clinic	Minna Central	1		Adex Investment Nig Ltd		
5	Chrisbo Road(Front of Alh. Biri biri House)	Minna Central	1		Adex Investment Nig Ltd		
1	Angwan Nupawa along Audu Tela rd	Tunga North	1		Africa Water Engineering	6 33.761	9 36.226
2	Kofar Gidan Malanguwan Sauka Kahuta	Tunga South	1	6	Adex Investment Nig Ltd	6 32.153	9 35.452
3	Behind Izala Mosque Tunga	Tunga North	1		Adex Investment Nig Ltd	6 33.744	9 35.931
1	Uphill (UBE Prim. Sch)	Tunga North	1		Adex Investment Nig Ltd	6 34.179	9 36.141
2	Kafin Tella(Along Aloe vera Guest Inn)	Tunga North	1		Adex Investment Nig Ltd	6 34.351	9 35.847
3	Banana/Hamdala area	Tunga North	1	5	Adex Investment Nig Ltd	6 33.954	9 35.835
4	Anguwan Kampani/Pampi Village	Tunga North	1		Adex Investment Nig Ltd	6 34.026	9 35.391
5	Behind Emir's Palace	Nasarawa A	1		Adex Investment Nig Ltd	6 33.237	9 37.342
<b>Sub - Total</b>			<b>13</b>				
1	Kwarkwata (by Gidan Malanguwa)	Limawa B	1		A.M Machika Nig Ltd	6 30.433	9 37.582
2	Shanu (Gidan Maiaguwa)	Limawa B	1	8	A.M Machika Nig Ltd	6 30.296	9 36.304
3	Kutiriko	Limawa B	1		A.M Machika Nig Ltd	6 31.069	9 36.736
<b>Sub - Total</b>			<b>3</b>				
1	Kofar Premier Hotel	Makera	1		J.O Ibebuike		
2	Kofar Alh. Saidu	Makera	1	9	J.O Ibebuike	6 32.697	9 36.960
3	Kofar Mal. Tanimu	Makera	1		J.O Ibebuike	6 32.739	9 36.962
<b>Sub - Total</b>			<b>3</b>				



<b>BOREHOLES COMPLETED AND INSTALLED WITH HANDPUMPS</b>									
1	Kofar Aminu Gurmana Soje B	Minna South	1			Inter - System			
2	Gidan Malanguwan Barkin Sale	Minna South	1			Inter - System	6 32.153	9 35.452	
3	Late Mallam Sule (Soje A)	Minna South	1	11		Inter - System	6 31.836	9 35.875	
4	By Bida Road (by Malanguwa House)	Minna South	1			Inter - System	6 31.891	9 35.972	
5	Kpakungu off Oando filling station	Minna South	1			Inter - System			
	<b>Sub - Total</b>		<b>5</b>						
1	Sabo Titi (behind Shango Tawurin Maishayi)	Tunga South	1			DURBHAR Global Resour	6 33.487	9 35.846	
2	Umaru Ubandoma Area	Tunga South	1	15		DURBHAR Global Resour	6 33.483	9 35.552	
	<b>Sub - Total</b>		<b>2</b>						
1	Audu Rani Paiko's Residence	Sabon Gari	1			Geosolve Engineering			
2	Kofar Marafa	Sabon Gari	1	19		Geosolve Engineering			
3	Alh. Ali Mai-kwai	Sabon Gari	1			Geosolve Engineering			
	<b>Sub - Total</b>		<b>3</b>						
1	Sayako(by Alh Sule's residence)	Sabon Gari	1	20		Kyungchun Drilling	6 33.585	9 37.364	
2	Tudun Natsira		1			Kyungchun Drilling			
3	S.S.G's Office		1			Kyungchun Drilling			
	<b>Sub - Total</b>		<b>3</b>						
1	Oduoye Ctrs (Behind ECWA Good News Church)	Minna Central	1			BYSMAK Interlinks			
2	123 Ctrs (By N.Y.S.C. Lodge)	Minna Central	1	4		BYSMAK Interlinks			
3	Keteren Gwar(By Late Alh. Yunusa Kadara Hou	Minna Central	1			BYSMAK Interlinks			
	<b>Sub - Total</b>		<b>3</b>						
	<b>TOTAL</b>		<b>41</b>						

**BOREHOLES THAT ARE YET TO BE DRILLED OR DECLARED ABORTIVE**

S/NO	LOCATION	WARD	LOT NO	CONTRACTOR
1	Kofar Late Mal. Agwai water	Nasarawa C	1	Eggan Resources
2	Kofar Musa Gada	Nasarawa C		Eggan Resources
3	Kofar Alh Dankwatakwai	Nasarawa C		Eggan Resources
4	Kofar Malanguwa (Sabon Nasarawa)	Nasarawa C		Eggan Resources
5	Kofar Malanguwan (Texaco)	Nasarawa C		Eggan Resources
6	105 Paída	Nasarawa A		Africa Water Engineering
7	123 Qtrs (By N. Y. S. C. Lodge)	Minna Central		BYSMAC Interlinks
8	Kofar Adawa	Nasarawa A		BYSMAC Interlinks
9	Tunga Market site	Tunga North	5	Adex Investment Nig Ltd
10	Angwan Nupawa along Audu Tela rd	Tunga North		Africa Water Engineering
11	Mal Naibi Area	Tunga North		Adex Investment Nig Ltd
12	Okada Road/by Mustafa Ara's House)	Limawa B	7	Adex Investment Nig Ltd
13	Dutsen Kurán Hausa (Central Area)	Limawa B		Adex Investment Nig Ltd
14	Type 'B' Qtrs by James Gara Street or Bauchi Road	Limawa B		Adex Investment Nig Ltd
15	Dutsen Kurán Gwari (by Central Mosque)	Limawa B		Adex Investment Nig Ltd
16	Bajejo I (Mall. Ubainu Islamic school)	Limawa B		Adex Investment Nig Ltd
17	Bajejo 2 (by Gidan Audu)	Limawa B	8	A.M Machika Nig Ltd
18	Fadikpe(Umaru Makama House)	Limawa B		A.M Machika Nig Ltd
20	Ward Head's office	Makera	9	J.O Ibebuike
21	Kofar Madaki	Makera		J.O Ibebuike
22	Hassan Okururu	Makera	10	
23	Police Barracks	Makera		
24	Railway (in Railway Station)	Makera		
25	Pigery(around S. U Garba House)	Makera		
26	Angwan Mahauta (opposite gidan Barde Pawa)	Nasarawa A		
27	Police Outpost Barkin Sale	Minna South		Umdrill Nig Ltd
28	Angwan Makabarta(by kofar Maiyaki)	Minna South	12	Umdrill Nig Ltd
29	Kofar Yakubu Umaru	Minna South		Umdrill Nig Ltd
30	Kofar Hakimi (Rigizo)	Nasarawa A		Umdrill Nig Ltd

Since commencement of the exercise in March this year, sixty four boreholes have been drilled out of which forty one have been certified okay, installed and are in use by the benefiting communities.

The remaining fifty nine (59) boreholes were earmarked for areas that have been classified as groundwater negative areas, that is they are located mostly within the pink and red areas of the hydrogeological map model of Minna prepared by this author. All the abortive or very poor boreholes drilled were located within these areas which have a success rate of only 30%.

Presently the work has stopped as a result of none availability of approved areas located in the green areas of the map. Contracts have already been awarded and the contractors are awaiting drill sites.

The affected areas are Nasarawa A,B and C wards, Limawa A and part of B, part of Sabon Gari ward, part of Minna South and Tudun Wada South wards.

In view of this the following suggestions are put forward;

1. Seek approval from the State Executive Council to relocate the boreholes to more promising areas so that the 100 boreholes target can be met.
2. Conduct an independent comprehensive geophysical survey in the disadvantaged areas to ensure that no stone is left unturned in providing boreholes even to the disadvantaged area. However funding the surveys will be a constraint to this option except if fund can be appropriated from another source.
3. Hasten up the provision of surface tank facilities to the 60 communities so far identified to alleviate the water problems in such communities.

Even though the boreholes are regarded as interim measures, the long queues functioning ones are presently experiencing indicate that even the 100 boreholes may not be enough to effectively combat the problem. These boreholes will continue to serve the purpose of water supply for a long time to come as over 70% of them can be motorized to compliment the public water supply.

It will be highly appreciated if action is expedited on this as most of the contractors have been mobilised and are on standby with their drilling machines but with no site to drill.

Please find attached the list of all the drilled functional boreholes and also that of those that were not drilled or that were drilled but declared abortive.

Thank you.



21/04/07

***Idris-Nda A***  
***SSA Boreholes and water***  
***Supply monitoring***

Cc: SSG