

15	Opp. Alabi farm Ijesha Isu	40713	300	S.E.A	Italy	1998	2000	Good	Fence with Gate	11KVA/ST
16	Opp. United Apostolic Church, Ijesha-Isu	1003000596	300	Elsewedy Electric	Nigeria	2010	2011	Good	Fence with Gate	11KVA/ST
17	Market Square Egbe Odo, Ijesha-Isu	28476	200	Newton	Italy	2011	2011	Good	Fence with Gate	11KVA/LG
18	Obadooro street, Ikole	4334415	300	Nucon	India	2003		Good	No Fence	11KVA/Not Working
19	Ilogbo Junction, Usin- Ekiti	49129	200	ITB	Brazil			Good	Fence with Gate	11KVA/LG
20	Otunja Rural ElectricationI	1LPL458358	300	ABB		2010	2011	Good	Fence with Gate	11KVA/ST
21	Otunja Rural Electrication II	1LPL458359	300	ABB		2010	2011	Good	Fence with Gate	11KVA/ST
22	State Specialist Hospital Ikole	9N0503	300	Pauwels		2000		Good	Fence with Gate	11KVA/ST
23	Ijebu-Agege, Ikole Ekiti	1LPL417669	300	ABB		2008		Good	Fence with Gate	11KVA/ST
24	Temidire Rural Electrification, Iluga	1003000488	300	Elsewedy Electric	Nigeria	2010	2011	Good	Fence with Gate	11KVA/ST
25	Omodowa Junction, Ikole	14117/13	500	Elco		2001		Good	Fence with Gate	11KVA/ST
26	Ara-Ekiti Electrification		200	Siemens	Germany			Good	Pole Mounted	11KVA/ST
27	Infront of Palace Ipao	19507	200	Marson	India			Good	Fence with Gate	11KVA/ST
28	Aimino Street, Ipao	19496	200	Marson	India			Good	Fence with Gate	11KVA/ST
29	Ipao	19511	200	Marson	India			Good	Fence with Gate	11KVA/ST
30	Orisumbare Oke Ayedun	K024	500	Kotco	Nigeria			Good	Fence with wire	11KVA/ST
31	Sawmill Ire Road Asin	N82	300	Nucon	India			Good	No fence	11KVA/ST



**VALUATION AND RECOVERY OF  
EKITI STATE INVESTMENT IN  
POWER HOLDING COMPANY OF NIGERIA PLC**

**PHOTOGRAPHS OF TRANSFORMER SITES**

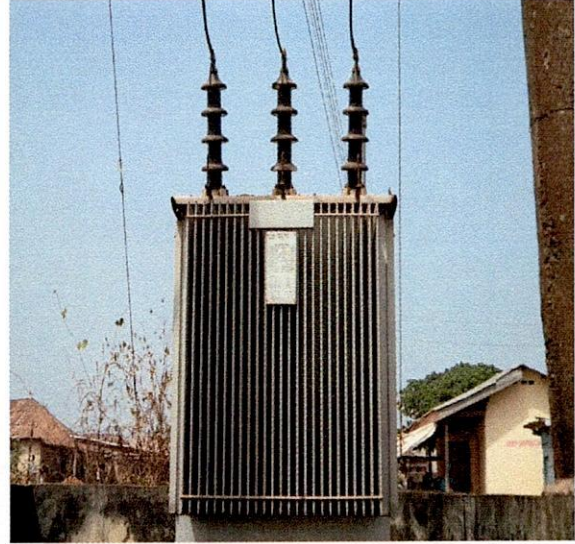
**Ileje Meje LGA**



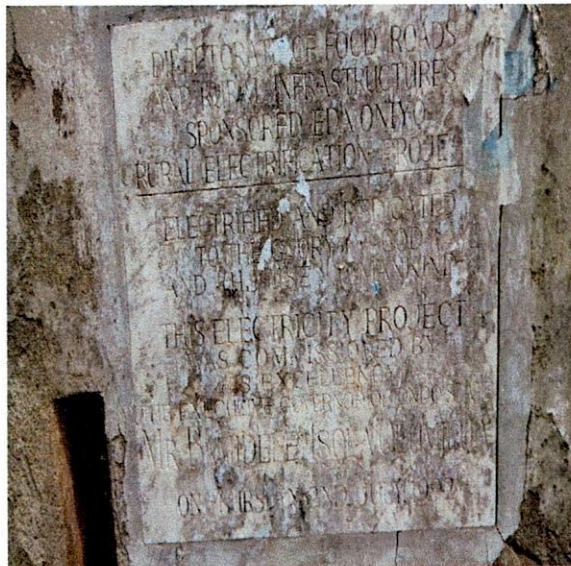
## Transformer Photograph, North Senatorial District Ileje Meje Local Government Area



Ileje-Meje LG-200KVA 33/0.415KV Bi Bong Transformer, S.N.030059 Opposite St. Boniface Catholic Nursery & Primary School, Iye-Ekiti.



Ileje-Meje LG-200KVA 33/0.415KV Emo-Ohrid Transformer, S.N.97119, Eda- Oniyo, Ekiti.



A plaque with the Ileje-Meje LG-200KVA 33/0.415KV Emo-Ohrid Transformer, S.N.97119 Eda- Oniyo, Ekiti.



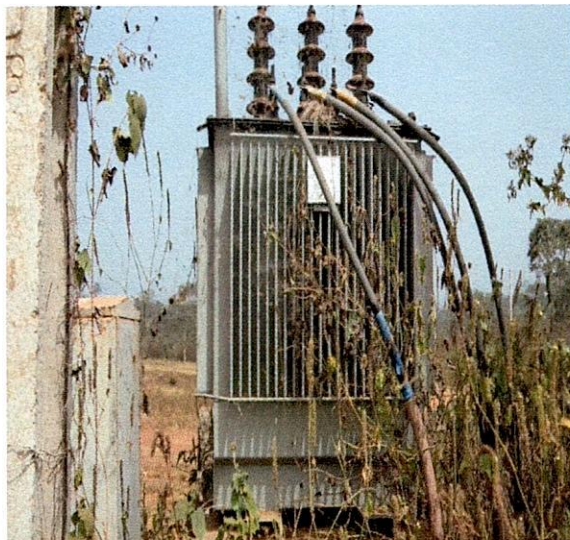
Ileje-Meje LG-200KVA 33/0.415KV Minel Transformer, S.N.107173, Opposite Unity Guest House, Ileje-Meje.



Ileje-Meje LG-200KVA 33/0.415KVABB Transformer, S.N.DT5612406 Opposite Community Primary School, Ipere-Ekiti.



Ileje-Meje LG-200KVA 33/0.415KVBi Bong Transformer, S.N.K030064431 Beside Market Sqaure, Ewu-Ekiti.



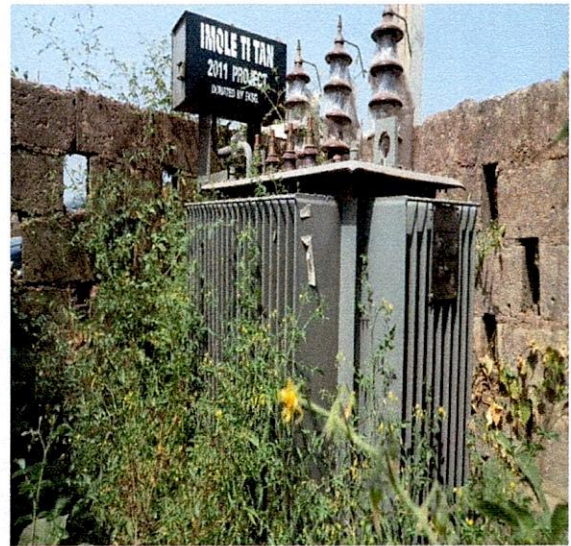
Ileje-Meje LG-300KVA 33/0.415KV ABB Transformer, S.N. DT4012806 at Ipere Comprehensive High School, Ipere-Ekiti.



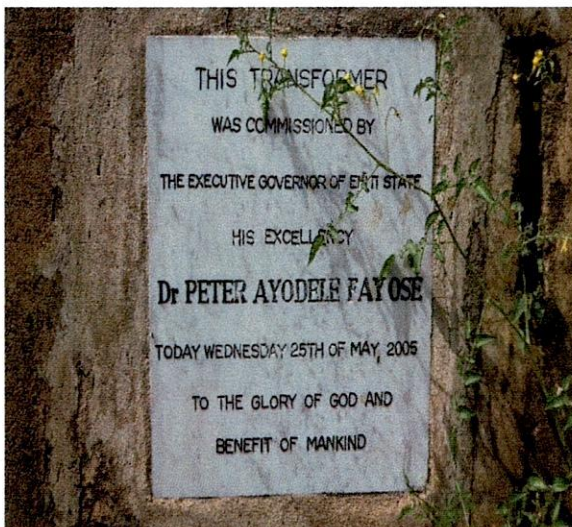
Ileje-Meje LG-300KVA 33/0.415KV Elprom Transformer, S.N.141177 at Eda- Oniyo 'T' Junction.



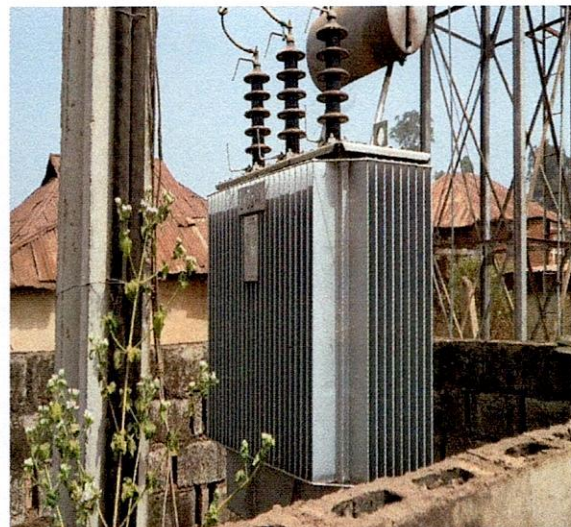
Ileje-Meje LG-300KVA 33/0.415KV Else Wedy Transformer, S.N.1003000437 Inside the Palace, Iye-Ekiti.



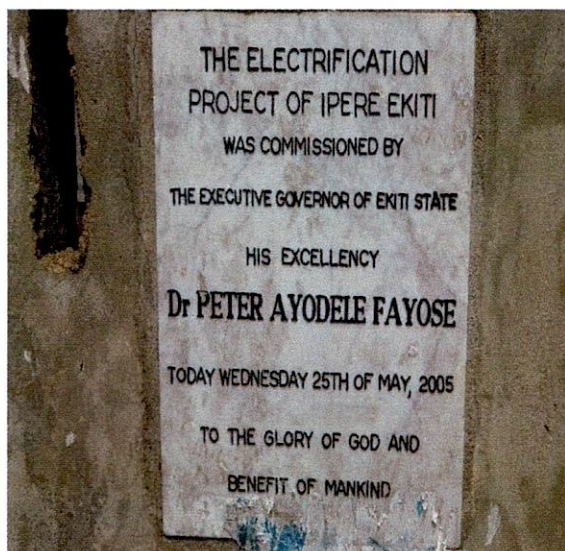
Ileje-Meje LG-300KVA 33/0.415KV Else Wedy Transformer, S.N.K1003000431 Along Ewu Road, Iye-Ekiti.



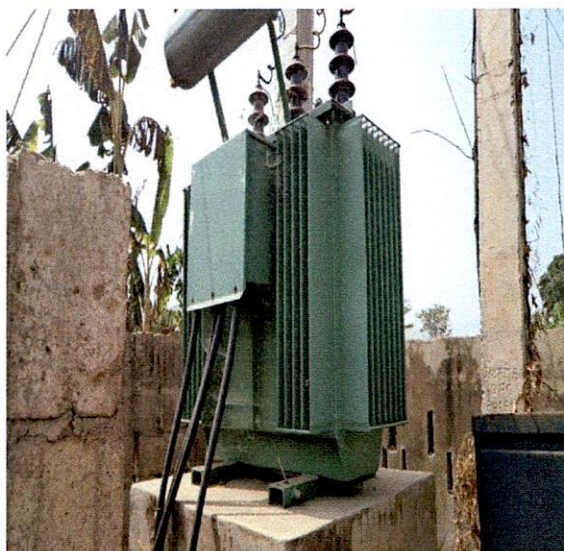
A Plaque at Ileje-Meje LG-300KVA 33/0.415KV Else Wedy Transformer, S.N.K1003000431 Along Ewu Road, Iye-Ekiti.



Ileje-Meje LG-300KVA 33/0.415KV Emo-Ohrid Transformer, S.N.38252 at Ipere Market Square, Ipere-Ekiti.



A Plaque at Ileje-Meje LG-300KVA 33/0.415KV Emo- Ohrid Transformer, S.N.38252 at Ipere Market Square, Ipere-Ekiti.



Ileje-Meje LG-300KVA 33/0.415KV Koncar Transformer, S.N 590746 at Ijaro Ekiti Village.



Ileje-Meje LG-300KVA 33/0.415KV Koncar Transformer, S.N. at Iludun Command Junior High School, Isan Road.



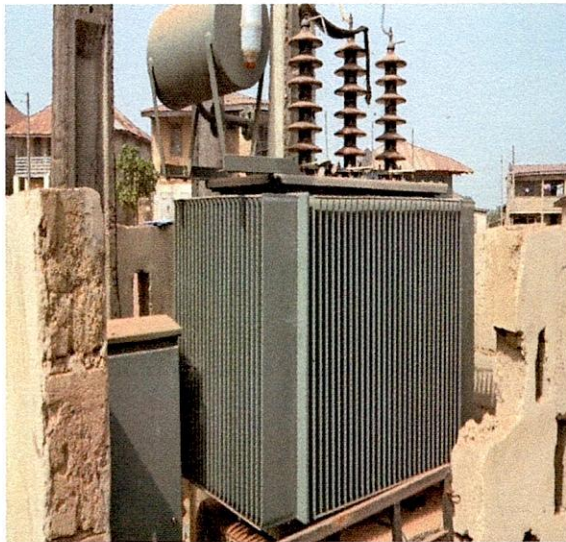
Ileje-Meje LG-300KVA 33/0.415KV Koncar Transformer, S.N.590785 at Iludun Ayo Village.



Ileje-Meje LG-300KVA 33/0.415KV Konkar Transformer, Along Ipere Road, Iye-Ekiti.



Ileje-Meje LG-300KVA 33/0.415KV Minel Transformer, S.N.107576 at Oke Okin Street, Iludun.



Ileje-Meje LG-500KVA 33/0.415KV Elprom Transformer, S.N.145893 Beside Ewu Junction Iye-Ekiti.



Ileje-Meje LG-500KVA 33/0.415KV Kotco Transformer, S.N.K140 Opposite Ijeshamodu Mordern Market, Ekiti.



A plaque at Ileje-Meje LG-500KVA 33/0.415KV Kotco Transformer, S.N.K140 Opposite Ijeshamodu Mordern Market, Ekiti.



Ileje –Meje LG-500KVA 33/0.415KV Zennaro Transformer, S.N.49344 Opposite Palace, Iye-Ekiti.



Ileje-Meje LG-KVA 33-0.415KV Transformer, S.N., Along Kwara State Road, Ijeshamodu.



**Ekiti State Investment in PHCN Distribution Network  
Field Note Inspection**

**Date of Inspection:** 13/12/2011 - 15/12/2011

**LGA:** Ilejemeje LG

S/N	Location	Serial No	Rating (Kva)	Make /Model	Country of Man.	Date of Man.	Date of Comm.	Condition of Feeder Pillar	Construction Detail	Remarks
1	Along Ipere Rd, Iye-Ekiti		300	Koncar	Croatia	2009	2007	Good	Fence with gate.	33KVA/ST
2	Ipere Comph. High Sch. Ipere	DT-40128-06	300	ABB	Turkey	2006	2007	Good	Fence with gate	33KVA/LG
3	Ipere Market Square	38252	300	Emo-Ohrid	Macedonia	2001	2005	Good	Fence with no gate	33KVA/ST
4	Opp. Community Pry Sch. Ipere	DT-56124-06	200	ABB	Turkey		2006	Good	Fence with no gate	33KVA/LG
5	Iludun Ayo village	590785	300	Koncar	Croatia	2009		Good	Fence with gate	33KVA/LG
6	Iludun Comm. Jr. High Sch. Isan Rd.		300	koncar	croatia	2009		good	Fence with gate	33KVA/LG Not Working
7	Oke-Okin street, Iludun	107576	300	Minel Trafo	Yugoslavia	1988		good	Fence with wire	33KVA/ST
8	Eda Oniyo Ekiti	97119	200	Emo-Ohrid	Yugoslavia	1990	1992	Bad	Fence with gate	33KVA/ DEFRI
9	Ijaro Village	590746	300	Koncar	Croatia	2009	2010	Good	Fence with no gate	33KVA/LG
10	Eda Oniyo "T" junction	141177	300	Elprom	Bulgaria	2010		Good	Fence with gate	33KVA/ST
11	Opp. Unity Guest House, Ilejemeje	107173	200	Minel Trafo	Yugoslavia	1988		Bad	Fence with wire	33KVA/ST
12	Beside Ewu junction, Iye-Ekiti	145893	500	Elprom	Bulgaria	2010		Good	Fence with gate	33KVA/ST

13	Opposite Palace, Iye-Ekiti	49344	500	Zennaro	Italy	2004		Good	Fence with gate	33KVA/LG
14	Inside the Palace Iye-Ekiti	1003000437	300	Elsewedy Electric	Nigeria	2010		Nil	Nil	ST, NOT YET INSTALL
15	Along Kwara State Rd, Ijeshamodu.							Good	Fence with gate.	33KVA/ST, Pole Mounted
16	Opposite Ijeshamodu Modern Market.	K140	500	Kotco	Nigeria	2004	2005	Good	Fence with gate.	33KVA/ST Captured with plague.
17	Along Ewu Road Iye-Ekiti.	1003000431	300	Elsewedy Electric	Nigeria	2004	2005	Good	Fence with gate.	33KVA/ST Captured with plague.
18	Beside Market Square	030064	200	Bi Bong	Korea	2003		Good	Fence with gate.	33KVA/ST.
19	Opp. St. Boniface Cath. N/P School	03-0059	200	Bi Bong	Korea	2003		Good	Fence with gate.	Not working.



**VALUATION AND RECOVERY OF  
EKITI STATE INVESTMENT IN  
POWER HOLDING COMPANY OF NIGERIA PLC**

**PHOTOGRAPHS OF TRANSFORMER SITES**

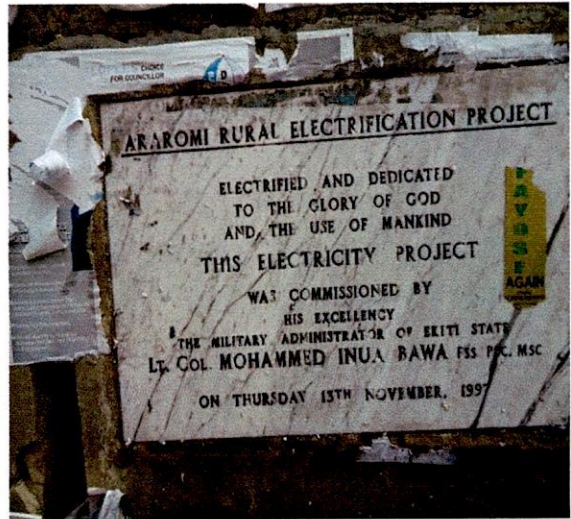
**Irepodun LGA**



## Transformer Photograph, Central Senatorial District Irepodun Local Government Area



Irepodun LG - 200KVA 33/0.415KV Emo-Ohrd Transformer, S.N. ETBK200.35 Opposite Palace Araromi, Araromi Ekiti



A Plaque at Araromi LG - 200KVA 33/0.415KV EMO-Ohrd Transformer, S.N. ETBK200.35 Opposite Palace, Araromi-Ekiti.



Irepodun LG-50KVA 33/0.415KV Minel Transformer, S.N. TP.7413.50 at Afin Junction, Irapora Ekiti



Irepodun LG-100KVA 33/0.415KV Transformer, S.N.... Opposite Eyemote Comprehensive High School, Araromi Ekiti



Irepodun LG-200KVA 33/0.415KV Transformer, S.N... at Ansaar-ud-deen Primary School, Araromi-Ekiti.



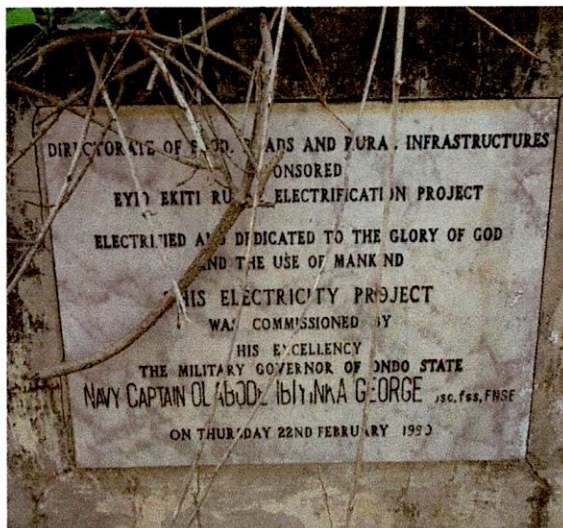
Irepodun LG-200KVA 33/0.415KV Elsewedy Transformer, S.N.1102000895 Ilawe Road Igede, Araromi Ekiti



Irepodun LG-200KVA 33/0.415KV Koncar Transformer, S.N. 543855 in front of Anglican Church, Araromi Ekiti



Irepodun LG-200KVA 33/0.415KV MINEL TRAF0 Transformer, S.N. 118312 at Esure Ekiti Ogbon Oba, Araromi-Ekiti.



A Plaque at Irepodun LG-200KVA 33/0.415KV MINEL TRAF0 Transformer, S.N. 118312 at Esure Ekiti Ogbon Oba, Araromi-Ekiti.



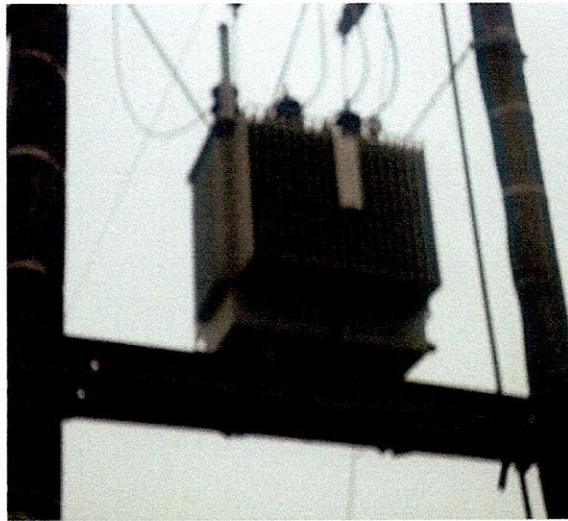
Irepodun LG-200KVA 33/0.415KV Minel Trafo Transformer, S.N.107550 at Eyio Ekiti Opposite C.A.C Oke Agbara, Araromi Ekiti



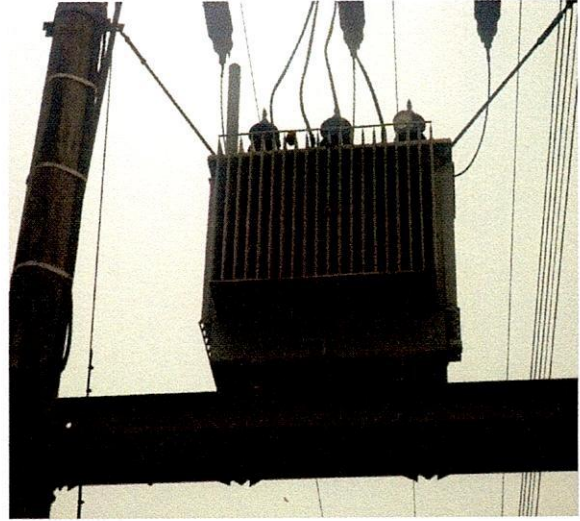
Irepodun LG-200KVA 33/0.415KV MINEL Transformer, S.N.118313 Opposite Are Community Health Center, Araromi-Ekiti.,



Irepodun LG-200KVA 33/0.415KV Mitsubishi Transformer, S.N.... Oke-Ilawe, Iyin Ekiti, Araromi Ekiti



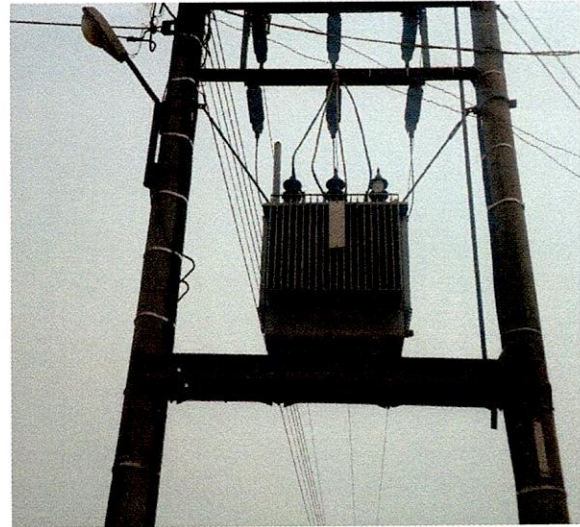
Irepodun LG-200KVA 33/0.415KV Transformer, S.N....Opposite United C & S Are, Araromi-Ekiti.



Irepodun LG-200KVA 33/0.415KV Transformer, S.N... at Igbemo Ilu Omoba Road, Araromi-Ekiti.



Irepodun LG-200KVA 33/0.415KV Transformer, S.N...at Oke Orun Junction, Igbemo, Araromi-Ekiti.



Irepodun LG-200KVA 33/0.415KV Transformer, S.N...Opposite C.A.C Oke-Iyanu, Afao, Araromi-Ekiti.



Irepodun LG-200KVA 33/0.415KV Zennaro Transformer, S.N..... Oluri Compound, Araromi Ekiti



Irepodun LG-200KVA 33/0.415KV, S.N..... Ijoka Street, Igede, Araromi -Ekiti



Irepodun LG-300KVA 33/0.415KV ABB ELEKTRIK Transformer, S.N.DT.40209.06 at Surulere Street, Opposite Living Faith, Iworoko, Araromi-Ekiti.



Irepodun LG-300KVA 33/0.415KV ABB Transformer, S.N..... Opposite Health Post, Ilawe Road, Araromi Ekiti





Irepodun LG-300KVA 33/0.415KV Elsewedy Transformer, S.N.0903000050 Odoleleyin Ilamoye Street, Araromi-Ekiti



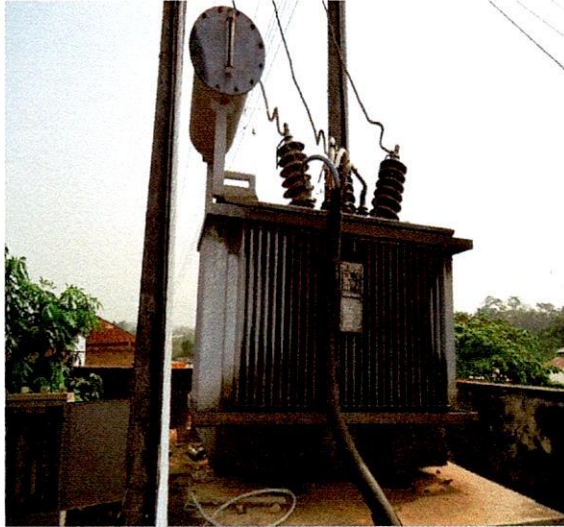
Irepodun LG-300KVA 33/0.415KV Emo-Ohrid Transformer, S.N.39450 at Roundabout, Afao, Araromi-Ekiti.



Irepodun LG-300KVA 33/0.415KV John holt Company Transformer, S.N., at Igedora Quarters, Araromi-Ekiti.



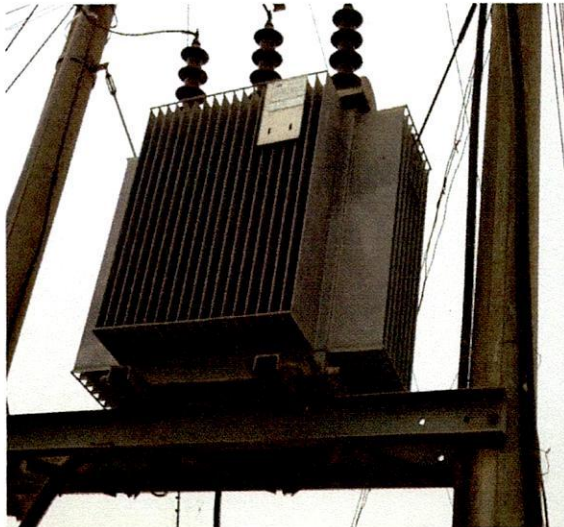
Irepodun LG-300KVA 33/0.415KV Marson's Transformer, S.N..., at St. Theresa's Junction, Araromi-Ekiti



Irepodun LG-300KVA 33/0.415KV Pauwels Transformer, S.N..., at C.A.C Oke Sale Street, Iyin, Araromi-Ekiti.



Irepodun LG-300KVA 33/0.415KV Elsewedy Transformer, S.N..., Opposite Baptist Primary School, Araromi Ekiti



Irepodun LG-300KVA 33/0.415KV Transformer, S.N..., at Roundabout, Opposite Mosque, Iworoko, Araromi-Ekiti.



Irepodun LG-500KVA 33/0.415KV Elvim Transformer, S.N.RV.2008.W.523.3048 Behind C.A.C Oke Iye Awo Road, Araromi Ekiti



Irepodun LG-500KVA 33/0.415KV EFACEC Transformer, S.N.16610-09 at Unity Estate, Iloro Street, Iworoko, Araromi-Ekiti.



Irepodun LG-500KVA 33/0.415KV, S.N., Marter Christi Road, Ararom-Ekiti

**Ekiti State Investment in PHCN Distribution Network  
Field Note Inspection**

Date of Inspection: 07/02/2012 - 09/02/2012

LGA: Irepodun LG

S/N	Location	Serial No	Rating (Kva)	Make /Model	Country of Man.	Date of Man.	Date of Comm.	Condition of Feeder Pillar	Construction Detail	Remarks
1	Opposite Palace Araromi Ekiti	ETBK200/33	200	EMO	Yugoslavia	1900	1997	Good	Fenced with blockwall and gate	33KV line/ ST
2	Afin Junction Iropora	TP/741/50	50	MINEL	Yugoslavia	1974		Bad	Fenced with blockwall and gate	33KV line/ ST
3	St. Theresa's Junction		300	Marson's	Indian	2003		Good	Fenced with blockwall and gate	33KV line/ ST
4	Infront Of Anglican Church	543855	200	Koncar	Croatia	1992	1996	Good	Fenced with blockwall and gate	33KV line/ ST
5	Oluri Compound		200	Zennaro	Italy	2002		Good	Low fence	11 KV line/
6	Marter Christi Road		500					Good	Fence with blockwall	11 KV line/
7	Ijoka Street Igede		200					Bad	No fence	EKSDA
8	Ilawe Road Igede	1102000895	200	Elsewedy	Nigeria	2011		Good	Fenced with blockwall	11 KV line/
9	Opposite Baptist Primary School		300	Refurbish				Good	Fenced with blockwall	33KV line/
10	Odoleleyin (Not Install) Ilamoye Street	0903000050	300	Elsewedy	Nigeria	2009				11 KV line / ST
11	Eyio Ekiti Opposite C.A.C Oke-Agbara	107550	200	MINEL	Novac	1988	1990	Good	Fenced with block/wire	33KV line/ ST
12	Esure Ekiti Ogbon Oba	118312	200	MINEL	Novac	1991	1995	Good	Fenced with block	33KV line/ ST

13	C.A.C Oke Sale Street Iyin Ekiti		300	Pauwels				Good	Fenced with wire	11 KV line/ ST
14	Oke Ilawe Iyin Ekiti		200	Mitsubishi				Good	Fenced with wire	11 KV line/ ST
15	Opposite Health Post Ilawe Road		300	ABB		2007		Good	No fence	11 KV line/ ST
16	Behind C.A.C Oke-Iye Awo Road	RV-2008-W-523-3048	500	Elvim	Germany	2008	2010	Good	Fenced with blockwall	11 KV line/ LG
17	Opposite Eyemote Comprehensive High Sch.		100					Good	Mounted with pole/ no fence	11 KV line/ ST
18	Igbemo Ilu Omoba Road		200					Good	Fenced with blockwall	33 KV line/ DEFRI
19	Ansaar-Ud-Deen Primary Sch		200					Good	Pole mounted/ No fence	33 KV line/ ST
20	Oke Orun Junction Igbemo		200					Bad	Fenced with blockwall	33 KV line/ DEFRI
21	Opposite C.A.C Oke-Iyanu Afao Ekiti		200					Bad	Mounted with pole/No fence	33 KV line/ DEFRI
22	Roundabout Afao	39450	300	EMO-OHRID	Macedonia	2001		Good	Fenced with blockwall	33 KV line/ DEFRI
23	Opposite United C&S Are		200					Good	Fenced with blockwall	33 KV line/ DEFRI
24	Opposite Are Community Health Center	118313	200	Minel Trafo	Yugoslavia	1983		Good	No fence	33 KV line/ DEFRI
25	Surulere Str Opposite Living Faith Iwaroko Ekiti	DT/40209/06	300	ABB Elektrik	Turkey	2006		Good	Fenced with blockwall	33 KV line/ DEFRI
26	Roundabout Opposite Mosque Iworoko Ekiti		300	ABB				Good	Mounted with pole/ no fence	33 KV line/ DEFRI
27	Unity Estate Iloro Str Iwokoro Ekiti	16610.09	500	Efacec	Portugal	2002		Good	Fenced with blockwall	33 KV line/ DEFRI
28	Igedora Quarters		300	John Holt	U.K	2006		Good	Fenced with blockwall and gate	33 KV line/ LG



**VALUATION AND RECOVERY OF  
EKITI STATE INVESTMENT IN  
POWER HOLDING COMPANY OF NIGERIA PLC**

**PHOTOGRAPHS OF TRANSFORMER SITES**

**Ise Orun LGA**



## Transformer Photograph, South Senatorial District Ise-Orun Local Government Area



Ise-Orun LG-200KVA 11/0.415KV Trafo Union Transformer, S.N.21820539. at Ise-Orun LG Secretariat, Ekiti



Ise-Orun LG-200KVA 33/0.415KV ABB Transformer, S.N.1LPL465765 at Aba Ede, Ise-Orun.



Ise-Orun LG-200KVA 33/0.415KV Emo-Ohrid Transformer, S.N.88420 at Egbese, Ise-Orun



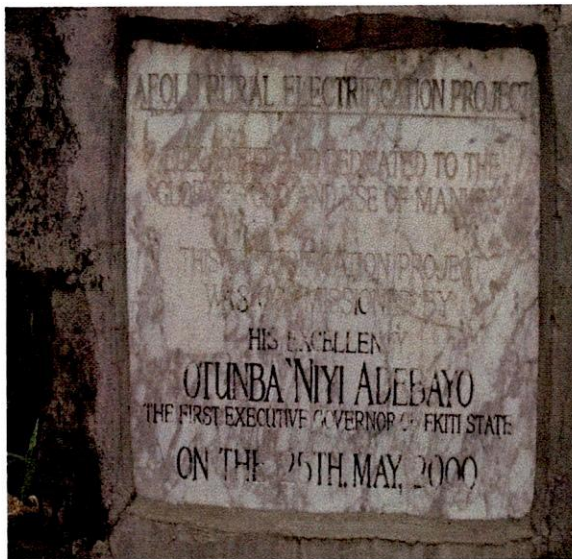
Ise-Orun LG-200KVA 33/0.415KV Emo-Ohrid Transformer, S.N.338490. Beside Kingdom Hall Obada, Ekiti



Ise-Orun LG-200KVA 33/0.415KV A Plague for Emo-Ohrid Transformer, S.N.338490. Beside Kingdom Hall Obada, Ekiti



Ise-Orun LG-200KVA 33/0.415KV Emo-Ohrid Transformer, S.N.339201. Beside GOFAMINT Afolu, Ekiti



Ise-Orun LG-A plague for 200KVA 33/0.415KV Emo-Ohrid Transformer, S.N.339201. Beside GOFAMINT Afolu, Ekiti



Ise-Orun LG-300KVA 11/0.415KV Elprom Trafo Transformer, S.N.141431 at Oge Street, Ise-Ekiti

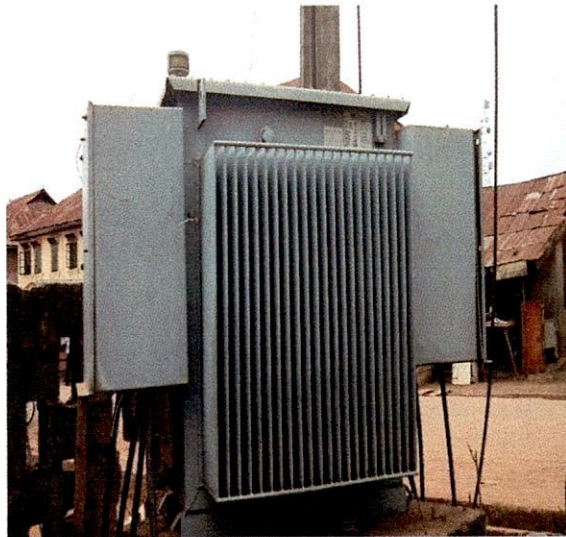




Ise-Orun LG-300KVA 11/0.415KV ABB Transformer, S.N.1LPL433057. Beside St. Paul School Ajegunle-Ekiti



Ise-Orun LG-300KVA 11/0.415KV ABB Transformer, S.N.1LPL433060. In front of CAC Ajegunle-Ekiti



Ise-Orun LG-300KVA 11/0.415KV ABB Transformer, S.N.2047660101 at Oke Odi Street Ise-Ekiti



Ise-Orun LG-300KVA 11/0.415KV BREDA Transformer, S.N.1863805. Beside Post Office, Orin Ekiti, Ekiti



Ise-Orun LG-300KVA 11/0.415KV Elsewedy Transformer, S.N.1003000510 at the General Hospital, Ise-Ekiti



Ise-Orun LG-300KVA 11/0.415KV John Holt Transformer, S.N.500500 at St. Paul Anglican Church Oraye, Ekiti



Ise-Orun LG-300KVA 11/0.415KV Siemens Transformer, S.N.C158484 at Kajola, Temidire, Ekiti



Ise-Orun LG-300KVA 33/0.415KV Elsewedy Transformer, S.N.1003000505. Olowuro Palace, Orun-Ekiti



Ise-Orun LG-300KVA 33/0.415KV Mitsubishi Transformer, S.N.L31691006 at St. Stephen Anglican School, Erinwa, Ekiti



Ise-Orun LG-500KVA 11/0.415KV BRUSH Transformer, S.N... at Ojude Street, Orun Ekiti



Ise-Orun LG-500KVA 11/0.415KV BRUSH Transformer, S.N.26520004. Opposite Omo-Oni Bus Stop, Orun-Ekiti



Ise-Orun LG-500KVA 11/0.415KV Elsewedy Transformer, S.N.1005000455 along Ise-Orun LG Secretariat Road, Ekiti

**Ekiti State Investment in PHCN Distribution Network  
Field Note Inspection**

**Senatorial District: EKITI SOUTH**

**LGA: ISE/ORUN**

**Date of Inspection: 21 -02-2012**

S/N	Location	Serial No	Rating (Kva)	Make /Model	Country of Man.	Date of Man.	Date of Comm .	Condition of Feeder Pillar	Construction Detail	Remarks
1	Kajola Temidire Rural Electrification	C158484	300	Siemens	Germany	2005	2006	Good	Fence with gate	11 KV line / ST
2	St Paul Anglican Church Oraye	500500	300	John Holt	Liverpool	2007	2010	Good	Fence without gate	11 KV line / ST
3	St Philips Anglican Sch. Erinwa	L31691006	300	Mitsubishi	Japan	1986		Bad	Fence without gate	33 KV line / ST
4	Along Ise-Orun L.G Secretariat	21820539	200	Trafo Union	England	1986		Bad	Fence with gate	11 KV line / ST
5		1005000455	500	Elsewedy	Nigeria	2010				11 KV line / ST
6	Beside Government (Afolu)	339201	200	Emo-Ohrid	Macedonia	1998	2000	Good	Fence with gate	33 KV line / ST
7	Beside kingdom Hall (Obada)	338490	200	Emo-Ohrid	Macedonia	1998	2000	Good	Fence with gate	33 KV line / ST
8	Opposite Omo Oni Bus Stop Orun	26520004	500	Brush	England	1997		Good	Fence with gate	11 KV line / LG
9	Beside Post Office, Orun-Ekiti	1863805	300	Breda		1983		Good	Fence with wire	11 KV line / ST
10	Ojude street Orun -Ekiti		500	Brush	England		1997	Good	Fence with no gate	11 KV line / ST

11	Oge street Ise- Ekiti	141431	300	Elprom Trafo	Bulgaria	2010		Good	Fence with no gate	11 KV line / ST
12	Olowuro Palace orun – Ekiti	1003000505	300	Elsewedy	Nigeria	2010			Not yet Install	11 KV line / ST
13	Oke Odi Street , Ise Ekiti	20476001/01	300	ABB	South Africa	2002		Good	Dilapidated fence	11 KV line / ST
14	General Hospital, Ise- Ekiti	1003000510	300	Elsewedy	Nigeria	2010			Fence with wire	11 KV line / ST
15	Infront of CAC Ajegunle Ekiti	1LPL433060	300	ABB		2009		Good	Fence with gate	11 KV line / ST
16	Beside st paul school	1LPL433057	300	ABB		2009		Good	Fence with gate	11 KV line / ST
17	Aba- EdeElectrification	1LPL465765	200	ABB		2011	2011	Good	Fence with gate	11 KV line / ST
18	Egbese Rural Electrification	88420	200	Emo-Ohrid	Macedonia	1997		Good	Fence with gate	33 KV line / ST



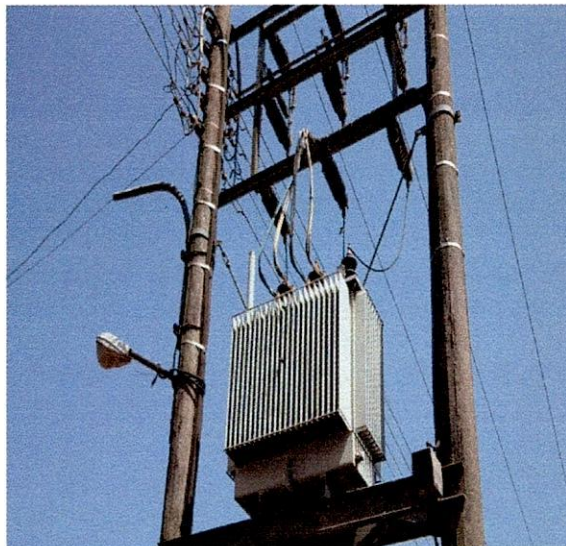
**VALUATION AND RECOVERY OF  
EKITI STATE INVESTMENT IN  
POWER HOLDING COMPANY OF NIGERIA PLC**

**PHOTOGRAPHS OF TRANSFORMER SITES**

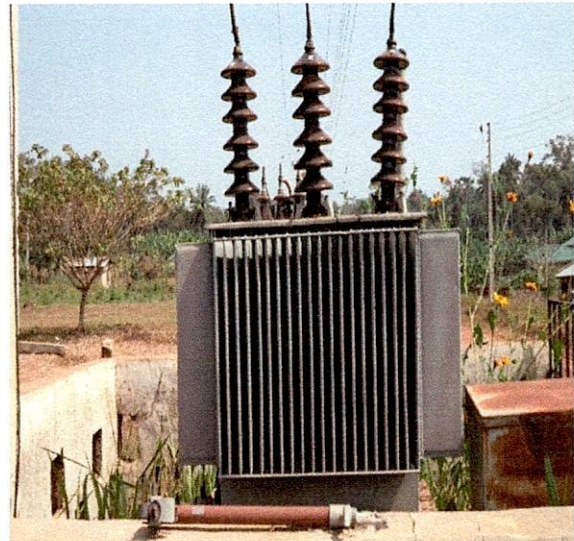
**Moba LGA**



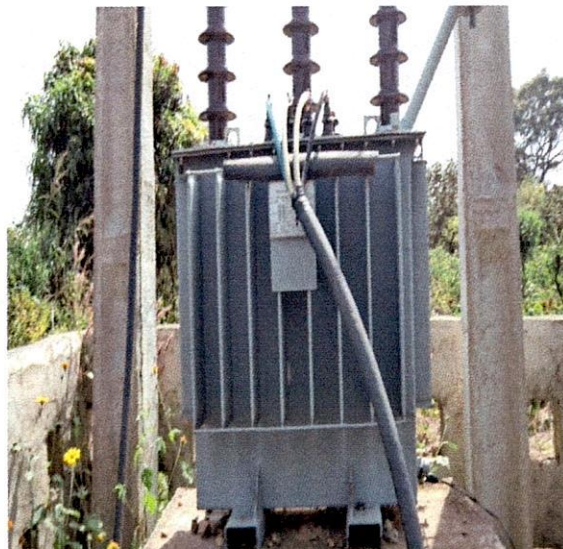
## Transformer Photograph, North Senatorial District Moba Local Government Area



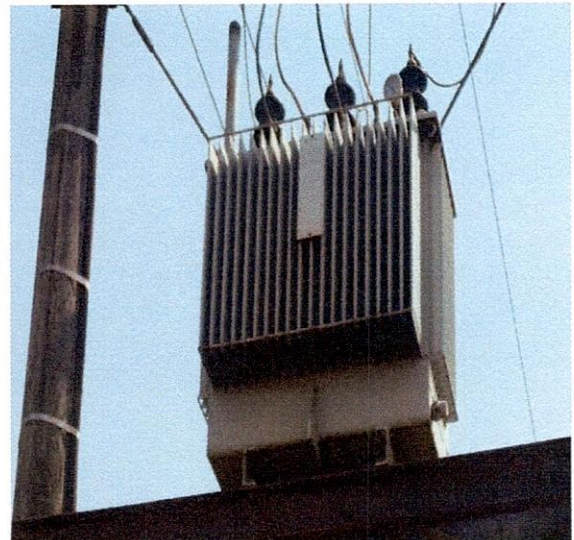
Along St. Augustine Catholic Road,. Odo Ilero,  
Osun Ekiti



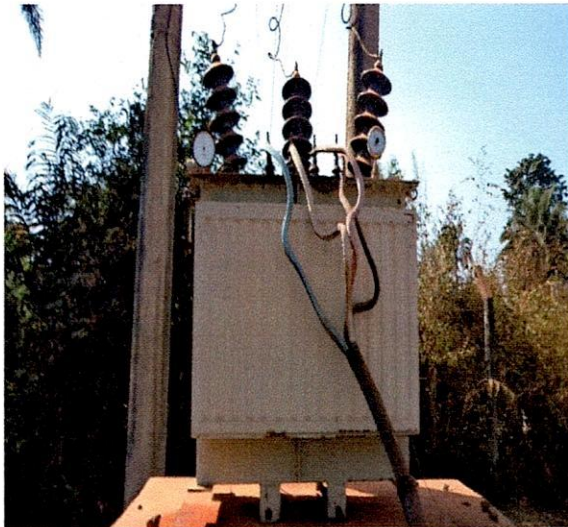
Moba LG-100KVA 33/0.415KV ABB Transformer,  
S.N. DT4105006 In front of Onirare Palace. Irare  
Ekiti.



Moba LG-100KVA 33/0.415KV ABB Transformer,  
S.N. LPL411006 at Gaa Irare-Ekiti village.



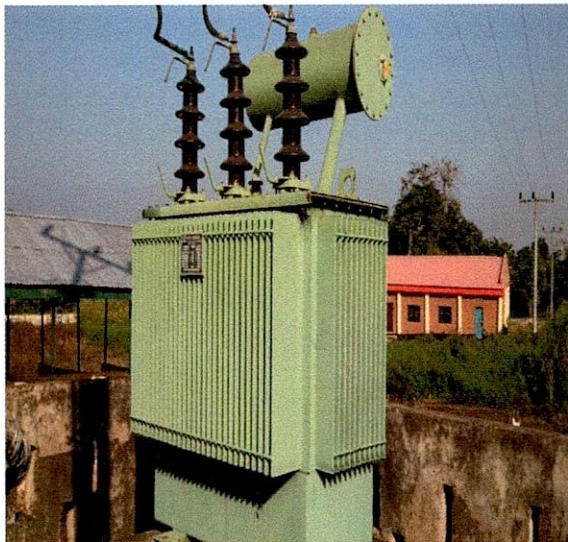
Moba LG-100KVA 33/0.415KV Trafo Union  
Transformer, S.N....at L. A Primary School, Ikosun-  
Ekiti



Moba LG-200KVA 33/0.415KV at Water Corporation, Iro Ekiti.



Moba LG-200KVA 33/0.415KV Elettromeccanica Transformer, S.N. 18041 at Customary Court Junction, Erinmope-Ekiti.

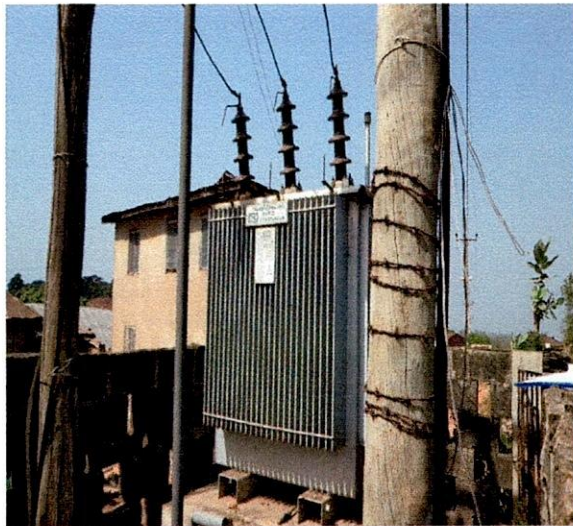


Moba LG-200KVA 33/0.415KV Emo-Ohrid Transformer, S.N. 539928 Beside St James Church, Ira-Ekiti.

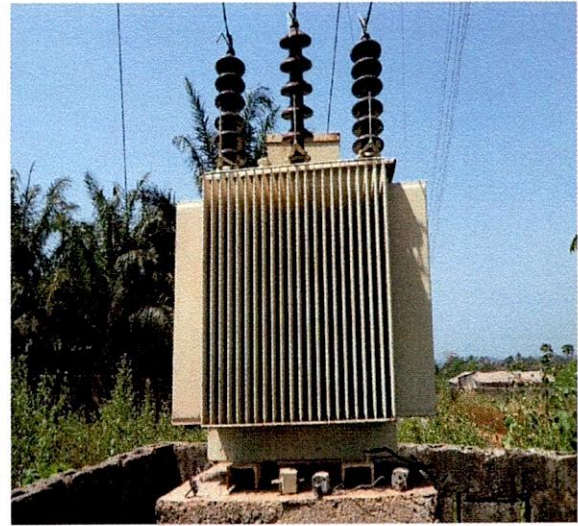


Moba LG-200KVA 33/0.415KV Koncar Transformer, S.N.6TBN200388 at Good Shepherd Catholic Church, Igogo-Ekiti

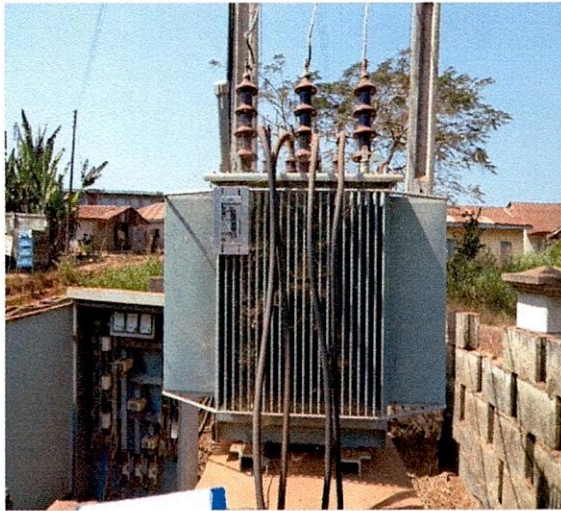




Moba LG-200KVA 33/0.415KV Emo-Ohrd Transformer, S.N. 37564 at Aye Oja Ekiti.



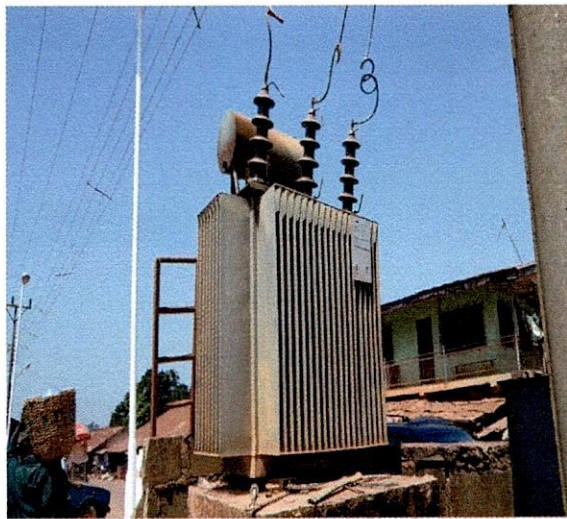
Moba LG-200KVA 33/0.415KV Pauwels Transformer, S.N. 91N2609 at NSCDC, Otun Ekiti.



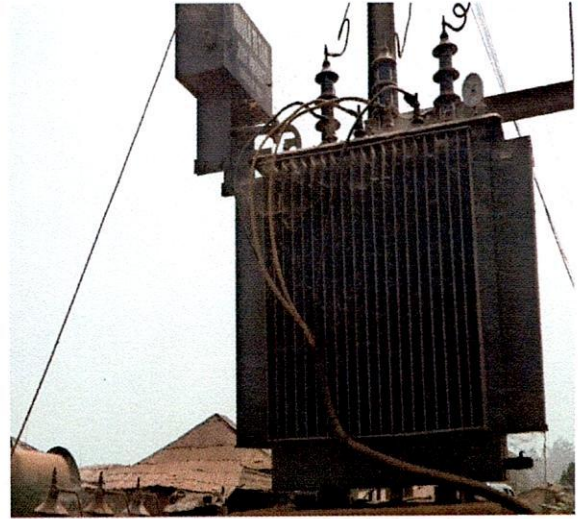
Moba LG-300KVA 33/0.415KV ABB Transformer, S.N. 1LPL345748 at Opposite Primary Health Center, Osan-Ekiti.



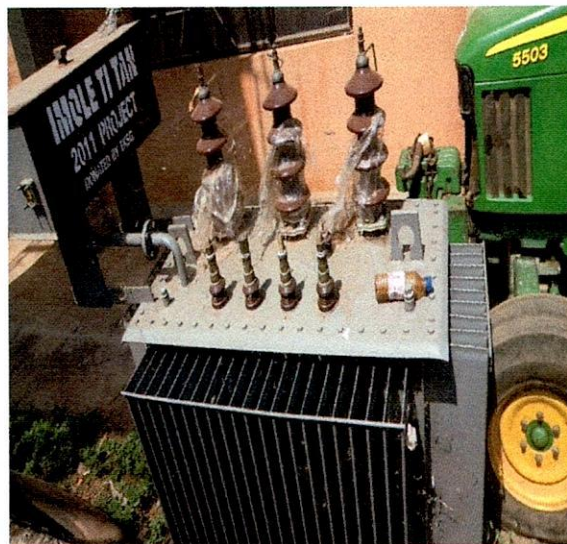
Moba LG-300KVA 33/0.415KV ABB Transformer, S.N. 1LPL463632 at The Apostolic Faith Church, Oke Owa Street, Igogo-Ekiti.



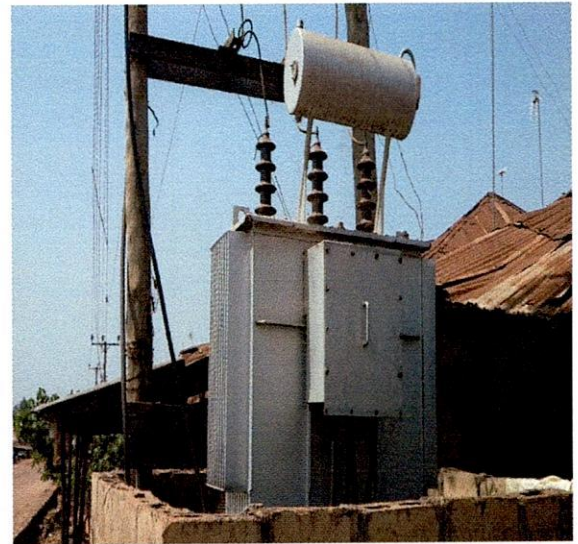
Moba LG-300KVA 33/0.415KV ABB Transformer, S.N.... at Total Filling Station, Otun Ekiti.



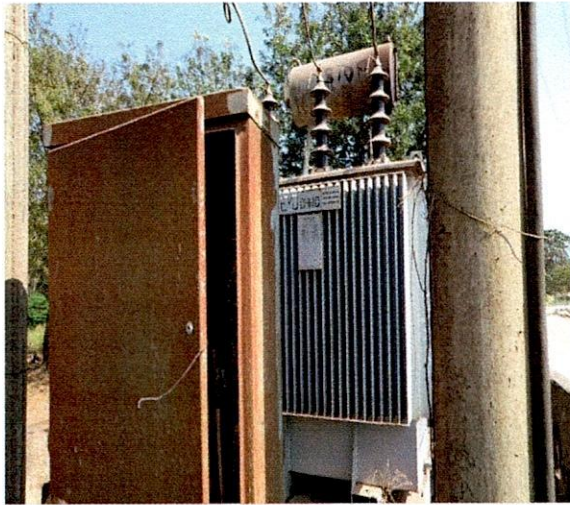
Moba LG-300KVA 33/0.415KV Elsewedy Transformer, S.N.1003000408 at Winner Chapel Junction, Igogo-Ekiti



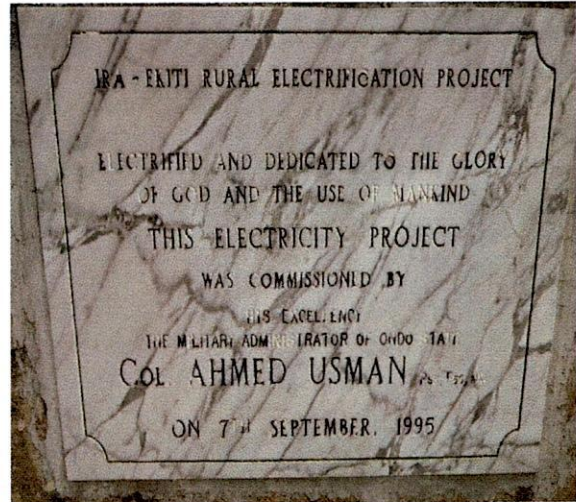
Moba LG-300KVA 33/0.415KV Elsewedy Transformer, S.N. 1003000341 at Oore's Palace, Otun-Ekiti.



MobaLG-300KVA 33-0.415KV Emo Ohrid Transformer, S.N. 30358 at Ekooru junction IKun Ekiti.



Moba LG-300KVA 33/0.415KV Emo-Ohrid Transformer, S.N. 34976 In front of St James Church, Ira-Ekiti.



In front of St. James Church, Ira Ekiti



Moba LG-300KVA 33/0.415KV Enerco Transformer, S.N. 142244 In front of Justice Babalola, Omu Aran Road, Ekiti.



Moba LG-300KVA 33/0.415KV Pauwels Transformer, S.N. 99N-1824 Beside St. John, Iloye Street, Erinmope-Ekiti.



Moba LG-300KVA 33/0.415KV Pauwels Transformer, S.N.... Imuje Street, Otun-Ekiti.



Moba LG-500KVA 33/0.415KV ABB Transformer, S.N. 1LPL407763 at Fountain Dairy, Ikun Ekiti.



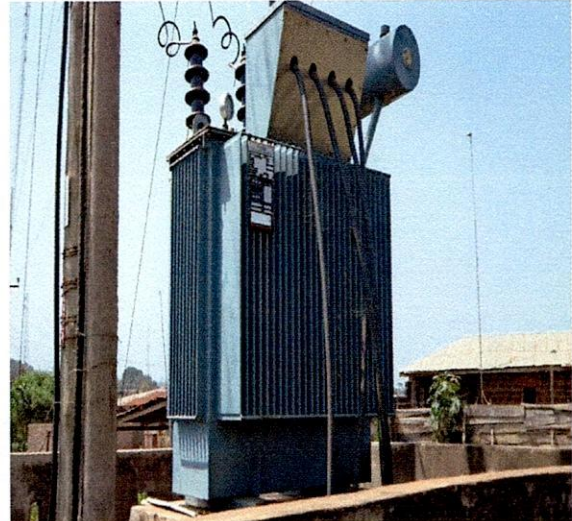
Moba LG-500KVA 33/0.415KV Else-wedy Transformer, S.N. 1003000338 at Kabiyesi Palace, Osan Ekiti.



Moba LG-500KVA 33/0.415KV Emo-Ohrid Transformer, S.N.34845 Beside Adebisi Filling Station, Otun Ekiti.



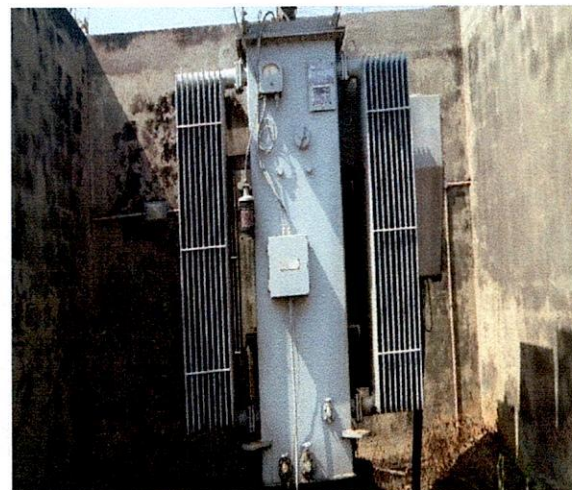
Moba LG-500KVA 33/0.415KV JSC  
Ukrelectroapparat Transformer, S.N. 435757  
Beside Co-operative Hall, Odo-Oja, Otun-Ekiti.



Moba LG-500KVA 33/0.415KV Mace Transformer,  
S.N. 49352 In front of CAC Oke Isegun, Inisa Ekiti.



Moba LG-500KVA 33/0.415KV Mace Transformer,  
S.N. 49353 In front of Police Post, Osun Ekiti.



Moba LG-630KVA 33-0.415KV GEC Transformer,  
S.N.813401 Ekiti State Water Corporation III, Ero  
Dam, Ikun-Ekiti



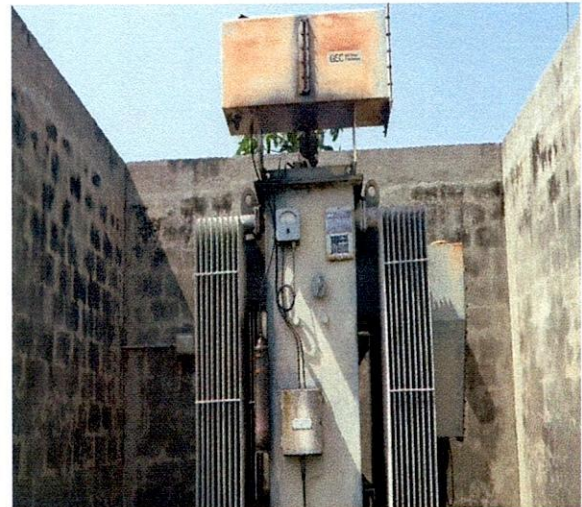
Moba LG-630KVA 33/0.415KV GEC Transformer, S.N.813681 Ekiti State Water Corporation I, Ero Dam, Ikun-Ekiti.



Moba LG-630KVA 33/0.415KV GEC Transformer, S.N.813681 Ekiti State Water Corporation II, Ero Dam, Ikun-Ekiti.



Moba LG-2500KVA 33/0.415KV AREVA Transformer, S.N.39049556 Ekiti State, Water Corporation V, Ero Dam, Ikun-Ekiti



Moba LG-2500KVA 33/0.415KV GEC Transformer, S.N.813381 Ekiti State, Water Corporation IV, Ero Dam, Ikun-Ekiti

**Ekiti State Investment in PHCN Distribution Network  
Field Note Inspection**

**Date of Inspection:** 29/11/2011 - 12/12/2011

**LGA:** Moba LG

S/N	Location	Serial No	Rating (Kva)	Make /Model	Country of Origin	Date of Man	Date of Comm.	Condition of Feeder Pillar	Construction Detail	Remarks
1	Infront of Police Post, Osan Ekiti	49353	500	Mace	Italy	2004		Good	Fence with no gate	33KVA/ST
2	Opposite Pry Health Center Osan Ekiti	1LPL345748	300	ABB		2005		Good	Low fence with gate	33KVA/ST
3	Kabiyesi Palace	1003000338	300	Elsewedy	Nigeria	2010		No feeder pillar	No fence	33KVA/ST
4	Water Corporation Iro-Ekiti		200			1985		No	No	33KVA/ST Bad, Not working
5	Infront of St. James' Church, Iro-Ekiti	34976	300	Em-Ohrid	Macedonia	1998		Good	Fence with no gate	33KVA/ST
6	Beside St James Church, Ira-Ekiti.	539928	200	Rade Koncar	Yugoslavia	1990	1995	No Feeder Pillar	Fence with Gate	33KVA/ST
7	Infront of CAC Oke Isegun Inisa	49352	500	Mace	Italy	2004		Good	Fence with Gate	33KVA/ST
8	Beside Adebiyi Filling Station, Otun-Ekiti	34845	500	Em-Ohrid	Macedonia	2004		Good	Bad Fence	33KVA/ST
9	Infront of Justice Babalola house, Omu Aran Rd.	14224/4	300	Enerco		2005		Good	Fence with no gate	33KVA/ST
10	Apostolic Faith Church Oke Owa St. Igogo Ekiti	1LPL463632	300	ABB		2011		Good	Fence with Gate	33KVA/ST
11	Along St. Augustine Cath. Church Rd. Odo Ilero, Osun	No Plate	No Plate	No Plate				Good	Fence with Gate	33KVA/ST
12	Infront of NSCDC, Otun Ekiti	91N2609	200	Pauwels		1999		Burnt but working	Fence with no gate	33KVA/ST
13	At Total filling Station, Otun Ekiti		300	ABB				Burnt but working	No fence	33KVA/ST
14	Beside St. John Iloye St., Erinmope	99N-1824	300	Pauwels		2000		Good	Fence with wire	33KVA/ST



15	Customary Court Junction, Erinmope Ekiti	18041	200	Elettromecanic	Italy	2001		Good	Wire fence	33KVA/ST
16	Gaa Irare Ekiti Village	LPL-4110-06	100	ABB	Turkey	2006		Good	Fence with gate(low)	33KVA/ST
17	Infront of Onirare Palace Irare Ekiti	DT41050-06	100	ABB	Turkey	2006		Good	Fence with gate	33KVA/ST
18	Aye-Oja Ekiti	37564	200	Emo-Ohrid	Yugoslavia	1991		Good	Fence with gate	33KVA/ST
19	OOre's palace Otun Ekiti	1003000341	300	Elsewedy Electric	Nigeria	2010		No feeder pillar	No fence	33KVA/ST
20	Beside Co-op. Hall Odo-Oja, Otun Ekiti	435757	500	JSC Ukrelectro	Ukraine	2009		Good	Fence with gate	33KVA/ST
21	Imuje Street, Otun Ekiti		300	Pauwels		2000		Good	Fence with gate	33KVA/ST
22	Fountain Dairy, Ikun	1LPL407763	500	ABB		2008		Good	Fence with gate	33KVA/ST
23	Ekooru Junction, Ikun Ekiti	303558	300	Emo-Ohrid	Macedonia	2008		Good	Fence with no gate	33KVA/ST
24	Ekiti State Water Coop. Ero Dam, Ikun Ekiti I	81368/1	630	GEC	England	1982		No feeder pillar	Wall fence with no gate	33KVA/ST
25	Ekiti State Water Coop. Ero Dam, Ikun Ekiti II	813440/1	630	GEC	England	1982		No feeder pillar	Wall fence with no gate	33KVA/ST
26	Ekiti State Water coop. Ero Dam, Ikun Ekiti III	81338/2	2500	GEC	England	1982		No feeder pillar	Wall fence with no gate	33KVA/ST
27	Ekiti State Water coop. Ero Dam, Ikun Ekiti IV	81338/1	2500	GEC	England	1982		No feeder pillar	Wall fence with no gate	33KVA/ST
28	Ekiti State Water coop. Ero Dam, Ikun Ekiti V			AREVA		2007		No feeder pillar	No fence	33KVA/ST
29	L.A Pry school, Ikosun Ekiti		100	Trafo Union				Good	Fence with gate.	Suspended btw two poles/ 33KVA/ ST
30	Winner Chapel Junction, Igogo Ekiti	100300408	300	Elsewedy Electric	Nigeria	2010		Good	No fence	33KVA/ST
31	Good Shepherd Cath. Church, Igogo Ekiti	6TBN200-38/8	200	Konkar	Crotia	1992		Good	Dilapidated fence	33KVA/ST



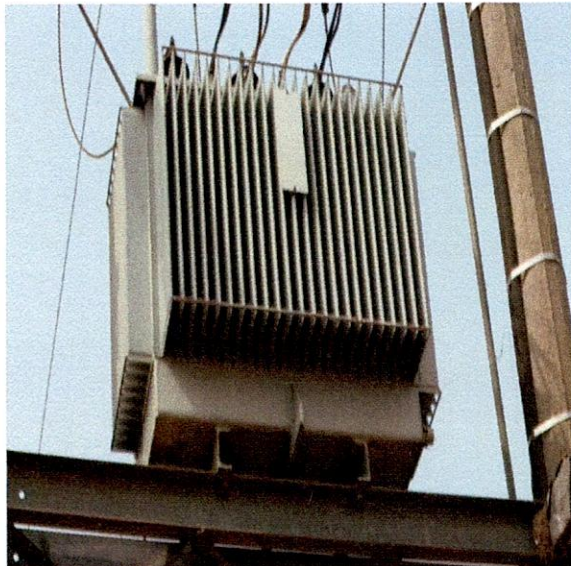
**VALUATION AND RECOVERY OF  
EKITI STATE INVESTMENT IN  
POWER HOLDING COMPANY OF NIGERIA PLC**

**PHOTOGRAPHS OF TRANSFORMER SITES**

**Oye LGA**



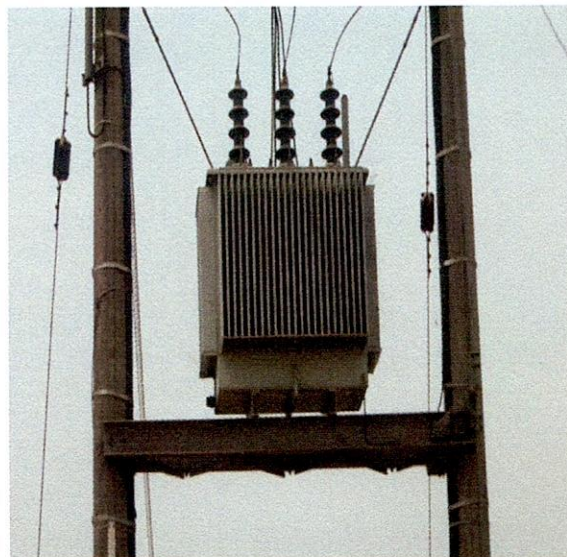
## Transformer Photograph, North Senatorial District Oye Local Government Area



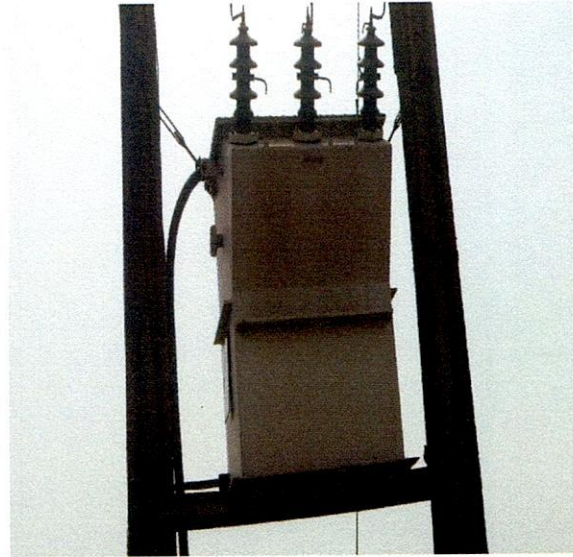
Oye LG ...33/0.415KV Simens Transformer S.N...,  
Adjcent to St. Mary Catholic Church, Osin Ekiti.



Oye LG ...KVA 33/0.415KV Simens Transformer  
S.N., In front of Onirare Palace



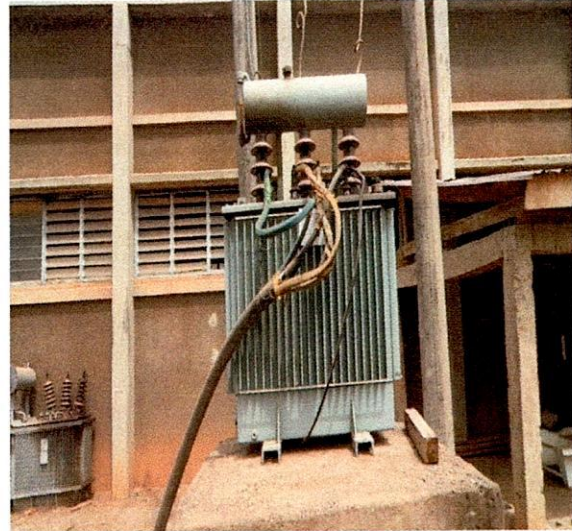
Oye LG- ..KVA 33/0.415KV Siemens Transformer  
S.N. .., In front of Ayegbaju Palace



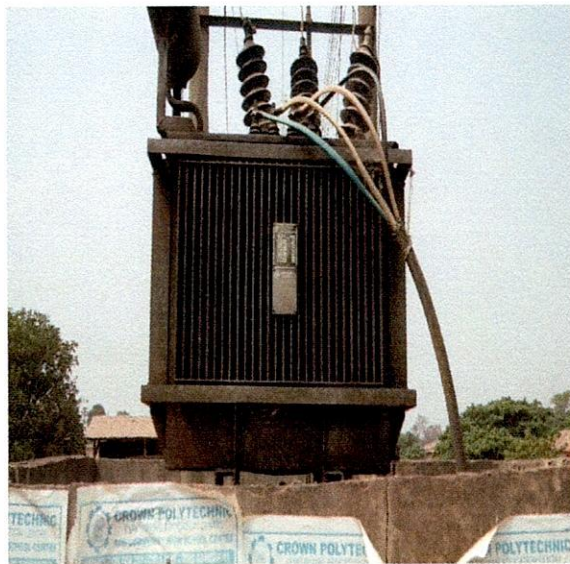
Oye LG-.. KVA 33/0.415KV Elsewedy Electric  
Transformer S.N., At Ire- Igbimo Road, Ire.



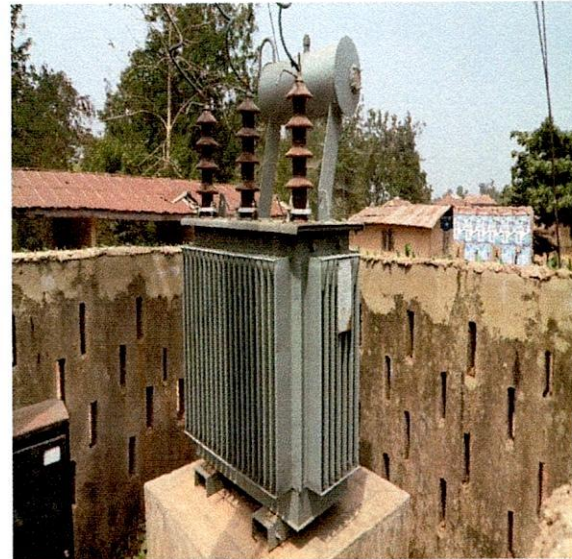
Oye LG- 100KVA 33/0.415KV Emo-Ohrid Transformer S.N. 33707 at Water Booster Station, Ilupeju.



Oye LG- 200KVA 33/0.415KV ABB Transformer S.N. 58523 at Water Booster Station, Isan Ekiti.



Oye LG- 200KVA 33/0.415KV Minel Transformer S.N. TD8330200 Besides CAC Oke Alafia, Itaji.



Oye LG 200KVA 33/0.415KV NUCON Transformer S.N. 01258 at Omu Odo Market, Omu Odo



Oye LG- 300KVA 33/0.415KV Transformer S.N., at Ogunlade Sawmill, Oye



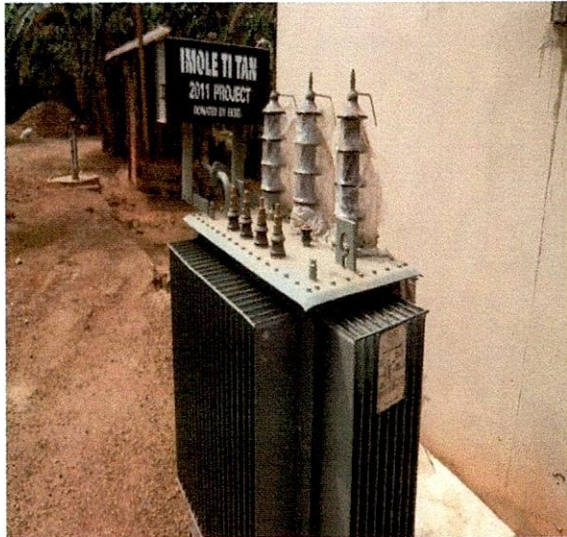
Oye LG- 300KVA 33/0.415KV ABB Transformer S.N. 1LPL359951 Imojo Rural Electrification, Imojo Ekiti.



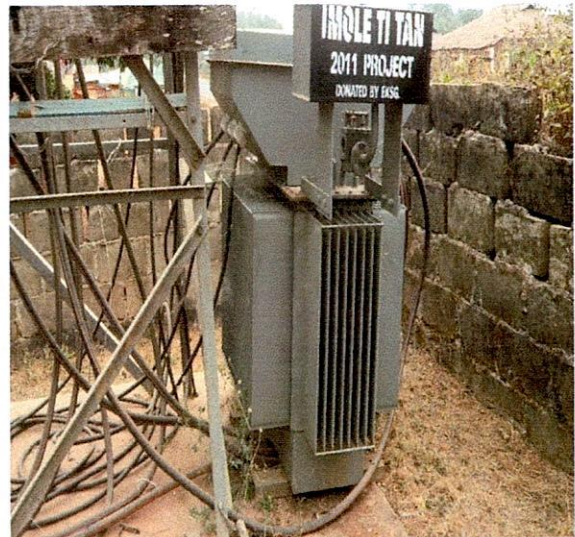
Oye LG- 300KVA 33/0.415KV ABB Transformer S.N. 364014 at Irare Estate.



Oye LG- 300KVA 33/0.415KV Elsewedy Electric Transformer S.N. 1003000424 Opposite Oke Alafia Junction, Ayede Ekiti.



Oye LG- 300KVA 33/0.415KV Elsewedy Electric Transformer S.N. 1003000426 at Aafin Al'olu, Ilafon



Oye LG- 300KVA 33/0.415KV Elsewedy Electric Transformer S.N. 1003000426 In front of Oloye of Oye Ekiti Palace



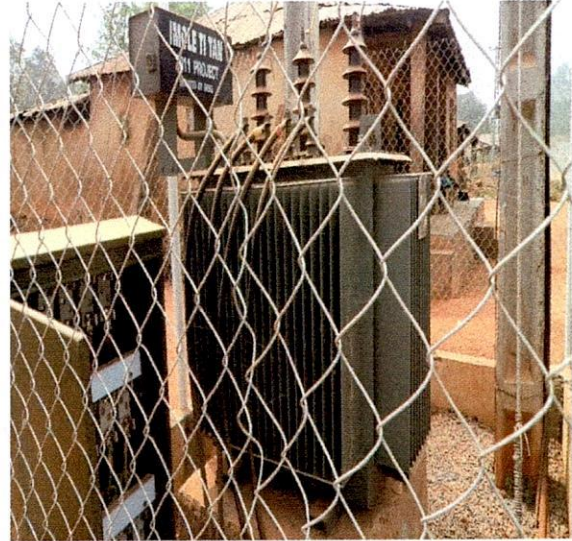
Oye LG- 300KVA 33/0.415KV Elsewedy Electric Transformer S.N. 1003000427 at Apeju Palace, Ilupeju.



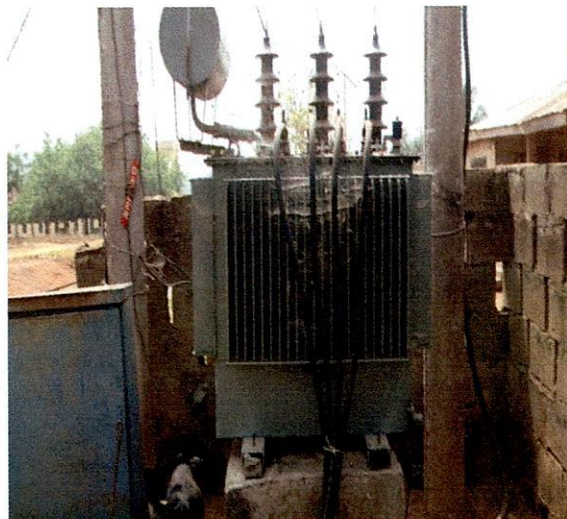
Oye LG- 300KVA 33/0.415KV Elsewedy Electric Transformer S.N. 1003000430 at Onire Palace, Ire Ekiti



Oye LG- 300KVA 33/0.415KV Elsewedy Electric Transformer S.N. 1003000434 Opposite Ayede Grammar School, Ayede.



Oye LG- 300KVA 33/0.415KV Elsewedy Electric Transformer S.N. 1003000594 at Ilemoso



Oye LG- 300KVA 33/0.415KV Elsewedy Electric Transformer S.N. 1003000594 Opposite Omu Kingdom, Omu Oke.



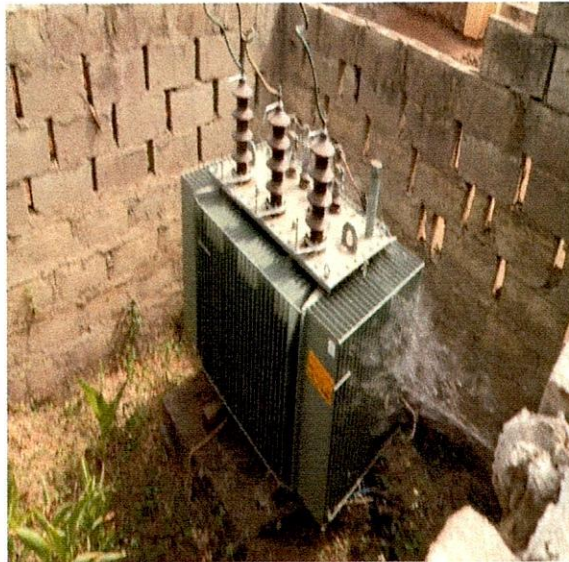
Oye LG- 300KVA 33/0.415KV Elsewedy Electric Transformer S.N. 1003000800 Opposite St. Paul Anglican Church, Ijelu Ekiti.



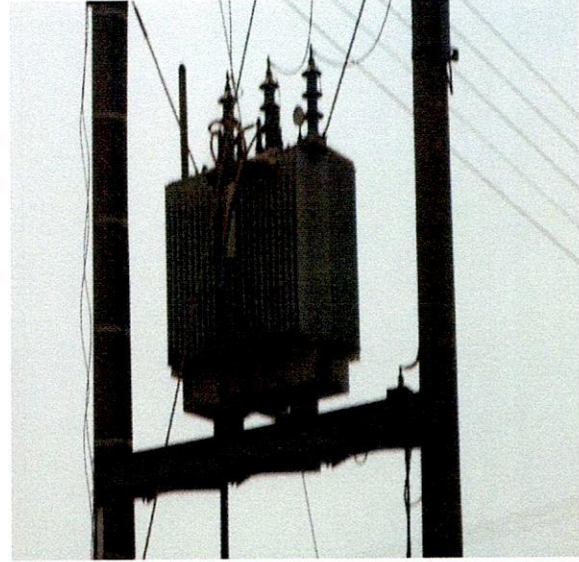
Oye LG- 300KVA 33/0.415KV Kotson Transformer S.N. 99878 Opposite Jagun Ajakaye, Isan Ekiti.



Oye LG- 300KVA 33/0.415KV Siemens Transformer S.N. 833193 along Ogere Industrial Estate, Ayede

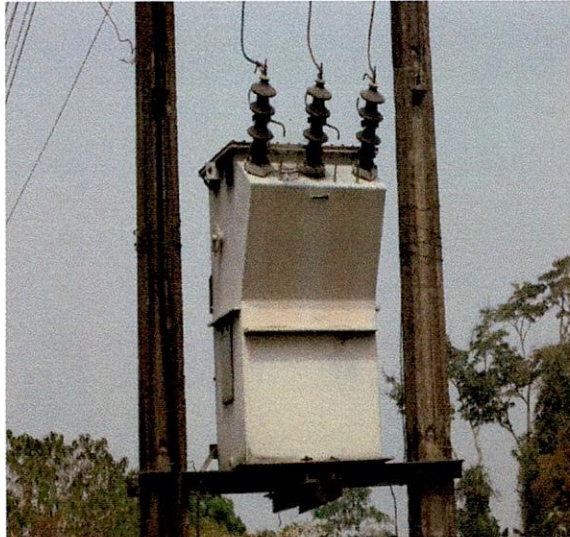


Oye LG- 500KVA 33/0.415KV ABB Transformer S.N. 423734 Opposite. St. Philomena Catholic Primary School, Itapa Ekiti

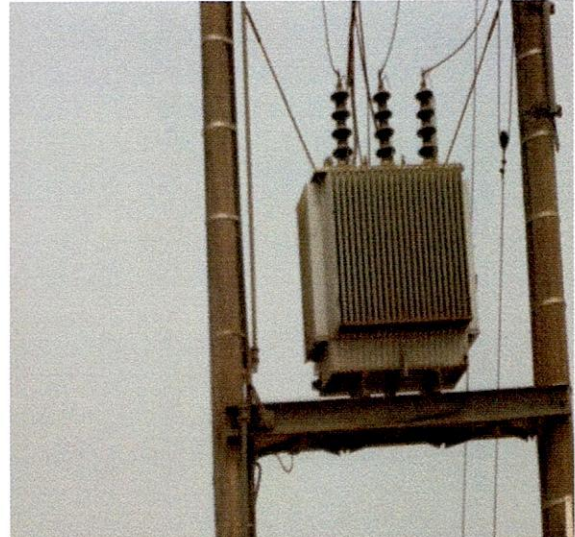


Oye LG- Siemens Transformer 33/0.415 In front of Bamiyo Villa, Ilupeju Ekiti.

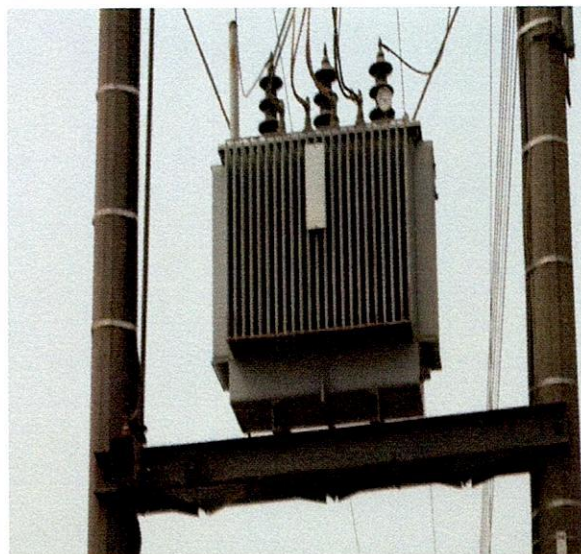




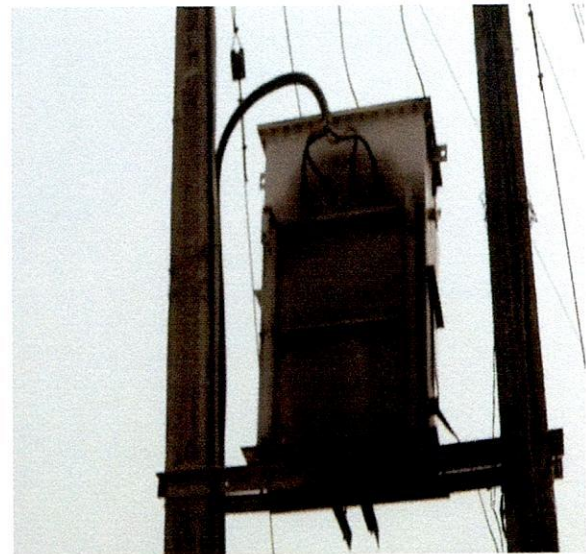
Oye LG- Siemens Transformer 33/0.415KV along the Road, Ire Ekiti.



Oye LG- Siemens Transformer 33/0.415KV Along Esinkun Road, Ilupeju Ekiti.



Oye LG- Siemens Transformer 33/0.415KV at Awo Street, Ilupeju Ekiti.



Oye LG- Siemens Transformer 33/0.415KV Besides St. John's Anglican Church, Ire.



Oye LG- Siemens Transformer 33/0.415KV In front of St. John's Anglican Church, Ilupeju.



Oye LG- Siemens Transformer S.N. 33-0.415KV at Ijelu Road, Itapa-Ekiti.

**Ekiti State Investment in PHCN Distribution Network  
Field Note Inspection**

Date of Inspection: 06/01/2012

LGA: Oye-Ekiti

S/N	Location	Serial No	Rating (Kva)	Make /Model	Country of Man.	Date of Man.	Date of Comm.	Condition of Feeder Pillar	Construction Detail	Remarks
1	Adjcent St. Mary Cath. Church Osin-Ekiti			Siemens				Good	Pole Mounted	33KVA/ ST
2	Opp. St Philomena Cath. Pry Sch. Itapa.	423734	500	ABB		2009		Good	Fence with gate	33KVA/ST
3	Omu Odo Market Sqr, Omu Odo	01258	200	Nucon	India	2007		Good	Fence with gate	33KVA/ ST
4	Opp Omu Kingdom, Omu Oke	58068	300	ABB	Boveri	2006		Good	Dilapidated Fence	33KVA/ST
5	Opp. St Paul's Ang. Church, Ijelu	1003000800	300	Else wedy	Nigeria	2010	2011	Good	Fence with gate	33KVA/ST
6	Ijelu Road, Itapa-Ekiti			Siemens				Good	Pole mounted	33KVA/ST
7	Infront Of Bamiyo Villa Ilupeju.			Siemens				Good	Pole mounted	33KVA/ST
8	Ewo Street Ilupeju Ekiti			Siemens				Good	Pole mounted	33KVA/ST
9	Along Esinkun Rd. Ilupeju Ekiti			Siemens				Burnt	Pole mounted	33KVA/ST
10	Infront of St. John Ilupeju			Siemens				Burnt	Pole mounted	33KVA/ST
11	Along the Road Ire-Ekiti			Siemens				Good	Pole mounted	33KVA/ST
12	Beside St John's Ang. Church Ire Ekiti.			Siemens				Good	Pole mounted	33KVA/ST
13	Onire Palace Ire Ekiti	1003000430	300	Else Wedy	Nigeria	2010		Nil		
14	Opp. Jagunjagun Ajakaye, Isan	99878	200	Kotson				Good	Fence with gate	33KVA/ST
15	Ilemoso Rural Electrification	1003000424	300	Else Wedy	Nigeria	2010	2012	Good	Fence with wire	33KVA/ST

16	Opp. Cac Oke Isegun Isan Ekiti	52736	300	ABB	Mjolby	2005		Good	Fence with no gate	33KVA/ST
17	Water Booster Station, Isan Ekiti	58523	200	ABB	Mjolby	2006	2007	Nil	No fence	33KVA/ST
18	Opp Oke Alafia Junction Ayede	1003000424	300	Else Wedy	Nigeria	2010	2011	Good	No fence	33KVA/ST
19	Along Ogere Industrial Estate Ayede	833193	300	Siemens	Germany	2009		Good	No fence	33KVA/ST
20	Opp. Ayede Gramm. Sch. Ayede	1003000434	300	Else wedy	Nigeria	2010	2010	Good	Fence with gate	33KVA/ST
21	Aafin Al'olu Ifafon	1003000426	300	Else Wedy	Nigeria	2010				
22	Beside Cac Oke Alafia Itaji	8330200	200	Minel Trafo	Yugoslavia	1988		Good	Fence with gate	33KVA/ST
23	Imojo Electrification Imojo Ekiti	359951	300	ABB		2006	2007	Good	Fence with gate	33KVA/ST