

Table of Contents

1. ABRIEF ON PLATEAU STATE

- i. Background
 - a. Location
 - b. Climate
 - c. Population
 - d. Occupation
 - e. Land management
 - f. Tourism
 - g. Tribes and people
 - h. Transportation and communication
 - i. Local government
 - j. Administrative history
- ii. Ten-Point Agenda

2. INVESTMENT OPPORTUNITY

- a. Economy
 - i. Agriculture
 - ii. Industries/commerce
 - iii. Mineral Reserves
 - iv. Tourism
 - v. Cooperatives
- b. Industrial Policy

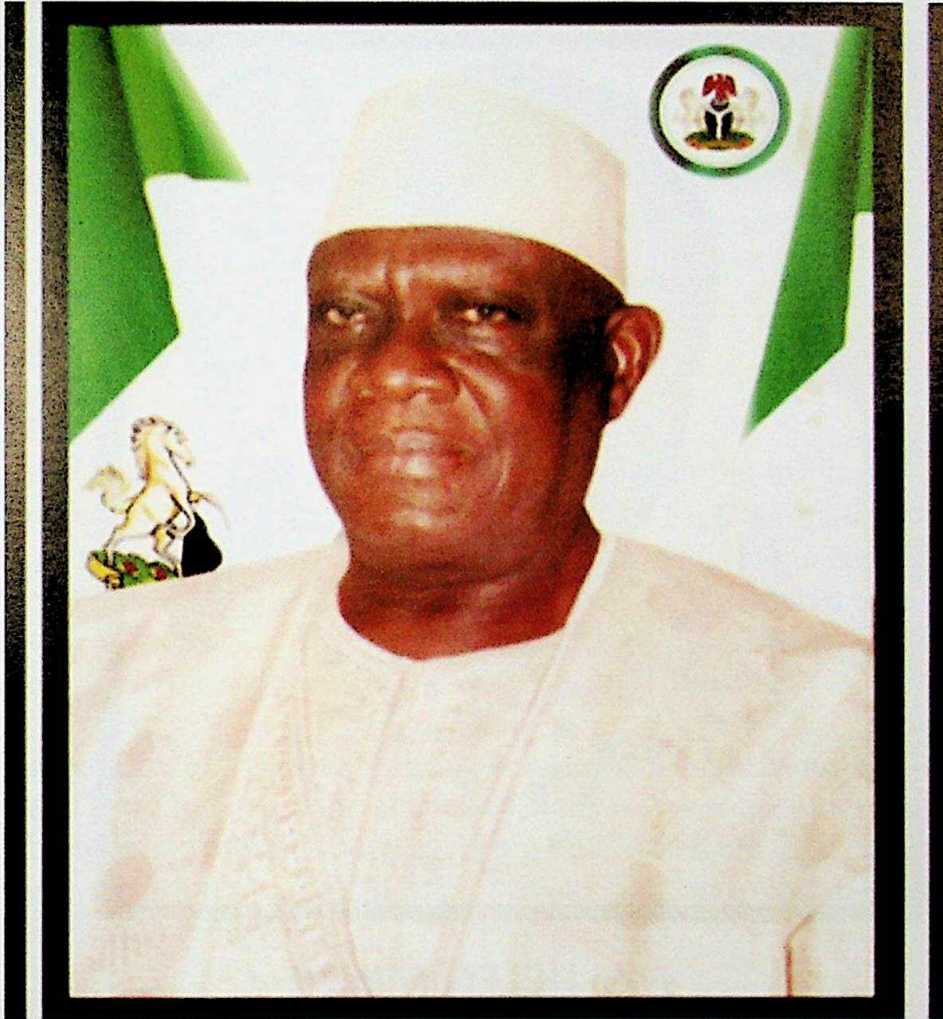
3. CONCLUSION

4. APPENDIX

- Tabular representation of the investment potential which captures or reflects on types, location etc of the areas covered.



DR JONAH DAVID JANG
GOVERNOR OF PLATEAU STATE



MR. IGNATIUS DATONG LONGJAN
DEPUTY GOVERNOR OF PLATEAU STATE



MS. HELEN MINER
HON. COMMISSIONER
Ministry of Commerce and Industry
Plateau State

PLATEAU STATE A BRIEF

1.0 BACKGROUND

Plateau State is a product of a political evolutionary process that has taken place over time. It is one of the thirty six states that make up the Federal Republic of Nigeria including the Federal Capital Territory, Abuja. The name **Plateau State** is a derivative of the ubiquitous and predominant geographical landscape in the Middle-Belt of Nigeria. The state is blessed with undulating highlands characterized by hills ranging from 500 to 1600 meters above sea level, as well as artificial hillocks and mining paddock/dumps found all over the State.

1.2 LOCATION

Plateau State is located in the Middle-Belt zone. It is within latitude 8° 22' North and 10° 24' North and longitude 8° East; and has a total land area of 26,899sq kilometers. The state is bordered on the North-West by Kaduna State, on the North-East by Bauchi State, on the South-West by Nasarawa State and on the South-East by Taraba State.

1.3 CLIMATE

The State has a near temperate weather, though in the tropics. Its climate has an average temperature ranging between 18.7° and 51.7° Fahrenheit. Annual rainfall varies from 13/1 75cm in the Southern part to 146cm on the Northern Plateau. The weather in the state is cold between the months of December and February due to harmattan winds; while it records its highest rainfall in July. The influx of expatriates into the state is attributed to the clement weather.

The topography of the state portrays it as a picturesque landscape with undulating highlands and a hydrographical head of many rivers some of which are fast flowing and formed into waterfalls such as Assop Falls and Kura Falls. Notably, Kura-Falls generates electricity for NESCO, a private firm and Nigeria's first Independent Public Offer company.

1.4 POPULATION:

Going by the 2006 census, 3,206,53 people live in Plateau State. This figure is made up of 1,598,998 males and 1,607,533 females.

1.5 OCCUPATION:

Agriculture is the predominant employer of labour. Major agricultural products are Irish Potatoes, Maize, Millet, Guinea Corn, Sweet Potatoes, Cocoyam, Beans, Acha, Yam, Groundnuts, Rice, Coffee and some exotic fruits and vegetables such as; apples, pears, strawberries, broccoli,

courgettes, pak choi and parsley (See Appendix 2). Another occupational activity is the mining of solid minerals. The State is endowed with mineral deposits such as Tin and Columbite, Clay, Gemstone, Kaolin, Tapaz, Bauxite, Tantalite, and Gypsum.

About 2% of the citizens of the state make up the civil service which drives the economy while commercial activities (Small and Medium Scale Businesses) are being encouraged. This is with a view to changing the perception of Plateau State as a "civil service State".

1.6 LAND MANAGEMENT:

Under the new industrial policy, government is favorably disposed to assisting investors willing to invest in the industrial sector in order to develop the state's economy and create jobs. Similarly, government ensures that land is provided for industrial, agricultural, and other commercial uses without delay and under favorable terms in both urban and rural areas.

The Ministry of Land, Survey and Town Planning in conjunction with the Department of Industry, Ministry of Commerce and Industry facilitates the release of Land and Certificate of Occupancy without delay.

In line with the industrial cluster concept of the Federal Government, the State has carved out parcels of land at the headquarters of each Local Government Council. This is for the establishment of cottage, medium and large scale industries by potential entrepreneurs. Infrastructural facilities such as electricity, road etc have been provided by government as incentives at the Naraguta Industrial Layout, Bauchi Road, in the capital city for use by investors.

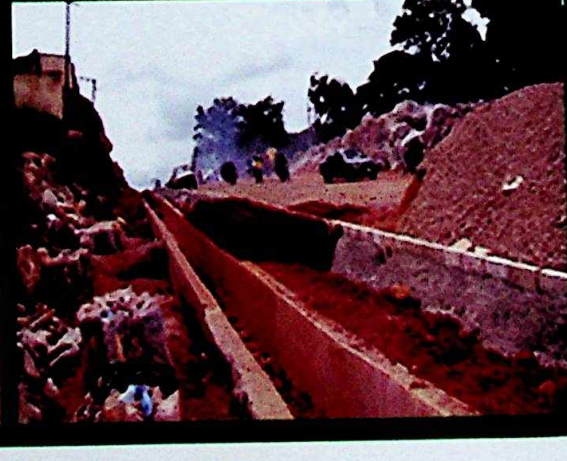
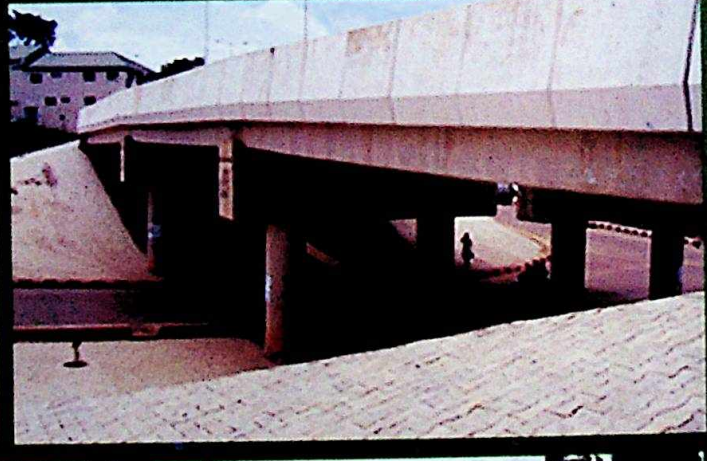
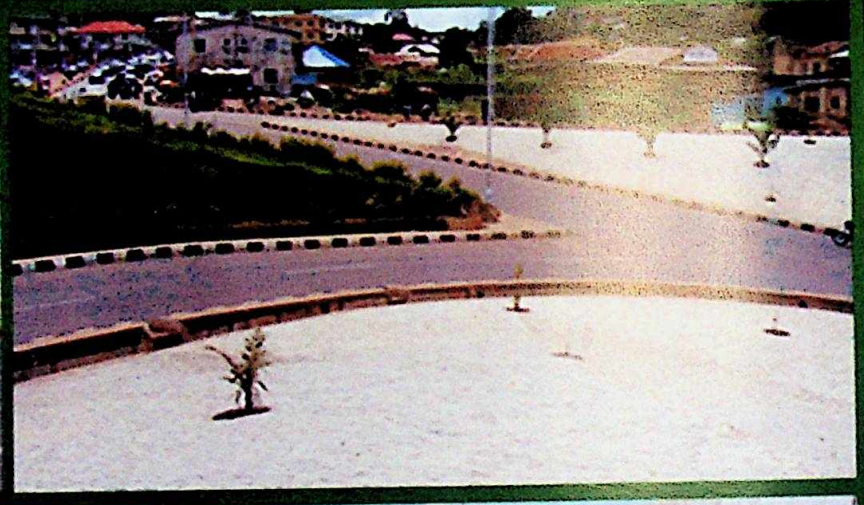
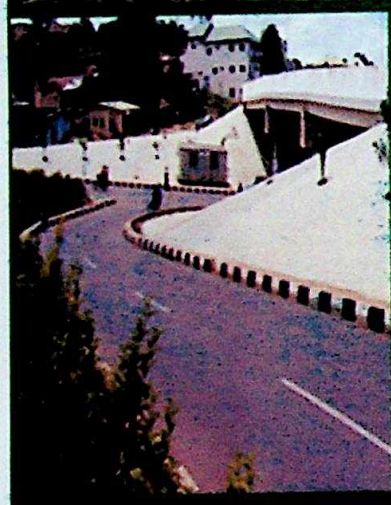
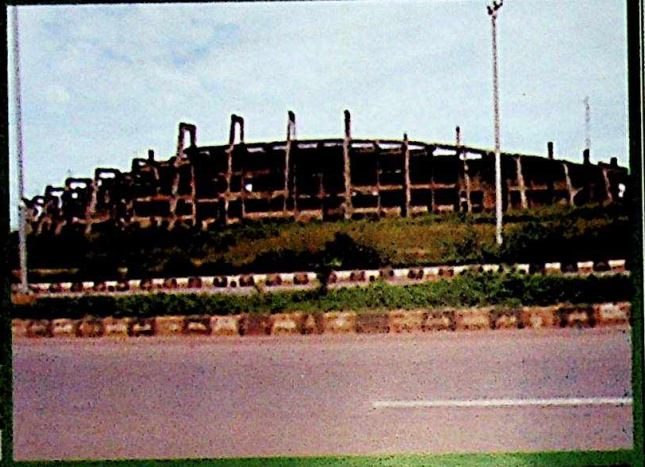


Plateau State Government
project
 Renovation Of J.D Gomwalk
 secretariate (main Complex)
 office of the head of service
 plateau state.
 Jos

Gada bin
 Over-head Bridge
 along
 Goodluck Ebele Jonathan
 Road.
 Jos



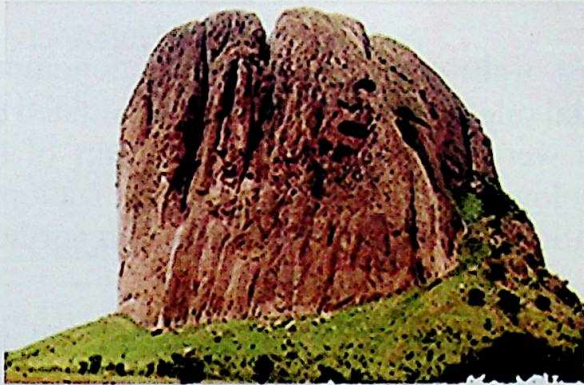
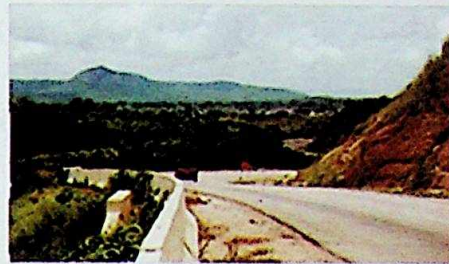
Plateau Hotel Junction
 Jos



1.7 TOURISM:

Plateau State is endowed with enormous tourism potential and multiple opportunities for the development of the tourism industry. The relative temperate, pleasant climate and natural scenic beauty of the state makes it an outstanding tourist destination nation-wide, hence accolade *Home of Peace and Tourism* as depicted by some samples below. There is the need for private sector participation in the industry for the maximum harnessing of the potential.

Current partnerships in the tourism sector where both government and the private sector collaborate include Kura-Falls, Youth Camp, Asso-Falls, Wase Rock, Shere Hills, Pandam Wild-life Park, National Museum of Traditional Nigerian Architecture (MOTNA), the Multimillion naira Roc International Hotel and others.



1.8 TRIBES AND PEOPLE:

Plateau State is aptly described as a miniature Nigeria where as many as about 53 ethnic nationalities (tribes) co-exist hospitably. Some of the indigenous tribes include the Berom, Ngas, Taroh, Gomai, Mwaghavul, Bogghom, Afizere, Ron-Kulere, Irigwe, Youm, Montol, Rukuba, Mushere, Anaguta Pan (consisting Mernyang, Kwagalak, Doemak, Bual, Njak and Jepjan groups), Pianpung, Buji, Gashish, Pyem, Amo, Mupun, Mship, Fier, Chawai, Agen etc.

There are other tribes that migrated to the state as a result of mining and trading. Such tribes include the Hausa, Yoruba, Igbo, Fulani, Ijaw, Kanuri, Bini, Urhobo Tiv, Idoma.

1.9 TRANSPORTATION AND COMMUNICATION:

Accessibility to the State is enhanced by its central location in Nigeria and can be accessed by air (Heipang Airport), net-work of roads and rail. The Heipang Dry Port under construction and the existence of communication facilities, Postal and Courier Services are added impetus to investors.

1.10 LOCAL GOVERNMENTS:

Plateau State is made up of seventeen (17) Local Government Councils as the third tier of administration. These are Barkin-Ladi, Bassa, Bokkos, Jos-North, Jos-East, Jos-South, Kanam, Kanke, Langtang-North, Langtang-South, Mangu, Mikang, Pankshin, Qua'anpan, Riyom, Shendam and Wase Local Government Areas.

2.0 ADMINISTRATIVE HISTORY:

Historically, in Plateau State, most of the communities were autonomous. However, the imposition of colonial rule of the 20th century necessitated the grouping of communities which were then administered as part of the Bauchi Province. As part of the colonial design, regional reorganization in the early years resulted in the creation of Plateau Province (within northern region) in 1927.

In 1967, the Federal Government under the leadership of General Yakubu Gowon, re-structured the four regions/provinces into 12 states. Thus, Bauchi-Plateau State emerged. Another state-creation exercise was undertaken by General Murtala Mohammed's regime on 3rd May, 1976. Benue and Plateau became autonomous states as a result of this development.

Twenty years later, precisely on 1st October, 1996, Plateau State was split in another State creation exercise. Thus, Nasarawa State was carved out by the regime of General Sani Abacha as Head of State of the Federal

Republic of Nigeria.

Since the creation of Plateau State the following leaders have governed the State in chronological order:

	NAME OF GOVERNOR	YEAR OF LEADERSHIP From/To
1	Police Commissioner, Joseph D. Gomwalk	1967-1975
2	Colonel Abdullahi Mohammed	1975-1976
3	Air Commodore Dan Suleiman	1976-1978
4	Colonel Joshua Umoru Anaja	1978-1979
5	Chief Solomon D. Lar	1979-1983
6	Navy Commodore Samuel B. Atukum	1984-1985
7	Colonel Mohammed Chris Ali	1985-1986
8	Colonel Lawrence Anebi Onoja	1986-1988
9	Lt. Colonel Aliyu Kama	1988-1990
10	Colonel Joshua Mamman Madaki	1990-1991
11	Sir Fidelis Na'anmiap Tapgun-January	January 1992 - November 1993
12	Colonel Mohammed Mana	1993-1996
13	Colonel Habibu Idris Shuaibu	1996-1998
14	Colonel Musa Sheik Shehu	1998-1999
15	Chief Joshua Chibi Dariye	1999 - 2007
16	Air Commodore Jonah David Jang	2007 – date

On 14th April, 2007, Jonah David Jang, (Former Governor of defunct Gongola and Benue States) was elected Civilian Governor of Plateau State with Mrs. Pauline Tallen, as deputy governor.

On 29th May 2011 Jonah David Jang was re-elected with Mr. Ignatius Datong Longjan as deputy governor to serve another 4 – year tenure.

- 3.0 Governance is undertaken by the three separate but interrelated and interdependent arms of government on the principle of separation of powers. These arms are the Executive, Legislative and Judiciary. The Jang team is made up of the Governor as the head, and Ignatius D. Longjan as his Deputy as well as Commissioners. On the team are the Secretary to the State Government, Chief of Staff - Government House, Head of Civil Service and Advisers. They have the responsibility of policy formulation and implementation, providing direction and ensuring the promotion of security and general well-being of citizens of the State.

3.1 **TEN-POINT AGENDA**

On assumption of office, the present administration set for itself a working document tagged "Ten Point Agenda", anchored on three pillars of i) Infrastructure, ii) Human Capital Development and iii) Resource mobilization. The thrust of this guiding document is to help government respond positively to the developmental challenges of building a new era of progress in the state. The new approach seeks to turn away from unsuccessful and outdated policies, values and practices and to lay a solid foundation for sustainable poverty reduction, job creation, wealth creation, value re-orientation and stable democratic structures. The Agenda includes the following themes:

- i. Sustainable Peace and Security;
- ii. Good Governance and Administrative Reforms;
- iii. Education and Human Resource Development;
- iv. Taxes and Finances;
- v. Agriculture, Water Resources and Rural Development;
- vi. Health;
- vii. Women, Youth, Sports and Social Development;
- viii. Tourism;
- ix. Urban Governance;
- x. Ethical reorientation.

INVESTMENT OPPORTUNITIES:

i. ECONOMY:

Plateau State is agriculture inclined with a variety of crops grown in large commercial quantities. (See Appendix I).

ii. INDUSTRY:

A number of industrial organisations (small, medium and large scale) exist in the State that offers multiple opportunities for investors in the areas of mining, tourism and agro-allied subsectors. Some of these include the Jos International Breweries, NASCO Group of Companies, Grand Cereals, Pioneer Milling Company, Jos Flour Mills, Kerang Spring Water (SWAN), Jos Food, PAMTRONICS, Naraguta Leather Works, stone quarrying, fish farms, a variety of drugs and vaccines for livestock at NVIR Vom, various hotels, sports and leisure organisations, capital markets, health and educational facilities.

iii. MINERAL RESOURCES:

The State is endowed with abundant mineral deposits for harnessing to enhance its foreign exchange earnings. Some of these minerals include: Tin, Zircon, Tantalite, Gemstones, Mica, Monazite, Columbite and Kaolin. (See Appendix II).

INTERVENTION IN THE AGRICULTURAL SECTOR USING THE THREE PIONEER AGRICULTURAL SERVICE TRAINING CENTERS

The State's Co-operative Department, in line with the current Cooperative Revitalization Programme (CRP) of the Federal Ministry of Agriculture and Water Resources; and the State Agricultural Transformation Programme of the government has established Model Agro Inputs Supply, Produce and Marketing, Micro Finance Institutional Services and Tractor Hiring Services to reposition Agricultural Cooperatives in the State.

The Plateau State Government has keyed in to this Federal initiative with a more elaborate plan for scientific and mechanized agricultural innovation to boost agricultural productivity of local commodities as well as exotic (temperate) crops like apples, cabbages/lettuce, rhubarbs, radish, exotic onion, Irish potatoes, strawberries, grapes, chilies, sweet pepper, peas, beetroots, carrots, cucumber, water melon, garlic, assorted tomatoes, as well as coffee Arabica, Jos privet, and assorted export rose flowers.

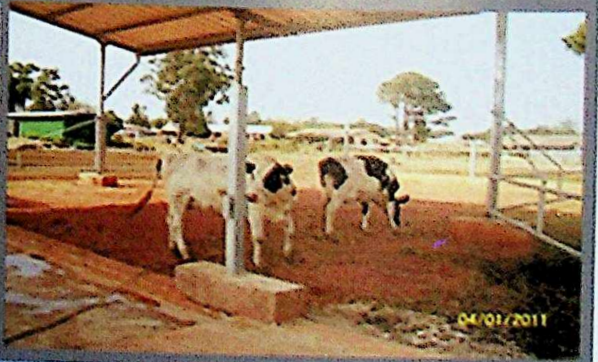
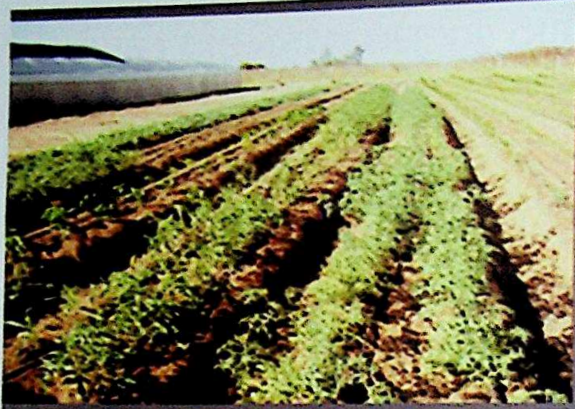
Other than mechanizing the agricultural sector, the training centers turn out extension workers, agronomists, horticulturists, viticulturists, veterinarians,

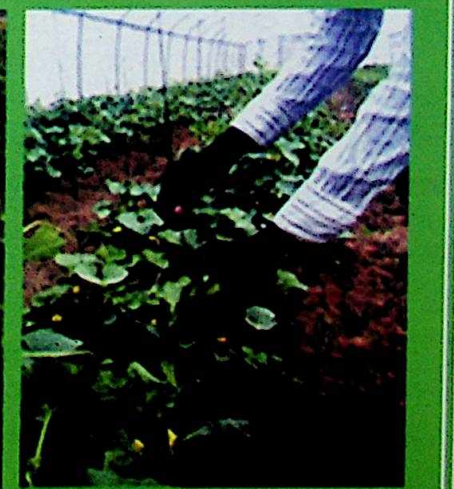
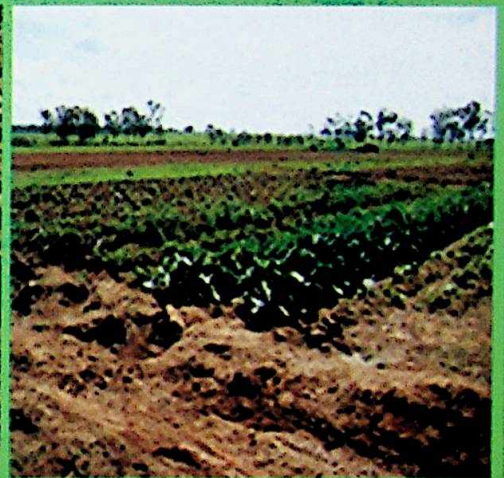
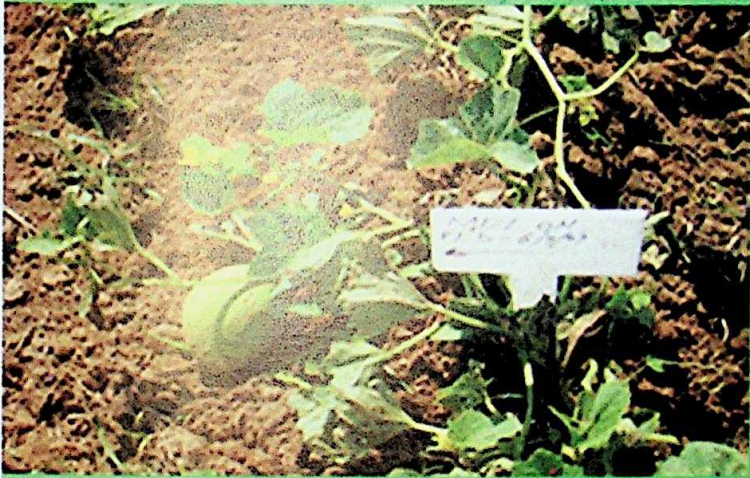
	NAME OF COOPERATIVE	SHARE CAPITAL Naira (₦)

THE ORGANISATION OF COOPERATIVE SOCIETIES

The State Department of Co-operatives has been able to form and register over 12,000 Co-operative Societies out of which about 60% are viable while about 40% were registered during the various Federal Government programmes such as FEAP, NAPEP, etc.

The efforts of the Plateau State Government in encouraging people in full time employment to participate in cooperative societies has been significant and has brought about wealth creation while developing a "savings" culture among the groups. Examples of the share capital of some of these cooperatives are:





3.2 INDUSTRIAL POLICY:

As frequent fluctuations affect the global economic climate, the Federal Government of Nigeria is increasingly developing policies aimed at encouraging private sector participation and entrepreneurship, while encouraging government divestment in mainstream economic activities. Accordingly, the following incentives are available to incoming investors:

- i. In addition to existing industrial layouts, more will be provided in each Local Government Area. These will be provided with access roads and streets, electricity and water supplies. This informs the massive road construction being undertaken by the Jang Administration across the state covering over 250 kilometers in rural and semi-urban and urban areas.
- ii. Where an investor runs into difficulty in terms of obtaining telecommunication services, the state government will come to his aid to have such services provided.
- iii. The Plateau State Government will not impose any taxes and levies, other than those approved by the Federal Government, on Companies.
- iv. The Plateau State Government will assist any investor by liaising with relevant federal agencies to clear any bottlenecks that may delay or prevent the establishment of a company in the state. It will also be prepared to work with other states in the federation to solve any problems that might discourage investors.
- v. In respect of mineral and agro-based industries, the state government offers a grant of up to 10% (maximum ceiling of ₦5 million) of the company's value, especially those established in industrially deprived or "depressed" areas.
- vi. Copies of pre-feasibility studies will be given free to genuine investors to reduce time spent on research and information gathering.
- vii. The efficiency of firefighting agencies has been improved by the State government in an effort to deliver social services to the growing industries in the State.
- viii. The state government will continue to patronize goods and services produced in the state so as to encourage their growth. Payment for such goods (and services) will be honored within two weeks of receipt of goods in the allocated store rooms.

- ix. In order to encourage private sector initiatives, government will continue to encourage the development of an entrepreneurial culture through active sponsorship of seminars and workshops aimed at sustaining an enterprise culture in the state.
- x. In addition to the provision of space within industrial layouts (in conjunction with local government councils), the State government will establish an Industrial Land Acquisition Fund to purchase and process industrial plots as well as the establishment of more industrial layouts for organisations at subsidized rates. Such processes will be completed within one month of the submission of applications.
- xi. Where pipe-borne water is absent, government will act swiftly to provide boreholes in conjunction with the investor. Where it is feasible to provide a dam that would also benefit the local populace, government will provide 75% while the investor provides 25% of the cost of the dam. If a water supply scheme already exists, government will provide pipe borne water to the industrial site as its contribution.
- xii. Apart from supplying power to industrial layouts within the state, government will work out modalities for channeling power to any industry located far from the grid without undue delay.
- xiii. Government will guard against multiple taxation on companies, and whenever complaints of such are received, they shall be acted upon within two weeks and refunds processed accordingly.
- xiv. All new industries and industrial innovations shall be exempt from ground and property rates for a period of five years.
- xv. All fees in respect of consent, registration and other related transactions pertaining to newly established industries will be waived for the first three years of establishment.
- xvi. Genuine investors are guaranteed Certificates of Occupancy within one month of application through the intervention of the Ministry of Commerce and Industry, provided all necessary Conditions governing the grant of such certificates are met.
- xviii. With respect to industrial initiatives, the State government intervenes in issues of land compensation and encourages community participation in projects.

CONCLUSION

The document reflects on the Investment Potential of the State in the essential areas of Industry, Commerce, Tourism and Cooperative Intervention in the Agricultural sector cum other sub-sectors of the State economy.

The State is no doubt endowed with huge investment potential that need to be harnessed in the above critical areas, so as to achieve optimum production output. The aim of this document is to provide a guide to investors in the course of the socio-economic transformation drive of Government through the Ten-Point Agenda.

Plateau state is endowed with rich deposits of various types of industrial mineral resources of high quality. Some of these have been exploited since the 19th century while exploratory work is still going on to establish the full extent of some precious stones. Consequently upon the extensive work done by the Mineral Department, the Ministry of Environment and Mineral Development, the following minerals have been discovered as indicated with their uses.

APPENDIX 1

NO	RAW MATERIAL (MINERALS)	LOCATION/INDUSTRIAL SITE	ESTIMATED RESERVES (TONNES)		POSSIBLE INDUSTRY/USES	
			PROVEN	INDICATED	IMMEDIATE	LONG TERM
1.	Barytes (Bas04)	Langtang South, Yelwa, Shendam, QuaanPan	800,000	350million	-canning industry - tin plating for printing	Manufacturing of alloys
2.	Cassiterite (Tin ore)	Bassa, Barkin Ladi, Jos North, Jos South, Jos East, Riyom, Bokkos	250,000 mt	750,000	- Tin plating - can production -printing technology	Alloying
3.	Columbite	Bassa, Barkin Ladi, Jos North, Jos South, Jos East, Riyom, Bokkos	-	500,000	Source of Tantalum Niobium-strategic metal	Aircraft industry (production of components), Nuclear reactors,
4.	Monazite	Bassa, Barkin Ladi, Jos North, Jos East,	-	Not quantified	-	Lamp filaments, television mantles
5.	Zircon	Jos South, Barkin Ladi, Mangu, Panshin	-	Not quantified	Refractory foundries	Alloys, Nuclear Reactors, Component
7.	Feldspars	Pankshin, Bassa, Barkin Ladi Riyom, Kanam	20,000	6.6million	Ceramic industry, electronic insulators	Glass industry, tiles, etc
8.	Kaolin	Riyom, Bassa, Barkin Ladi, Riyom, Kanam, Bokkos	7 million	200million	Kaolin powder, manufacture	Paper, soap, etc.
9.	Salt	Shendam, Mikang,	Large	Not	Salt processing	Chemicals

10.	Galena-sphalerite	Wase	Very large	-	Smelting company batteries	Manufacture of alloys
11.	Glass sand	Pankshin, Jos North, Jos South, Barkin Ladi, Mikang	1.3million	Large quantity	Ceramics refractory, glass industry	Foundry, synthetic marble, glass
12.	Garnet	Mangu, Bokkos, Kanke, Pankshin, Kanam	Large	-	Gemstones	Abrasive
13.	Magnetite	Jos North, Jos South, Jos East, Riyom, Barkin Ladi, Bassa, Mangu, Kanam	Large	-	Source of iron, paints	Floor tiles' building clay, etc.
14.	Clays	Bassa, Jos North, Jos South, Jos East, Mangu, Bokkos, Riyom, Barkin Ladi	9.1 million	Very Large	Paint pottery	Floor tiles' bricks, clay, building
15.	Wolframite	Bassa, Jos North, Jos South, Jos East, Mangu	Large	-	Source of tungsten for electrical	
16.	Ilemenite/rutile	Barkin Ladi, Bassa, Jos North, Jos South, Jos East, Mangu	Very large	Not quantified		Production of Titanium dioxide (TiO ₂) for ehite paint industry, titanium (Ti) metal for alloys,
17.	Mica	Pankshin, Riyom, Jos North, Jos East, Kanam	Large	Not quantified	Electrical insulation, filler in paints, rubber, dry	
18.	Gypsum	Wase. Kanam	Very Large	Not quantified	Plaster of Paris (POP) filler in paper and	Cement manufacture soil conditioning
19.	Talc	Panskin	Large	Not quantified	Extender in paints in cosmetics	Filler in rubber and asbestos in manufacturing
20.	Gemstones (Tourmaline, Topaz, Amethyst, Aquamarine, Sapphire,	Pankshin, Jos North, Jos South, Bokkos, Bassa, Riyom, Mangu, Kanam, Langtang North	Very large	Not quantified	Gemstone cutting, Gemstone polishing	Jewelry, Ornament
21.	Sand	All over the State	Very large	Not	Sandcrete	Construction
22.	Hard rocks	All over the State	Very large	Not quantified	Aggregates Dimension stones	Construction (Dam, road, etc.) materials
23.	Tantalite	Kanam	Very large	Not	Computer	Aircrafts,

APPENDIX 2

Plateau State lies in the central part of Nigeria. Although it is situated in the tropical zone, its climate is the closest equivalent of the temperate conditions of Southern Europe and the Americas. Various types of crops are cultivated annually and the crop distribution is related to soil types, topography and climate. Some of the crops include the following exotic and local varieties.

NO	PRODUCTS			
	Subject	Location	Uses	Industry
i.	Groundnuts	Shendam, Qua'an Pan, Wase, Langtang	Oil mills, feed mills	Feed mills and oil industry
	Soya beans	Most parts of the State	Production of vegetable oil, soya beans meal for animal feeds, production of milk as protein	Feed million and oil industry, Soya milk and cheese industry
	Cowpea	Langtang South, Langtang North, Kanke, Kanam,	Food products (Alele, Kosai, etc.) and animal feeds	Canned beans industry
ii.	Vegetables			
	Tomatoes	Mangu, Barkin Ladi, Bassa, Jos East, Jos South, Pankshin,	Tomato Puree Production (paste and juices)	Tomato puree & fruit juice industry
	Onions, Carrots, Strawberries, & Pepper	Plateau North and Central	Canned Vegetables	Vegetables, and spice processing industry
iii.	Cereal Crops			
	Maize	All over the State	Cornflakes, animal and poultry feed, flour production brewing of beer, starch malt,	i. Flour mill industry ii. Beer and malt industry
	Millet	All over the State	Animal and poultry feed, flour production, starch,	Flour mill industry
	Sorghum (Guinea corn)	All over the State	Livestock feeds, malt productions, alcohol, floor titles and particle	i. Flour mill industry ii. Beer and malt industry
	Rice	Mangu, Shendam, Qur'an Pan, Langtang North, Langtang South	Per-boiled rice, rice flour production, malting, livestock feeds, long fibre pulp paper	i. Rice mill industry (polished rice) ii. Particle board/papa industry
	Acha	Barkin Ladi, Jos North, Riyom, Jos	Flour, particle board	Flour mill industry
	Wheat	Barkin Ladi, Bassa, Mangu, Pankshin,	Flour, Malt, Alcohol, Baby food, etc.	Flour mill industry
	Barley	Barkin Ladi, Bassa, Jos South	Flour, Malt, Alcohol, Baby food, etc.	Flour mill industry
	Tamba	Some parts of central Plateau	Flour, particle board and floor titles from	Flour mill industry

iv.	Tubers			
	Yam	Shendam, Qua'an pan, Langtang South	Flour, food production (fried, boiled or flaked)	Instant pounded yam flour industry
	Cassava	Shendam, Qua'an Pan, Langtang South,	Industrial Starch, Flour, Garri, Animal feed	Flour, garri starch and cassava chip industry
	Potatoes (Irish)	Mangu, Bokkos, Jos North, Jos South	Potato chips/flakes	Potato chips and related product industries
	Potatoes (Sweet)	All over the State	Potato chip/flakes, sweetener, glue	Potato chips and related product industries
v.	Beverages			
	Coffee and Tea	Jos South, Barkin	Coffee and tea	Coffee processing
	Ginger	Langtang North, Langtang South,	Soft drinks, confectionaries, and	Ginger processing
vi	Oil seeds	Sesame, Marriga,	Neem	
Vii	Fruits			
	Oranges	North and Central Senatorial Districts		
	Mangoes	All over the State		
	Paw-paw / papaya	All over the State		
	Guava	All over the State		
	Citrus	All over Northern Senatorial Districts		
	Cashew	All over the State		
	Apples Strawberries Pashion fruit Beet Root	Northern and Central Senatorial Districts		
Viii	Vegetables			
	<ul style="list-style-type: none"> - Cabbage - Assorted Onions - Carrots - Spinach - Lettuce - Radish - Water melon - Rhubarb - Broccoli - Courgettes - Parsley 	They are mostly found in the Northern of Central Senatorial Districts of the State		

APPENDIX 3

LIST OF MAJOR COMPANIES AND INDUSTRIES IN PLATEAU STATE

No	NAME INDUSTRY	LOCATION	(T Y P E S) I T E M S	REMARKS
1	NASCO CARPETS (L)	Anglo- Jos, Jos south	Carpets	Functional
2	NASCO house hold products, LTD	" " "	Beauty bar/ toilet soaps,	"
3	NASCO Confectionaries LTD (L)	" " "	Sweets, Biscuits, etc	
4	NASCO packs Ltd (L)	" " "	Packing Materials	
5	NASCO Rice mills (M)	" " "	Rice milling and polishing	Not functional
6	Nigerian Bottling Co. PLC (L)	" " "	Soft drinks, e.g Fanta,	Functional
7	Jos international Breweries (L)	Ray-field Road Jos, Jos-South LGC	Beer/ Malt drinks	Functional
8	Vita- Foam Nig PLC (M)	" " "	Domestic foams	"
9	Zuma Steel (W.A.) industries	" " "	Steel Rods, plates, etc	Dormant
10	Pamtronics Nig. Ltd (S)	" " "	Solar generators	"
11	Shinco industries Ltd (M)	" " "	Heavy equipment manufactures, e.g.	"
12	Zabtex industries Ltd (M)	" " "	Textiles (stock manufacturing)	"
13	Kavitex Nig Ltd (M)	Gada biyu, Heipang Road, Jos South LGA	Kaolin processing	Dormant
14	Associated best Foods Nig. Ltd	Ray- field, Jos South LGA	Food and fruit juice	Functional
15	Grand Cereals and oil Mills LTD (M)	Bukuru, Jos South LGA	Flour, Grits, Vegetable	"
16	Standard Biscuits Nig. Ltd (L)	Ray- field, Jos south	Biscuits	"
17	Highland steel Nig. Ltd (M)	Ray- field road,	Steel rods, nails, etc	"
18	ECWA Rural Dev. Co. Ltd	Bukuru, Jos south LGA	Poultry feeds and equipment	"
19	Tim industries Ltd (M)	Dogon Karfe, Jos south	Office equipment	Dormant
20	Tim- Tali Mills (M)	Langtang, Langtang North LGA	Rice milling and polishing	Functional
21	LIMCA Bottling Co. Ltd (L)	Zarazon, Jos North LGA	Soft Drinks	Wound- up
22	WAMCO Nig Ltd.(L)	Vom, J/South LGA	Dairy products	Functional
23	Naraguta Leather Works Ltd. (L)	Naraguta J/North LGA	Leather shoes, bags, caps	Functional
24	Plateau Fertilizer and Chemical co. Ltd (M)	Bokkos, Boskos LGA	Assorted Fertilizer	Dormant
25	Jos Flour Mills Ltd. (M)	Abattoir J/ South	Grits and Flour	Dormant
26	Zitta Foams Ltd (M)	Sabon- Barki,	Foams	Dormant
27.	Bamford Industries Ltd. (M)	Ray-Field J/South LGA	Heavy earth Moving equipment & Agric	Dormant
28	Air Liquid Nig. Ltd. (L)	Industrial Layout, Jos South LGA	Cooking Gas	Dormant
29	H.Z. Doeboet Mills Ltd (M)	Namu, Qua'an Pan LGA	Maize flour	"
30	Wedotebery Nig.Ltd. (M)	B/Ladi LGA	Chalk manufacturing	"
31	Zurak Mines Nig. (M)	Zurak, Wase LGA	Mining of Byrites	"
32	Yelwa rice Mills Ltd.	Yelwa, Shendam	Rice processing	"
33	Lantang Mills (S)	Lantang, Lantang North LGA	Rice processing	Functioning

34	Geotess Nig. (M)	T/Wada Ring Road, Jos	Mining	Functioning
35	Gurum Roofing Tiles (M)	Gurum, Bassa LGA	Roofing tiles	Dormant
36	Inland container depot (L)	Hiepang, B/Ladi LGA	Cargo handling	Soon to take off
37	Lantana Nig. Ltd	Lamingo road, Jos north LGA	Meat processing	Wound up
38	Gyartagyre Nig. Ltd (S)	Dadin Kowa, Jos south LGA	Stone Crushing	Functional
39	Gold & Base Mines Nig. Ltd (S)	Dilimi, J/South LGA	Mining	Functional
40	Janfa Industries Ltd (S)	Industrial Area, Jos South LGA	Office Equipment	Dormant
41	Makeri Smelting Co. Ltd (L)	Bukuru Road, J/South LGA	Tin Smelting	Dormant
42	Minefields Engineering Nig. Ltd	Bukuru, Jos South LGA	Metal Fabrication & Mining	Functional
43	Agro Complex Nig. Ltd, (S)	D/Dutse, Jos North LGA	Food Processing	Dormant
44	Spring Waters Nig. Ltd (L)	Kerang, Mangu LGA	Spring Water and Fruit Juice	Functional
45	Kaduna Prospectors Nig. Ltd. (M)	Rim-Riyom LGA	Mining	Dormant
46	Nigeria Electricity Supply Co. (NESCO) (M)	Krru Falls, B/Ladi LGA	Electricity Generation	Functional
47	Consolidated Tin Mines Ltd.(M)	Bukuru-Jos South LGA	Mining	Dormant
48	Pioneer Milling co. Ltd. (L)	Zallaki- Bassa LGA	Flour Milling	Functional
49	Industrial Dev. Centre (L)	Mista-ali-Bassa LGA	Skills Training	Functional
50	Exlands Nig. Ltd. (M)	Gindin Akwati, B/Ladi LGA	Mining	Dormant
51	NASCO Fibre Products Ltd. (L)	Anglo-Jos, Jos South LGC	Production of Jure bags etc.	Dormant
52	Bass & Matt Enterprises (Nig) Ltd	Dogon Karfe,	Mining	Dormant
53	JODAJ Enterprises Ltd.	Rev. Akila Machunga's Street, Jos	Mining & Allied Products	Functional

HONOURABLE COMMISSIONERS OF PLATEAU STATE		
1	Barrister. Edward Pwajok	Attorney Gen/comm. of Justice
2	Mr. Bako Lahofa Famak	Commissioner, Ministry of Youth Development
3	Mr. Athanasius N.E. Dashen	Commissioner, Ministry of Education
4	Mr. Christopher A. Hassan	Commissioner, Ministry of Works, and Transport.
5	Mall. Idi Ibrahim Waziri	Commissioner, Ministry of Water Resources and Rural Development
6	Mrs. Sarah Simi Yusuf	Commissioner, Ministry of Environment
7	Mr. Davou C. Mang	Commissioner, Ministry of Finance and Economic Planning
8	Ms. Helen Miner	Commissioner, Ministry of Commerce and Industry
9	Dr. Paul Samani Wai	Commissioner, Ministry of Local Government and Chieftaincy Affairs
10	Mall. Ghamzaki A. Abdullamid	Commissioner, Ministry of Special Duties
11	Mr. James Yakubu	Commissioner, Ministry of Sports
12	Dr. Fom Dakwak	Commissioner, Ministry of Health
13	Mr. Dongsar L.S Dongtoe	Commissioner, Ministry of Tourism, Culture and Hospitality
14	Engr. Solomon Bulus Maren	Commissioner, Ministry of Housing and Urban Development
15	Barrister (Mrs.) Olivia Dazem	Commissioner, Ministry of Women Affairs and Social Development
16	Mr. Abraham Yiljap	Commissioner, Ministry of Information and communication
17	Mr. Yilji Matthew Joseph Gomwalk	Commissioner, Ministry of Lands, Survey and Town Planning
18	Mr. Nanven Steven Barko	Commissioner, Ministry of Agriculture and Natural Resources
19	Mr. Agwom Sani-Zandi Adubok	Commissioner, Ministry of Minerals Development
20	Mrs. Comfort N. Piwuna	Commissioner, Ministry of Science and Technology