



PARTNERSHIP FOR RESULTS PORTFOLIO BRIEF 3

1. Portfolio (Active)
2. Progress (On Challenges & Results)
3. Strengthening Collaboration (Pipeline)

May 24, 2017

Engagement To Date with Executive Governors

A Partnership for Results and Improved
Implementation Capacity for IDA 18 Resources

Two WB Briefing to NGF

Individual Meetings between WB and Executive Governors (WB Office or in State)

Bank Project teams
– 60 Implementation support missions this year

Bank Management Visits to States







Portfolio Status as at April 2017

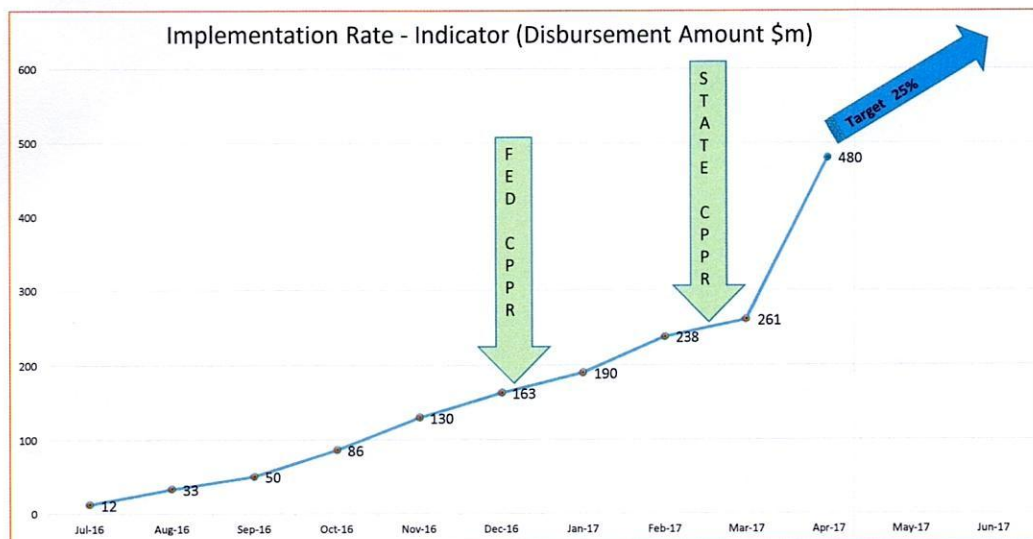
	Commitment (\$m)	Undisbursed Balance(\$m)
Federal level projects	4,084	2,335
State level projects	2,981	1,700
Total	7,065	4,035

NB: DPOs excluded

State Performance before CPPR (*Details provided*)

Color Code	Range of Undisbursed Balance	Undisbursed Balance	States
	Above \$100m	1,060	Enugu, Adamawa, Kano, Rivers, Imo, Bauchi, Borno, Oyo
	Between \$50m and \$100m	625	Lagos, Niger, Cross River, Ekiti, Anambra, Kogi, Osun, Yobe, Taraba
	Between \$10m and \$50m	442	Ondo, Edo, Kaduna, Ebonyi, Delta, Nassarawa, Bayelsa, Gombe, Jigawa, Plateau, Abia, Katsina, Kwara
	Below \$10m	45	Benue, Kebbi, Sokoto, Akwa Ibom, Zamfara, Ogun, FCT
	TOTAL	2,172	
	States with projected disbursement before June 2017 higher than \$20m	202	Enugu, Adamawa, Kano, Rivers, Lagos, Ondo

POST CPPR FOLLOW UP & RESULTS



FY17 CPPR Outcome – 36 States

Key Issues:

- Lack of Ownership
- Lack of awareness on state portfolio details
- Inadequate Portfolio Coordination Mechanism
- Misconception on Counterpart Funding and Govt. Contribution
- Beneficiary Contributions

Agreements Reached:

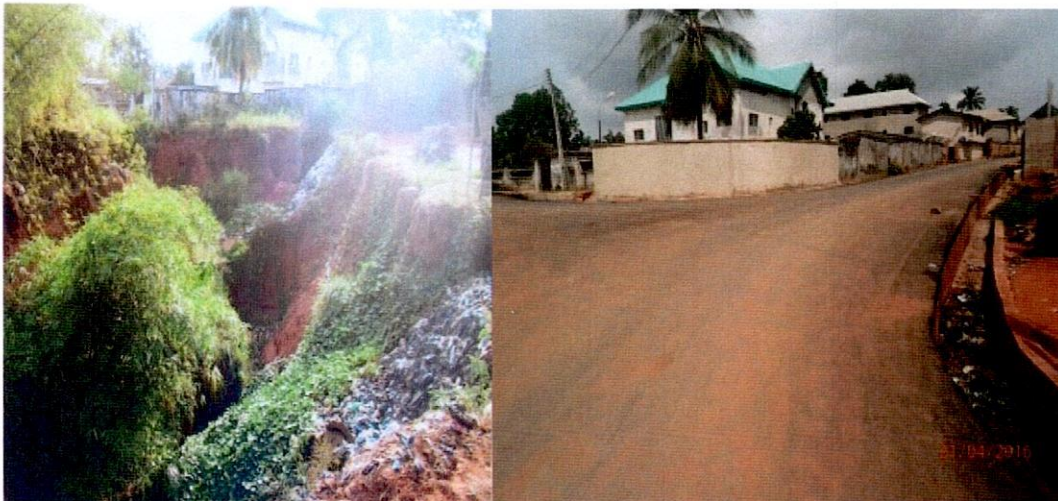
- Agreed on Bank Support in Strengthening Coordination mechanism
- Consensus on replicating portfolio review model on regional basis
- Platforms for exchange of innovative solutions to implementation challenges
- Implementation to remain compliant with Bank Fiduciary Policies

RESULTS ABOUND WITH CONFIRMED DEMAND
AND
POTENTIAL FOR GREATER RESULTS

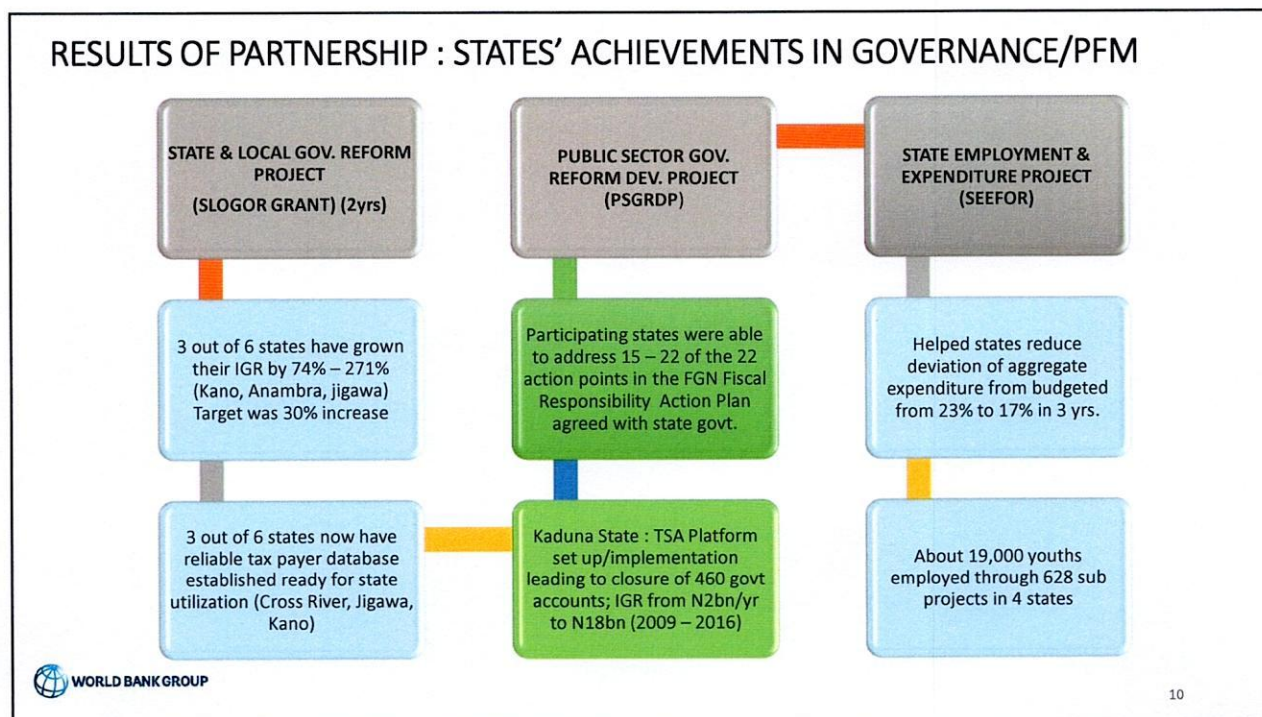
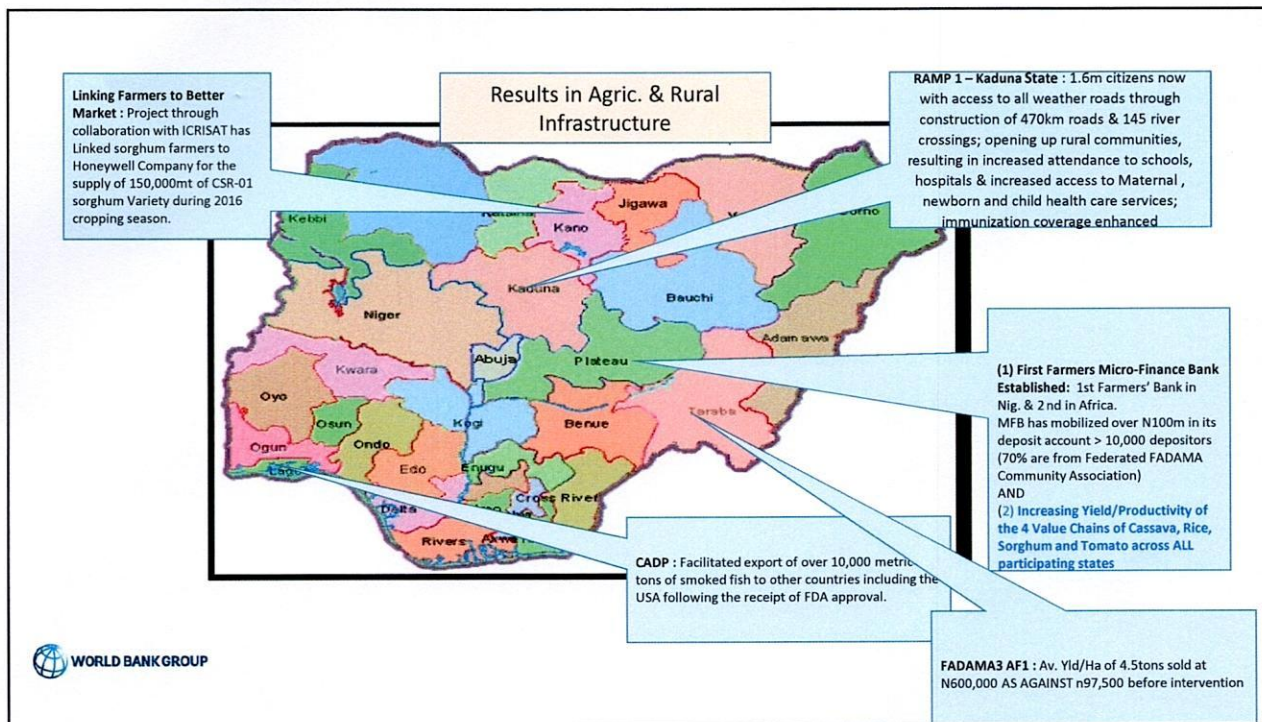


7

RESULTS OF STRONG PARTNERSHIP ; Environment – A new approach
Targeted gully complexes and other erosion sites treated with at least 75% of planned measures for targeted sub-watersheds BELOW : Amachala - Anambra state, before and After NEWMAP's intervention



8



Innovative engagements with RESULTS in Human Development



Result Based lending in Health - Adamawa : Significant drop in maternal & child mortality as Full immunization increased from 37% to 73% and ANC increased from 18% - 39% within 1 yr.



Niger State : Reduction of HIV Prevalence rate from 4% to 1.2% (NARHS 2013) & 1.7% (Sero prevalence study 2014) – state now has lowest rate in north central & 10th in Nigeria.



Result Based lending in Education – Bauchi: 3,431 teachers deployed from urban to rural schools ; 2076 teachers deployed in core subjects with improved learning outcomes – WAEC credit rate improved from 2.26% (2007) to 17.6% (2016)



Social Protection interventions – Edo : Education – 28 communities with 109,620 beneficiaries led to 32.8% increase in school enrolment with average time taken to school reduced by 78% because increased facilities led to reduction in av. Distance covered from 4km to .75km. Electrification – 42 communities now connected to the national grid with 196,000 beneficiaries representing 16,000 households.

Strengthening our Collaboration

Areas for Governors' Support

- FY18 – FY19 Pipeline & Borrowing Plan Approval
- Counterpart Fund Requirement
- Bank Operational and Fiduciary Policies

Areas for Bank Support

- Support on strengthening the coordination mechanism at state level
- Providing information Bank Policies related to implementation for improved understanding and compliance
- Ensure Governors are consulted in the SCD Process

FY18-19 – AREAS OF SUPPORT

- Electricity Transmission
- Loss reduction in distribution, including metering
- Power Sector Guarantee Project
- RAMP III
- Rural electrification
- National Women Empowerment Project
- Performance based support to power sector reforms
- Livestocks
- Transport Connectivity
- Subnational fiscal performance base operation
- Accelerating nutrition results in Nigeria
- Economic Reforms and Governance Project
- Affordable Housing Finance

Nigeria Portfolio: Counterpart Fund Profile/Requirement

- Total CF Amount outstanding for portfolio (19 states): > \$67m (about =N= 20bn)
- 3 states without CF Backlog : Bauchi, Edo, Taraba, Jigawa and Oyo

Rating	Defaulting projects	Projects	States with Backlog	Challenge
Unsatisfactory	7%	FRDP (Fed) & RAMP2 (States)	Adamawa, Enugu, Niger, Osun	No clear information from PIU to Governors
Moderately Satisfactory	22%	CSDP, FADAMA3, CADP, NEWMAP, YESSO	C/River, Ebonyi, Ondo, Benue, FCT, Ekiti, Gombe, Yobe, Osun, Niger, Kano, Kogi, Imo, Adamawa, Enugu, Kwara, Plateau, Ondo, Kaduna, Katsina, Jigawa, Sokoto, Kebbi, Lagos	No clear information from PIU to Governors
Satisfactory	26%	Urban Water 3, LUTP2, Ibadan Flood, Nat. Social Safety Net, TRIMIN	Ekiti + OTHERS NB : Other states' data awaited.	NA
Not Required	45%	NSHIP, PSGRDP, SEEFOR, NEGIP, SOML, SEPIP, HFDP, PPP, GEM, DFI, POLIO; L'EKO	Not Applicable	NA

WB ASKs

- Need to Convene Portfolio reviews at the state level to understand project development objectives
- Need to understand conditions for use of WB Funding & Resolve problems affecting implementation and hence, disbursement – (Follow through CPPR Commitments)
- Borrowing Plan
- Counterpart Funds – (*details provided*)

ANNEX

PORTFOLIO STRENGTHS

- ✓ Large , Evolving and Catalytic
- ✓ Strong Alignment with the Country Development goals (Agric., Health, Power, Social Protection, Transport /ICT etc)
- ✓ Flexible – Anchored on a well designed CPS , diverse Instruments facilitates timely response to government requests (DPOs, RBFs, IL)
- ✓ Results Focus – Results Based Financing, Analytical pieces on Political Economy
- ✓ Increasing Alignment of sectoral state & federal interventions – Health, Agriculture, Water and Social Protection
- ✓ Synergy between sectors with integrated components eg Agriculture & Rural Infrastructure
- ✓ Very decentralized Project Mgt. – 17 out of 23 TTLs (74%) are on ground.
- ✓ Strong collaboration with IFC in the Power & Agriculture sectors (Joint Business Plans)

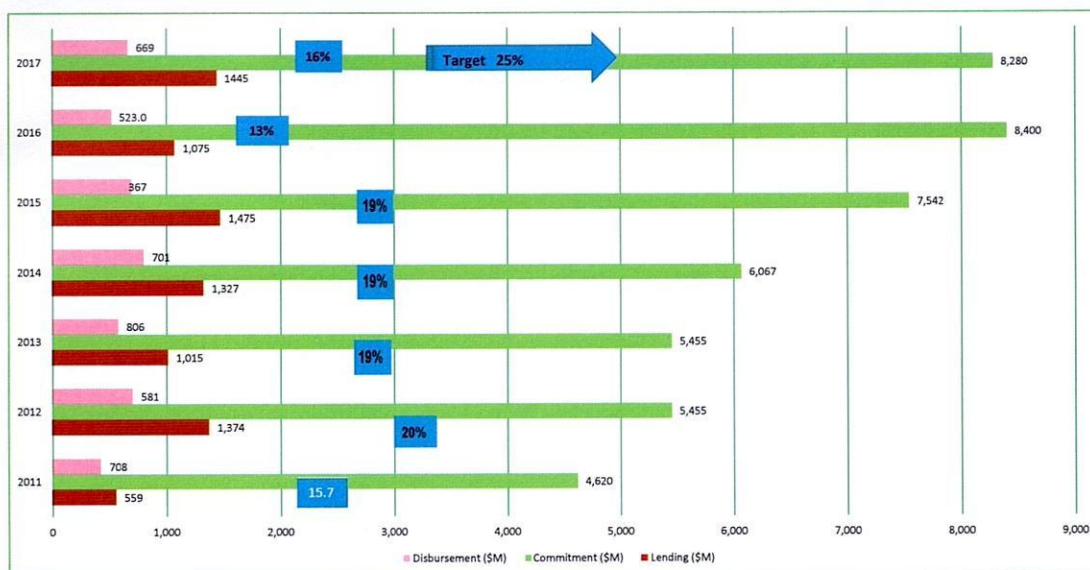
19

Portfolio Overview as at April 2017

	National projects (IDA)	IBRD	GEF + RE+GPE	Regional projects (IDA)	Total
Active Projects #	28	1	4	3	36
Amount (\$million)	7,201	500	184	250	8271
Overage Projects #	3	0	0	1	4
Undisbursed Balance (\$ million)	4,119	496	130	56	4801
Undisbursed (%)	57	99	71	22	58
Disbursement in FY17 (\$ million)	480	0.6	15	8	403
FY17 disbursement ratio (%)	11.9	0.1	12	9	

20

Nigeria Portfolio : Slow implementation - Trend in Program Size & Disbursement Rate (\$m)



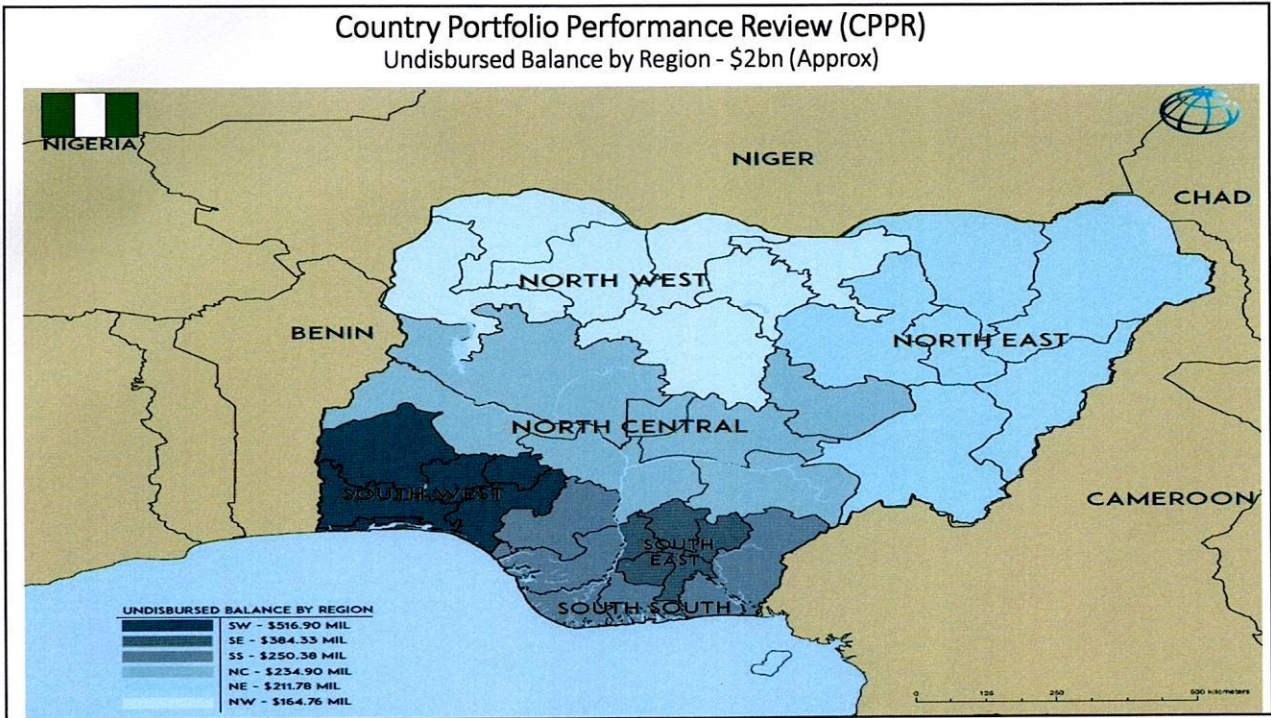
Systematic Country Diagnostic (SCD) & Country Partnership Framework(CPF)

- The **SCD** is conducted by WBG staff, in close consultation with national authorities/other stakeholders, to identify the most critical constraints & opportunities facing the country on its course to end extreme poverty & promote shared prosperity in a sustainable manner.
- The **CPF** identifies the key objectives & development results through which the WBG intends to support a member country in its efforts to end extreme poverty & boost shared prosperity in a sustainable manner.

The CPF then outlines a selective and flexible program that will help the country achieve the CPF objectives.

The WBG & the country draw on the SCD to develop the CPF objectives together; deriving them from those country development goals that reflect the WBG's comparative advantage as well as alignment with the twin goals, taking into account opportunities for leveraging the private sector to provide sustainable solutions to development

When preparing a CPF, the WBG starts from the member country's own vision of its development goals, which should be laid out in a poverty focused national development strategy.



Progress with Gully Rehabilitation

NEWMAP in Cross River State



(a) Degraded Land at Ikot Anwatim



(b) Restored Land at Ikot Anwatim



(a) Degraded Land at Atakpa



(b) Restored Land at Atakpa

Need to sustain strong Partnership...Work Remains



Across the South and the North

